

NEV KANE
 Real Estate since 1953
 nevkane.com.au
 07 5446 7333

Mayor's message to Feds:

Rail funding a good start

SUNSHINE Coast Council Mayor Rosanna Natoli called on the Australian Government to use last night's (Tuesday May 14) Federal Budget to address cost of living pressures, housing affordability and the short-fall in infrastructure investment in one of the nation's fastest growing regions.



Mayor Natoli, pictured, said these were consistent themes raised with her during the recent Council election campaign.

"I am pleased to see we are off to a positive start with yesterday's (May 13) announcement that the Australian Government is increasing its commitment to the Direct Sunshine Coast

rail project from \$1.6 billion to \$2.75 billion to match the recent commitment by the Queensland Government," Mayor Natoli said.

"I welcome this matched commitment by the Australian government as one of the most critical infrastructure investments that we want to see delivered for our region. An effective, reliable and sustainable public transport network is critical to the liveability of the Sunshine Coast and supporting the productivity of our economy.

Aging population, increasing numbers

"Our Council looks forward to working with the Australian and State governments on how this investment can be stretched to deliver this project beyond Caloundra - with our ultimate goal of securing funding to deliver the rail connection to Maroochydore.

"With an aging population and increasing numbers of young families, cost of living pressures are particularly pronounced for the many members of our community who are on fixed

• CONTINUED PAGE 6



Nambour Salvation Army Captain David Donaldson in the Nambour Salvos' Hall where the band, pictured right, will perform.

World-class band coming to Nambour

by Tanya Outridge

GET ready to be swept away by the sounds of the esteemed Melbourne Staff Band as they make their way to Nambour for the 60th anniversary celebrations of The Salvation Army's Red Shield Appeal.

The iconic brass band will grace the stages of the Nambour Salvation Army Hall and Suncoast Christian College Church, and also perform at the Nambour Rummagers Market on Sunday May 19 in the Council Forecourt, Currie Street.

Nambour Salvation Army Captain David Donaldson was excited about the band's visit.

He said it was an opportunity to raise vital funds for local social programs while enjoying world-class musical performances.

"Having a brass band of this calibre performing for us over the weekend is extremely exciting," Captain Donaldson said.

"This band tours nationally, and also internationally, and they have performed with James Morrison."

Established in Melbourne in 1890, the band was made up of a small group of officers and employees brought together under the leadership of Staff Officer Jeremiah Eunson to assist in meetings conducted by Army leaders and to campaign in the area.

"From very humble beginnings, the Melbourne Staff Band has evolved to become one of the most accomplished and respected brass bands in the country," said Captain Donaldson.

The Melbourne Staff band will be playing

on Saturday the 18th of May at the Suncoast Christian College Church.

"The afternoon of music will begin between 3pm and 5pm on Saturday 18th May, when there will be a concert; 'Bands in the Round', from four bands at Suncoast Christian College, and it will be followed by The Melbourne Staff Band performance between 6pm and 7.30pm.

"On Sunday the 19th of May, the Nambour Salvation Army 9.30am Morning Worship will be led by The Staff Band and at 1pm that afternoon there will be a 'Sunday of Praise' Meeting."

As an added bonus, the band will be performing for free to the public at the monthly

• CONTINUED PAGE 2

WOOMBYE VETERINARY SURGERY
VET
 5442 2000
 Dr Charlotte Ashton-Heinius B.V.Sc.
 23 Blackall Street Woombye

SUNSHINE STEERING
 Straight up front.
 RTA No. AU49451
David & Tina Ledger P 5478 8020 F 5478 8850
 Power Steering • Suspension • Wheel Alignments
 Child Restraints • Roadworthy Inspections
 Tyre & Balancing • All Mechanical Service & Repairs
 Air Conditioning • All Brake Repairs
 We also sell nuts, bolts and tyres.
 4/27 Main St, Palmwoods, Qld 4555

Sunstate Gearbox & Diff Service
 Specialising in:
 • Manuals • Differentials
 • Automatics • Tailshafts
 • Transferscases • Clutches
OBLIGATION FREE APPRAISAL
 5 Charles Court, Kunda Park
Ph: (07) 5476 8911
 www.sunstategearbox.com.au

Collectorama
 Giant Vintage and Antiques Fair
SATURDAY
June 1st, 2024
7am - 2pm
NAMBOUR SHOWGROUNDS
 Coronation Avenue
\$8^{ea} CASH
 KIDS & PARKING FREE



RE/MAX
 Property Sales

2 Prominent Locations
1 Large Experienced Team
Huge Coast-wide Reach!



Woombye artist wins People's Choice

WOOMBYE artist Brianna Campbell has clinched the 2024 Seeing the Soul Art Prize People's Choice Award with her charcoal drawing capturing a child asleep with her faithful puppy, *above*. The heartfelt artwork resonated with visitors to the *Seeing the Soul: Hoofbeats Sanctuary Art Prize and Exhibition* at Cooroy Butter Factory Art Centre. Campbell's evocative piece earned her a \$500 prize.

CEO Barb Blashki praised Campbell's talent, noting her burgeoning interest in art from an early age. Campbell's artistic flair was also evident in her contributions to the exhibition, including pieces titled "Synergy" and "Whispers," available for sale on the Hoofbeats website.

The exhibition, supported by sponsors like Bendigo Community Bank, showcased an array of works to support Hoofbeats Sanctuary's mental health programs. The sanctuary at Doonan, provides a therapeutic haven where people, animals and nature nurture emotional well-being for those grappling with mental health challenges stemming from trauma.



Silver Tongue Food Founders Andy Tolson & Kristina Kukan.

Gourmet Success:

Chevallum firm dominates Tassie Fine Food Awards

WHEN the judging ended at the 2024 Royal Tasmanian Fine Food Awards, Chevallum-based company Silver Tongue Foods took home two champion titles as well as three gold, three silver and three bronze medals.

Winning the first gold medal and securing the title of Champion Baked Product (Savoury) was the sourdough cracker that started Kristina Kukan and Andy Tolson's journey four years ago.

Aptly named 'Fleur' the cracker is hand-baked in small batches and is adorned with fresh edible flowers that are pressed into the dough before baking, resulting in a unique, individual cracker. The flower selection rotates depending on seasonality, making it a product that is completely unique to Silver Tongue Foods.

The second Champion title was awarded to their 'Spiced Orange' preserve which was awarded Champion Preserve (Sweet) after successfully being awarded gold in its category. Spiced Orange is a popular product for Silver

Tongue Foods and is also hand crafted in small batches. It serves as the perfect accompaniment to cheese.

The third gold medal product was 'Cowboy Kisses' in the Savoury Preserves Category. The umami flavoured, candied jalapeno pickles are crunchy and spicy combining flavours and textures that truly resonate.

Kristina said it was an honour to win the prestigious event, particularly given Tasmania's reputation as home to some of the country's finest artisan food producers.

"We entered the awards this year seeking formal feedback on our products to gauge our progress and we are honoured to have received the Champion titles in two categories.

"We've been humbled by the positive feedback of our Fleur cracker, often featured as a special indulgence on grazing platters, both domestically and abroad."

• Look out for Silver Tongue Foods products at Whites IGA.



Salvo's finest coming to town

FROM PAGE 1

Nambour Sunday Rummagers market between 10.30am - 11am.

"This is a chance for the general public to see the band performing in Nambour, and also an opportunity to come into town and donate to the annual Red Shield Appeal," said IamNambour's Rhonda Billett. "It was a wonderfully unexpected bonus to learn that both events were happening on the same day."

Captain Donaldson said the Salvation Army in Australia helped someone in need every 17 seconds. This was largely thanks to their Red Shield Appeal which enabled them to provide shelter, safety and support.

"Over the last year, The Salvation Army has assisted over 250,000 people in a variety of ways and has dispensed financial assistance worth almost \$25 million dollars to those impacted by crisis, disaster and hardship," he said.

• Tickets for the formal concerts are available at <https://www.trybooking.com/CPSJZ>

Yandina Writers Group

YANDINA Writers Group is looking for new scribes to join in the Wednesday morning session. This is not a course-based writing experience but an informal gathering for writers to read and share their creations.

Structure Your Story. Fiction, non-fiction, poetry, YA, any genre.

In the downstairs room at Yandina School of Arts, Stevens Street (lower entrance).

Show up for 10.30am start.

Contact caracarol@hotmail.com

WHITE'S

IGA

Save on

FRESH

🛒

AVAILABLE UNTIL TUESDAY 28TH MAY 2024

Community Co Beef Lasagne 1kg
\$1 per 100g

\$9.99

ea

SAVE \$5.01

Australian Pink Lady Apples

\$3.90

kg

Australian Brown Onions 1kg
\$2.50 per kg

\$2.50

ea

1KG BAG

SunPork Smoked Hocks
60c per 100g

From the Deli

\$5.99

kg

SAVE \$5.01

Australian Whole Economy Beef Rib Fillet

\$19.99

kg

Australian Kingston Crown Beef Roast

\$11.99

kg

Australian Beef Topside Roast

\$14.99

kg

NEVER MISS A 1/2 PRICE SPECIAL

SCAN & SUBSCRIBE TO SAVE!

HOT PRICE GUARANTEED!

Baldwin's Lawyers to host Chamber drinks at the Precinct

THIS Friday May 17, Nambour Chamber of Commerce will be hosting Drinks@5 at *The Presynct* in Nambour, as part of their ongoing celebration of Small Business Month.

"The get-together will be held from 5pm to late, with attendees welcome to stay on to enjoy a live music performance," said Chamber President Mark Bray.

"This is the first time we have held Drinks@5 on a Friday night and we would love to see as many of our members there as possible, and we also invite other business owners who are keen to network locally, and get a feel for what the local Chamber has to offer.

"This function is free for members, \$5 for non-members and the price includes a free welcome drink.

"I also really encourage people to come along to enjoy *The Presynct*," Mark said.

"It is a fantastic venue which hosts world class live music of all genres," he said.

"The atmosphere is terrific."

Tickets can be secured by clicking on the link advertised on the Chamber Facebook page.

Every small business has a story to tell

A business story in the *Sunshine Valley Gazette* helps explain your business in a way that appeals to local customers so they will be more likely to buy from you.

Business stories are engaging, memorable and they make all your other marketing work better. Phone Tanya 0400 069 711 or email tanya@svgazette.com.au.



Assistant Cheesemaker Adam Paprill, CEO (cheese eating officer) Beth O'Leary, and Head Cheesemaker Stefan Wilson.

The taste of success:

Woombye Cheese number 2 in the world

by Tanya Outridge

THE Woombye Cheese Company's washed rind product has taken out second place at the World Cheese Awards in Wisconsin.

"Wisconsin is basically the cheese capital of the world and to have had our cheese judged and recognised in this way, on a stage of that size is just incredible," said Woombye Cheese CEO Beth O'Leary.

The global competition brings more than 3,000 cheeses and 60 judges together over 5 days to award the best of the best.

"It sounds like such a cliché but I really do think the secret is in the quality of our local ingredients, the fact that we have a small range that

we have really perfected, and the absolute passion our team has for making beautiful cheese," Beth said.

"We use Maleny milk, and our cheesemakers, Stefan Wilson and his assistant, Adam Paprill carefully make everything by hand. It is a labour of love."

According to Beth, cheese is 'having its moment' right now, as people become more aware of the ingredients in their food and the quality of the food they are consuming.

"Cheese takes a long time to make, but it is essentially a very simple food that can elevate any meal, from a toastie to a cheese platter, a soufflé, or a dessert," said Beth.

"I love having the opportunity to

not only produce beautiful cheeses, but to also educate consumers about the variety of wonderful ways they can be enjoyed, and to share them with people."

Beth and the team at Woombye Cheese have taken their fabulous products 'on the road' and have been met with great enthusiasm by all who have sampled their cheeses.

"Sharing our products at events and festivals is so much fun, because we get to see people's reactions first hand," Beth said.

Cellar Door Saturdays

"And now we are also opening the cellar door to visitors on Saturday mornings between 10am and 2pm so people can come along and see where the cheese is made, and to taste test it for themselves.

"This award is huge for us, for our region, and for the growth of this industry. I am so grateful for our team here. You guys make a lot of people happy."

Group helps people with end-of-life decisions

MANY Australians are unprepared for their passing, leaving their families to navigate complex decisions they are often not equipped to handle. A number of wills in Australia end up being contested, which can lead to generational family rifts.

Factors such as family dynamics, blended family structures, and evolving societal values significantly influence decisions regarding asset distribution.

Wills serve not just as legal documents but as crucial tools for family planning.

TULE (Tying up Loose Ends) is a community group committed to supporting individuals in making effective end-of-life decisions.

"Deborah Moseley, a seasoned professional in conflict resolution, has been active in the community for many years," said TULE spokeswoman, Fleur Adamson.

"She is now focused on guiding us through the challenging conversations required when we confront significant changes in our abilities and ultimately face our mortality.

"Now is the time for open, heartfelt communication that strengthens and enriches all our relationships," she said.

TULE is hosting an event on May 19 from 2pm-4pm at the Maleny Playhouse at the Showground, Maleny.

Cost is \$10 which includes afternoon tea, and tickets can be purchased online at www.trybooking.com/CQXRM or at the door.

"Come and get involved in how an awkward conversation might play out."

• For more information call Fleur on 0409 470 822 or go to www.tynuplooseends.com.au



The Denture Care Group Sunshine Coast

Caloundra | Maleny | Woombye



MAKE THE MOST OF YOUR HEALTH FUND THIS YEAR
CONTACT US TO FIND OUT HOW

Book a Consult with us this month so we can help you get the most out of your benefits and have you leave smiling.



P 07 5442 1721

HINTERLAND VIEW DENTAL 6 Hill Street, Woombye
denturecaregroup@gmail.com



OUR SERVICES

- TYRE FITTING
- TYRE REPAIRS
- TYRE ROTATIONS
- WHEEL UPGRADES
- WHEEL ALIGNMENTS
- BATTERIES & WIPERS

(ALL TYRE BRANDS AVAILABLE)

**22 Coronation Ave,
Nambour**

(Opposite the Nambour RSL)

Ph: 07 5441 2133



Paris 24 'too important to miss,' says Mayor

SUNSHINE Coast Mayor Rosanna Natoli will travel to Paris in July to learn and participate in an on-ground Olympic Family Program and has opted to pay for her own flights to the event.

Sunshine Coast Council ratepayers will fund \$7500 for the Mayor's accommodation.

Sunshine Coast Council CEO Emma Thomas said the decision to pay for Mayor Natoli's accommodation was a business decision that would stand to benefit the Sunshine Coast community significantly.

"Council was originally advised that the Mayor's accommodation in Paris would be funded as part of the Olympic Family Program," Ms Thomas said.

"We were made aware that this is not the case following the April 25 Ordinary Meeting, at which it was voted unanimously that Mayor Natoli should participate in the program."

Sunshine Coast Mayor Rosanna Natoli said her presence in Paris remained critical in securing a positive Games legacy for the region.

"Am I greatly disappointed that the accommodations cost will not be covered as we originally thought? Yes absolutely," Mayor Natoli said.

"Having discussed with my Councillor colleagues and weighing everything up, we all agreed this opportunity is too important to forgo and that the value of my participation in the program will significantly outweigh the cost of my accommodation."

"I remain fiercely committed to maximising the opportunity to be on the ground at Paris 24 and using my learnings to guide our Games preparations in the coming years."

The Mayor will be travelling alongside other Olympic Delivery Partners. In 2032, the Sunshine Coast is proposed to host nine Olympic and Paralympic events across four locations.



Peachy G owner Juanita Griffin, is flanked by Brooke, left, and Molly.

Peachy G welcomes new stylist to hairdressing team

JUST 18 months after opening in Short Street Nambour, Peachy G's Juanita Griffin has added another stylist to her team.

"It took about 6 months for me to find a stylist whose practice aligned with ours," Juanita said.

"I am so thrilled that Molly has joined Brooke and myself in the salon."

Originally from Scotland, Molly Short has been in Australia for just four months and has quickly slotted in at Peachy G.

"Molly trained in Edinburgh and has been working in the industry for 6 years," Juanita said.

Although she is excellent in all aspects of hair styling, she is a real blonde colouring and blonde balayage specialist.

"When you are dealing with blonde colouring you really have to know what you are doing, to not only give your client a fabulous look, but to also maintain the integrity of their hair. Molly has a real passion for this work and it shows."

The growth of the salon has been made possible by strong support from the Nambour community.

"I have had amazing local support, it has blown me away, actually," said Juanita.

"My business is growing and going from strength to strength thanks to that support and the dedication of my stylists," Juanita said. "I feel so blessed."

• Peachy G is in Short Street. Phone 0448 722 672.

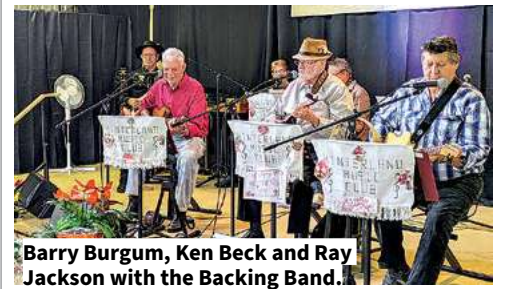


Barry Burgum thanks Cr Winston Johnston.

New stage, sound boost for music club

LAST Saturday the Hinterland Music Club launched a new sound system and performance stage at the Maleny Historical Village big barn. Country music fans acknowledged generous State and Local support as they were joined by Councillor Winston Johnston, Historical Society representatives, and President of the Club Barry Burgum.

Barry welcomed the funding boost and proposed to start a practice day to encourage beginner participation. He also wants to broaden the easy listening style of music being played and sung in relaxed surroundings on the second Saturday of every month.



Barry Burgum, Ken Beck and Ray Jackson with the Backing Band.



Col Lee and Lyn Chapman with June Lindon.



Crimsafe® is proudly Australian Made

You'll never regret investing in a Crimsafe door ...

MOBILE SERVICE
We come to you

When you want the ultimate in security, demand Crimsafe® from Custom Curtains and Shade. Crimsafe's stainless steel mesh far exceeds Australian standards. When you're not prepared to compromise, Crimsafe is the solution. If it's not Crimsafe, it's not crim safe. For full specs & prices, contact the Crimsafe specialists ...

CUSTOM Curtains and Shade **5441 6000**
Shop 5/46-50 Hospital Road, Nambour
www.customcurtains.com.au

Blinds • Awnings • Curtains • Shutters • Security • Wallpaper

Brady's Fruit

FRUIT & VEGETABLE SPECIALIST
• Wholesale & Retail •

Col & Sandy Pearce
Ph/Fax 07 5445 9260

Park at your leisure where shopping is a pleasure

Woombye-Palmwoods Rd.
Palmwoods, Q. 4555

AUTOELECTRICS QLD

& Mechanical

Air Conditioning Mechanical Repairs

Auto Electrics Log Book Servicing

227 Nambour Connection Rd, Woombye
autoelectricqld.com.au **5442 2278**

Local film festival goes global

THE Sunshine Coast's best film and TV talent will be on show at the Showdown Showfest film festival in June.

The two-day red-carpet event on June 21 and 22 will premiere six winning short films, locally-produced by the Sunny Coast Showdown team and presented by Bendigo Bank Community Bank, as they compete for the festival's prize gong, the Gold Yewwy award.

The event will also premiere director Chris Sun's acclaimed comedy short film, *Loophole*, starring Hugh Parker (*The Family Law*, *Elvis*) and Libby Munro (*Troppo*, *Wild Woman*) and the Hello Sunshine 'Light, Camera, Lunch!' story-telling event will host Showdown co-founders and Showdown Winner Emma Morgan.

The Showdown Showfest film festival is an offshoot of the Sunny Coast Showdown—a not-for-profit film event that provides mentoring, funding and support to local filmmakers and helps them produce their film and TV projects. It also provides training and opportunity for more than 100 local cast and crew.

Showdown productions this year attracted some of Australia's best actors in Darren Gilshenan (*Harrow*, *Colin from Accounts*), Rhys Muldoon (*House Husbands*, *Bay of Fires*), Kate Atkinson (*Wentworth*, *Underbelly*), Claire Weller Price (*Boy Swallows Universe*, *Apples Never Fall*), James Patrick Reed (*Blue Heelers*, *Mission: Impossible*) and Rory Williamson (*Home and Away*, *Paper Giants*).

Lilliana Bowrey (Netflix's hit series, *Surviving Summer*) is being touted as the next-big-thing and plays the lead in the romantic thriller, *Lured*.



From left, Showdown Co-Founder Dan Munday, third assistant director Jaymee Sudrajat, actors Darren Gilshenan and Anna McMahon, line producer Eve Donohue, producer Janneke Williamson, director of photography Andrew Maccoll, and director Ryan Neil Butler.

Lights, camera, action! Sunny Coast Showdown chooses Nambour set for filming

FOUNDED by Nambour High graduates, Jon Coghill (*Powderfinger*), and Dan Munday (*US Survivor*), Sunny Coast Showdown is presented by the Bendigo Community Bank—Tewantin, Cooroy, and Marcoola, and is now in its third year.

"The aim of Showdown is to increase the production capacity of the Sunny Coast in order to create a lucrative and sustainable film industry," Dan said.

"Showdown produces 6 short films and documentaries, submitted by the community, and led by industry professionals who mentor and train up-and-coming filmmakers and crew."

Last week the crew were filming "Stiffs", a mockumentary in the vein of "The Office" and "Parks and Rec", which was written by award winning writer and actor Stephen Walker.

The two day shoot took place at the Eddie De Vere building, in the Sunshine Coast Council chambers in Nambour.

"There were 60 crew and volunteers, from camera operators and directors, to costume designers and makeup artists," said Dan.

"I want to extend a huge thankyou to Tiff Bower and Matty Johnson from the council for securing the location."

The films will premiere as part of the Showdown Showcase at The Station SC in Birtinya on June 22nd.

You can find out more about Sunny Coast Showdown at www.sunnycoastshowdown.com.au.

Zonta takes lead in community actions against domestic violence

THE Zonta Club of Blackall Range is making significant strides in the fight against domestic and family violence, showcasing the power of a dedicated community-driven initiative.

The growing club is actively engaged in various endeavours to combat the pervasive issue.

One notable achievement is their involvement as founding members of Speak Up Now, an inter-service club collaboration dedicated to creating a society free from the scourge of domestic violence.

Through Speak Up Now, the Zonta Club has contributed to initiatives such as school workshops promoting respect, awareness campaigns in public spaces, and forums addressing elder abuse.

Additionally, they provide financial support to Sunshine Coast refuges, advocate for safe phones, and aid in girls' education through the Teacher in a Box program in Kenyan refugee camps.

Candlelight Ceremony on May 16

To further raise awareness and commemorate victims of domestic violence, the Zonta Club invites the community to join them at the Candlelight Ceremony at Tesch Park, Maleny, on May 16th at 5 pm.

Additionally, on July 28th, they welcome participation in the "Wuthering Heights of Mapleton" event, a worldwide fundraiser in aid of Speak Up Now.

Need legal advice about retirement living?

David Wise Solicitor

Specialist advice for residents and prospective residents of retirement villages, over 50's resorts, and manufactured home parks, including entry, exit, dispute resolution, Wills, Powers of Attorney and Estates.

0412 254 080 | principal@davidwisesolicitor.com.au
www.davidwisesolicitor.com.au

MEMBER Queensland Law Society.

Earthmoving • Cranes • Trucks • Hydraulics • Attachments

GR FLEET SERVICES
DIESEL MAINTENANCE & REPAIRS

We service and repair all makes of earthmoving machinery, cranes and trucks. From Warranty Servicing to hydraulic hose repairs we have you covered.

FULLY EQUIPPED WORKSHOP + FIELD SERVICE

Authorised Dealers

169 Nicklin Road, Palmwoods • 5457 3066 • grfleet.com.au

If oil is your medium
DON'T MISS THE ANNUAL WINSOR AND NEWTON SALE

WINSOR & NEWTON Oil Colour

25% off

Includes: Artists' Oil, Winton Oil, Artisan Water Mixable Oil and Griffin Alkyd Fast Drying Oil Colour.
While stocks last. Sets not included. Sale ends 31/5/24

7 Stevens Street Yandina, Q 4561

Yandina Art & Framing
Framing | Art Space | Art Supplies

ON SHOW
LOCAL ARTIST
Tarja Ahokas

Renowned for her graphic depictions, Tarja takes us into the world of birdlife with "Birds Journey"
Inspired by birds and their lessons for life's journey

Photo by: Indigorese Debra Buchanan

admin@yandinaartframing.com.au 07 5446 8000 Trading 6 days: Mon - Fri 9:30 - 4 Sat 9-2

It's a privilege to represent you

David Law
Division 10 Councillor
david.law@sunshinecoast.qld.gov.au



I am honoured and it is a privilege to again represent the hinterland communities of Division 10 for another term of Council. I am looking forward to continuing to work with you, helping to shape and improve our communities for us all.

New home for the Reds

The 'Home of the Reds', home to 350 Nambour Yandina United (NYU) Football Club players is enjoying a new lease of life! We have just completed a \$1.7 million club upgrade to the sports club facility – a real boost for the club and the weekend Yandina Community Markets, which it hosts. Read more at www.oursc.com.au

A fun way to get healthier

Council's Healthy Sunshine Coast program offers more than 50 regular health and well-being activities across the region to help you get out and move your body. Choose from 'Mat Pilates on the Green' at Palmwoods, Aqua Aerobics or Jazzercise in Nambour, or 'Strength and Stability for Older People' at Mapleton to name a few. Registration for the program is free, but essential. Once signed up, you are able to attend a range of low-cost health and wellbeing activities around the region, which are either \$10 (or \$5 with a Health Care/Pensioner card). For more information visit Council's website and search for 'Healthy Sunshine Coast'.

Get ready for Buy Local Day

Mark your calendars for the Sunshine Coast's first ever Buy Local Day. I encourage our local businesses to get ready for this event. Buy Local Day will be held on Saturday June 22, and we are collaborating with Buy Local Sunshine Coast to call all local businesses and consumers to get involved. Find more information, plus a suite of marketing material and assets to help with promotion by visiting www.buylocal.sunshinecoast.com.au/buy-local-day.



Nurses and midwives from Nambour General Hospital.

Community offers heartfelt thanks to Nambour nurses & midwives

IN the wake of International Nurses' Day and International Day of the Midwife, Nambour General Hospital nurses stand at the forefront of a heartfelt campaign recognising their invaluable contributions.

Sunshine Coast Health's recent call for the community to send messages of support to be shared at an awards ceremony was met with an outpouring of gratitude.

Executive Director Nursing and Midwifery Lisa Newport expressed her appreciation for the dedication and compassion shown by nurses and midwives.

As part of the annual awards ceremony,

heartfelt messages from the community were highlighted, acknowledging the unwavering commitment of these healthcare professionals.

The messages serves as a poignant reminder of their efforts and the profound impact they have on patient care. This initiative underscores the importance of acknowledging and celebrating the remarkable work of nurses and midwives in our healthcare system.

The awards are over but you can still send your message of appreciation to sc-communications@health.qld.gov.au or comment on Instagram or Facebook @sunshinecoasthealth.

Mayor pushes for more

• from page 1

and/or lower incomes," Mayor Natoli said. "I therefore urge the Australian Government to maintain a laser-like focus on providing relief now to those members of our community who are most vulnerable to cost of living pressures and those struggling to find affordable housing.

"The Australian and State governments have many more policy levers at their disposal than Council to alleviate the burden of rising prices and household costs and I encourage them to do everything they can in this space."

Mayor Natoli said more support for pensioners, increasing subsidisation of medicines available on the Pharmaceutical Benefits Scheme, accelerating the roll out of the outcomes of the National Housing Accord or further taxation relief measures for those on lower incomes was needed.

"What is equally important for a community like the Sunshine Coast – which for nearly three decades has experienced one of the highest growth rates of any region in the nation and will continue to do so – is that we have the infrastructure that supports and accommodates that growth," she said.

"Our Council's ask is very simple. We want to see the Australian Government reinstate what we lost last November when the Australian Government revised its Infrastructure Investment Program."

Mayor Natoli said she specifically wanted to see the following projects included in the Federal Budget:

- reinstatement of the \$7 million in funding withdrawn from the Caloundra Transport Corridor Upgrade project
- restoring the critical \$160 million commitment to jointly fund – with the State – Stage 1 of the Mooloolah River Interchange.

Proudly serving the Sunshine Coast for over 16 yrs

DentalExcel

WE'RE HERE FOR YOU!




NOW OPEN FOR ALL PROCEDURES

In line with Stage 1 restrictions, we look forward to welcoming you back for ALL of your dental needs.

COVID-19 Screening measures in place to ensure safety.

Dental Excel is grateful for the dedication of our staff who have been there for your emergency treatments throughout this crisis. We are still here for you and still adhering to strict hygiene precautions to keep you and us safe.

Dental Excel is proud to be a part of the MARLEY DENTAL GROUP

DentalExcel

Bulk Billing Medicare Child
Dental Benefit Scheme for Eligible 2-17 yrs



- Family Dentistry • General Dentistry • Cosmetic Enhancements • Zoom® Teeth Whitening
- Veneers • Crown and Bridge • White Fillings • Preventative Dentistry • Children's Care
- Gum Disease Maintenance • Dentures and Veterans Affairs • Dental Implants

Payment plans available - no interest ever

Open Monday to Saturday • Early and Late Appointments  

Ph: 5445 0166 2-4 Margaret Street, Palmwoods www.dentalexcel.com.au

URBAN DEPOT RECYCLING CENTRE NAMBOUR

Get Cash for Containers

- Collect your eligible containers and remove the lids.
- Visit us at our full drive through recycling experience.
- Let us sort and count your containers.
- We bring your cash refund to your vehicle or we deposit your refund into your scheme ID account.

EASY!



Visit us at our full drive through recycling experience at 7/1 Windsor Road, Burnside | 0492 846 936
info@urbandepotrecycle.com | urbandepotrecycle.com
@URBANDEPOTRECYCLE



ASPHALT & BASE CONSTRUCTION CALL JOSEPH 07 5478 9834 | 0402 932 159

38 YEARS EXPERIENCE **FREE QUOTES**



RED BROWN & BLACK ASPHALT | MACHINE & HAND LAID HOTMIX ASPHALT

- CAR PARKS
- SALES YARDS & DISPLAY AREAS
- DRIVEWAYS
- TENNIS COURTS
- FOOTPATHS, KERBS
- GRAVEL ROAD
- CRACK SEALING
- PRIVATE ROADS
- SPEED HUMPS
- MODERN, STYLISH EDGING
- EXCAVATIONS & DRAINAGE

www.asphaltbaseconstruction.com.au

SPAR



WOOMBYE

Market Specials



\$1 kg.

Australian Kent Pumpkin



\$3.60 kg.

Australian Imperial Mandarins



\$4.50 kg.

Australian Broccoli



\$3.20 kg.

Australian Whole Celery



\$3.50 EA.

Australian Mushroom Cup or Sliced 200gm Pack
\$17.50 Per Kg

LOW PRICES ALL DAY EVERY DAY



PAYLESS EVERYDAY
\$6 ea.

Amelia's Filo Pastry Range 180gm



PAYLESS EVERYDAY
\$19.50 kg.

Primo Champagne Leg Ham



PAYLESS EVERYDAY
\$35 kg.

KRC Hot Or Mild Salami

SCAN TO SUBSCRIBE TO OUR LATEST WEEKLY CATALOGUE STRAIGHT TO YOUR INBOX!



Specials available Wednesday 15th May until Tuesday 21st May 2024

WOOMBYE

20 BLACKALL ST

OPEN 7 DAYS!

PH: 5413 8007



Specials available while stocks last. Limit rights reserved. We reserve the right to correct any printing errors and omissions.



BushCare also includes Creek Care

Petrie Creek BushCare News
with Norm Morwood

HERE'S a photo of some of the action last Friday at Petrie Creek with Trevor Morrison of ECOllaboration collecting samples of water.

The water is then checked for presence of aquatic macroinvertebrates.

In this case by students of Nambour Christian College as part of their Geography course. The site is Florabunda Pocket, one of our BushCare sites restoring natural habitat, near the Rugby Grounds at Woombye.

This test showed several species and the water at the site was declared to be relatively healthy.

If you'd like to join us in BushCare activity, the next volunteer Petrie Ck BCSC Action Bees will be:

- Namba Creek on Saturday 18 May starting at 8am. Access is through the main gate of the Model Rail Park off Florence St Nambour.

- Gulung Gung on Wednesday 22 May starting at 8 am. Parking is available in the NE part of Aldi Carpark in Howard St Nambour and then walk down to the creek by following the rough track that skirts the north of the Aldi carpark. Alternatively walk across the new park from Quota Park off Matthew St.

- For more info and to check starting times and dates etc of events, see the Petrie Creek Catchment Care Group Facebook and for additional info www.sunshinecoast.qld.gov.au/bushcare or contact Norm Morwood 0409 63 99 44 or normmorwood@gmail.com.

Vandalism buster happy to help:

Good Samaritan cleans ugly graffiti off CWA Hall

by **Tanya Outridge**

A local businessman has sprung in to action to remove ugly graffiti from a Nambour hall.

Lloyd Bishop of Pressure Washing QLD was alerted to the problem by local business-woman, Deb Hammond who noticed the graffiti on the CWA Hall in Short Street Nambour.

Deb reached out to Lloyd to buy some product to clean the paint off the wall.

"There was a lot of damage to the wall and I knew that it would be difficult to remove," Mrs Hammond said.

"Lloyd told me that he would go and have a look at it himself, and the next thing I knew, he had cleaned it all off. He did it on the Labour Day Public Holiday, and I just thought it was an incredibly generous thing to do."

Big problem

Lloyd was more than happy to help out.

"Unfortunately, graffiti is a big problem everywhere you go," he said.

"It is my pet peeve. I have hated the look of it since I was a kid, living in Sydney. It is very difficult to remove and it costs taxpayers millions of dollars to clean it up because it can't be removed with ordinary pressure cleaning."

As someone with 40 years of experience in this type of cleaning, Lloyd knew exactly what needed to be done.

"I get my chemicals from South Australia and they are fantastic for this type of job," he explained.

"The President of the CWA called me to thank me, which was really nice. But I was just happy to help."

Lloyd looks after all kinds of domestic and commercial pressure cleaning, including house washing, driveways, paths and soft washing.

"We have been very busy because of the rain, because it leaves walkways and paths extremely slippery," he said.

"Mould is also a problem that we can take care of and it is important to get on top of it



Lloyd removed the graffiti visible in the background. Below: the cleaned-up CWA Hall.



because, apart from the known health hazards, mould spores spread from property to property, which is not a good thing."

You can call Lloyd on 0411 290 585 to find out how he can get your property clean.

"If I don't answer, leave me a message," he said. "It means I am working, and water and phones aren't a good mix!"

Gov't's Community Safety Plan

from **Rob Skelton**

State Member for Nicklin
nicklin@parliament.qld.gov.au



WE all deserve to feel safe in our homes, and in public. That's why we're investing in the frontline, and putting money into the things that work to strengthen community safety.

New Premier Steven Miles, alongside Police Commissioner Steve Gollschewski, has delivered a comprehensive community safety plan to further reduce crime.

The plan is backed by \$1.28 billion in additional investment that's based on the advice of police, victims and experts.

It delivers more police, more police resources and more funding for the DFSV sector to prevent crime, intervene early and make sure offenders see consequences for action.

This builds on the work I've done to help deliver new police stations in Nambour and Cooroy, as well as advocating for regular Mobile Police Beats in busier areas.

\$1000 off your energy bill

We're taking \$1000 off your power bill from the first of July!

A \$1000 lump sum credit will be applied automatically to your power bill, and any amount you don't use is used as credit for future bills.

It's only possible because we've made the big multinational coal companies pay their fair share. Our government's coal royalties ensures that the big coal mining corporations pay Queenslanders for extracting Queensland's natural resources.

Nurses & Midwives Week

This past week was International Nurses and Midwives Week. Our nurses and midwives work incredibly hard to provide the best possible care to our communities, making up more than half of Australia's health workforce across a number of healthcare settings including our hospitals and residential aged care facilities. Let's take the opportunity to show our appreciation for the hard work that our nurses and midwives do.



NOW SELLING – BOOK A TOUR TODAY!



AVAILABLE NOW

NOW
\$925,000

4 Wembley Road
Coolum Beach



3



2



2

Discover the epitome of coastal living with this spacious 3-bedroom, 2-bathroom stand alone home with a double garage.

It is ideally located right across from The Hub, offering convenience and a sense of community. Situated just moments from the Sunshine Coast's world-famous beaches and the vibrant seaside villages of Noosa and Maroochydore is Coolum Waters Retirement Community.

BOOK A TOUR

Please call Bronya on **0439 862 940** for more information or to book a tour



AVAILABLE NOW

FROM
\$295,000

98 Windsor Rd
Burnside



1



1



1

Impressive one and two bedroom units now available at Rotary Garden Village.

You'll have access to wonderful amenities right at your door step with easy connection to some of the Sunshine Coast's best bowls, golf and RSL clubs nearby.

BOOK A TOUR

Please call Bronya on **0439 862 940** for more information or to book a tour



Men's Shed builds art screens for St Luke's Arts Fest

THE Graceville Arts Festival, a highlight of the Sunshine Coast's arts calendar, has received some welcome support from the handymen at the Nambour Men's Shed.

The festival is run by Lutheran Services' Graceville Centre and staged at St Luke's Lutheran Church, Nambour, from June 20-23.

Graceville Centre's Zoe Rames said the art festival was an annual celebration of creativity and collaboration that allowed artists with lived experiences of disability and mental health issues to showcase their talents.

The centre has provided mental health services from its Nambour site for more than 50 years, helping Sunshine Coast residents live their best lives.

This year the artists will hang their works on 18 new display screens constructed by members of the Men's Shed with materials provided by a grant from the Sundale Community Foundation. The screens will be shared with the Nambour Show Society for their art competition.

Nambour Men's Shed Vice-President Jim Simonsen said the group of around 60 members was always willing to lend a hand, and their skills, to help their community.

"We enjoyed working on the project to support the Graceville Arts Festival. The task was a bit of a challenge but we did it," Mr Simonsen said.

"The largest double-sided

screens are 2400mm by 1800mm with two wings that can be disassembled for easy storage.

"We have regular clients of the Graceville Centre who come to do woodwork with us. We help by assisting with some of the machine work. It's great to have them here, we are all part of the local community."

Funds raised from the arts festival, now in its fourth year, help support the creative programs for the Graceville Centre's clients.

Registrations are open to exhibitors for the four-day event that includes workshops, market stalls, food and family fun.

Many of the artworks will be offered for sale. Entry to the art exhibition is free with a fee of \$5 for workshops.

Graceville Arts Festival will be held at St Luke's Church, 10 Sydney Street, Nambour.

Care where all are welcome:

Lutheran Services is one of Queensland's longest established not-for-profit aged care and community service providers.

They provide services, support and accommodation for older people, young people, people living with disability or mental health concerns, and people experiencing domestic and family violence. Lutheran Services have served the people and communities of Queensland since 1935 drawing on a rich Lutheran tradition of care where all are welcome.



Writer pens collection of short stories

FOLLOWING the success of his recent novels, Cooloolabin fiction writer Ian Laver has just published a collection of short stories, *Deadly Sins*.

The stories have been chosen from his earlier writing and offer diverse characters. Some are dark, cruel, criminal and others innocent, brave, youthful.

These characters come from all layers of society and each story

beckons the reader to the next.

Ian has published two novels, *Crucial Step* and *Uneasy*, and is fine tuning *Comeback*, the follow up to *Uneasy* which traces the journey of Detective Sergeant FitzMichael on his quest to reinstate his credibility in the Queensland Police Service.

• Read more about Ian at www.facebook.com/ian.laver.18 or at www.IanLaver.net.



Rescued plover chicks hatch success

Nature Watch News from Donna Brennan. Wildlife Volunteers, WILVOS | 5441 6200 | www.wilvos.org.au

IN the maze of WILVOS 24 hour work, not all is doom and gloom. Some animals may just need short-term care, and the majority of others, such as orphaned young, have positive outcomes. We feel every loss, and ask ourselves what we could have done better.

Over a month ago a local school had a busy time booked for their sports oval. Of course that manicured grass attracted the masked lapwings, usually known as plovers. They looked on it as a lovely spot to lay their eggs.

Fortunately, workers from Bio-diverse Environmental were on the scene and the eggs were removed before they were trampled. The three eggs were settled into the incubator.

After a month it was time to get nervous! Please hatch! One night two of the eggs had little white spots where holes had been pecked out, and a familiar cheeping sound was heard. Next morning, thirty days after their arrival, two little wet chicks greeted me. Plover chicks are adorable. Their big strong legs soon have these tiny chicks stumbling around. They become self feeders very quickly, pecking at everything. Sunshine and exercise are necessary, as their rehabilitation needs to mimic their habits in the wild. Running, sleeping, feeding is a continuous cycle.

Then 48 hours later the third chick hatched, in the early hours of the morning. It was soon up and about ready to meet his siblings. Definitely one of my favourite native animals!

Sponsorship applications

NOW OPEN

From 1 May to 31 July, 2024

If your community group is from the Palmwoods area and would like to apply, please speak to one of our team members for more information.

No applications will be accepted after the 31 July 2024.

Heritage | Palmwoods
Community Branch

Visit your local community branch at
Palmwoods Plaza ☎ 07 5294 0600

Local sporting champions

from Ted O'Brien
Federal Member for Fairfax
ted.obrien.mp@aph.gov.au



RECENTLY I had the privilege of awarding a number of young athletes from our community *Local Sporting Champions Awards* in recognition of their talent and hard work. The Local Sporting Champions program provides financial assistance for coaches, officials and competitors aged 12-18 participating in championships to assist in paying for travel fees. If you'd like to learn when the next grant round opens, get in touch with my office at ted.obrien.mp@aph.gov.au. Congratulations to everyone who received an award! From surf lifesaving to running and everything in-between, these champions are excelling in their chosen sport.

Carbon Tax by Stealth

Labor never changes. It turns out that there is indeed a carbon tax under the government that Anthony Albanese leads. According to an article in *The Australian* recently, Australians could see their power bills increase further by \$1300 a year to pay for the government's "carbon tax by stealth". Labor is making the Australian people pay for its mistakes.

Budget week

Labor will deliver its third budget this week. Their first two budgets have driven inflation through the roof. As a result we've seen 13 interest rates rises since May 2022 which are hurting families. The obligation of the Treasurer now is to change course and undo the damage his government has been doing. Australians deserve real measures to ease cost-of-living pressures, housing, and energy costs. The RBA can only do so much. Government too must act.

Million Moves continues

The Million Moves challenge continues for the month of May, and I'll be competing against Llew O'Brien MP in Wide Bay, Andrew Wallace MP in Fisher, and Terry Young MP in Longman. 75% of adults don't meet the guidelines for physical activity—but we can change that. Sign up at tedobrien.com.au.

Anti-Semitism on university campuses demands response

I am deeply concerned about the rise of anti-Semitism on our university campuses and within our communities. This global pandemic of hate is spreading like wildfire, fuelled by misinformation and extremist ideologies.

It is distressing to witness the proliferation of anti-Semitic incidents, from online forums to physical protests on university campuses. Jewish students and staff are facing discrimination and abuse, with some being forcibly barred from attending classes due to safety concerns.

Recent events at universities across Australia, including the University of Sydney, the University of Melbourne, Curtin University, the University of Queensland (UQ), and the Australian



Federal Member for Fisher Andrew Wallace, left, has visited the sites of the massacre of Israelis.

National University (ANU), have highlighted the urgent need for action.

At UQ, for example, the display of the flag of the Popular Front for the Liberation of Palestine, a recognised terrorist group, alongside the Aboriginal and Palestinian flags is deeply troubling. Similarly, student leaders at ANU have called for unconditional support for Hamas, a terrorist organisation responsible for heinous sexual, political, and gender-based

Letters to the Editor

The Gazette welcomes letters to the editor. Please keep your letters brief (under 300 words). All things being equal, preference is given to topical, shorter letters on local matters of widespread interest. Very brief letters are particularly appreciated and well-read.

violence.

The complicity of some university staff members and the silence of political leaders only serve to exacerbate the problem. It is imperative that those in positions of power take a stand against anti-Semitism and unequivocally condemn all forms of hate speech and violence.

Furthermore, it is essential that universities enforce strict disciplinary measures against students and staff who engage in anti-Semitic behaviour. There must be zero tolerance for discrimination and bigotry on our campuses.

Law enforcement agencies also have a crucial role to play in ensuring the safety and security of Jewish Australians. They must actively investigate and prosecute hate crimes, sending a clear message that anti-Semitism will not be tolerated in our society.

I urge our political leaders, university administrators, and law enforcement authorities to take decisive action against anti-Semitism. Silence is not an option. We must stand in solidarity with the Jewish community and work together to combat this scourge of hatred.

— Andrew Wallace MP, Federal Member for Fisher

Support for Bonza 'Legends'

AS A Sunshine Coast resident I have really appreciated the excellent product and service that Bonza developed from our local airport, and flew with them at least 10 times. The direct connections to the north and to other regional places down south and west were brilliant. Their staff were always friendly and down to

earth (in the air!).

I've noticed a fundraiser has been set up by the Flight Attendants' Association of Australia (FAAA) to give extra support for Bonza cabin crew, as they await their entitlements. I'd love more people to be aware of the opportunity to support these hardworking staff who made Bonza so great.

Longer term – I'm really hoping, too, that someone or group is found who can take over the aircraft leases and get them flying again. It was so much work building up to what they have now, and would be a shame to see it finish.

Visit the GoFundMe at gofund.me/fc66b211
— Ben Beaden, Palmwoods

New constitution for MADCA



LAST month at a special general meeting a new constitution was approved for MADCA.

For some time MADCA has planned to become a registered charity with the Australian Charities and Not for Profit Commission (ACNC).

"Becoming a registered charity gives recognition to the charitable nature of many of our activities, and opens up a wider range of funding sources and the possibility of tax deductions for donors," said MADCA President Max Standage, pictured.

MADCA received a Council grant and worked with CPR Group to develop a new constitution to reflect its charitable activities. The new constitution has been approved by the State Government Office for Fair Trading and the next step is to apply to the ACNC for charity status.

For information about MADCA got to madca.com.au or email information@madca.com.au.

Mapleton Country Market

• Join us at the Mapleton Country Market on Saturday, May 25, from 8am to 12pm at the Mapleton State School. Enjoy a variety of food, fresh produce, handmade crafts, and live music.

Welcome to Sunshine Coast Audiology



Sunshine Coast Audiology

Our services include:

- **NOW OFFERING WAX REMOVAL** via **microsuction, curette or irrigation**
- Hearing tests for adults or school-aged children
- Hearing aid fitting, repairs and adjustment from all major brands
- Providers of the Hearing Services Program for eligible pensioners and veterans
- Tinnitus management
- Supply and fitting of ear plugs for swimming, noise and music



Emryn Maclachlan



Anita Burgess

Call **07 5378 2226** or email info@sunshinecoastaudiology.com.au

Shop 10, 1 Scholars Drive, Sippy Downs

www.sunshinecoastaudiology.com.au



Glaucoma, cataracts, & macular degeneration

Safeguard Your Sight with Our Advanced Eye Assessments

Early detection and proactive management of eye conditions like glaucoma, cataracts, and macular degeneration is important. Our personalised assessments use advanced technology to detect signs of these sight-threatening conditions early on. With our comprehensive approach to eye care, you can enjoy peace of mind knowing that your vision is in good hands.

Call the team on **5441 2277**
book online at www.wfoptometry.com.au
or visit 40 Howard Street Nambour

WILSON FITZPATRICK
FAMILY OPTOMETRISTS



Your Local, Family-owned Optometrist since 1984

Sarah Wilson



Dads and kids turned out on force for the Sunshine Pinball event.

Nurturing fatherhood:

Dads' group events coming up in Nambour

THE Thriving Families program at Nambour Community Centre works side by side with families to help nurture and maintain family structures.

Thriving Families recently started a Thriving Families Dad Group which aims to provide Dads the opportunity for them and their kids to participate in a range of fun activities together.

Thriving Families Coordinator Caz May said a recent pinball night at Sunshine Pinball was most successful.

The group has now arranged two more Dad Group events: a movie night on May 15 from 3-6pm (featuring Wal-E) and on June 12 they will be joining with Nambour Mens Shed from 3:30-5:30pm to make bird boxes.

"These events will be open to Dads and male carers of children in Nambour and the Sunshine Coast and their children," said Caz.

• Contact Nambour Community Centre on 5441 4724. Or check out Nambour Community Centre and Thriving Families Facebook pages.



White's IGA Co Founder Roz White and Construction Manager Jeremy Ferraro.
Photo Credit: Peter Wallis

Mooloolah IGA expands to meet growing demand

MOOLOOLAH has seen a surge of new residents, and the local IGA is set to undergo a makeover to cater for the increased demand.

Twelve months on from opening their sixth supermarket at Forest Glen, White's IGA Co-Founders Roz and Michael White have plans to increase the floor area of the Mooloolah store to 1522m2 (an addition of 611m2) and create parking space for 70 more cars.

Roz White said she was also looking forward to increasing their product offering.

"We are delighted that this renovation to our beautiful Mooloolah store will allow us to expand the range of products we can offer to the Mooloolah community.

"It is important to both Michael and I, that we can provide greater choice and a variety of shopping options in an upgraded and modernised store.

"As always, we will have a key focus on our local suppliers and broaden our range of everyday goods at great prices," Roz said.

White's Group will undertake a full interior and exterior refurbishment of the building to

ensure the hinterland character of Mooloolah is preserved.

Development Manager for Primo Property, Christopher Ferraro said his company was delighted to be working on this project with the White's Group.

"While the construction phase of the project will be a significant driver of local employment, the long-term operation of this store ensures there will be jobs for locals into the future and that is important.

"Doing what we can to keep everything local is a key driver for us. We will work hard to ensure all trades working on the project are from the Sunshine Coast region and this includes everything from block layers, concreters, roofers, air conditioning services, steel fabrication to plumbers. It really is a local project, for the local people, by the local people, and that makes us incredibly proud," Chris said.

The project has already commenced and is expected to be completed by the end of this year.

'What's on at the Show?'



Sunshine Coast Agricultural Show Society News with President Rowan O'Hara

"WHAT'S on at the Show?", is a question we are constantly asked. And we can finally answer it now! Get ready for Rolly Polly Quads, BMX riders motorcycle back flips, trial bicycles, tractors, fireworks, and chariot races around the show ring. You have to see it to believe it! And of course, it's not a night's entertainment without Ford vs. Holden V8 Supercars Utes racing around the grounds. And we have *Absolute Aerials* performing regularly during the 3 days. The highlight of our entertainment is Horse Whisperer David Manchon with his *Wild West Show* featuring horses, bison, and Longhorn cattle. But that's not all! We have Side Show Alley, with the Freestyle, Dodgem Cars, the Graviton, the Mirror Maze, the Cha-Cha, plus we have a new ride, the Freak Out!

Woodchoppers

There is fun for kids of all ages. Watch the clever *Professor Wallace's Puppets* in action and relax with a good laugh. Visit our free petting zoo and meet some cute baby animals. Kids can walk our *Farmer's Trail* and go into the draw to win a daily grand prize and so much more. And, of course, we have Australian champion Woodchoppers competing on both Friday and Saturday.

Show Jumping

If that's not enough, we have some of the best horse jumping in Australia, with competitors who come from near and far to jump at our Show.

Looking for a place to unwind and relax? Bring along your picnic basket and sit on our BOQ Hill while enjoying the entertainment. With so much variety, you might find it challenging to decide what to eat, but don't worry, as we've got you covered as we cater to food allergies as well.

And that's only part of the 2024 Sunshine Coast Agricultural Show. June 14, 15, 16, and you get Friday off to come to the Show!

• **Tickets on sale now at sunshinecoastshow.com.au.**

Plan For Me
Working for you

I ♥ ndis

Request a FREE Consultation

We have a wealth of experience in all things NDIS and have been recognised as providing the highest standard of Plan Management.

Do you or someone close to you have a NDIS Plan that requires a Plan Manager?

Plan For Me recognises that every participant is an individual and may require different levels of support when it comes to Plan Management.

We manage your NDIS funding so you can rest at ease knowing that your finances are all taken care of so you can focus on what is important. We are also based on the Sunshine Coast, so we're locals too.

With **Plan for Me** you can choose how much involvement you would like in the process, you can leave it all to us or engage with us every step of the way. It's all about your choice and your control.

To find out more about how **Plan For Me** can help you, contact us today.

We can help advise on the best options to ensure you get the most out of your NDIS funding at **NO COST TO YOU.**

www.planforme.com.au

0466 289 011
support@planforme.com.au

ELITE FOOT CARE
Podiatry • Orthotics • Footwear

Online Bookings Available

Call Elite Foot Care on **5328 3588** to book your appointment

For online bookings www.elitefootcare.com.au

DO YOU HAVE FOOT AND LEG PAIN?

The team at Elite Foot Care can treat:

- Ingrown Nails
- Corns & Callus
- Heel Pain
- Achilles Pain
- Shin Splints
- Arthritis
- Knee & Hip Pain
- Lower Back Pain
- Kids Podiatry
- Diabetic Assessment

Call **5328 3588**

• Private Health Rebates • Medicare Rebates
• DVA Registered • NDIS • Workcover
• Home Care Packages • No Referral Needed

4/40 Wilson Avenue, Woombye
Corner of Blackall Street and Nambour Connection Road

OPEN HOURS: Mon-Fri 8:30am – 5pm www.elitefootcare.com.au

Thanks for your support

Winston Johnston
Division 5 Councillor
Division5@sunshinecoast.qld.gov.au



THANK you to the community of Division 5 for re-electing me as your Council representative for another term. I'm appreciative of the campaign support that I had from family, friends, mentors and volunteers.

During the campaign it was great to meet residents from right across Division 5 and hear about what is important to you and why you love living where we do. I look forward to tackling and solving the challenges of our region over the next four years and am proud to continue to represent and work on projects that are important to Division 5 residents.

New art trail

Montville has a new, public art trail for you to discover. 'Monts' are seven sculptures by local artist Finn Cossar. They were installed around the hinterland town in April, as part of the ongoing Montville Streetscape Beautification Group's levy program, managed by Council's Placemaking team. Council will also be installing signage to accompany the project. This is the first of four projects overseen by the Beautification Group and Council to enhance the town's appeal.

Sun smart park

It's great to see that the much sought after shade sail located at Tesch Park, Maleny has been completed. Along with the shade sail and galvanised posting, the project included new turf and tree trimming to make the space user-friendly.

Roadworks

The rainy start to the year has taken its toll on our hinterland roads and Council will be undertaking resealing work on Nicklin Way, Palmwoods and Shekinah Court, West Woombie this May-rain permitting.

If you have a pothole to report please contact Council direct and lodge a service request via www.sunshinecoast.qld.gov.au, 5475 7272 or the Sunshine Coast Council app.

Dog jumping comp marks 30 years at Maleny Show

THIS year marks the 30th anniversary of the Dog Jumping competition at the Maleny Show, and the original event organiser Matthew Howard, is using it as the opportunity to hand over the reins of the much loved attraction to its official sponsor, Rohan Williams of Total Building and Construction.

"The original idea was brought to me in 1993 by Debbie Haddock, who had a newspaper clipping from the *Dalby Herald*, about a dog jumping competition," Matthew said.

"So in 1994 we started the first dog jumping competition at the Maleny Show, and it has just grown so much over the years.

"The number of entries has grown and the prize money has increased too," said Matthew.

"Visitors to the Show absolutely love it. It has become a very popular attraction."

All kinds of dog breeds have been represented in the competition over the years, but Matthew particularly remembers the record breaking Koolie dog from Gatton, who holds the height record to this day.

"I have never seen anything like it," he said.

"This dog basically jumped 9 feet, 11 inches (just over 3 metres), from a standing start. In



Dog Jumping competition organiser Matthew Howard, second from left, with some of the contestants. Pic: Märshâ Fötögräfië

fact, we had to rig up a whole new jump for the competition. I ended up stacking the dog jump onto milk crates and strapping it to the back of a truck to make the jump high enough!"

This year, Debbie Haddock will return to the Maleny Show to run the final competition

with Matthew and to officially hand it over to Rohan.

"Rohan actually built a much taller jump for the dogs a few years ago and I know that it will go from strength to strength under his guidance."

Red backed wrens a rare sight these days

Nature Watch by Don McGlusky

WHEN we came here 30 years ago Red Backed and Variegated Wrens were very common. Over time their habitat has been lost to housing estates and hobby farms so they are a rare sight these days.

Only the male has the red saddle over its back during the breeding season.

Their distribution is mainly throughout tropical and sub-tropical grasslands. The

breeding season is from about August to January. The nest is a grass ball usually at the base of a clump of grass. Usually, three or four white eggs with spots at one end form a clutch.

Out of the breeding season these birds are seen in small groups.

An interesting factor is that the chicks excrete a dung sack which a parent bird will carry away from the nest thus keeping it clean.



A female Red Backed Wren removes a dung sack from nest.



FREE TALKS
BY HISTORIANS
INCLUDES MORNING TEA

Know where you live!

Join us as our Historians in Residence, **Dr Lisa Murray** and **Dr Ken Greenwood** present fascinating insights into Sunshine Coast's stonemasons and Bankfoot House's pioneering history.

BOOKINGS ESSENTIAL
Both historians will present at both locations.

Thursday 23 May 2024
9.30-11.30am
Heritage Library, Nambour

Friday 24 May 2024
9.30-11.30am
Bankfoot House,
Glass House Mountains

ARTS AND HERITAGE LEVY FUNDED



For more information and to book:
Scan QR code or go to 'What's On' at heritage.sunshinecoast.qld.gov.au or phone 5420 8600.



heritage.sunshinecoast.qld.gov.au

Lisa Rowe and Reed House Caretaker Christine Roach inspect the Reed House 15th Birthday Daisy wall.

Reed House marks 15 years of service

WISHLIST staff, volunteers, donors, Rotary Clubs and community members gathered at Reed House last week to celebrate 15 years of compassionate support for over 22,150 guests.

Reed House is available to patients, families and caters to those who need to stay close to a Sunshine Coast hospital while undergoing treatment, surgery or emergency stays.

Wishlist's hard-working and passionate volunteers at Reed House make it a 'home away from home' for our guests.

Formerly known as Reed Charity House, the 20-room facility was built in 2009 as an emergency medical accommodation service for patients of Nambour Hospital and their families.

This has since expanded to support patients, families and carers who need to stay close to all Sunshine Coast hospitals.

Built by generous contractors and local construction company, RCQ, the impressive facility is the result of collaboration between The Reed Charity Foundation, Wishlist, the Australian Red Cross, local Rotary Clubs and the wider community.

In 2012, after three years of fundraising, the



Doug Biggs Memorial Sky Bridge connected Reed House directly to Nambour Hospital to significantly improve access for patients.

In 2018, Wishlist resumed management to continue to enhance patient care across the Sunshine Coast, Gympie and the wider community.

After 15 years, Wishlist is excited to announce that Reed House will receive up to \$100,000 of the profits of projects like the Wishlist House Gympie for a well-deserved renovation.

Yandina Country Music

YANDINA welcomes guest artist Darrell Pearce to the ACMA concert on Sunday 19th May. With songs that you know and love, and his on-stage energy, you can guarantee entertainment!

You'll also enjoy popular country music and other upbeat, crowd-pleasing favourites from local artists backed by a great house band. See you at the Hall of Fame, 24 Steggalls Road, 12 noon start. Raffle and door prizes, byo lunch, free tea and coffee. Entry \$10, members \$8. Enquiries 0437 191004.

Mapleton Country Market

THE Mapleton Country Market is on from 8am-12pm on Saturday May 25 at the Mapleton State School, Mapleton. Enjoy delicious food, organic sourdough, bunya nut pesto, fresh produce, jams and chutneys, honey, handmade toys, leather, clothing, arts and crafts made with love and so much more. Enjoy live music while sipping on a barista made coffee. Our local Blackall Range Lions Club will be cooking up a storm with bacon and egg rolls and sausage sizzle.



Woombye's celebration of community spirit:

Happy Days rocks!

Q&A with WCBA president Milo Frawley

FROM meticulous planning to heart-warming highlights, Woombye Community & Business Association President Milo Frawley reflects on the triumph of this year's Happy Days Festival. Mr Frawley urges the community to mark their calendars for next year's Festival.

How would you describe the overall success of this year's Festival and how does it bode for future events?

There is no doubt we 'pulled it off' and this day was a success. But our measurement of success is based more in smiling faces and less in size of crowd or dollars and cents. Our committee, with the support of the community, are full steam ahead for next year and many years to come. We want to build this day so that it becomes the jewel in the crown of Woombye's calendar.

Can you provide insights into the attendance numbers and community engagement throughout the festival?

Unfortunately, we do not have an official count. Crowds come and go and there was no admission fee for daytime activities. A wild guess might be 800-1000 for the entire day? Many activities were popular. Our face-painter worked without break for five solid hours and never had less than five kids in the queue. The petting zoo were at their max-capacity for their four allocated hours. The dance floor was well used with a steady stream of dancers. The community seemed to embrace the day and smiles and laughter were plenty.

What were some key takeaways or lessons learned from organising the festival this year that could be applied to future events?

A long lead-in time is essential for organizing such a festival. We started working on the festival late October. Back then it was mostly permit applications, contacting vendors, and seeking sponsorship and grants. By early 2024, we were contacting specific vendors, working on market stalls and classic car entries, and liaising with local businesses. In the final 8 weeks we were busy with social media ads, volunteer recruitment, and purchasing equipment and supplies. The final lead-up days saw us scrambling to address some last minute cancellations, coordinating arrival and departure times of vendors, as well as the finesse of finishing touches.

From your perspective, what was the standout aspect or highlight of this year's festival?

There were many standouts. The live music,

Images by Ray Cash: raycashphotography.com



the pop-up bar, the primary school art competition to name a few. But I was most impressed with the success of the Kids Zone. Through generous donation we were able to supply all activities for a gold coin donation or free. The Kids Zone was jammin' all day and the laughter and smiles were heartwarming. Beyond that, I was delighted with the enthusiasm of our 28 local sponsors and particularly the vision of Bendigo Bank Woombye.

What message would you like to convey to the volunteers and sponsors?

Volunteers were core to our wonderful outcome and I want them to know how important their efforts were to producing the successful festival that we did. Likewise, sponsorship is essential to create a festival from scratch.

Sponsors gave to the community from their hearts knowing they would not see a dollar for dollar return on their donation. They just wanted the town to have its day of glory and pride. Please support our local businesses because our local businesses support us!

What else would you like to say?

Thank you Woombye! We will be back on the 4th of May 2025 and doing it all again. I believe next year will be bigger and better and I encourage everyone to mark their calendars now! Participants from this year (vendors or the general public) are encouraged to email the WCBA to offer suggestions or share ideas on what we can do better or maybe even avoid in 2025.

• Email woombyecommunity@gmail.com.



N

THE NEWSTEAD FUND

EQUITY CAPITAL FUND
Investment Summary

Looking for the peace of mind of monthly returns?

The Newstead Fund team can help you to strategically diversify your portfolio using a time-tested investment concept of Real Estate, Equity Allocations and Asset Laddering, which offers a comprehensive investment method that leverages the tangible value inherent in real estate.

To find out more, go to www.thenewsteadfund.com.au

Competent, professional and effective delivering an excellent result.

We bought the property through Monica in 2017. We were impressed with Monica's approach and her effective liaison with the sellers to agree a final price.

For our recent sale, Monica's appraisal turned out to be realistic and resulted in an early offer. Monica managed a complex issue which was identified during the building inspection and which may well have caused the buyers to withdraw. Very competently, Monica stayed on top of the detail and dealt with issues effectively and

expeditiously and kept us informed at all times. Monica proved herself to be a true professional by considering the buyer's interests as well as ours, as the sellers.

Buying and selling property can be challenging but Monica was always prepared to go the extra mile to resolve issues and minimise the stress that the process can cause.

Highly recommended.

Review submitted by P Dallimore (Vendor) - 68 Mapleton Forest Road, Mapleton - 11 April 2024

ROGER LOUGHNAN REAL ESTATE

VERIFIED BY RATEMYAGENT

☎ **07 5478 5288** "People who Care" **OPEN 7 DAYS**

📍 Shop 2, Cnr. Obi Obi & Post Office Road, Mapleton

🌐 rogerloughnanrealestate.com.au

If you are looking to sell your property and want results CALL Roger Loughnan Real Estate

Local Heroes grants

from Andrew Powell

State Member for Glass House
glass.house@parliament.qld.gov.au



Congratulations to the first winners of my Local Heroes Grants for 2024.

I usually only choose four winners per round but, this time around, I simply couldn't narrow it down and there are four winners from within the *Gazette* readership area alone.

The readership area winners are:

- Maleny State High School – to assist with producing their yearbook;
- Maleny Country Fair;
- Sacred Heart Church Maleny – supporting the costs associated with hosting a 100th anniversary celebration; and
- Maleny Netball Association – assistance for some players registration fees.

Funding for round two closes Friday 24 May.

Landsborough-Maleny Road landslip repairs begin

TMR have begun landslip repair works on a section of Landsborough–Maleny Road, Bald Knob.

The works located near the Hovard Road intersection will take approximately six weeks, weather and site conditions permitting.

The majority of works will be undertaken Monday to Friday between 6.30am and 6.30pm, however some weekend and night works may be carried out as required.

One lane of Landsborough–Maleny Road near Hovard Road will be closed and under traffic control during work hours.

There will be no impact to Hovard Road.

We're about helping volunteers to help us

Queenslanders rely on the efforts of volunteers, but participation numbers have fallen.

That's why if elected in October, we will order a Parliamentary Inquiry into Breaking Down Barriers to Volunteering.

Volunteers do vital work and under the LNP they will be supported.

The inquiry will focus on restrictions on volunteering caused by legislation and regulation, current government support for the sector and opportunities for improvement, barriers to volunteering for non-volunteers, current restrictions adversely limiting active volunteers and diversification in the volunteer workforce.

Festival thrives amid economic challenges

by Tanya Outridge

AT a time when other festivals are shutting down, the Hinterland's Rangebow Festival, now in its third year, is going strong with an exciting lineup of events and attractions planned for early August.

"We are that festival that is going ahead, thanks to the generous support of Sunshine Coast Council, Visit Sunshine Coast and our amazing business sponsors," said Festival Director Wayne Parcell.

According to Mr Parcell, being well attuned to the community and festival-goers has contributed to its success.

"We have made a point of listening closely to find out what resonates with people, and I think this has been the imperative," he said.

"We are a small, close-knit team, which means we can be quite nimble and this allows us to control costs and pricing in response to what is going on out in the community. We are well aware that many people are feeling an



economic pinch at the moment.

"To that end, this year's festival will feature a range of free attractions, including the Enchanted Garden, which offers three days of live music, entertainment, quirky performances and so much more. Everyone can find some joy in the festival, especially in these tough times.

"We are so grateful to have incredible sponsors like Montville Gourmet Bistro, who is picking up the tab for performers such as Frank and Louis, Shanleigh Rose, and Andy V, Sophie Delightful's circus performances and the Curbside Carnies," Mr Parcell said.

"Although we obviously need to be finan-

cially viable, I can confidently say that we are driven predominantly by purpose. This generates a wonderful synchronicity within our team, and between our sponsors and community. I think this is also the reason our sponsors have stuck with us. This festival is something that benefits and supports so many people, in so many ways."

To see the full program of events offering experiences for all, go to www.therangebow-festival.org.

• Until 31 May only, use the discount code 15 FRIENDS to get 15% off tickets and experience Music, Nature, Taste, Arts, Theatre, Film & Culture at the Festival.

Montville Markets a monthly oasis of local produce and handcrafted wares

EVERY second Saturday morning, the Montville Village Hall transforms into a vibrant community hub, brimming with locally grown produce and artisanal crafts.

Adorned with hand-sewn bunting and flower-filled tables, the market offers a feast for the senses, including delicious pancakes lovingly prepared by volunteers.

Between 25 and 30 dedicated volunteers work tirelessly each month to ensure the success of the Montville Growers and Makers Market. Proceeds from the market contribute to the preservation of the historic village hall, preserving its role as a focal point for community life.

The market fosters a warm and welcoming atmosphere, where neighbours come together to forge new connections and share in the spirit of community. The dedication of volunteers is celebrated, with gratitude extended to



Community spirit: Montville Markets volunteers enjoy the camaraderie.

all who contribute their time and goodwill.

If you're inspired to join the volunteer team, applications can be submitted to Volunteer Coordinator Ally Rexa.

• The next market is on Saturday, May 25, from 7.30am to midday.

Library helps shine during National Volunteer Week

Woombye Community Library News

by Cathy Cash

WITH National Volunteer Week approaching on May 20-26 I'd like to share brief stories of three of our valued volunteers at Woombye Community Library.

Susan Scott has volunteered since 2018 and fits her weekend shift in around her full time



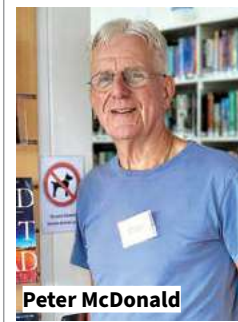
Helen Turner

role as a manager in a state government department. Susan, who has called the hinterland home for 13 years, loves that our library is a safe and comfortable space that brings people together. She takes inspiration from her parents who have been long term hospital volunteers both in Brisbane and on the Sunshine Coast.



Susan Scott

Peter McDonald from Palmwoods has a solid volunteering history, coaching junior soccer for around 15 years while his kids were growing up. A former sales manager, Peter likes to be busy and has become a more avid reader since his retirement leaning toward crime fiction as his favourite genre. He joined the library as a volunteer last year and enjoys his sessions at the library meeting our borrowers and having a chat.



Peter McDonald

Helen Turner is one of our long term volunteers and after ten or so years feels she knows the library inside out. She acted in the role of Convenor for several years and is also the facilitator of our library's Book Chat group which meets at 10am on the second Wednesday of each month at Kimnat Café. It's a friendly informal group chat about books with no set reading. Apart from her library activities Helen has a busy life combining roles including the School of Arts hall bookings officer, bus driver for her Nambour retirement village and Social committee member.

Thanks to all our 28 volunteers who provide a friendly and welcoming library service in Woombye for our many hinterland readers and have a happy National Volunteer Week!

Look Local Classifieds

HATHA YOGA/PILATES RELAXATION

Hatha Yoga Pilates is held at the Woombye Hall: Sat 9am & Wed 9.30am. Beginners & Seniors welcome. Cost \$10. Call Christine: 5441 6285 (Cert. in Pilates matwork; Dip. IYTA: Yoga Instructor; USC Sport & Exercise minor: Ex. Prescrip. for Health & Rehab.)

SHOP FOR LEASE MALENY

A rare opportunity exists to secure the tenancy for this well-appointed space. Suitable for office, retail or beauty services.

Centre of town location, about 36m2, air-conditioned, kitchenette and storage space.

Beautiful bi-fold doors lead onto the deck looking over the Main Street. Off street parking at the rear, disabled lift access and disabled toilet.

P.O.A

Phone 0475 916 286 or email admin@malenycc.org for more information

Warm up to better health

Wellbeing with Linda Goggan, Sacred Body, Montville



HEAT therapy has been used in many cultures for hundreds of years. From the Russian banyans to Japanese onsens to the Finnish saunas and Turkish hammams, heat has been a

part of healing rituals that are still very much alive and well today.

Just one of the more modern types of heat therapy is the Far Infrared Sauna (FIR) which generates heat through light. The term 'far' indicates the region of the light spectrum where

infrared radiation resides. In a traditional sauna, heat from the steam warms the air, which raises body temperature. Both are safe and effective types of heat therapy.

What does Far Infrared Sauna do for your body?

There have been multiple studies that indicate that regular FIR treatments can support the

- following:
- Sore muscles and joint pain from arthritis
 - Improved circulation
 - Chronic fatigue syndrome
 - Relaxation and improved sleep
 - Weight loss and detoxification
 - Clearing skin

Is it better than a traditional steam sauna? In short, they offer different support. The heat from FIR sauna penetrates the body deeper which is why it offers support for the conditions previously mentioned, whereas steam saunas

are a therapeutic option for respiratory conditions and sinus problems.

Each type of heat therapy has its place in



healing.

However, many people are being drawn to FIR sauna as they are more of an all-rounder type therapy and those that can often feel somewhat claustrophobic find that the dry heat from a FIR sauna allows them to enjoy the treatment benefits without feeling overwhelmed by steam.

A far infrared sauna session is an ideal add on to any body work treatment such as a massage. Having a sauna session prior to your massage preps the body well by getting the superficial muscles warm and supple to allow for a greater outcome for attending to deeper muscles in the body during a massage.

• To book your far infrared sauna session please contact Linda at sacredbody.com.au.



Rachel Ward.

Rachel's Farm doco inspires regenerative farming movement

Hinterland Homesteading by Racheal Pascoe

WHEN I say Rachel... I mean Rachel Ward, the Actress and Director! She was here on the Sunshine Coast recently at a special community screening of her film/doco on Regen Farming. So what is it all about, this different approach to farming?

Rachel and her husband Bryan Brown (also an Actor) run a cattle property in NSW and had been running the property by the old methods for 30 years, using lots of chemicals as band-aid solutions to problems and using the land to graze cattle with old systems and approaches.

After the Summer fires in 2019/20, Rachel became very interested in the land, managing it, learning more about different practices, wanting to be better and improve what happened at their farm. And so begins the journey and the documentary. I don't want to give it all away because I would love you to watch it for yourself, so I won't tell you all but it was a jolt for me, I too want to do more, be better, give the grocery stores the slip when I can regarding buying foods and look after our earth.

Don't worry if you don't have a huge farm, you can still make a difference. I live on 3 acres and enjoy having animals etc, but what else

Racheal Pascoe, right, with Rachel Ward.



can I be doing to help the land, animals and our future? Rachel Ward talks about going out for tea and seeing the '100 day grain fed steak' on the menu.

What does that mean she asked the crowd on Saturday night... no one answered... she told us that it meant that the animals had stood in a feed lot for 100 days in their own poop with only grain to feed on.

I am an animal lover but I also know that they provide food for us, but I won't be able to enjoy a steak again if this is what is happening. Rachel encouraged us to always ask where the food is from? Ask at the restaurant before you order your meal, ask the butcher where they source their meat from etc.

We need to get smarter with what we spend our money on, vote with our dollar so to speak. Rachel told us that there is a real power in this, people power. Rachel also encouraged us to buy from other sources than the 2 big grocery stores by buying from farmers markets, roadside stalls and eat what is in season in our local area to reduce the transport kilometres on our food.

Farmers who are wanting to change to Regenerative Farming practices are nervous to do so as it is a risk and a break away from what they know and have always done. It costs money to make change and they all still have families to support etc as they are doing all of this. How can we support them as they make these changes? We need to send a clear message to the big grocery stores. They buy the produce at low price from the farmer and make us all pay a high price for it at the checkout. The consumer these days is becoming much more aware of the quality of their food as well.

There is an entire movement that we can support

We are happy to pay a good price if it is great in flavour, the animals have been well cared for or the fruit trees haven't been drenched in chemicals. There is an entire movement that we can support and you can get onboard with where you spend your dollars this week!

So why would we bother with all this change when it is so easy to stay the same? Well we are all invested in the future.

I look at my grandson and hope for a bright future for him. I look after our small acreage with my hubby, improving the soil, encouraging worms to do their work, getting excited when we have wins growing food and go back to the drawing board each time we have a fail. We are always learning and I invite you to check out the film Rachel's Farm to find out more for yourself.

Rachel Ward is delightful in the film, she is just the same as she was in the Thorn Birds, only wiser and with more life experience. She wants to share with you, what she has learned and I think it is definitely worth our time. Happy Regenerative Farming everyone!

20% off your next haircut when you rebook

salon
haarscharf

men's

modern cutting, perms and colouring, beard cutting/maintenance

ladies

modern cutting, blow dry/styling, various colouring techniques, perming and styling support

tuesday - friday : 9am - 6pm

saturday : 9am - 1pm

other times on request

122 Nambour Mapleton Road, Nambour

Nathan 0430 374 319 Hubert 0461 579 356



Your local community care provider since 1986

Expand your social circle, have some fun, be creative and make new connections at our Day Respite Centres.

Some of our activities include outings in the local area, entertainers, music, art & craft, theme days, armchair travel, games, trivia and so much more.

A delicious morning tea and lunch is provided.

We have Day Centre vacancies in all of our locations, Flaxton, Nambour, Gympie and Maleny (Mondays Only).

*We would welcome a gold coin donation for Day Centre trials, however, it is not essential.



Scan here to learn more about our Social Support Programs

Other RangeCare services include:

- In-Home Personal and Nursing Care
- Social Support and Day Respite
- Domestic Assistance
- Meal Delivery Services
- Technology Support Programs
- Wellness and Recreational Activities
- Home Maintenance & Modifications

Come and try our Social Day Centre for just a gold coin donation!*

Call us on 07 5445 7044 to learn more.

Preserving the past:

Home's journey from the 1890s to fitting restoration

This Old House:

Estelle's, 397 Western Avenue Montville.
By Doug and Cate Patterson

THIS old house at 397 Western Avenue is now the home of Stephen Mitchell and his two children, Hamish and Erin.

Stephen and his then wife, Marina, purchased the property from their neighbours and good friends, John and Estelle Pickwell in 2014 after Estelle had died and John's health began to deteriorate.

Their original intention was to restore the home as an investment property and they engaged local builder, Rod Nash to manage the restoration work.

Working from a photograph of the original 1895/6 home and his experience of earlier restoration work, Rod was able to recreate the historic frontage of the house and sensitively restore its interior to create a very liveable home while preserving its heritage quality.

They named it Estelle's in honour of Estelle Pickwell who had treasured it for over 40 years.

Edward (Bill) and Caroline Vining built the house in 1895/6 after selecting Portion 143V, 86 acres at the end of Butt's Road as Western Avenue was then called. They built it with pit-sawn timber felled on the property and milled by the older Vining sons.

The main bearers under the house still display the saw marks left by the pit-sawn process. Appropriately,

they named the selection Land's End as it was the last arable block at the end of the road and the escarpment drop into the Narrows Gorge was a reminder of the English Land's End.

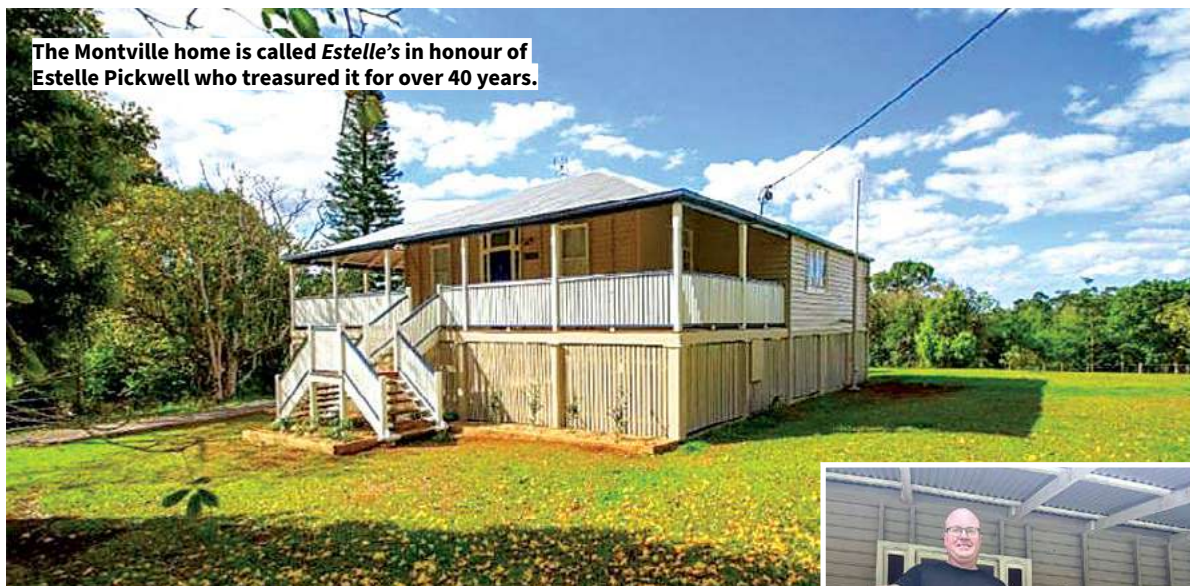
As part of the requirements of selection to make improvements Bill cleared the land, built a home and fenced a home paddock. Clearing the land enabled the family to harvest timber on and over the escarpments while they established crops of strawberries, bananas, corn and green feed.

Built from pit sawn timber the house was a substantial 24ft by 20ft with a 7ft veranda all around and a detached 13ft square kitchen at the back. With all the selection requirements met, Bill was able to purchase the block in 1901.

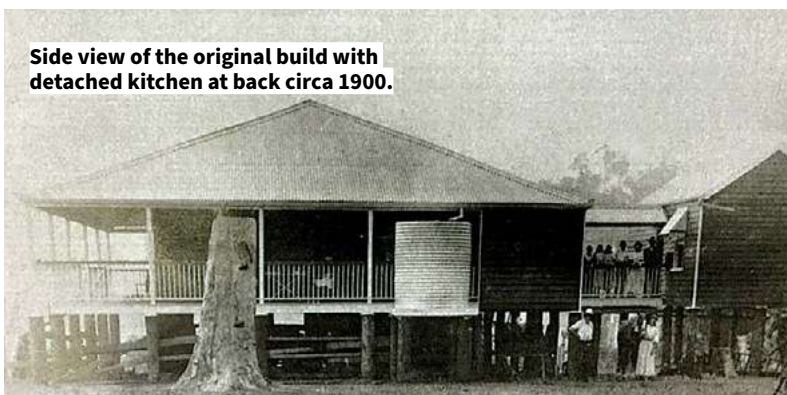
He extended his fruit plantings to include citrus, grapes and pineapples, became the first licenced, commercial winemaker in the region, producing wine from his grapes and oranges. A teetotaler himself, he established a small cellar under the front of the house to store the wine and encouraged those who visited to have a tippie.

The Vining family lived at Land's End for 32 years and were highly respected and active members of the Montville Community. Land's End was sold to Mrs Alice Acton in 1927.

The property remained in the Acton family until the mid-1940s. While running Land's End they also owned another farm along the Western Road.



The Montville home is called Estelle's in honour of Estelle Pickwell who treasured it for over 40 years.



Side view of the original build with detached kitchen at back circa 1900.



Owner Stephen Mitchell has restored the house respectfully, honouring its 128 year history.

The next identifiable owners are Lawrence and Mary Regan who owned the property from the late-1950s to the mid-1960s. They had six children with the older ones making the daily 5 km hour long trek to Montville State School and back home at the end of the day just in time for the farm chores.

Tony and Ethel Francis owned the property from the mid-60s 'til 1972, renaming it, or perhaps mis-naming it, Wallsend. A niece recalls visiting her ex-RAAF uncle and being impressed by his pianola and how he quieted the dogs by firing a shotgun

out the window. They sold to John and Estelle Pickwell and moved to Palmwoods.

John and Estelle Pickwell bought the property as a mountain retreat and family holiday home and spent the next 40 years planting avocados and pine tree groves, running cattle, slashing what had been reduced to 34 acres and enjoying time away from the bustle of Brisbane suburbia. Easter became the time for extended family get togethers.

Builder Rod Nash opened up the front and the front half of the side verandas, restored the original dual

front steps and built a back deck. Inside, vinyl and carpet were lifted and the wooden floors polished and the tongue and groove walls restored.

The lounge and library nook were opened up to admit more natural light while dining now had inside and outside (on the deck) options, with views over Stephen's fruit and vegetable garden. Stephen has plans to extend the garden and, in the long term, build a shed to the east of the house to include guest accommodation in keeping with its colonial architecture.

Spacious home on small acreage, Wootha

AGENT'S CHOICE:

5 Scotts Road, Wootha. \$1,360,000

TUCKED away in a quiet road, this custom-built Dixon Home is situated up high on a gently sloping 5.3 acres with dams and ample sheds. The solid home features a spacious, open plan layout and the interior flows well to the oversized, north facing covered deck that has wonderful views over the two dams and through to the neighbouring ranges.

The home has four bedrooms and two bathrooms plus a study/nursery. The central kitchen overlooks the spacious, light filled living area, and there are high ceilings throughout.

The double lock-up garage has internal



access to the house, and the property has approximately 70,000L of rainwater storage, and a 5KW solar system and solar hot water.

An 18m x 12m machinery shed, and 6m x 6m shed and 6m x 9m sheds provide loads of storage. With its location just 10 minutes from Maleny, you're sure to be impressed with this acreage gem.

• Call exclusive agents Rodney Millett on 0477 702 073 and Jess Luthje on 0438 616 064 to book your inspection today.

Let your morning coffee make a difference

NAMBOUR charity, the Everyday Foundation, formerly known as Suncoast Care, has partnered with Sunshine Coast coffee roastery Kai Coffee to raise funds to provide winter warmth to the most vulnerable in our community.

All profits from specially marked Kai coffee beans go towards the 'Beans for Beanies' cause.

The foundation is putting together winter packs including a beanie, gloves, warm socks and other warm clothes for those doing it tough in our community.

Operations Manager of the Everyday Foundation, Karen Gullo, is passionate about the cause and the difference the campaign will make to those sleeping rough as the temperature begins to drop.

"We hope the community will get behind the cause by purchasing the beans so that we can put together enough winter packs to meet the demand," said Karen.

"We have seen an increase of requests for warm clothes at the *Daily Bread*, our meal support kitchen.

"Last week we provided some packs to a single mother who asked if we had any warm clothes for her four kids who were all under six."

Daily Bread offers free meals twice a week to those that need, bringing community and connection as well as a nutritious meal.

"Our team of volunteers are doing their best to meet the requests for winter clothes, we even had a volunteer take off their own shoes when they saw a patron didn't have a pair."



A Suncoast Christian College student assembles one of the packs last year.

The annual initiative aims to bring awareness to the needs of the most vulnerable on the Sunshine Coast.

Partnering with Suncoast Christian College, the "winter warmies" packs are assembled by primary school students to be distributed in the winter months.

"We're only a quarter of the way into our fundraising goal so we are hoping to see an uptake in sales so that we make as many winter packs as possible."

It's easy to get involved, community members can support the cause by purchasing their beans on the Everyday Foundation's website.

Beans can be delivered or be picked up at the *Bean Café* in Woombye – the organisation's social enterprise café where all profits go towards funding the Everyday Foundation's programs. You learn more about the foundation via their website or visiting the Bean café.



4 X FREE ROYAL CANIN WET POUCHES

*SELECTED VARIETIES, WHILE STOCKS LAST.



WITH EVERY ROYAL CANIN DRY CAT FOOD PURCHASED



NAMBOOUR
PRODUCE AGENCY

60 NATIONAL PARK ROAD, NAMBOUR
P 07 5441 5955

MALENY & HINTERLAND REAL ESTATE

SALES | PROPERTY MANAGEMENT | COMMERCIAL



WELCOME TO THE MARKET

105 - 109 Balmoral Road **MONTVILLE**

3 3 7

This is one impressive property; a timeless, contemporary home offering spectacular views to the coast, the Hinterland and over the impressive gardens. Tucked away privately from the street and neighbouring properties, yet only 5 minutes' drive to Montville village. Old growth rainforest trees and grassed lawn areas create a lush hideaway in your very own piece of paradise. Enjoy coastal views from the established outdoor party area and covered cooking/dining zone with power and water connected. The views from this property are truly stunning and must be seen to be appreciated.



- Soaring ceilings and timber floors throughout the living area
- Gourmet kitchen opening to the deck with views forever
- Wood fire and air conditioning
- Double lock-up garage attached
- Separate multi-purpose area with bathroom attached to the workshop

FOR SALE
Price by Negotiation
INSPECT
By Appointment
Jess Luthje
0438 616 064
jess@malenyrealestate.com



WELCOME TO THE MARKET

87 Maleny Kenilworth Road **MALENY**

4 1 4

Dreams of a sustainable lifestyle on 2 acres, just 5 minutes outside of Maleny, can be a reality at this very private property.

- Absolutely useable 2 acres of land
- Timber floors throughout
- Open plan living with fireplace
- Large kitchen with dining and fireplace
- Only 5 mins to Maleny

Acreage properties of this size and opportunity do not come along often and now is the time to start living your dream.

FOR SALE
Contact Agent
INSPECT
By Appointment and
Open Homes
Rodney Millett
0477 702 073
rodney@malenyrealestate.com



24 Wongabel Street **MALENY**

5 3 2

Perfectly positioned to make the most of the Hinterland and all it has to offer; this very stylish home delivers fantastic proportions, light-filled rooms and endless style. Large windows offer a beautiful, leafy outlook and captures wonderful light.

- 5 bedrooms over 2 levels with the potential for dual living
- Master with en suite and the main bathroom with a shower and spa
- Stylish open plan living, dining and kitchen area
- Dual living potential or welcoming guest space
- High ceilings and wood-burning fireplace

A low maintenance, established garden completes the picture here for a wonderful lifestyle.

FOR SALE
Offers Over \$1,200,000
INSPECT
By Appointment and
Open Homes
Rodney Millett
0477 702 073
rodney@malenyrealestate.com



49 Mary Cairncross Avenue **MALENY**

3 2 2

On a user-friendly 4451m² block bordering Mary Cairncross Rainforest Reserve, on the sought-after East side of Maleny township, this appealing home has much to offer.

- Bespoke Rammed Earth and hardwood home
- Separate, self-contained studio with 6m x 6m carport adjacent to the home
- A bore plus tanks for the established gardens and fruit trees
- Rainforest grove with seasonal creek
- Stunning Northern courtyard-landscaped with water feature and fish pond

The large courtyard to the Northeast takes in the impressive but low maintenance gardens. Tucked away down a tree-lined driveway you'll be impressed by the many features.

FOR SALE
Price by Negotiation
INSPECT
By Appointment
Jess Luthje
0438 616 064
jess@malenyrealestate.com



309 Witta Road **WITTA**

3 2 1

Situated in ever-popular Witta, this Western Red Cedar home offers the perfect home or retreat from the hustle and bustle of the coast or the city.

- Master with en suite
- Open plan kitchen, dining and living
- Loads of storage throughout the home
- Private undercover entertaining area
- Potential space for boat, trailer or caravan

The demand from astute buyers looking to purchase in Witta is ever growing and here is your opportunity to enter the market with this very solid home.

FOR SALE
Inviting Offers
INSPECT
By Appointment
Rodney Millett
0477 702 073
rodney@malenyrealestate.com

5494 3022

malenyrealestate.com

Maleny & Hinterland Real Estate

malenyandhinterlandrealestate

PROUDLY A FAMILY OWNED AND OPERATED AGENCY IN THE HEART OF MALENY

Live Local

Real Estate & Hinterland Living

Your dream home could be just around the corner. We bring you the latest news & Agent's Choice listings.

Brand new colonial style home in Nambour

AGENT'S CHOICE: 2/4 Doolan Street, Nambour. Offers over \$829,000.

THIS brand new, highset home has been tastefully built colonial-style with great character and warmth. It features excellence in design and functionality and the quality of construction is evident throughout.

The home has 4-metre high ceilings and oversized 2340mm door heights, water-proof vinyl plank flooring in the living area, and carpets in the bedrooms.

The light filled Hamptons kitchen features a butler's pantry, shaker style cabinetry and quality appliances, the open plan living and dining areas flow out to the north facing patio, and the decor throughout is tasteful and elegant.

There are four bedrooms, three bathrooms (two ensuites) plus a powder room/laundry combo, a multipurpose /office space, and a double lock up garage (tandem), on a fully fenced, elevated 450m2 block.

The design has also taken into account the increasing number of people that work from home, with a dedicated office/salon space with a sink on the lower level with its own separate



This brand new home has been tastefully built with character, warmth and lashings of appeal.

external access. This space could also be suitable as a second living area/gym/hobby room.

Other features of note include two split system air-conditioners, external access to a private deck from two of the bedrooms, a sensor light at the front of the property, generous storage, and 2.5kW solar power.

There is a cosy firepit area at the front, and being elevated, the home also showcases a delightful leafy outlook to the north-east across town. The property is fully fenced.

Being brand new, there is nothing to be spent, on this extremely low maintenance property.

Contact selling agents Tristan Brown on 0403 665 643 & Chris Elliman on 0408 154 947 to arrange your inspection.

What will the next two years bring for Coast house prices?

Real Estate Column with RE/MAX Property Sales Principal Tristan Brown



IN what has become almost a daily conversation in local coffee shops and around the water cooler within the confines of real estate agencies, the question of "will house prices drop or continue to rise in the next two years?", is a constant.

This is never a question that can be covered with a black and white answer.

Let's look closer at Nambour for example and what could contribute to the market movement over the next 2 years:

• **Population Growth:** If Nambour is experiencing population growth due to factors such as migration from other areas, natural population increase, or urbanization trends, there could be increased demand for housing. With limited housing supply, prices tend to rise.

• **Economic Development:** Economic growth and development in Nambour, such as new job opportunities, business investment, or infrastructure projects, can stimulate housing demand.

As the local economy thrives, more people may be attracted to live in the area, further driving up housing prices.

• **Desirability and Lifestyle:** Nambour's lifestyle factors, such as its proximity to amenities, natural attractions, schools, and

healthcare facilities, make it an attractive place to live. This desirability can increase demand for housing and support price growth.

• **Investor Interest:** If Nambour is seen as a promising real estate market by investors, they may purchase properties for rental income or capital appreciation.

Investor activity can contribute to increased competition for housing and put upward pressure on prices.

• **Government Policies:** Government policies that support homeownership, such as incentives for first-time homebuyers or infrastructure investment in the area, can stimulate housing demand and influence price trends.

• **Limited Land Supply:** If there are constraints on land availability or zoning regulations that limit new construction in Nambour, the supply of housing may not keep pace with demand, leading to price appreciation.

Now, despite the above all playing an integral role in pricing growth it still doesn't look at more overarching contributing factors such as interest rates, population growth via immigration intake and supply constraints within the building industry.

Based on all of the above, it would be fair to assume that housing prices will continue to increase in the coming 1-2 years.

Locally, there doesn't appear to be any relief in sight and its scary to admit that housing affordability will only continue to become more difficult for many.

For Sale



104D Thrushs Rd, **DULONG**

1.236 Hectares

Dream Hinterland Acreage Ready to Build

- 3+ acres of premium land in sought-after Dulong Location
- Choice of sites to build your dream home
- Telephone and electricity provisions in place
- Fully fenced pastures for grazing
- Spring-fed creek plus a dam for water
- Perfect for horses, cattle, livestock, orchards or veges
- Enjoy peace, privacy and an enviable hinterland lifestyle
- Great opportunity for self sufficient off-grid living



Chris Elliman
0408 154 947

chris.elliman@remax.com.au



Scan for more info!



Indulge your culinary passions in the gourmet galley kitchen, featuring two-pack cabinetry and a huge stone benchtop island.

Family-sized luxury in Coolum Beach

AGENT'S CHOICE: 5 Mount Ninderry Court, Coolum Beach. Offers over \$1,550,000 considered.

EXPERIENCE the ultimate in coastal living with this stunning family retreat, nestled amidst tropical gardens and located within strolling distance of beaches, cafes, and parks.

This bright and modern home has been meticulously crafted for luxury, comfort, and effortless entertaining.

This impeccable brick and tile home is set across a generous fully fenced 747m2 flat block.

There are stylish plantation shutters throughout and four spacious bedrooms including a master suite with a walk-in robe. Recent upgrades include new ducted heating/air con, ensuring year-round comfort.

The gourmet galley kitchen features tasteful

two-pack cabinetry and a sprawling 3m x 1.4m stone benchtop island. Luxurious touches abound, from the Velux motorised skylights to the Electrolux appliances including oven combo microwave and induction cooktop.

Entertain with ease in the expansive lounge and dining areas, or step outside to the covered alfresco space.

The heated magnesium pool has a floating deck for relaxation with a modern twist. A substantial 3m x 6m shed provides ample storage for all your needs.

This private haven offers the perfect blend of convenience and coastal charm.

Don't miss your chance to experience the epitome of coastal living in this exceptional property.

• Call selling agent Garren Reisinger on 0476 950 007.



Price Guide: \$1,200,000+

9-49 Biggs Road, Dulong
3 🛏 2 🚿 2 🚗 14.7 Hectares

Scott Walters 0447 474 982



\$739,000

6 Benji Court, Nambour
3 🛏 1 🚿 2 🚗 745m²

Richard Krausz 0422 997 810



OFFERS ABOVE \$950,000

13 Mooloolah Meadows Dr, Mooloolah Valley
4 🛏 2 🚿 5 🚗 4333m²

Sean Carter 0405 975 975

Steven Creaney 0478 820 515



Offers Over \$899,000

6 Appleberry Place, Yandina
4 🛏 2 🚿 2 🚗 701m²

Scott Walters 0447 474 982

Linda Cloete 0497 097 808



OFFERS OVER \$779,000 CONSIDERED

183 Nambour-Mapleton Rd, Burnside
4 🛏 2 🚿 2 🚗 777m²

Garren Reisinger 0476 950 007



OFFERS OVER \$585,000

8/10 Imagination Drive, Nambour
2 🛏 2 🚿 1 🚗

Steven Clay 0438 510 583



Offers Over \$559,000 Considered

11/10 Imagination Dr, Nambour
2 🛏 2 🚿 1 🚗

Garren Reisinger 0476 950 007



Offers Over \$729,000

4 Conrad Court, Nambour
4 🛏 1 🚿 6 🚗 676m²

Garren Reisinger 0476 950 007

Trades & Services

Local people look local first. Cast a wide net with an advertisement and write-up in the Gazette. A massive 10,000 copies delivered every fortnight.

HOSE FITTING

SUNSHINE COAST HOSE & FITTINGS
MOBILE HOSE SERVICE



SERVICES INCLUDE

- 24/7 BREAKDOWN SERVICE
- PLANNED MAINTENANCE & SHUTDOWN WORK
- HYDRAULIC & INDUSTRIAL HOSE AND FITTINGS
- FLUID TRANSFER, STORAGE AND METERING
- PUMPS AND REELS
- HYDRAULICS
- PNEUMATICS
- LUBRICATION
- REFUELLING

0408 220 503 24/7 MOBILE SERVICE
sunshinecoasthoseandfittings.com.au schf@outlook.com.au
KUREELPA Sunshine Coast

BUILDER

local builder FOR ALL YOUR BUILDING NEEDS

Local Family Owned Building Company
30 Years Industry Experience

You deal directly with the owners and we ensure our customer's needs and expectations are met and exceeded on every project.

0448 866 907
www.ibuildqueensland.com.au
QBCC: 1304991 • Master Builders: 68500
IBUILD QUEENSLAND
SEEING THE FUTURE IN BUILDING

RUBBISH REMOVAL

2-GO Clear-Space !!

RUBBISH (ANYTHING) REMOVAL

Fridges, Beds, Mattresses, Lounges, including clutter

FREE QUOTES

Small Clutter or Full House Clearances
The Clear-Choice !!

CALL NOW 0477 772 138

ELECTRICIAN

ACW ELECTRICAL
Lc.No. 8020

SMALL JOB SPECIALIST
Over 30 years experience

Quality Workmanship on Domestic Installations & Repairs

mobile **0427 170235**

AUTO SERVICES

CARAVANS WE BUY, SELL AND CONSIGN

P: 0408 758 688

SEPTIC CLEANING

Sutton's CLEANING SERVICE

- SEPTIC SYSTEM
- TREATMENT PLANTS
- GREASE TRAPS
- HYDRO EXCAVATION
- LIQUID WASTE
- COMMERCIAL & DOMESTIC

Locally Owned & Operated Since 1980

PH 5447 6477
www.suttonscleaning.com.au

PLUMBER

WOOMBYE PLUMBING
30 Years Experience
RURAL PLUMBING SPECIALIST

- RAINWATER TANKS & INSTALLATION
- DRAINAGE
- MAINTENANCE
- EXCAVATOR HIRE

HAYDEN KITHER
0490 308 785
hayden@kitherplumbing.com
135 OLD PALMWOODS ROAD, WEST WOOMBYE

LANDSCAPING SERVICES

WOODCHIP / FOREST MULCH
\$25 per cubic metre + GST
(8 cubic metres minimum delivery)

54 459921 or 0412 586 131

We also provide complete tree services including pruning, removals & consultancy

ELECTRICIAN

lit Lit Electrical and Data Pty Ltd.
ECL LIC: 87381 ABN 30644470315

DOMESTIC | RURAL | COMMERCIAL | INDUSTRIAL | MAINTENANCE

Switchboard Upgrades | Underground Power | Renovations
Celling Fans | Appliance Repairs | Smoke Alarms | New Builds
NBN | CCTV | Phone and Data | Intercoms

0421 176 849
www.litelectrical.com.au | admin@litelectrical.com.au

TANK CLEANING

TANK LEAKING CLEAN REPAIR RENDER

OVER 35 YEARS SUNSHINE COAST EXPERIENCE

FREE QUOTES
PENSIONERS DISCOUNT
0475 249 367

CONCRETING

CREATIV CONCRETE CO.

Pathways | Driveways
Pool Surrounds | Patios
Shed Slabs | Plain Concrete
Exposed Aggregate

0408 696 286
E: creativconcreteco@outlook.com
QBCC - 15237470

FLOOR SANDING

CHOICE FLOOR SANDING

TIMBER FLOORS • STAIRS • DECKS
OWNER OPERATOR FOR 25 YEARS

CALL PAUL
0419 716 500

WATER SERVICES

HPS
Hinterland Pump Services
Glasshouse to Gympie
Murray
0416 256 536

WATER SERVICES

HW WS SEPTIC PUMP OUTS

Hinterland Waste Water Services

Peter
0428 723 082
hwws@bigpond.com

CONCRETING

CONCRETING & LANDSCAPING ALL AREAS

- Footpaths • Driveways • Slabs • Stencil
- Stamped • Concrete Saw Cutting
- Exposed Aggregate • Plain • Bobcat
- Excavator & Truck
- Quality work at affordable rates
- Free Quotes & Free Advice Anytime
- Credit Cards

Ph Guy 0416 202 044
www.concretecontrol.com.au
QBCC Lic no. 1129605

BLINDS AWNINGS

Servicing The Sunshine Coast For Over 30 Years

INDEPENDENT BLINDS & AWNINGS

0411 872 060

Ziptrak & Zipscreen • Blinds & Awnings
Clear PVC Blinds • Plantation Shutters
Security Doors & Screens

Call us today for a free measure and quote!
www.independentblindsandawnings.com.au
QBCC No. 1096933

AUTO & MECHANICAL

AUTOELECTRICS QLD
& Mechanical

- Air Conditioning
- Mechanical Repairs
- Auto Electrics
- Log Book Servicing

227 Nambour Connection Rd, Woombye
autoelectricssld.com.au
5442 2278

What's On

in the Hinterland

Local Events and Entertainment coming up. Preference given to local events of widespread interest. All care taken but please check details with organisers. Send details to editor@sunshinevalleygazette.com.au.



Mike Korsos: "There will be portraits with layers of emotions."

Photographer's exhibition at The Old Ambo

WELL-KNOWN local photographer Mike Korsos will present a solo exhibition at The Old Ambo in early June.

Mike describes the exhibition as a "photographic journey and exploration of various aspects of life, all things sweet and nice, also pointy and sharp".

"The exhibition will take the audience through delightful landscapes, nature and sceneries," Mike said. "From local streets to the streets of different cultures. There will be portraiture with fun and adventures, as well as portraits with layers of emotions. There will be some fantasy and fictional photographic plays with a diverse array of subject matter that aims to produce some answers and perhaps some questions."

• Opening night is June 1 at 5pm at The Old Ambulance Station, 80 Howard Street Nambour. Music by Soula. Cash bar and nibbles by Nambour Social. Entry is free. The exhibition is on until June 21. Facebook event page: <https://fb.me/e/593WtxdAB>

'Double bill' of premières

THEATRE fans looking for something new will have a real treat in May, when 3bCreative stage not one, but two plays. One of New Zealand's most popular plays, *Krishnan's Dairy*, will be having its first outing in the state. Joining it will be *Scraps*, the latest work of Nambour playwright Joy Hinckley.

Ever wondered what those Ibis are thinking about, what philosophical matters occupy their minds as they probe the muck? All is revealed in *Scraps*, as two Ibis in King George Square come to the realisation that history is often a bit one-sided. This short one-act play uses humour to tackle some of the gnarly aspects of how our region came to be as it is today, and the characters who played their roles in the founding of Queensland. Featuring a visit from an ancient Egyptian god, this play will ensure you never look at bin chickens in the same way again.

Following *Scraps* you will be treated to the exuberant and colourful *Krishnan's Dairy* by NZ playwrights Jacob Rajan and Justin Lewis. One of the most successful plays in New Zealand history, *Krishnan's Dairy* has toured the globe, justly earning rave reviews. The play centres on the travails of a migrant couple, Gobi and Zina Krishnan, who have emigrated from India to New Zealand to start a family and run a convenience store. Juggling the demands of running a small business in a strange country, and the ordinary stresses of married life leads to endless frustrations—some comic, some not so. Woven through is the story of Shah Jahan who built the Taj Mahal as a mausoleum for his favourite wife.

Both Gobi and Zina are played by Sangita Ghodke, giving her a great opportunity to demonstrate her remarkable comedic talents and also her lived experience of being an immigrant. 3BCreative's Anne Grant is delighted to be offering these two clever,



Joy Hinckley, left, and Deb Anstey play a couple of King George Square foragers in *Scraps*. Image: Greals.

amusing, and gently thought provoking plays in Nambour.

• This double bill starts on Friday May 31 for a limited season at the Black Box, at 80 Howard Street Nambour. Bookings are essential and may be made at www.trybooking.com/events/landing/1164047



Roy Gasson plays pilot Mario Landers in the show.

Feathered fun takes flight at Little Theatre

THE Palmwoods Singers Theatrical Society is proud to announce their latest production, 'The Royal Galah Performance', presented by the enchanting Little Village Theatre.

Set to captivate audiences on June 8, 9, and 16, from 2 to 4pm, the whimsical spectacle promises an afternoon filled with laughter, music and heartfelt storytelling.

Located at the Palmwoods Guide Hut on the corner of Lingara Avenue and Montville-Palmwoods Road, the stage is set for a delightful journey into the world of the Royal Galahs.

Don't miss your chance to witness the magic of 'The Royal Galah Performance' brought to life by the talented cast and crew of the Little Village Theatre. Book your tickets today and prepare to be transported to a world of feathered wonderment!

• Tickets are priced at \$30, inclusive of a delectable afternoon tea, offering a perfect blend of entertainment and refreshment. Booking is essential. Contact Moira on 0409 026 145 or via email at ourlittlevillagetheatre@gmail.com.



Breakfast Sunshine Coast

Wednesday to Sunday | 8:00am - 11:00am

Breakfast

Wednesday - Sunday
8:00am - 11:00am

Lunch

Wednesday - Sunday
11:00am - 2:00pm



Bollinger Luxury High Tea

Saturday
10:00am
Pre Order - Pre Pay

Flaxton Feast

Pre Order Your Flaxton Feast Event in the Sunshine Coast Hinterland



CALL NOW TO BOOK
07 5445 7450

313 Flaxton Drive, FLAXTON

flaxtongardens.com.au



SEE BLUEY & BINGO LIVE

SATURDAY 1ST JUNE • 4 LIVE SHOWS FROM 10AM

MALENY SHOW SOCIETY 2024

PURCHASE TICKETS ONLINE OR AT THE GATE

MALENY AGRICULTURAL SHOW

FRIDAY 31 MAY & SATURDAY 1 JUNE

MALENY SHOW

An action packed display of **FREESTYLE BMX** featuring some of Australia's top riders

3 SHOWS DAILY

MEET AND GREET AND POSTER SIGNING AFTER EACH SHOW

3 SKILLS CLINICS EACH DAY

BEGINNER | INTERMEDIATE | BIKE MAINTENANCE

2 DAYS

Main Ring Horse Events • Pavilion Exhibits
Dairy & Beef Cattle • Poultry • Trade Displays
Sideshow Alley • Showbags

Fireworks • Woodchop • Free Train Rides • Free Animal Nursery
Free Wildlife encounters • Roaming Entertainment
Live Music • Cattlemen's Bar till late ... and much, much more!

COUNTRY STARS SEARCH COMPETITION

HEATS ON FRIDAY | FINALS ON SATURDAY

PURCHASE YOUR TICKET ONLINE

Use your smart phone's camera to scan the QR CODE or visit our website

13 MALENY-STANLEY RIVER RD, MALENY | @ f BUY TICKETS NOW!

07 5229 7008 | www.malenyshowociety.org.au

What's On Day by Day in the Hinterland

Local Events and Entertainment coming up. Preference given to local events of widespread interest. All care taken but please check details with organisers. Send details to editor@sunshinevalleygazette.com.au.

- **Throughout May: GourMay – Mary Valley Food Festival.** Celebrating Mary Valley growers, producers, and creators.
- **May 16: The Jazz Sessions** at The Presynct, Nambour. Tickets via humanitix.com. Doors open at 6pm for a 7pm show.
- **May 16: Zonta Club of Blackall Range** hosts Candlelight Ceremony at Tesch Park, Maleny, 5pm, commemorating domestic violence victims.
- **May 17: Baldwin's Lawyers host Chamber drinks** at The Presynct, Nambour, 5pm. Free for members, \$5 non-members. Live music. Tickets on Chamber Facebook page.
- **May 17-19: Kenilworth ArtsFest at Kenilworth Hall and Showgrounds,** featuring a \$2000 prize for a Mary Valley food-themed 2D artwork.
- **May 17-19: The Sunshine Coast Tennis Veterans Tournament** hosted by Nambour, Palmwoods, Yandina and Woombye Tennis Clubs.
- **May 18: Festuri Multicultural Festival.** Join the Moffat Beach Surf and Sea Multicultural Festival at Eleanor Shipley Park, Moffat Beach. Book your free pass at [@festurimulticulturalfestival](https://www.facebook.com/festurimulticulturalfestival).
- **May 18: Landsborough School of Arts Memorial Hall 100th anniversary celebration,** 10am-2pm. Participate in the Landsborough Museums Street Festival.
- **Saturday, May 18: Local AFL. Beenleigh QFA Div 1 Seniors v Hinterland Blues QFA Div 1 Seniors** at 2pm, Guardian Gantry Hire Oval.
- **May 18: FQPL 3 Men's Football Round 10,** Beerwah Glasshouse Utd FC v Nambour Yandina Utd FC at 5pm, Beerwah Glasshouse-Field 1.

COMING UP:

May 31 and June 1: Maleny Show, Maleny Showgrounds.



- **May 18: FQPL 3 Men's Football Round 10,** Caloundra FC FQPL Men v Woombye Snakes FC at 6pm, Caloundra FC-Field 1.
- **May 18-26: Open Studios. Meet Sunshine Coast artisans.** Various locations.
- **May 18: Experience "The Wish Fulfilled"** at The Presynct starting at 6pm.
- **May 18-19: Melbourne Staff Band performs** at Nambour Salvation Army Hall, Suncoast Christian College Church, and Nambour Rummagers Market. Tickets at <https://www.trybooking.com/CPSJZ>.
- **May 18-26: Open Studios. Throughout the nine day event,** 18 - 26 May, 2024 the community can take self-guided tours to meet local artists in person, view artistry in action, purchase art, participate in workshops and gain a new appreciation for the creativity of local talent.
- **May 19: TULE event on end-of-life decisions** at Maleny Playhouse, 2pm-4pm. Cost \$10, includes afternoon tea. Tickets at www.trybooking.com/CQXRM or door. Info: Fleur, 0409 470 822.

- **May 19: Nambour Rummager's Market.** Explore treasures at the Nambour Rummager's Market at Nambour Forecourt from 9am to noon.
- **May 20-26: National Volunteers' Week.**
- **May 21: Biggest Morning Tea** at Club Yandina (Yandina Bowls Club) from 10am to noon. Everyone is welcome. Contact: yandinabowls-clubinc@bigpond.com 5446 7126.
- **May 24: Men's Rugby University versus Nambour,** 7pm, at SCU Sunshine Coast Uni Field 1.
- **May 24: The Remains Of Mr Thompson** at The Presynct starting at 7pm.
- **Saturday, May 25: Journey To Planet Bass Part 3** at The Presynct starting at 6pm.
- **May 25: Mapleton Country Market, 8am-12pm,** Mapleton State School. Food, produce, crafts, music.
- **May 25: Montville Growers and Makers Market,** Montville Village Hall, 7.30am-12pm. Local produce, crafts. Volunteer opportunities available.
- **May 25: Women's Rugby, 12.30pm, Wynnum v**

Nambour at Wynnum Rugby Union Club (Field 1).

- **May 25: GourMay – Mary Valley Food Festival Day.** Sat 25th May, 8.30am-3pm at Imbil Town Square & Rail Park. Celebrate Mary Valley producers.
- **May 25: FQPL 3 Men's Football Round 11,** Woombye Snakes FC v Kawana FC FQPL Men at 6pm, Woombye Snakes FC-Field 1.
- **May 25: Local AFL. Hinterland Blues QFA Div 1 Seniors v University of Queensland QFA Div 1 Seniors** at 2pm, G Rae Oval, Palmwoods.
- **May 25: FQPL 3 Men's Football Round 11,** Nambour Yandina Utd FC v Baringa FC at 6pm, Nambour Yandina Utd FC-Field 1.
- **Sunday May 26: Local rugby league. A Grade Men Round 7.** Noosa v Nambour at Tewantin Sports Complex - Field 1, 3:00pm kickoff.
- **May 29: Project 24 Monthly Showing** at 2nd Space from 5:30 pm to 7:30 pm.

- **May 31: Catch "Krishnan's Dairy" and "Scraps"** Joy Hinckley at the Black Box Theatre.
 - **May 31: Bingo, 9:30-11:30am, Mapleton Library** and Community Centre
 - **May 31: Fat Picnic Indulge in** a "Fat Picnic" at The Presynct starting at 6pm.
 - **May 31-June 9: Little Village Theatre presents 'The Royal Galah Performance',** Palmwoods Guide Hut, 2pm-4pm. Tickets \$30, includes afternoon tea. Book: Moira, 0409 026 145.
 - **May 31 and June 1: Maleny Show, Maleny Showgrounds.**
 - **May 31: 3bCreative presents 'Scraps' and 'Krishnan's Dairy'** at the Black Box, Nambour, limited season. Book at www.trybooking.com/events/landing/1164047.
 - **Fri, May 31, 2024, 7:30pm: Men's Rugby Caboolture** versus Nambour at Caboolture Field 1.
- For further event details or to plan an event inclusion, please email editor@svgazette.com.au.**



Whether you indulge and stay in our luxury treehouse accommodation to rejuvenate amongst the rainforest or take a day trip and dine on the deck in our award-winning restaurant, you're guaranteed an unforgettable experience.

Stay
in a luxury
treehouse!



Call our team for special
mid week rates!

Visit our website

www.secretsonthelake.com.au
call 07 5478 5888 or email
info@secretsonthelake.com.au



Say
"I DO"



Intimate Elopements
to Grand Affairs

Enquire

with our Wedding Coordinator at
events@secretsonthelake.com.au

Dine
in our Café
& Restaurant



Overlooking Lake Baroon

Tues - Sun : 8am - 4pm
Breakfast : 8am - 10:30am
Lunch : 11am - 2:30pm
Coffee & Cake all day!



Avoid disappointment and prebook your table
via OpenTable or email for group bookings
dining@secretsonthelake.com.au

BOOK NOW
for
Christmas
in July



We cater for groups
of all sizes & love
special celebrations!

LIVE MUSIC

EVERY WEEKEND
FROM 8:30PM | FREE ENTRY | 18+

FRIDAY NIGHTS	SATURDAY NIGHTS
MAY 17 DJ MOTO SAS 24 DJ MR SPARKLE 31 DJ DOLLYPOP	18 M7 25 7 DAY WEEKENDS CHECK OUR FACEBOOK PAGE OR WEBSITE FOR WHO IS PLAYING EACH WEEK



7-DAY WEEKENDS

SATURDAY 25TH MAY
LIVE FROM 8:30PM

18+ EVENT | FREE ENTRY



FREE POOL ON SUNDAY



BISTRO OPEN 7 DAYS

DRAWN 29TH JUNE FROM 2PM

Lucky DUCK

\$20K PRIZE POOL

\$12,000 GRAND PRIZE **\$4,000 MAJOR**
\$1,000 MINOR **\$3,000 IN MINI PRIZES**

MEMBERS WILL EARN AN ENTRY TICKET WITH EVERY \$60 DROP
T&C'S APPLY - YOU MUST BE HERE TO WIN

BAYBLUE REWARDS

Reach new heights with Bayblue Rewards

TGIF

FRIDAY FUN FROM 4PM

- RAFFLE TICKETS FROM 4PM
- ROCK, PAPER, SCISSORS FROM 4:30PM
- SAUSAGE SIZZLE FROM 4:30PM
- BEAT THE BOSS FROM 5PM
- PICK A NOSE FROM 5:30PM

SATURDAYS IN THE TAB

UNLUCKY LOSERS 2 X \$50 VENUE VOUCHERS UP FOR GRABS

ENTER THE LUCKY 75 TRIFECTA FOR YOUR CHANCE TO WIN

LUCKY 75 TRIFECTA PICK ALL 3 WINNERS IN RACE 7 FROM BRISBANE, SYDNEY & MELBOURNE TO WIN THE PRIZE POOL JACKPOT'S \$50 WEEKLY

MAY Sunday LIVE

JAM SESSIONS
5th & 19th
CONTACT KALEB ON 0409 850 062

BREEZE DUO
12th
FROM 2PM

PAUL VERCOE
26th
FROM 2PM

28-34 MAIN STREET PALMWOODS | BOOKINGS ESSENTIAL | 1300 PALMWOODS | WWW.PALMWOODSHOTEL.COM.AU | f

Bottlemart

There's more in store

There's more in store

WHEN YOU SHOP LOCAL



10 PACK

\$51.99 EACH

JAMESON 6.3% VARIETIES, BUNDABERG OP RUM & COLA 6% OR JACK DANIEL'S TENNESSEE WHISKEY & COLA 4.8% VARIETIES 10 X 375ML CANS



\$48.99 EACH

XXXX GOLD 24 X 375ML BOTTLES OR CANS



\$52.99 EACH

GREAT NORTHERN SUPER CRISP 24 X 330ML BOTTLES OR 375ML CANS



\$63.99 EACH

COOPERS ORIGINAL PALE ALE 24 X 375ML BOTTLES OR CANS



10 PACK

\$37.99 EACH

WOODSTOCK BOURBON & COLA 4.8% 10 X 375ML CANS



\$41.99 EACH

SKYY VODKA OR GRANT'S SCOTCH WHISKY 700ML



\$52.99 EACH

CHIVAS REGAL 12YO SCOTCH WHISKY 700ML



\$12.99 EACH

BABBLING BROOK MARLBOROUGH SAUVIGNON BLANC 750ML



SAVE \$6
ANY 2 FOR
\$18

YELLOW TAIL WINES (EXCL. PROSECCO) 750ML



SAVE \$15
ANY 2 FOR
\$25

BROWN BROTHERS MOSCATO, DOLCETTO OR CIENNA WINES 750ML

FOREST GLEN CELLARS - FOREST GLEN
MOOLOOLAH CELLARS - MOOLOOLAH
PALMWOODS CELLARS - PALMWOODS
PALMWOODS DRIVE THRU - PALMWOODS



PICK UP



DELIVERY



FIND US

GET THE APP





SHOP 5/6-22 CURRIE STREET, NAMBOUR
 Central location within walking distance to Nambour Plaza & Nambour Train Station, accessibility for both clients and employees is unparalleled. Providing 73m2 of air conditioned office, retail or consultancy space and ready to occupy now.

2/57 CURRIE STREET, NAMBOUR
 Centered in the heart of Nambour, with an abundance of foot and vehicular traffic, this 35m² retail tenancy is a perfect blank canvas for businesses looking to make the most of this prime location.

FOR LEASE

- 1/65-71 Currie Street, Nambour
- 6-22 Currie Street, Nambour
- 64-66 Howard Street, Nambour
- 6 Mitchell Street, Nambour
- 40 Howard Street, Nambour
- 1/6-22 Currie Street, Nambour
- L6 Lowe Street, Nambour
- 52-64 Currie Street, Nambour
- 2/65-71 Currie Street, Nambour
- Suite 2 - 71 Blackall Terrace, Nambour
- Shop 7/18 Blackall Street, Woombye
- 4/18 Blackall Street, Woombye



Elisha Vale
 0457322649
 elisha@c21livinglocal.com.au

CENTURY 21 Living Local



Blackall Terrace Dental
 NAMBOUR

New patient welcome offer

TOTAL: \$199 or NO-GAP!

- Comprehensive exam
- Oral cancer screening
- Intraoral photography
- All necessary x-rays
- Scaling & polishing
- Topical fluoride
- Treatment planning

Call to book or go online
(07) 5441 3583
 blackallterrace.com.au



Scan to book your next visit.

*New patients only. T&Cs available online. Valid to 30.03.23



ROVER AUTUMN OFFERS

HUMM90 NO DEPOSIT IFC 36 MONTHS
 ZIP PAY NO DEPOSIT IFC 60 MONTHS

SALE



RIDER

- 30" MINI RIDER HYDRO RRP-\$3,799 **\$3,499**
- 24" ROVER MICRO RIDER RRP-\$3,099 **\$2,999**
- 30" MINI RIDER 6 SPEED MANUAL RRP-\$3,299 **\$2,999**

24" DECK
 30" DECK
 5+5 WARRANTY

New RANCHER



LAWN KING

- 36" ROVER RANCHER AUTODRIVE 547CC 36" FOOT CVT AUTODRIVE RRP-\$4,099 **\$3,899**
- 42" ROVER LAWN KING KAWASAKI ENGINE 18HP V TWIN RRP-\$5,399 **\$4,999**
- 42" ROVER LAWN KING KAWASAKI ENGINE 21HP AUTO DIFF LOCK V TWIN RRP-\$6,299 **\$5,899**

New
 I-547/42 HYDRO RRP-\$4,899 **\$4,499**

UP TO 2 ACRES
 5+5 WARRANTY

ZERO TURN



- 42" ROVER RZ42 ZERO TURN 679CC V TWIN RRP-\$7,099 **\$6,899**
- 46" ROVER RZ46 ZERO TURN 21.5V TWIN KAWASAKI RRP-\$8,399 **\$7,999**

42" DECK
 46" DECK
 5+5 WARRANTY

FREE LOCAL DELIVERY • COMPLEMENTARY 4 LITRES OIL SUPPLIED BY NORTH COAST MOWER CENTRE (2 LITRES RIDER MODELS) FOR 1ST OIL CHANGE SERVICES



CUB CADET AUTUMN OFFERS

HUMM90 NO DEPOSIT IFC 36 MONTHS
 ZIP PAY NO DEPOSIT IFC 60 MONTHS

ELECTRIC CUB CADET RIDE ON MOWERS
 BOTH WITH 6 YEAR WARRANTY INC BATTERIES.



- CC30E RRP-\$6,799 **\$6,399**
- LT42E RRP-\$9,999 **\$8,799**

6 YR WARRANTY
 30" CUTTING DECK
 ELECTRIC POWER

XT & LX



- XT1 42 INTELLIPOWER RRP-\$5,199 **\$4,799**
- LX42 XT2 24HP V TWIN KAWASAKI RRP-\$6,999 **\$6,499**
- New Model**
 LX42 XT2 PUSH BUTTON START. TRACTION CONTROL RRP-\$6,999 **\$6,499**
- LX46 679CC V TWIN EFI RRP-\$7,599 **\$6,999**

3 YR WARRANTY
 SYNCHRO STEER

PRO Z

- PRO Z 148S RRP-\$16,999 **\$14,999**
- PRO Z 760S RRP-\$27,499 **\$23,999**
- PROZ 972SD RRP-\$34,499 **\$27,999**
- PRO Z 972SDL RRP-\$36,499 **\$31,999**

DUEL WHEELER BEACON BUT NO LIGHTS. SELF LEVELLING SEAT *while stocks last*

FAB DECK
 SYNCHRO STEER

ZERO TURN ULTIMA LAP BAR



- ZT1 42" PRESSED DECK 21.5HP V TWIN KAWASAKI ENGINE RRP-\$7,599 **\$6,999**
- 42" FABRICATED DECK 21.5HP V TWIN KAWASAKI ENGINE RRP-\$8,299 **\$7,699**
- 46" FABRICATED DECK 23HP V TWIN KAWASAKI ENGINE RRP-\$8,799 **\$8,299**
- ZT2 54" FABRICATED DECK 23HP V TWIN KAWASAKI ENGINE RRP-\$10,299 **\$9,499**
- ZTX5 48" FABRICATED DECK RRP-\$13,999 **\$12,799**
- 54" FABRICATED DECK RRP-\$14,899 **\$13,499**
- 60" FABRICATED DECK RRP-\$15,899 **\$14,699**

ZTZS4 48" FABRICATED DECK 23HP KAWASAKI V-TWIN RRP-\$14,499 **\$12,999**

ZTXS4 54" FABRICATED DECK ULTIMA STEERING WHEEL RRP-\$14,899 **\$13,899**

ZTXS5 **New Models**
 54" FABRICATED DECK ULTIMA STEERING WHEEL RRP-\$15,199 **\$13,999**

OUR BEST SELLING MOWERS "STILL ON SALE"



ZTS1
 4 WHEEL STEER

- 42" FABRICATED DECK RRP-\$8,899 **\$7,999**
- 46" FABRICATED DECK RRP-\$9,599 **\$8,499**

FREE LOCAL DELIVERY • COMPLEMENTARY 4 LITRES CUB CADET OIL FOR 1ST SERVICES



North Coast MOWER CENTRE

Ph: 07 5441 5455 | 36 Coronation Ave, Nambour
 www.northcoastmowercentre.com

Mon - Fri: 8am - 5pm
 Sat: 8am - 12pm