

Nambour & Hinterland

BUSINESS DIRECTORY 2023-24



The Go-To-Guide to shopping, cafes, restaurants, trades & professional services, health & beauty and more.

WE'RE PROUD TO
be local, live local and support local



SUPPORTING LOCAL SPORTING CLUBS



FRESH & LOCAL



LOCAVORE PROGRAM



AWARD WINNING STORES



HIGHLY SKILLED & PASSIONATE GROCERS



WHITE'S **IGA** BLI BLI

Shop 1, "Bli Bli Village River Markets"
320 David Low Way, Bli Bli, Qld, 4560
P: 07 5448 5088 E: blibli@whitesiga.com

WHITE'S **IGA** MT COOLUM

Shop 14, "Mt Coolum Shopping Village"
Corner Suncoast Drive & David Low Way, Mt Coolum, Qld, 4573
P: 07 5446 3200 E: mtcoolum@whitesiga.com

WHITE'S **IGA** PEREGIAN BEACH

Shop 5 "Peregian Village Market"
215 David Low Way, Peregian Beach, Qld, 4573
P: 07 5373 8516 E: peregianbeach@whitesiga.com

WHITE'S **IGA** MOOLOOLAH

4-10 Jones Street,
Mooloolah Valley, Qld, 4553
P: 07 5494 7142 E: mooloolah@whitesiga.com

WHITE'S **IGA** BARINGA

Shop M01, Stockland Baringa Shopping Centre,
1 Edwards Terrace, Baringa, Qld, 4551
P: 07 5341 8573 E: baringa@whitesiga.com

WHITE'S **IGA** FOREST GLEN

Tenancy A1, "Forest Glen Village Centre"
Building 1, 15 Grammar School Way, Forest Glen, Qld, 4556
P: 07 5380 6355 E: forestglen@whitesiga.com

www.whitesgrocers.com.au

Don't want to miss out on this week's specials?
Scan here to view the catalogue now!





30 YEARS *of fresh and local*

IF YOU LIVE ON THE SUNSHINE COAST, CHANCES ARE, YOU'VE VISITED A WHITE'S IGA STORE. WHILE NOW A MUCH LOVED BRAND, KNOWN FOR CHAMPIONING LOCAL PRODUCTS AND ELEVATING EXPOSURE FOR LOCAL BUSINESSES, THE WHITE'S IGA STORY COMES FROM THE HUMBLEST OF BEGINNINGS.

30 years ago, almost to the day, Roz and Michael White took their first steps into the world of groceries and retail. With a team of just three employees the pair ran the 7-day-a-week NightOwl located in the heart of Maroochydore. It's in this small but bustling little store that the first sparks of the White's IGA Group were ignited.

Fast forward to 2023 and White's IGA Group now operates six successful stores with a growing team of highly skilled and passionate grocers. Every store showcases their Locavore program - a movement that supports producers, suppliers and community throughout the Sunshine Coast and beyond.

"Our Locavore program is something that is totally distinctive to our six supermarkets. It helps customers to easily identify the abundant range of locally sourced, grown, and produced grocery goodies," White's IGA owner, Roz White said.

"When food is sourced locally, it travels less distance and stays almost as fresh and nutritious as the day it was plucked from the soil, trees or plants. It also puts dollars back into our community and supports Sunshine Coast families.

"Our locavore philosophy fits with the White's culture of creating sustainable communities with purpose. Our stores source and stock 35 percent of store purchases from local growers, producers and independent suppliers. A store such as IGA can't survive without the support of the local community and we're proud to support those who support us," Roz said.

A sustainable future for all

Another core part of the White's IGA value system is their focus on improving sustainability. This applies to the machinery and technology they use, the suppliers they partner with and how they support sustainable lifestyles for their team.

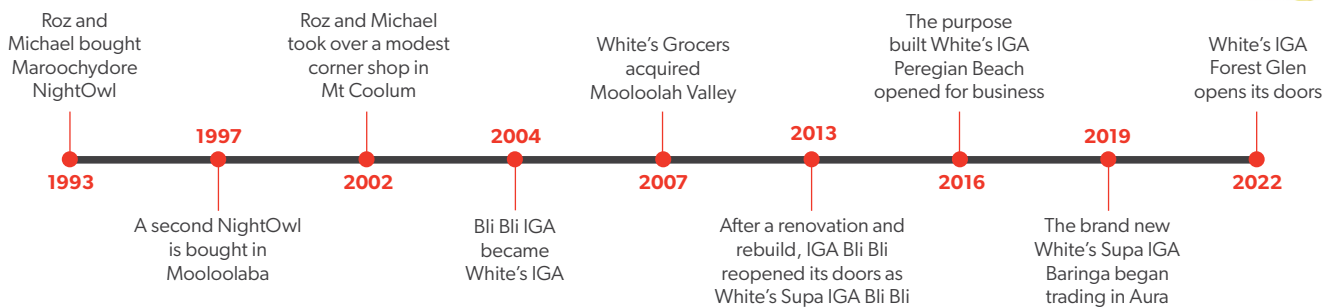
Environmentally friendly and energy efficient refrigeration, LED lighting and recycled water heating are all part of the White's IGA eco-friendly approach.

While a bespoke White's IGA leadership conference paved the way for a new, innovative, more balanced approach to the careers, personal development and health of their employees.

For Roz, caring for people and planet is at the heart of every move the business makes.

"The choices we make as a business have the power to nourish, support and contribute to our community of workers, local families, businesses and producers as well as the future environment for our children and grandchildren. At White's IGA, it's imperative we give back as much, if not more than we take," Roz said.

30 years in the blink of an eye



Nambour's time to shine



Introduction by Nambour Chamber of Commerce President Mark Bray

Welcome to the Nambour & Hinterland Business Directory. As the owner of a business in Nambour from 1986 to 2021 I can attest to the fact that Nambour is a great town and an excellent place to do business. I have a saying that if you look in the right places in Nambour

you will find most things that you need. There is so much to offer in Nambour, and much of it is on display in this magazine.

As President of the Nambour Chamber of Commerce I can see how businesses are thriving in Nambour. As the gateway to the Hinterland, Nambour and surrounding towns provide a point of difference, with their cafe, music and arts culture integrated with new and long term, successful businesses.

Sunshine Coast Council is a great supporter of business in Nambour and is doing many things to make Nambour the place where people can do their business and enjoy their recreation. Our local councillor and State Member are also strong supporters of the town. The Chamber conducts networking events that assist business owners to network and promote their business to the wider population.

With the growth of the Sunshine Coast and in particular Nambour and surrounds, the business future for Nambour looks extremely bright and I have no doubt that Nambour will continue to be an integral part of that future growth.

Eat & Drink 4-11

Secrets Dining on the Deck, Club Hotel Namba, Nil Desperandum, Sunshine & Sons, Frankie's Woombye, Steampunk Distillery, The Gourmet Storr, Palmwoods Bowls Club, Palmwoods Hotel, Mix Taste Eat, The Barn on Flaxton, DownTown Nambour, Nambour RSL.

Stay & Play 12-13

Thrill Hill Waterslides, Silhouette Cottage, Challenge Accepted, Nambour Book Exchange, Ginger Factory.

Retail 14-17

Set Together Jewellery, Nambour Heights Gifts & Christmas Shop, Heretics Haven, Kerry's Kaftans, Bad Habit Records, Onya Bike, Clock Shop Montville.

Look Good Feel Good 18-19

HB Beauty Palmwoods, Peachy G Hair Studio, Uptown Hair Studio.

Good Health 19-27

Hinterland Physio, Wilson Fitzpatrick Family Optometrists, Mooloolah Massage & Bowen Therapy, Body Heights Remedial Massage, Blackall Terrace Dental, Sacred Body, Woombye Chiropractic, Integrated Healing Therapies, Shunyata Essence Healing, Classical Yoga in Kureelpa, Hammond Optometry, Whistling Kite Healing Therapies, The Chi Hub Nambour, Bottoms Up

Colonics, Elite Foot Care Woombye, Fridelle Stanyer, Suncoast Audiology, Abbys Infusions.

Real Estate 28-32

Century 21 Living Local Woombye, RE/MAX Property Sales Nambour, Century 21 Living Local Nambour, McGrath Hinterland Real Estate, VB Real Estate, Roger Loughnan Real Estate, Terry Hinds Real Estate.

Professional Services 32-38

Kari Artisan Celebrant, 4CP Promotional Products, Lisa Brereton Civil Marriage Celebrant, Place 360, Gigil Design Studio Services, Intersect Business & Accounts Services, Butler McDermott Lawyers, Hinterland sustainable Architects, BOQ Nambour & Hinterland, Bradley & Bray Lawyers, Woombye Vet Surgery, Easy Travel & Cruise.

Education 39

Nambour State College.

Trades & Services 40-50

PaintRight Nambour, Custom Curtains & Shade, AML Plumbing & Gas, Auto Electrics QLD, Coastal Skylights and Ventilation, Coastal Landscapes, Northern Industrial Sales, Archers Termite & Pest Control, GR Fleet Services, Sunshine Steering.

Community Directory 51-54

EAT & DRINK

SECRETS DINING ON THE DECK

Enjoy the hospitality.
Drink in the view.

SECRETS Dining on the Deck is a perfect destination to bring your colleagues, friends and family. Celebrate while enjoying delicious food and amazing views of Lake Baroon and the rainforest.

"Our visitors have come to consider this place as a destination because of our location and surroundings, as much as the food and hospitality," said owner, Aldy Johnston.

Diners are surrounded by and intimately connected with nature.

"This place is our home and so that is the type of welcome George and I extend to all of our guests" said Aldy.

"We have a fabulous team here and I think people return and bring their friends and family because we make them feel so welcome and relaxed."

The atmosphere at Secrets is enhanced by the incredible food prepared in-house.

"We are very proud of our menu, which changes with the seasons to showcase our fantastic local produce," said Aldy.

"Everything is fresh and flavoursome



and I am especially happy with the superb desserts menu our chefs have designed."

You can enjoy a delicious range of morning and afternoon tea melt-in-your-mouth

sweets, including a large array of gluten free options. Group bookings for Secrets' renowned champagne or chocolate high teas are a specialty.

"We can cater for groups of up to 80 people and have some great group packages available," Aldy said.

Secrets on the Lake Cafe is also the stunning night time reception venue for many weddings held at the charming

Lakehouse or magnificent Secrets Garden. Some of the major events on the Secrets calendar include a Christmas Special Menu, Love Month in February and Christmas in July. "We have a fully licensed bar and are open 6 days a week serving breakfast from 8.30am during the week and 8am on weekends," Aldy said.

"Lunch is available from 11am, and we serve champers, coffee & cake until 4pm."

The cafe is closed on Mondays and some public holidays. "I strongly advise people to book a table, to avoid disappointment," said Aldy. "The last thing we want is for people to miss out."

207 Narrows Road, Montville | 5478 5888
diningonthedeck.com.au



CLUB HOTEL NAMBA

The People's Pub. Established 1912

YOU don't last 100-plus years without a strong ticking heart, a persistence to survive and a will to serve your community. The newly renovated Club Hotel Namba certainly possesses the strong heart beat of an iconic Queensland Hotel – a fair dinkum pub!

"We want to provide a genuine pub experience for the people of Nambour can rely on to provide a great meal, comfort, exceptional entertainment and a place for the entire family to enjoy," said owner Paul Harley. "And we don't have gaming, so that promotes a different type of family-friendly atmosphere that people are appreciating."

Established in 1912 the Club Hotel has ridden some waves, just like the town it calls home, but owners Paul and business partner John Allen said the town had welcomed them with open arms and they look forward to a bright future.

"It's a community pub," said Josh. "It's 'the People's Pub. We want people to feel

comfortable, whether it's family, a couple of tradies after work, or whatever walk of life they come from."

"I think a great local pub is a characteristic of any great town and Nambour has been missing that for a little while," Josh said.

"That really nice friendly atmosphere is important. And today it's expected by people looking for a quality hotel or pub. That's what we're doing for Nambour: good beer, good pub food and a welcoming atmosphere for families, friends and functions."

Nambour's most iconic building also offers an array of private function and dining room spaces to suit any style of event. From a sit-down dinner, to stand-up cocktail events, the function team will create a seamless and memorable experience for you and your guests.

"The pub was established in 1912 and is 110 years old," Paul said.

"Our goal is that in 2112, 200 years from establishment, this is still a thriving

country hotel. We won't be here. But, this pub will be, hopefully, if we do the groundwork over the next few years."

Menu selections

A small sampling from the menu includes the following value-packed selection: FOMO Plate with Rump, Parm, Fish and Wings all on one plate \$40, Rump Steak \$20, Parm Selection \$25, Hand Battered Flathead \$18, Creamy Garlic Prawns \$18, Beetroot and Honey Pumpkin Salad \$22, Classic Caesar Salad \$15, Kid's Choices of Steak, Chicken, Burgers \$10 plus free Ice Cream. A Great Selection of Share Plates like Jalapeno Poppers, Cauliflower Popcorn or Arancini Ball from \$10. (Correct at time of printing but please check for new menus).

www.facebook.com/TheNamba
www.clubhotelnamba.com.au
 80 Currie Street Nambour
 0435 262 995
info@clubhotelnamba.com.au



Nil Desperandum' is Latin for the Aussie mantra, 'no worries'.



Matt Hobson and Michael Conrad



Head Distiller Adam Chapman



NIL DESPERANDUM

A rum revolution is brewing in Woombye

FROM a historic license in Woombye to producing Australia's finest rum, the journey of Nil Desperandum, helmed by founders Matt Hobson and Michael Conrad, is a testament to Queensland spirit.

Their certified organic molasses rum is a vivid homage to the state's rich heritage. And with every bottle they raise the bar, making history and headlines in the distilling world.

This duo, along with Head Distiller Adam Chapman, introduced the world to 'Sunshine & Sons', initially charming connoisseurs with vodka and gin. Yet, it was on 22/02/2022, at precisely 2.22pm, that they unveiled a masterpiece: Australia's premier certified organic molasses rum, 'Nil Desperandum First'. It was a creation that showcased their relentless pursuit of excellence.

"We stand as the third-largest rum producer in Australia," Matt said with palpable pride. "Rum is synonymous with Australia, ever since it was brought over on the first fleets. We also believe

its inherently Queensland. We source Queensland-grown sugar cane and it's harvested and milled here in Queensland too. We are one of the only certified organic distilleries in Australia."

The name 'Nil Desperandum' carries weight and history.

Rewind to 1871: James Costar received the nod to vend spirits in Woombye, dubbing his establishment 'Nil Desperandum' – Latin for the Aussie mantra, 'no worries'.

"Our rum resonates with the spirit of Australia, tracing its roots to the first fleets," said Matt. "It's not just Australian. It's quintessentially Queensland and echoing the region's soul."

"It captures the Sunshine Coast's laid-back aura and pays homage to Woombye's pioneering spirit," said Michael.

From their flagship rum to the intriguing 'Botanical' – a double-vapour infused gin basket rum exuding notes of coffee, cinnamon and lime – every bottle is a testament to artistry and science.

"It's our dream to present Australia's

Finest Rum to the world – unadulterated, crafted only with molasses, Woombye water and wild yeast," said Adam.

This aspiration isn't just talk. At the 2023 Melbourne Royal Australian Distilled Spirits Awards, out of 52 medal-worthy rums, Nil Desperandum clinched medals for all nine of its entries, with '44 Special' securing coveted gold.

"These accolades reveal the unmatched quality Nil Desperandum brings from the heart of the Sunshine Coast," said Adam.

"We have a significant diversity of rum styles in oak across the board and for nine from nine entries to collect medals shows the quality we're producing here on the Sunshine Coast."

Craving a taste?

The distillery welcomes enthusiasts daily, from 10am until sunset, offering tours and tastings amid a serene rainforest setting at ...

www.nildesperandum.com.au
104 Nambour Connection Road Woombye



The Sunshine & Sons team



A tour of the Woombye distillery.

SUNSHINE & SONS

That's the Coast spirit

YOU have probably heard that there's a small gin distillery at Woombye – Sunshine & Sons. But have you had a chance to visit it yet?

Nestled in lush hinterland rainforest, neighbouring and just a short drive from Queensland's iconic and much-loved Big Pineapple is Sunshine & Sons Distillery.

Pot-distilled with a carefully curated mix of local and traditional botanicals, their spirits evoke the memory, allure and the warmth of the coast.

A firm favorite is the Pineapple Parfait Gin – a contemporary tropical fruit salad gin packed with flavour that tastes like a holiday.

It's a tribute to those glorious pineapple parfait desserts that made visiting The Big Pineapple the best day ever.

"Sunshine & Sons is a feeling," says CAVU Distilling Co-Founder Matt Hobson.

"It's the feeling of salt air on your skin – the sun at your back.

"It's the feeling of freedom, of escape, of what it's like to get away. We call it the Coast spirit.

"The feeling you get when you walk down to any one of our incredible beaches or through the lush hinterland rainforest.

"When you know you are really in the best place on earth and in the place you are meant to be.

Warmth, and sunshine

"It's about friendship, caring, listening, togetherness, warmth, and sunshine."

You certainly get that feeling when you visit the distillery at Nambour Connection Road Woombye.

"It's a place you can relax and soak up the sunshine whilst sipping on a delicious cocktail or two.

Take a tour of the distillery or taste some spirits whilst snacking on a Woombye cheese platter.

"We wish the world had more of The Coast Spirit," says Matt.

"And, for our part, we're committed to

working hard every day to make it so.

"We love producing beautiful spirits, supporting community and preserving the beautiful environment where we have the privilege to live and work."

Word is spreading

Meanwhile, word is spreading nationwide.

The Coast spirit recently won gold at the 2023 Gin Distillers Association Awards and the 2023 Melbourne Royal Australian Distilled Spirits Awards for Original Dry Gin.

The Barrel Aged Gin also received a gold medal at the 2023 Gin Distillers Association Awards.

The Distillery is open every day from 10am until sunset for tours, tastings and cocktails on their rainforest-surrounded terrace.

See the website for more information.

www.sunshineandsons.com.au
104 Nambour Connection Road Woombye



Owner Rebecca Galler



FRANKIE'S WOOMBYE CAFE & BAR

Heartfelt hospitality, culinary delights

As the saying goes, good things come in small packages, and Frankie's Woombye Cafe & Bar is just that. Owner Rebecca Galler's charming establishment is a delightful café by day, serving delectable coffee and food.

But as the sun sets, Frankie's transforms into a cozy haven where people can gather, savour good whisky, wine, and cocktails, all while relishing in truly delicious meals.

Frankie's trendy tiled floors, high bench tables, and an alfresco area adorned with twinkling fairy lights create an inviting ambiance that beckons visitors to relax and unwind.

Rebecca's long-term dream of creating a place where people can connect over great food and drinks has truly come to

fruition. The café's name itself, inspired by her little girl, signifies the heartfelt hospitality that Frankie's is built upon.

Chef Jade's culinary prowess adds to the charm and it has quickly become a local favourite.

For Rebecca, hospitality goes far beyond just serving dishes. Growing up, she cherished family gatherings that involved the making and sharing of great food, and now, she extends that same warmth and care to her customers.

"Being hospitable to others is about more than simply combining ingredients to make a dish," Rebecca said. "The intention, energy, and love that go into cooking and baking contribute to the end experience of the dish, allowing us to connect with our customers through food."

At Frankie's, the mantra is simple: treat

others as you want to be treated. "You never know what people have going on in their lives. I am blessed to have incredible staff around me. We might make 200 coffees in a day, but for each customer, they will only experience one cup. So we want that to be the best experience for them that it can possibly be."

Whether you wish to watch the world pass by from the high benches out front or share joyful moments with friends in the cozy indoor seating area or the quaint courtyard out back, Frankie's has the perfect spot.

Experience the heart and soul of hospitality at Frankie's Woombye Cafe & Bar.

www.frankieswoombye.com
frankieswoombye@gmail.com
2/9 Blackall St | 0448 425 487

STEAMPUNK DISTILLERY

Gin, vodka & liqueurs

Steampunk Distillery is a small artisan distillery owned and operated by two nurses, with a vision to turn condensate to distillate.

Nestled in the hills of the Sunshine Coast Hinterland, Steampunk is a rural distillery using home-grown botanicals in their unique range of gin, vodka and liqueurs which are sourced directly from their orchard.

Steampunk Distillery produces award-winning, authentically handmade spirits, as well as several seasonal gins using the freshest of locally grown ingredients, with no use of artificial colours or flavours.

Each bottle is nursed to Life. Steampunk Distillery creates the ferment for creation of their vodka, which is then triple distilled into

smooth, craft artisan vodka.

"We offer a unique rural distillery experience, not available on the Sunshine Coast, for hinterland visitors to see the process of how we create our spirits, walk in our orchard and pat the Distillery bovines."

Steampunk Distillery is a short drive from Nambour, with appointments recommended.

steampunkdistillery.au@gmail.com
2 Simons Road, Towen Mountain
0412 704 342 | 0499 293 708 | @ f



Owners Megan Coffey & Kate Gibney.
Above: Steampunk's popular Vodka.



THE GOURMET STORR

Traditional baking, time-honoured treats

THE smell of freshly-baked goods now waft the streets of Nambour as family-owned bakery The Gourmet Storr has opened its doors to retail customers longing for time-honoured treats.

Husband-and-wife owners Chris and Melissa Storr responded to growing demand from their loyal patrons, to offer a wider range of homemade products at the new bakery on the corner of Currie Street and Arundell Avenue (opposite KFC).

Chris, a skilled baker with over 24 years of experience, embraces traditional baking methods and – just like his customers – he prefers quality, long-established recipes.

“I started baking when I was 16 and through experience I have found that people really love old-school baked goods – and so do we,” he said.

“Pretty much anything that Chris makes turns out to be delicious,” Mel said. “He is just a natural.

“And if it’s not good enough for our family, it’s not good enough for our customers.”

The Gourmet Storr initially operated as

a wholesale bakery, but due to the growing demand the team now focuses all its energy on the retail front.

Chris and Mel use high-quality ingredients and time-honored recipes, ensuring each bite delights customers’ taste buds.

All the favourites

Step inside The Gourmet Storr, and you’ll be met with an array of traditional bakery favourites.

“We have sausage rolls, muffins, bee stings, almond croissants, fruit cake, vanilla slices, hedgehog slices, caramilk slices and freshly made salad rolls, plus there are more items to come,” Mel said.

Additionally, the bakery offers freshly made salad rolls, and a variety of pie flavours including pulled beef, pulled beef cheese & bacon, pulled beef curry, pulled lamb Mint & pea, pulled pork and apple, pulled beef caramelised onion, pulled beef garlic butter mushrooms and pulled beef cracked pepper.

“We also have a variety of sausage rolls and smokies,” said Mel.

Chris’s bread selection includes white,

wholemeal, fruit and cobb loaves, all baked to perfection. However, it’s the white sourdough that steals the show. The classic plain white sourdough has become a local favourite.

Innovative creations a specialty

Apart from the well-established offerings, the bakery surprises customers with innovative creations. Chris recently introduced a remarkable vegetarian sausage roll filled with spinach, ricotta, and pumpkin – a must-try for all, even those not following a vegetarian diet.

Meanwhile, Chris’s rocky road recipe has won Mel’s and customers’ hearts and is now a permanent fixture on the menu.

With The Gourmet Storr now welcoming customers every day except Monday, locals can satisfy their cravings for delightful pastries and bread at any time.

www.thegourmetstorr.com.au
Shop 5, 186 Currie Street, Nambour
0404 018 124
chris@thegourmetstorr.com.au



PALMWOODS BOWLS CLUB

Where relaxing surroundings create an unforgettable experience

NESTLED alongside a rainforest and pond is a hidden gem that offers much more than just a place to play bowls. Palmwoods Bowls Club is where camaraderie, lush greens and delightful surroundings combine to create an unforgettable experience.

The club boasts two meticulously-maintained grass greens, complete with full lighting for evening events.

“You can dine with the finest views on our covered deck overlooking the greens,” said president Glynis Myers.

“Whether you’re hosting a bowling event or planning a private function, it’s the perfect setting for every occasion.”

The club’s dining room and the covered deck accommodate up to 100 people each, ensuring guests are treated to a memo-

orable experience.

“Best of all you can elevate your social gatherings by incorporating a game of bowls into the mix, complemented by our selection of catering options. Bowls is fun, different, easy, and very social.”

Try Barefoot Bowls

For an even more laid-back, fun social outing, barefoot bowls offers a delightful escape.

“Barefoot bowls is suitable for all ages and all experience levels in a stress-free environment. The club provides all the essentials, from bowls and jacks to a helping hand if needed—all you need to do is turn up and have fun.”

From social events to corporate gatherings, Palmwoods Bowls Club knows how to create moments of joy and together-

ness. Make your way to Palmwoods Bowls Club, where the joy of bowls and the beauty of nature come together..

07 5445 9190

secretary@palmwoodsbowlsclub.com.au

palmwoodsbowlsclub.com.au

Cnr Nicklin and Chevallum Roads

functions@palmwoodsbowlsclub.com.au



PALMWOODS HOTEL

Built in 1912, the Palmwoods Hotel was then and today remains, the heart of the town.

Owned and operated by the Gazzard family, the Palmwoods Hotel has become a firm favourite for locals and visitors alike. This iconic century old pub has all the character and values of yesteryear with the comfort of today.

“We pride ourselves on our good old fashioned hospitality,” said Marketing Manager, Haylee Kessey.

“Everyone is welcome and made to feel at home.”

The Palmwoods Hotel is known for the best steaks on the Sunshine Coast and some incredible seafood to go with.

“We are extremely proud of our live music offering and we are bringing talented bands, fun events for all ages and brilliant promotions to the area,” she said.

“It’s a pub you can’t go past.”

If you’re looking for a safe family friendly dining and entertainment environment then the Palmwoods Hotel is the place to go.

28-34 Main St, Palmwoods | 5445 9003
palmwoodshotel.com.au





AMAZING FOOD EXPERIENCES

Hands-on cooking classes for you, in Nambour

From homemade staples, to fresh pasta, Asian favourites and meal-prep tips, Mix Taste Eat has a class for you.

In the middle of Nambour, these hands-on cooking workshops offer a range of themed and speciality classes, with the menu changing seasonally to showcase the best produce our region has to offer.

“This means every time you come, you’ll learn something new,” said founder and nutritionist Daneyl Green.

“My aim was to create a space where people can come together to learn more about food and nutrition,” Daneyl said.

“Mix Taste Eat is a space that encourages people to come and learn everything, from the basics of cooking healthy delicious meals at home, to

feasting with friends or trying something new.

“You can choose from one of our themed monthly classes or create your next team building workshop, celebration or event, tailored just for you.” MTE also offers Thermomix® Speciality Classes and are passionate about enabling people in our community living with a disability to cook healthy meals independently through their NDIS workshops.

Situated in Mathew Street Nambour, MTE offers the perfect opportunity to learn, hands on, with all the support you need.

hello@mixtasteat.com | 0400 394 180
www.mixtasteat.com



Now fully licensed, The Barn offers a fresh, seasonal menu and a large variety of giftware.

THE BARN ON FLAXTON

Great people, great coffee

Owned and run by local residents, Jason and Ange Bowen and Danielle Birks, *The Barn* is now fully licensed and offers a fresh, seasonal menu and a large variety of giftware.

The team welcomes tourists and locals to what has become the community hub of Flaxton.

Established in 1969 The Barn is perfectly positioned as a relaxed and tranquil destination between Mapleton and Montville.

It has built a reputation as a popular locale to meet up with family & friends for coffee, breaky or lunch.

“We see as more than just a café, it’s a place you can truly call your local,” said Ange.

445 Flaxton Drive, Flaxton
www.thebarnonflaxton.com.au
07 5400 2444

CRAVING THE PERFECT BURGER?

DownTown Nambour is now in a new, fresh and spacious location. Right on the main street, you can’t miss their world-famous soft pretzel buns and fantastic service. Choose from a range of craft beers, cocktails and milkshakes, to pair perfectly with burgers named after iconic Nambour attractions. Or wrap your fingers around a rack of ribs, crispy chicken wings, homemade onion rings or their new cheesy toast.



Lots of gluten free options available. Open seven days a week. Dine in or takeaway from noon till late.

www.downtownnambour.com
113 Currie Street Nambour | 07 5441 1587

NAMBOUR RSL CLUB

The Nambour RSL Club is situated at the gateway to the Sunshine Coast Hinterland towns of Mapleton, Montville and Maleny. We feature a delicious menu inspired by fresh local ingredients, a passion for live and free music with local and touring acts, relaxed and intimate bars and a comfortable yet luxurious gaming lounge. Our kids friendly Club is the perfect place for friends and families to meet.

14 Mathew Street,
Nambour | 5441 2366
nambourrsl.com.au



THRILL HILL WATERSLIDES

Woombye's water wonderland

Thrill Hill Waterslides is described as the best value 50 minutes of fun on the Sunshine Coast.

Since 1979 Thrill Hill at Woombye has built a reputation as one of the Coast's best days out. "You can make any day the best day ever with us," said owner Richard Law.

"We've got all the thrills and spills you can handle in one venue.

"It's thrilling for kids, but perfectly safe as the maximum pool dept is 900mm, so no swimming is required."

Located just 2km north of the Big Pineapple, Thrill Hill is the Coast's only waterslide park. "It's old fashioned fun but the kids still love it," said Richard.

"It must be good, when families leave everyone's always refreshed, energised

and happy and tell us their coming back again."

Thrill Hill offers endless waterslide fun for adults as well.

Children as young as 3, sliding with an adult, can join in as well.

Get your friends together and head to Thrill Hill for a day to remember.

"Come on down and experience the thrill of our 120-metre dynamic hydro slipslide, alongside a range of facilities to ensure you have a great day out."

thrillhillwaterslides.com | 0413 534 838

Open every Weekend, most public holidays and all School Holidays 10am to 5pm from September to May. Check our website for current open days.



SILHOUETTE COTTAGE

Luxurious five star experience

Silhouette Cottage is a multi award winning accommodation, nestled on a spectacular site with views to Mt Ninderry.

It boasts every comfort for guests to enjoy a luxurious five star experience.

"My guests are typically looking for peace, quiet and tranquility, and they get exactly that," said owner, Cindy Smith.

"The roll top bath in the garden bathroom is a particular favourite with guests."

Silhouette Cottage can accommodate small groups for short or longer stays.

The location of the cottage makes it perfect for wedding guests at nearby wedding venues and you can book direct and save.

www.silhouettecottage.com.au

38 Whistler Ridge Drive, Yandina Creek

info@silhouettecottage.com.au

0437 776 077



CHALLENGE ACCEPTED

Challenge Accepted offers a simulated environment where NERF, Laser Tag, Gelball, and Gelsoft battles take place. With the help of smoke, effect lighting and sounds, participants can immerse themselves in thrilling combat scenarios. Peter Grieger established the venue to provide a space for ages from six through to adults. Public sessions, corporate or team building events, birthday parties, after school programs & more.

34-38 Price St, Nambour | 0448 777 980 | challengeaccepted.quest



NAMBOUR BOOK EXCHANGE

The Nambour Book Exchange is one of the largest book exchanges in the country and has been owned and operated by the Bailey family for 38 years.

"It is hard to say exactly how many books we have, but it is well in the order of hundreds of thousands," said owner Darren Bailey.

"We have customers who come from Gympie and Brisbane to exchange books, which is really gratifying."

103 Currie St, Nambour | 5441 3255



GINGER FACTORY

Play, taste, discover at Yandina

LOCATED just off the highway in Yandina, the friendly team at the iconic Ginger Factory invites you to embark on a journey filled with play, taste and discovery.

“We have captivating attractions and tours for the young and young at heart,” said Tourism Manager, Brenda Bailey.

From unveiling the secrets behind the world of ginger to the lifecycle of the honeybee, the Ginger Factory is a fabulous place to spend happy hours making memories.

“‘Moreton’ the Ginger Train is a traditional favourite with our guests and it transports you through the lush nine-hectare grounds and picturesque subtropical gardens at a leisurely pace,” Brenda said.

“Smaller guests absolutely love to climb aboard the Overboard Boat Ride and join the gingerbread man on an adventure sailing around the world and our team of chefs have devised a tantalising and extensive menu at The Ginger Kitchen, showcasing the best of the Sunshine Coast’s seasonal produce.”

A fun day out isn’t complete without a gelato from Gingerlatis. “Our Gelati & Dessert Bar offers 18 handmade gelato flavours, churned right here at The Ginger Factory,” said Brenda. “For some extra indulgence, we have lollies, donuts, shakes and sundaes available every day.”

Unique gifts in the boutique stores

Immerse yourself in the charming heritage-style village, where you’ll find a treasure trove of unique gifts in the boutique stores or discover the perfect blend of native and tropical plants available for sale in The Potting Shed.

Whether you’re seeking family fun or a day of exploration, The Ginger Factory promises to create memories to last a lifetime.

Admission is free and The Ginger Factory is open 7 days, 9am to 5pm (Closed Christmas Day).



50 Pioneer Road, Yandina
1800 067 686
gingerfactory.com.au



Master Jeweller, Lisa Clune.



SET TOGETHER JEWELLERY

Engagement ring & remodelling specialist

SET Together Jewellery was founded by experienced and passionate Master Jeweller, Lisa Clune.

Lisa specialises in crafting custom-made engagement rings and wedding bands that tell stories of love and devotion.

Lisa is a seasoned gemmologist, jeweller, and jewellery designer who brings over a decade of expertise to every creation that emerges from her studio. With a commitment to artistry, quality, and customization, Lisa has earned a reputation as a trusted name in the world of fine jewellery.

"Every step of the design process is a collaboration between myself and my clients," said Lisa.

"I listen to their ideas, preferences, and stories and translate them into bespoke and meticulously handcrafted pieces that

encapsulate emotions and memories.

"From selecting the perfect gemstones or incorporating sentimental gemstones, to choosing the right metals and design elements, I ensure that each ring holds deep personal significance."

Having honed her skills over years of dedication, Lisa now brings her expertise to the forefront as she designs and creates each piece herself. This hands-on approach not only guarantees exceptional quality but also ensures that every engagement ring that leaves the Set Together Jewellery studio is a true embodiment of the client's vision.

In an era where mass production overshadows the sentiment behind jewellery, Lisa remains steadfast in her pursuit of authenticity and connection.

"I bring together thousands of hours of experience with my absolute passion for

connecting with my clients and learning their stories to create engagement rings that are totally unique, beautiful and meaningful. It is such a privilege to be a part of their journey," Lisa said.

Remodelling service

Set Together also offers a remodelling service to turn your unworn jewellery into a new piece that can be cherished for decades to come.

If you are looking for a truly distinctive engagement ring that embodies your story and is designed and crafted by a Master Jeweller, Set Together Jewellery is the place to go.

www.settogether.com.au
designs@settogether.com.au
0421 201 456
B4/354 Mons Road, Forest Glen



Owner, Ange Dunne.



NAMBOUR HEIGHTS GIFTS & CHRISTMAS SHOP

Keeping the Christmas spirit alive

OWNER Ange Dunne of Nambour Heights Gifts & Christmas Shop believes the magic of Christmas should not be confined to December. It should fill every month of the year.

It is this philosophy that inspired her to expand her gift store, transforming it into a year-round Christmas haven.

"Sometimes you've got to be brave enough to do what other people aren't going to do," Ange said, recalling her decision to open this festive shop last September.

This brave move was met with curiosity as people questioned, "Why?" Her simple response? "Why not?"

Ange said many of her customers found joy in Christmas and happily celebrated

it all year. "You have people who adore Christmas and they enjoy having a look all year round," she shared.

Her shop serves not only the December enthusiasts but also those celebrating Christmas in July.

From lanterns, baubles, candles, and Grinches to elves on shelves, Santa Clauses, and snowmen, the shop is packed with Christmas offerings that satisfy any holiday craving.

Adjacent to the Christmas wonderland, Ange's gift store boasts an array of unique and beautiful items.

"We carefully select only quality items that are unique to our demographic," she said.

They also offer a signature line of products, including their own soy candle label,

tealights, wax melts, and bath bombs, which are exclusive to their store.

Carefully curated range

Their carefully curated range includes greeting cards, reed diffusers, notebooks, socks, inspirational items, and more.

They are also the local stockist of the Australia Didgeridoonas cooler bag range, Robert Gordon homewares, and Erstwilder Brooches.

Ange's Nambour Heights Gifts & Christmas Shop has become a sanctuary for those seeking unique gifts and the year-round enchantment of Christmas.

125 Mapleton Road, Nambour
dnadunne@bigpond.com
0407 037 719

HERETICS HAVEN Where gaming comes to life

Step into Nambour's ultimate gaming haven, where the thrill of gaming comes to life for enthusiasts of all ages.

Heretics Haven is not just a store; it's a vibrant community that embraces the passion and camaraderie of gamers from all walks of life. "With an expansive gaming space, it's a true haven that caters to every gamer's desires, whether you're into Warhammer miniatures, the latest Pokémon collections, or classic board games," said owner Dave Harris, who established the business with his partner Tamara Brown in 2020.

"We foster a family-friendly environment where everyone feels welcome to explore gaming," said Tamara.

"We wanted to create a space where people can come together, share their excitement, and revel in the world of gaming."

With over 20 years of gaming experience, the couple boasts an extensive knowledge of various game formats, connecting gamers from Southeast Queensland and beyond.

"We all unite under a shared love for gaming," said Dave.

Heretics Haven is more than just a gaming store; it's an experience like no other. So, if you're seeking a place to embrace your inner gamer and become part of a vibrant community, look no further than Heretics Haven, where your gaming dreams come true. Get ready to level up your gaming journey!

www.hereticshaven.com.au

info@hereticshaven.com.au

5338 8919

91 Currie Street, Nambour



Kerry Osborne of Kerry's Kaftans.

KERRY'S KAFTANS

From kaftans to cover ups

Kerry Osborne of Kerry's Kaftans has been keeping her happy customers cool and comfortable for close to a decade.

"We have long kaftans, short knee length kaftans, and cover ups at affordable prices," Kerry said. "Our prices start at \$29!"

Today, women are loving kaftans for everyday wear, special occasions, post surgery and travel. They are easy and light to pack and are fabulous for cruising.

"They come in so many patterns and colours, and we have something to suit everybody, from size 12 to 26," she said.

"Our kaftans and cover ups are made of 100% rayon/cotton and they are non see through, so they are incredibly comfortable and don't require ironing.

"Best of all, kaftans can be glammed up for evenings, and we have many styles with in-buff bling. I love kaftans and I know you will love them too!"

www.kerryskaftans.com.au | 0408 788 731

Facebook @kerryskaftans



BAD HABIT RECORDS

Producers and supporters of underground culture, Bad Habit Records in Nambour has become a drawcard for collectors, and musos alike. They specialise in underground, punk and metal but have a broad range of other genres and collectables as well. They buy, sell and trade record collections, CDs, tapes, toys, old band t-shirts, skateboards and vintage clothes and also offer a free appraisal service of record collections, figurines and band merchandise.

80 Howard Street | 0402 556 666 | badhabitrecords.com.au

ONYA BIKE

Local cycling experts

Onya Bike Owner Michael Curry is passionate about all things cycling. After buying the shop three years ago he's now Nambour's go-to guy for all cycling needs. From repairs to bike assembly and sales of guaranteed upcycled bikes, Michael's got you covered.

Whether you're a seasoned cyclist or a weekend warrior, Michael says everyone deserves a quality ride without breaking the bank. Call in and explore the world on two wheels at Onya Bike.

onyabikenambour.com.au

16-22 Currie Street,

Nambour | 0458 612 173



Clock Shop Montville Owners,
Daniel & Holly Hoffman.



CLOCK SHOP MONTVILLE

Experience timeless elegance & craftsmanship

OVER the past 30 years millions of visitors have experienced the wonder and awe of Clock Shop in Montville.

“We have a deep appreciation for handcraft and German clockmaking,” said second generation owner Daniel Hoffman.

Daniel and his wife Holly are dedicated to providing an exquisite collection of timepieces, emphasising both aesthetic and functional value.

The shop, proudly staffed by an incredible team, in addition to Daniel and Holly, offers a diverse array of cuckoo clocks,

grandfather clocks, modern designs, and even bespoke creations.

“Our showroom presents a spectrum of timeless clocks that cater to various tastes. Moreover, we extend our passion through our website and youtube channel, enabling everyone to enjoy these fascinating products.

“Each clock we offer tells a unique story and adds a touch of elegance to any space. We also have a wonderful selection of music boxes and weather stations helping families create lifelong memories and cherished heirlooms.

“We are privileged to travel to Ger-

many and witness the rich history and craftsmanship and we love to share these unique and timeless products.”

Treasures for generations

“We love to help our customers find treasured items to enjoy in their homes, that can bring joy for generations. We deeply appreciate the support from all our customers who help us share the magic of Clock Shop.”

194 Main Street, Montville
07 5442 9409
www.clockshop.com.au





HB BEAUTY PALMWOODS

Discover a haven of beauty & wellness

FOR over six years HB Beauty has been a rejuvenating sanctuary dedicated to natural skincare and beauty treatments in the heart of Palmwoods. Located at 3/10 Little Main Street, the salon offers a pampering experience like no other.

"We specialize in natural skin treatments that not only enhance your skin's radiance but also nourish it from within," said owner Helena Bergman.

The salon has its own signature botanical range, HB Skin, which reflects a commitment to using only the highest standard of professional products.

"With a focus on natural ingredients, our range is designed to bring out your

skin's natural beauty," said Helena. "Our expert therapists can customise the perfect facial treatment for your skin."

Beauty Beyond Skin

While natural skin treatments are their forte, HB Beauty also offers a range of other services from advanced treatments such as LED and Skin Needling to precision waxing.

From lash lifts and brow lamination, lash and brow tinting to massage and blissful facials the skilled technicians ensure that you leave the salon looking and feeling your best.

"The salon is designed to provide you with a serene and tranquil environment

where you can escape from the hustle and bustle of daily life. Relaxation and rejuvenation are at the heart of what we do," Helena said.

"Our dedicated professionals are passionate about helping you look and feel your best.

"With years of experience and a commitment to excellence, we take pride in being your trusted beauty partner. When you step through the door at HB Beauty, you are the centre of our world."

www.hbbeautypalmwoods.com.au
3/10 Little Main Street Palmwoods
info@hbbeautypalmwoods.com
0491 618 866

PEACHY G HAIR STUDIO

Peachy G Hair Studio is the place to go if you are looking for a specialist in blonde colouring.

"I think it is something you have to have a passion for because it can be quite tricky," said salon owner, Juanita Griffin. "There are so many tones of blonde. A great cut and colour begins with a great consultation and getting it right comes down to being a really good listener."

While Juanita is trained and experienced in all aspects of hair styling and care, she specialises in all types of blinding, including balayage, highlighting, colour correction, colour blending and root shadowing.

"Using the best products is critical if you want healthy, natural looking and low maintenance hair," Juanita said.

"I use cleaner, greener, low toxin, professional hair care products and I make a point of using Australian owned hair care products."

Juanita also specialises in updo's and styling for weddings and formals. "At the end of the day, beautiful, healthy hair never goes out of style!"

4/23 Lowe Street Nambour | 0448 722 672
@peachyhairstudio



UPTOWN HAIR STUDIO

Uptown Hair Studio is a multi-award winning boutique hair studio in Currie Street in Nambour.

The Studio was established in 1999 by Rhonda Billett, with a focus on personalised service. “We are stockists of the luxurious Goldwell hair colour range that focus on shine, colour brilliance and the condition of the hair,” said Rhonda. “The Goldwell colour system also has a new Zero Ammonia free range to cater for the most sensitive skin and scalps.”

The team attends training regularly to keep their skills up to date and to stay on top of new season trends.

Professional Service Quality Products

“If you are looking for something new, just ask us for our professional advice on what is best for your hair and what hair products are best suited to you, your lifestyle and your hair,” Rhonda said.

The studio also stocks GHD hair styling tools and straighteners, as well as other quality brands like Eleven Australia, LaBang Body, The Fox Tan, Kerasilk, Goldwell and KMS.

147 Currie Street | 5441 2420 | www.uptownhair.com.au



The Uptown team includes Rhonda, second from left.

GOOD HEALTH



HINTERLAND PHYSIO

New Physio Group extends service reach

HINTERLAND Physio Group – formerly Palmwoods Physio – has marked an exciting milestone with the launch of a new practice in beautiful Woombye.

Behind the expansion lies a commitment to delivering exceptional care to more people, across more locations.

The Hinterland Physio Group now has four clinic locations across Palmwoods, Woombye, Kenilworth and Kilkivan.

“We thought it was time for a name change to represent our expanded service areas and to better reflect our clinic values,” said Director Bill Hinds. “We are the same great team, with the mission of providing our communities with personalised, quality care - just in more places.”

The practice provides treatment to

patients of all ages. “We treat muscle/joint injuries, back and neck pain, headaches, sporting injuries, disability and neurological patients and support post-operative rehabilitation. We also provide home visits for those unable to reach the clinic.”

You will receive ‘hands on treatment’ based on an accurate diagnosis of your condition, education, and a tailored exercise program specific to helping you achieve your goals.

“We embrace a comprehensive approach to physio, liaising with other medical specialists to ensure the best outcome,” said Bill.

Hinterland Physio Group prides itself on being a part of the communities it works within. “We understand the importance of community. Across all our loca-

tions, we strive to get to know the locals, and give back however we can such as fundraising, sponsorship, participating in local events and local networking. We really do feel so grateful to be a part of these communities.”

To make a booking or find out more, either call one of the numbers below, or simply book online at the website.

No referral is required to make a booking. “We look forward to seeing you soon,” said Bill.

www.hinterlandphysiogroup.com.au

5478 8500 or 5442 1619

5/12 Hill Street Palmwoods

6 Blackall Street Woombye

welcome@hinterlandphysiogroup.com.au

WILSON FITZPATRICK FAMILY OPTOMETRISTS

Since 1984, Wilson Fitzpatrick Family Optometrists has been looking after their client's vision and ocular health, and building people-centred, long term relationships.

"We are independently owned, so we are free to stock and recommend products we believe in as well as provide eye care uniquely tailored to each individual's needs.

Ours is an holistic approach to optometry and we consider the whole person," said owner Sarah Wilson.

"This style of practice allows us to really get to know our clients, and I think the best aspect of this work is that we can build such great rapport and relationships with our clients."

The practice has a lens lab onsite which means that most repairs and lens fittings are completed in-house, ensuring a faster turn around, and the opportunity for same-day preparation for single vision glasses.

"Of the five senses, in my opinion, sight is the most important in terms of a person's independence," said Sarah.

"It is also something that you can't check for yourself and that is why it is important to have your eyes tested because many issues are quite easily corrected."

40 Howard Street, Nambour
5441 2277
fitzpatrickoptometrists.com.au/nambour



Owner Sarah Wilson.



MOOLOOLAH MASSAGE & BOWEN THERAPY

Bowen Therapy is a gentle holistic treatment that can provide fast and effective relief with long lasting benefits for people of any age, including infants to the elderly.

"Bowen Therapy involves sequences of small movements at varying pressures, each at a specific site on the body," said therapist Di Rantall, *pictured*.

People are often surprised at how pleasant the treatment is because we use light, cross-fibre movements over muscle, tendons, or ligaments with no forceful pressure. We can basically work the whole body without having to touch

everywhere like we do when massaging," she said. "Painful backs, shoulders, necks, knees, jaw problems, headaches and migraines, reflux, and colic can all be treated effectively with Bowen therapy, and it is a wonderful way to treat whiplash injuries."

Di is a specialist when it comes to treating hormonal issues and works with her clients to bring relief from period pain and regularity, endometriosis, menopause, and bladder issues can also benefit.

14 Nicolle Court, Mooloolah Valley | 0408 593 304

BODY HEIGHTS REMEDIAL MASSAGE

Body Heights Remedial Massage is the first stop in your holistic wellbeing journey.

Jen's nurturing treatments deliver a wealth of benefits that extend beyond relaxation, providing a complete approach to your healing and health.

A wide range of remedial treatments are available including dry needling and infra-red sauna.

Jen's purposeful approach starts with understanding your challenges to create an effective and unique treatment.

As an avid hiker she has a strong connection with nature and deeply understands the

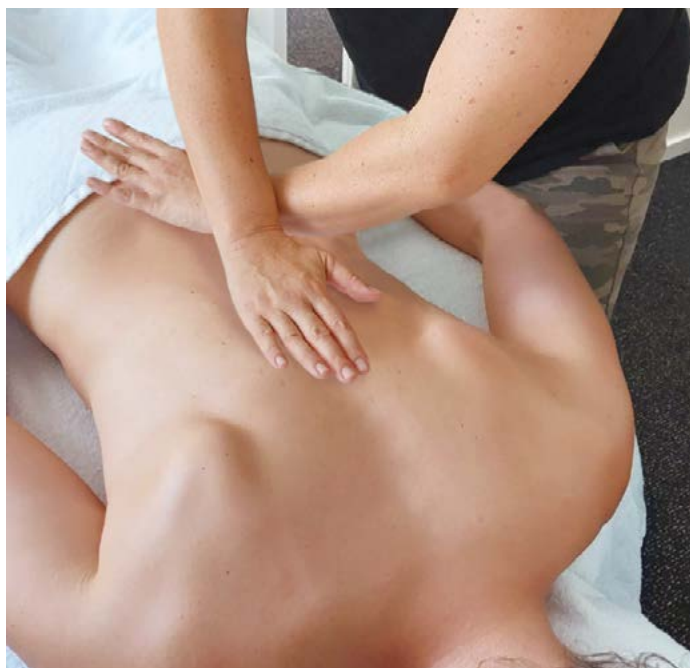
need to optimise mobility, longevity, balance and resilience.

This connection manifests in Jen's massage practice and her newly created multi-day hiking program that covers outdoor skills, safety, navigation and the physical preparation needed to become a successful hiker.

Jen's healing treatments will envelop your mind and body and her hiking program will help build a deeper connection between you and nature.

Calm your mind and elevate your body.

bodyheights.com
24 Queen Street, Nambour





Dr Joseph Hollywood (BDS), centre.

BLACKALL TERRACE DENTAL

Clinical excellence & individualised care in Nambour

TAKING care of your dental health should be a priority, but finding the right dentist on the Sunshine Coast that understands your needs can be a challenge.

Based in the health-hub district of Nambour, Blackall Terrace Dental provides high-quality dentistry for patients across Nambour, Bli Bli, Rosemount, Woombye, Mapleton, Montville and the Sunshine Coast.

Led by Dr Joseph Hollywood (BDS), the commitment to individualised care has earned Blackall Terrace Dental a reputation for excellence.

And word is obviously spreading. It has experienced remarkable growth, with many new patients travelling from across the Sunshine Coast, hinterland and further afield, which meant having to expand their team.

Growing Satisfaction

"I view our growing list of satisfied patients as a testament to the exceptional care and service we provide," said Dr. Hollywood, who worked as an associate dentist at the practice for a number of years, before taking over in 2021.

"Our key values are at the heart of everything we do.

"The focus on clinical excellence and individualised care ensures we provide some of the most thorough and comprehensive dentistry available, whilst dedicating the time to each patient.

"This level of dental care empowers patients with control over their oral health, allowing them to make informed decisions about how to achieve dental fitness."

Growing Team

Dr. Hollywood welcomed an additional dentist to the team earlier in the year and will be welcoming another, at the start of next year.

"We have brought on team members whose professional values align perfectly with Blackall Terrace Dental's patient-centred approach."

"We provide positive dental experiences for patients of all ages, and tailor treatments to their specific needs.

"With treatments ranging from cosmetic dentistry, restorative dentistry and through to full mouth rehabilitation, we consider tooth function, form, aesthetics and health in every treatment we provide," said Dr. Hollywood.

"Our team utilizes modern dental technology and we stay up-to-date with the latest advancements in dentistry to ensure that patients receive the best care possible," said Dr. Hollywood.

With their commitment to clinical excellence and personalised care for



every patient, Blackall Terrace Dental has become the top-rated dentist to visit for your dental care in Nambour.

Making Dentistry Affordable

Blackall Terrace Dental accept all major health funds and can apply rebate on-the-day through HICAPS, allowing you to lower your costs instantly.

They also provide payment plans that help spread the cost of dental

care for up to twelve months, completely interest-free.

Be Seen Quickly When You Need it Most

The team also understand the importance of being seen quickly when faced with a dental emergency. They offer same-day appointments for toothaches, fractures, abscesses, and other urgent needs for when you need a dentist most.

Ready For a Happy, Healthy Smile?

Book online in less than one minute, or speak to the friendly team today!

www.blackallterrace dental.com.au
(07) 5441 3583
87 Blackall Terrace, Nambour



Owner, Linda Goggan

SACRED BODY

Initiate True Well-Being

THE experienced therapists at Sacred Body are ready to support you to take steps toward wellness and rejuvenation through specialized bodywork therapies and beauty rituals.

Founded in 2017 by Linda Goggan, a qualified Remedial Massage Therapist, Nutritional Advisor, Facialist, and Energetic Medicine Practitioner, Sacred Body has grown rapidly by offering therapeutic body, facial, and general wellness treatments that support both body and Soul.

“In my 17 years of practice in the wellness industry, I have found that the clients drawn to me have overwhelmingly been those that experience tension and general unwellness caused by anxiety, depression, and exhaustion,” Linda said.

“So most of my bodywork techniques have been tailored to support this type of client. Those whose regular self-care practices include massage, energetic healing, and skin care support through personalized facials and beauty rituals begin to feel amazing in their bodies and also supported with their overall outlook on life.

This allows for a reconnection to something powerful within.

“We are more than just your run-of-the-mill massage clinic or beauty salon,” said Linda.

“What my team offers is unique, powerful and timeless, a full-being experience that transcends what many of our clients have previously experienced. As therapists, we walk our talk and live what we offer in our work. And that is felt by our clients on levels they often can’t explain.

“We very commonly find that the people who are drawn to our clinic are those who are ready to understand themselves at a deeper level, and establish new habits of self care that support this process.

It is such a joy to ‘walk people home’ to themselves.”

Since moving to their current location in Montville in 2022, the luxurious Sacred Body clinic has become well known for their couple’s treatments.

“With our purpose-built couple’s treatment room, we have been able to service an extraordinary number of couples that are either having a romantic getaway or celebrating an anniversary.

We have also been able to offer bespoke treatments for corporate events and team-

building weekends with our multi-room clinic,” she said.

Sacred Body stocks their own branded quality skincare range and cosmeceuticals.

Many of the products in the range are hand-made by Linda using formulas derived from her herbalism studies.

These natural, chemical-free products are used in all beauty treatments and they are also available for purchase in the clinic or online.

“Our team is deeply committed to offering truly restorative treatments and we are forever students of our craft, offering our clients a premium experience in supporting health, wellness and rejuvenation with a little hint of hinterland day spa,” Linda said.

Sacred Body offers a wide range of treatments which include Massage (Remedial, Relaxation, Esoteric, Oncology, Hot Stone, Couples), Beauty (Facials, Body Scrub/wraps, Foot treatments), Esoteric Healing and Far Infrared Sauna and Private Mineral bath.

4/130 Main Street, MONTVILLE
0422 852 899
www.sacredbody.com.au

WOOMBYE CHIROPRACTIC

Your path to pain relief

Are you tired of living with persistent back pain, neck pain, headaches or sciatica? Woombye Chiropractic has been restoring well-being through gentle chiropractic care for over 30 years.

Now Dr Allan Lambert has been joined by his son Ashley at the practice he established in 1986.

"We use a technique called Sacro-Occipital Technique," said Dr Ashley.

"SOT is a comprehensive, gentle and innovative technique which aims to treat the root cause of issues."

The practice uses a variety of techniques adapted from the duo's extensive experience.

"Our focus is on effective, low-force treatment strategies suitable for infants through to the elderly," said Dr Allan.

"Normally most patients have significant improvement within a few visits and are vastly improved within a month."

"A range of functional, structural or pathological issues can compromise neural integrity, and may influence organ system function and general health."

That's where gentle manipulation can help."

**25 Blackall Street, Woombye
5442 2144
www.woombyechiro.com.au**



Dr Ashley Lambert & Dr Allan Lambert.



INTEGRATED HEALING THERAPIES

The Bowen Therapy path to freedom from pain

Many people live with persistent pain, restricted mobility or the constant burden of stress and anxiety.

But according to Leanne Sippel, from Integrated Healing Therapies, it's time to break free from these limitations and "embrace a life of wellness".

"Whether it's chronic headaches, muscle tightness, or the overwhelming weight of anxiety, Bowen therapy addresses the root cause of these issues," said Leanne.

"The aim is to gently guide your body towards healing and restoration so you can say goodbye to limitations and reclaim your joy."

"All my treatments are personal-

ised specific to your or your family's needs."

Leanne invites you to experience Bowen Therapy at Integrated Healing Therapies within Woombye Chiropractic.

Bowen Therapy is a hands-on approach that stimulates the body's ability to heal itself, offering a non-invasive way to address various ailments. Leanne has a Bachelor of Health Science (HOM), Advanced Diploma Bowen Therapy and is currently studying Biodynamic Craniosacral Therapy. Phone Leanne to book an appointment.

**0438 684 705
Woombye**

SHUNYATA ESSENCE HEALING

With more than 10 years experience as a Reiki Master Practitioner, Sofia offers her Reiki treatments with wholehearted dedication and professional conduct to best assist her clients in the improvement of their minds and bodies.

Her professional standards are also imprinted by the seven years she worked at a National Reiki Membership Organisation.

Reiki treatments are gentle yet profound and can support in managing stress, boosting immune system, recovering from physical, mental and emotional conditions.

**Sofia works from Woombye
Chiropractic Clinic
0499 308 586
www.shunyata-essence-
healing.com/reiki-2**



CLASSICAL YOGA IN KUREELPA

Tyag and Yamuna, pictured, share 50 years of practising and teaching Yoga between them. They live a Yogic and organic lifestyle and love to share their experience with the Community.

Yoga in Daily Life is an authentic style of Yoga suitable for all ages and levels of experience. And it's reasonably priced.

Regular workshops & Satsang/Kirtan are available. Also, enquire about Kinesiology and Astrology.

**Yoga classes Mondays 6pm & Friday 9am
0422 268 975 | 07 5441 7566**

SEE BETTER, SEE US!

A vision of excellence at Hammond Optometry

If there's one thing that sets Hammond Optometry apart, it's the fusion of fashion-forward eyewear and experience in eye care.

For over three decades Stephen and Deborah Hammond, *pictured*, have been the guiding force behind their boutique practice, improving the way their clients view the world and how the world sees them. "Eyeglasses are far more than functional – they are a central feature of the face.

That's why we believe your frames are your ultimate fashion accessory.

Our exclusive range of fashion eyewear is handpicked with quality and design in mind.

Our clients like to embrace their

unique style while receiving expert care from our professional team, all conveniently located in Nambour," said Deborah.

Service and care are the other priority in our practice, according to Stephen.

"We strive to provide the best clinical care to our patients, using the latest in optical equipment technology" he said.

The team at Hammond Optometry can help with the best advice on your eye care, choosing the correct eyewear and all other optometry related services.

www.hammondoptometry.com.au
38 Lowe Street, Nambour
5476 2333



Deborah & Stephen Hammond

WHISTLING KITE HEALING THERAPIES

Abbey Boland (Dip RM, Dip BT, BSN) combines her nursing background with proven healing and massage modalities to provide a pathway back to wellness.

Abbey calls on her experience in Remedial Massage, Bowen Therapy, Access Consciousness Facilitation and more to unlock limitation and ease pain.

"I am here to help you reconnect with your true self by aligning your mind and body," she says. "Addressing the root cause of your issues rather than merely treating the symptoms is essential. My clients experience relief from physical and emotional pain, fostering true healing and growth." Gift vouchers available for special occasions. Book online.



www.whistlingkitehealingtherapies.com | 0401 108 126



THE CHI HUB NAMBOUR

The Chi Hub Wellness Centre Nambour is a conscious collective of natural and alternative healing therapies, classes, workshops & events. "Therapies are available from Monday to Saturday include Acupuncture & TCM, Massage, Bodywork, Coaching & Holistic Counselling, Psychotherapy, Kinesiology, Energy Healing, Art Therapy, Ayurveda, Women's Health, Yoga and more," said Owner, Teagan Banyan. The centre has five treatment rooms and an event space which are available for hire.

54-56 Blackall Terrace, Nambour | 0410 244 722
hello@thechihub.com.au | www.thechihub.com.au/nambour

BOTTOMS UP COLONICS

Health & happiness from within

Looking to cleanse your colon in a healthy and holistic way? Bottoms Up Colonics Nambour are certified in the Rojas technique – a gentle, deeply hydrating, closed colonic technique.

"We prioritise relaxation and rejuvenation through the healing powers of water medicine and natural products in a spa-like atmosphere," said clinic owner Karen Johnston.

Colonic hydrotherapy supports your elimination pathways leading towards optimal health and physical wellbeing. "It helps to detoxify the body by gently flushing out wastes, toxins and harmful bacteria from the colon," said Karen.

"This can promote better digestion, improved nutrient absorption and enhance overall well being."

Passionate about digestive health

and wellness, Bottoms Up Colonics offer tailored cleansing programs, parasite, candida, biofilm and Blasto protocols, and include nutritional and herbal infusions in every session.

"We are committed to supporting your wellness goals, whether you are seeking pain relief, or seeking balance, vitality and wellness in your life." Karen invites you to include Colonics in your rejuvenation, ageing-well and preventative care protocols.

Located opposite Nambour Hospital, with wheelchair access and private parking. Book online or call.

www.bottomsupcolonics.com.au/store-locator/nambour-qld/
Shop 4, 2 Mapleton Road Nambour
5220 8859



Clinic owner Karen Johnston, left, and Kim Koroheke.



The team includes, from left, Ellen Hodges, Jarrod McGuinness, Jay Lewis, Will O'Hara and Martine Wapp. Inset right: Allied Health Therapist Gabrielle Riach.

ELITE FOOT CARE WOOMBYE

Stay ahead of foot problems. We'll help you avoid pain

FOOT pain, discomfort and limited mobility can often be traced back to podiatry-related issues, and the solutions can be remarkably simple. Elite Foot Care, a podiatry clinic established in 2020 by brothers Jay Lewis and Willow O'Hara, provides leading-edge services from state-of-the-art clinics in Woombye and Sippy Downs. Elite Foot Care is on a mission to revolutionize the way people experience podiatry care.

"We are excited about podiatry and the ways it can help our patients to enjoy a better quality of life," Jay said.

"So many people are unaware of the issues that can cause pain, discomfort and reduced mobility and that have their root cause in podiatry. And sometimes the 'fix' is extremely simple."

Jay and Willow have put together a team of professionals who share the same values of excellence, compassion, and community involvement.

"We consider ourselves to be more than just a healthcare facility," explained Willow. "Our practice is a community. It is a place where patients discover not only relief for their foot ailments but also a sense of belonging."

"Our clinics have been designed to be warm and welcoming so that patients are not merely recipients of medical services, but active participants in their own healthcare journey."

Elite Foot Care has blended innovation and care, leveraging technology to enhance patient experiences and streamline processes.

Elite Foot Care offers treatment for:

- Heel pain
- Foot leg pain
- Hip and knee pain
- Sports injuries
- Orthotics
- Ingrown toenails
- Nail fungus
- Corns and calluses
- Diabetic assessments
- Kids Podiatry

"We accept patients from the NDIS and DVA, with Workcover related issues, and we can provide Medicare and Private Health insurance rebates," Jay said.

"What many people don't realise is that you do not need a Doctor referral to make an appointment with us."

Supportive orthotics & footwear

Elite Foot Care have a comprehensive range of footwear and manufactures fully custom orthotics on-site.

"We really want people to know that they don't have to let foot and lower limb concerns cause chronic pain or hold them back from the activities they love," said Jay.

"We can help you move towards healthier, happier feet and we're here to provide support and guidance every step of the way."

To book your appointment with Elite Foot Care on 07 5328 3588.

**5328 3588 | www.elitefootcare.com.au
4/40 Wilson Avenue, Woombye**



Jay Lewis treats a patient.



Elite can mould custom orthotics on-site.



Elite offers comprehensive biomechanical assessment, including gait analysis.

FRIDELLE STANYER

Animal whisperer, intuitive life coach, Reiki master & clairvoyant reader

With decades of experience as an Intuitive Life Coach, Fridelle says no subject is tabu for her. "I inspire my clients to regain inner happiness in their heart and soul through any of my affordable modalities, and I assist them in making their aspirations and dreams a reality, if they so desire," Fridelle said.

Fridelle says her own spiritual path started off slowly but after a few years of learning, inner work, growth and awakening, it's been like "a never-ending whirlwind".

"I love it," she said. "Being an energy healer, or should I better say facilitator, along with being a Reiki Master, allows me to help bring people in alignment with themselves, if they are open and willing to allow that positive change to happen."

Fridelle also does clairvoyant readings from a range of cards. "Clairvoyant readings are often the precursor of a guidance around how to overcome your present challenges," she said. "This allows you to move forward

with your head held high and an open mind and heart to appreciate life to the fullest, despite the seemingly insurmountable obstacles you may be experiencing," she said.

Fridelle helps clients conquer their fearful mindsets and take the first step in the right direction of liberation from perceived limitations.

"Once your beautiful soul awakens to its highest potential, you become invincible and your Light starts shining far and wide.

"Believe in yourself, have faith and trust but, most of all, show gratitude for everything life bestows on you, even what you might perceive as insurmountable obstacles.

"It is these difficult times that catapult us to higher awakening. The light at the end of the tunnel will be far brighter than you ever imagined."

0412 846 995

fridelle@innerharmony.net.au



SUNSHINE COAST AUDIOLOGY

Discover clearer hearing

SUNSHINE Coast Audiology was established by Anita Burgess and Emryn Maclachlan and is conveniently located in Sippy Downs, with easy access from both the Bruce Highway and the Sunshine motorway.

Having previously worked together in Nambour, Anita and Emryn were keen to open an Audiology clinic that was locally owned and independent of hearing aid manufacturers.

Being independent enables them to provide personalised service and give patients the time they need to fully understand their results and consider their options in an unrushed environment which in turn leads to greater patient satisfaction and better outcomes.

Anita and Emryn are both fully qualified and university-trained audiologists and have over 15 years of combined experience across a number of audiology settings.

Sunshine Coast Audiology is an accredited provider of the Government's Hearing Services Program, which can provide free and subsidised hearing tests and hearing aids (when necessary) for eligible veterans and pensioners.

Privately funded patients are also welcome and being independent allows Anita and Emryn to make device recommendations that best fit the needs of the patient and their budget as they are not tied to recommending a particular brand of hearing aid.

Sunshine Coast Audiology are dedicated to providing you with the highest quality care, from comprehensive diagnostic assessments for adults and school-aged children to hearing aid assessment, fitting, adjustment, and repairs. They also offer tinnitus management, ear wax removal (via irrigation, micro-suction or manual removal) and can now offer Cochlear Implant and Bone Conduction implant assessments, switch-on and programming.

Anita and Emryn pride themselves on offering the best client care and service on the Sunshine Coast. You can contact Anita and Emryn by phone or website.

Shop 10, 1 Scholars Drive, Sippy Downs
5378 2226

info@sunshinecoastaudiology.com.au





Abby Begeta has a Medical Science degree, and a Law degree.

SUPPORTING YOUR WELL-BEING JOURNEY

With intravenous infusion of nutrients

ONGOING struggles with chronic health issues 15 years ago was the impetus for Abby Begeta's immersion in medical and scientific research and the subsequent implementation of more integrative and holistic practices to improve her own health.

"In 2008 I contracted Swine Flu which wreaked havoc with my health and I became extremely sick". Abby explained. "I had no energy and was sleeping up to 18 hours a day. My Doctors could not work out how to treat me".

"It turned out that I had had a Chronic Fatigue Syndrome. Given that there was no commonly recognised treatments for CFS, I knew I had to take responsibility for my own health and find ways to help myself."

Abby holds both a Science degree, and a Law degree. She is a registered nurse, and has practised in different areas of law.

"I know it seems an unlikely combination but my studies have very finely honed my skills as a researcher, and this is critical when it comes to looking at any health challenges, particularly chronic disease," Abby said.

Abby's research led her to the work of acclaimed practitioners in the world-renowned Riordan Clinic (US), as well as Dr Henning Sauppe at Arcadia Praxiklinik, Germany and other doctors worldwide.

"I have been fortunate to have been able to learn from some incredible professionals who have taught me so much about both medical research and health," she said.

Abby's journey led her to IV infusions of nutrients, and from that point, her own health began to improve exponentially.

"I am a huge believer in taking an integrative and holistic approach to health," Abby said.

"This includes factors such as nutrition, lifestyle, sleep and exercise and I have found that for many people, we can combine these strategies with conventional medicine and achieve fantastic outcomes.

"Every human body is absolutely unique and one size does not fit all," she said.

"If a person is experiencing poor digestive health, it really compromises their ability to absorb nutrients taken orally.

"Nutrients that are delivered intravenously are absorbed more effectively as they bypass digestive system.

"Plus, they are individually tailored based on factors that are as unique as you are. It is about delivering precisely what your body needs.

"While I do not diagnose diseases, I am happy to work with your Doctor to achieve the best outcome for you," Abby said. "My process involves a thorough assessment of your personal and medical history, your family medical history, conditions that are contraindicated, and lifestyle factors such as diet, sleep and activity levels.

"I also give people post treatment general information about their self care and I can work with you in your own home.

"It is so rewarding to work with people who want to be in an optimal state and are ready to take positive actions to improve their health and wellbeing."

0413 618 725

abbysinfusions@gmail.com

Instagram: @abbysinfusions

ABN 45 439 924 117



Principal Gary De Paoli, left, bought Day & Grimes from Ian Black, and now has offices in Nambour & Woombye. Mr Black runs the commercial side of Century 21 Nambour.

CENTURY 21 LIVING LOCAL

We'll help you find a new place to call home
around Nambour & Woombye

CENTURY 21 Living Local Nambour & Woombye Principal Gary De Paoli understands there are times when people looking to buy or sell can feel stressed and confused.

That's why he and the team offer valuable and honest advice so that you can navigate the best path through the process.

"We know the marketplace, the buyers, sellers and neighbourhoods, but most importantly we know how to put our clients' needs first," said Gary.

That local knowledge is supported by Century 21's national network of state-of-the-art sales tools and technology to make the journey easier.

"At Century 21, you're in control of your sale or purchase and our job is to help you get the best result possible," said Gary.

The Woombye office was named a "Centurion Office" in 2021 in recognition of it being in the top two percent of Century 21 offices in the world. Gary is keen to transfer that success to the Nambour office.

Gary recently expanded to Nambour, after buying renowned local agent Ian

Black's Day & Grimes agency and has now charged Ian with expanding the commercial arm of the business.

"We're going to be more active in the commercial realm and we want to make people aware that this opportunity exists to deal with truly local commercial agents with local knowledge," said Ian.

The Nambour and Woombye offices are operated by locals who have lived and worked in local real estate for nearly 20 years and are experts in the ever popular, ever growing townships of the hinterland.

Between them, the friendly and professional Principal Gary De Paoli and his team have a wealth of experience and knowledge in real estate and property management.

"When you pair this local knowledge with the world's largest real estate group, Century 21, you have the perfect partnership to get your property the increased reach and exposure in the market that is needed to sell your property for the best possible price," said Gary.

Gary and his team are also highly skilled negotiators and passionate about delivering

personalised, down-to-earth service with attention to detail.

From residential to acreage

From residential to acreage living, they cover Nambour and Woombye and the beautiful surrounding suburbs of Palmwoods, Yandina, West Woombye, Dulong, Hunchy, Diddilbah, Kiels Mountain and Rosemount.

The agency sponsors several local sporting clubs and schools.

"We love our community and are excited to support them whenever we can," said Gary.

"If you are interested in buying, selling or renting, take a moment to contact our office today on 07 5442 1888. We would love to discuss your real estate needs."

Shop 2/18 Blackall Street Woombye
www.woombye.century21.com.au
5442 1888

admin@c21livinglocal.com.au
52-64 Currie Street Nambour
5441 3366

info@c21livinglocal.com.au



RE/MAX PROPERTY SALES

Nambour's largest & leading real estate agency.

THE road to buying or selling a property is often stressful and paved with challenges so it's important to find the right partner to guide you. As the largest and leading agency in Nambour RE/MAX Property Sales are ready to help you on that journey.

Under the leadership of Director Tristan Brown the agency has grown into a team of 21 agents and staff to help buyers and sellers navigate the nuances of residential, land, acreage sales and property management. "Nambour and hinterland offers so much value at the moment," Tristan said.

"Buyers are continuing to recognize value in comparison to neighbouring suburbs. People are commenting on the excitement and fresh energy in Nambour. It's an area that is on the rise and is full of potential, and we're here to make the journey smoother for everyone involved.

"The area offers such a relaxed lifestyle, it's only 20 minutes to the beach, 10 minutes to the hinterland and represents great value for buyers.

"We have a welcoming team of very experienced sales agents. We offer a professional and approachable real estate service dealing in everything from residential house and unit sales, vacant land (including off the plan developments), house and land packages, vacant acreage land and lifestyle acreage properties."

Tristan said he was proud to lead a team that had grown into an award-winning and

record-breaking force in Nambour.

"I honestly couldn't be happier," Tristan said. "It has been a very big and busy few years. We have some tremendous agents, who have been achieving great things".

"My administration team is second to none and our Property Management department – which was started two years ago when I became the owner – have been knocking it out of the park.

"Most importantly, I really enjoy walking through the doors every day, and as an owner and an agent what more could you ask for than that? It is a tremendous culture and wonderful atmosphere."

Growth, reputation & teamwork

In an industry where reputation meant everything Tristan says he is humbled by the quality of clients and agents his agency attracts.

"Our reputation is the cornerstone of our business," he said.

"Watching our team grow has been a journey like no other. I'm incredibly proud of what we've achieved and grateful to our clients for showing such faith in us. It's essential to have a team that can meet our customers' real estate needs, and we have exactly that."

While fostering growth, Tristan also prioritises nurturing his team by providing ongoing training and mentoring opportunities. "Professional development is key to our success".

RE/MAX Nambour is proud to support our local community and is a major sponsor of Nambour Crushers Rugby League, Nambour Heights Bowls Club, Woombye Snakes Soccer Club, The Daniel Morcombe Foundation and many other local organisations.

What's Your Home Worth? Median Hinterland Home Prices

- Nambour \$656,200
- Burnside \$760,000
- Coes Creek \$742,500
- Palmwoods \$830,000
- Rosemount \$1,112,500
- Woombye \$753,000
- Yandina \$850,000

Why sell with RE/MAX a quick guide

Selling a property with RE/MAX, a global real estate titan, can offer homeowners a plethora of benefits:

- Global Reach
- Experienced Agents
- Pulse on Local Market
- Dynamic Marketing
- Trusted Brand
- Ace Negotiators
- Unwavering Support
- Tailored Marketing
- Tech-forward ethos.

www.remaxpropertysales.com.au
50 Lowe Street, NAMBOUR
5470 7000

David Gaskin, Century 21.

'MORE THAN THE SALE'

Century 21 Living Local agent's approach to real estate

ASK David Gaskin what makes a great real estate agent and he will tell you it's much more than just making sales.

"Apart from integrity and honesty, it's all about the experience," says the Woombye Century 21 Living Local agent, *pictured*. "Anyone can give the spiel but it's about building relationships with people and making sure they don't feel like just another number."

A true local, David has lived in Woombye since he was seven and knows the area like the back of his hand. With 25 years of retail experience under his belt including running a family business for many years, David's love of people and his ability to build a great rapport with his clients is at the heart of why he chose a career in Real

Estate.

Well-known among his peers as an affable and enthusiastic character, he is passionate about good old-fashioned customer service and goes well above and beyond to ensure his clients receive top class service each and every time.

"I try to take the stress away as much as possible," he said. "Sometimes that might mean mowing the lawn or picking up the palm fronds at the property, but that's all part of being a great Agent and getting the best results."

While it's no secret that buying or selling a property can be a highly emotional time for some people, David says recognising and respecting these emotions is the key to a great client relationship built on genuine care and trust.

"It's probably the biggest purchase they will ever make and there are lots of emotions ... they might be selling their long-term family home where they raised their children and have a lifetime of memories."

When he is not looking after his clients, David is supporting the community and is currently the Vice President of The Woombye Snakes Football Club.

David is also a proud father of two, daughter Paris has just started her career as a mid-wife and son Sebastian is finishing year 12 and is looking forward to a future in the film and TV industry.

david@c21livinglocal.com.au
0405 258 765

Shop 2/18 Blackall Street Woombye
52-64 Currie Street Nambour

THE HINTERLAND REAL ESTATE TEAM FROM MCGRATH

As the local Hinterland team from McGrath Estate Agents, Shaun Hammill and Kirsty Shakespeare, *pictured*, provide a personal approach to selling your home with the backing of a renowned national real estate brand.

Shaun is a former Chevallum turf farmer with more than 15 years' experience selling in the hinterland. Kirsty is a marketing specialist who has been raising her family in Palmwoods since 2008.

Together, they offer a strong connection to the community coupled with McGrath's bespoke approach to selling.

"When you choose to sell with us, you are choosing a local team with the support and reach of one of Australia's and the Sunshine Coast's most renowned real estate brands," said Shaun.

Giveback initiative

Shaun and Kirsty are proud to show their support through the McGrath Community Giveback initiative.

Simply sell your property with Shaun and Kirsty, and they will give \$500 to your chosen local sporting club, school or not-for-profit organisation.

If you're considering a move take advantage of this opportunity to support the hinterland community.

"Our aim is to help locals achieve the best possible result and support our community all at the same time," said Kirsty.

Shaun Hammill 0413 310 445
shaunhammill@mcgrath.com.au
Kirsty Shakespeare 0408 432 327
kirstyshakespeare@mcgrath.com.au



Kirsty & Shaun.



VB REAL ESTATE

The boutique hinterland agency

WITH more than 30 years of experience in real estate, the building industry and in finance, Vanessa Brunton of VB Real Estate is well placed to help people navigate the property market.

Vanessa has been selling real estate on the Sunshine Coast and Hinterland for over 15 years and recently made the decision to start her own boutique REIQ-accredited agency, VB Real Estate, with her daughter Cheyne, *also pictured, above*.

"I like to make the process of selling your home super easy, and I love living and working in such an awesome community," Vanessa said.

VB Real Estate continues to support the Wildlife Carers in the Sunshine Coast

Hinterland by donating \$100 for every property sold.

Vanessa likes to provide peace of mind and up-to-date information to guide clients through the sales process. Below are just a few of Vanessa's many verified *Rate My Agent* reviews.

Rate My Agent Reviews

"Vanessa was amazing, I would recommend her to everyone, she is easy to get on with and extremely helpful, can't recommend her highly enough," said one happy home-seller.

"Vanessa has gone above and beyond to help myself and my family," said another. "She did a fabulous job selling my home and making the process easy. Vanessa

knows the market well and was always a phone call away, she is an honest Real Estate Agent. Vanessa is an agent with wings."

A third said Vanessa was "like a breath of fresh air in real estate". "Vanessa was an absolute pleasure to deal with during our sale. Vanessa went the extra mile, she worked super hard to get our place sold.

"Her communication is excellent and she kept us very well informed. Vanessa is an honest trustworthy agent that we had total confidence in. I recommend her 100 percent."

www.vbrealstate.com.au
0467 448 850
vanessa@vbrealstate.com.au



Roger Loughnan & Monica McLaren

ROGER LOUGHNAN REAL ESTATE

Roger Loughnan Real Estate is based in Mapleton on the Blackall Range. Located opposite the famous Mapleton Public House, Roger Loughnan and Monica McLaren have been selling properties along the Range and into the Mary Valley for more than 25 years.

"We handle residential, commercial and rural real estate," said Roger.

"Our agency has served property and business owners and we have established some wonderful relationships along the way."

The entire team is committed to the first rule of ethics, 'Primum Non Nocere' or Do No Harm.

"Our agency strives for the highest possible ethical standards in Real Estate and aims for excellent sale prices with fairness and

honesty to all parties," he said.

"With over half a billion dollars in gross sales involving close to 1000 transactions, our knowledge of the district regarding property is extremely comprehensive.

"Our agency has been privileged to act for the owners of residential homes and vacant land, large grazing properties and feedlots, accommodation properties, commercial properties, small businesses, hobby farms and small acreages.

"If you would like a free appraisal or if we can help in any way, please give us a call."

rogerloughnanrealestate.com.au
Shop 2 Cnr Post Office Road & Obi Obi Road, Mapleton
sales@rlre.com.au | 5478 5288

TERRY HINDS REAL ESTATE

Toni Hinds has been working in the real estate industry for 13 years with a dedication and integrity inspired by her late father, Terry.

Growing up in Nambour and under the guidance of her dad gave Toni formidable insight into the local market and a shining example to follow.

"I am a Nambour Resident for 49 years and passionate about selling in Nambour and surrounding areas.

"I class myself as a boutique agent and I limit my listings so I can focus more on my clients' individual properties.

"Dad was an agent in the area for 38 years before he passed away and taught me everything I know.

In an industry that is tough, competitive and often erratic in nature, Dad was overwhelmingly regarded as a steadfast

man of the highest integrity and principles.

"He instilled in me a respect for honesty and a reliability and treating everyone with professionalism and respect. Sales may come and go but in the end it's your integrity that matters."

Toni is an REIQ Licensed Real Estate Agent and specialises in property sales around the Nambour region. The boutique agency also offers property management services.

"We keep our rentals to a manageable limit so we can achieve the best rental rates for landlords while also seeking responsible and respectful tenants," said Toni.

www.terryhinds.com | 0423 328 138
toni@terryhinds.com



PROFESSIONAL SERVICES

YANDINA ART & FRAMING

Since 1995 Yandina Art & Framing has been a hub for artist supplies and framing. "This part of the coast is a real haven for artists," said owner, Bill Gissane. "And we also enjoy helping our customers to create their own unique and meaningful artworks through restoration and framing.



Yandina Art & Framing have cutting edge equipment and can do custom framing and mirror framing, canvas stretching, embroidery framing, repair and restoration of damaged art, sports memorabilia framing and recently have been appointed by Queensland Medals and More as framers for military medals.

7 Stevens Street Yandina | 5446 8000 | yandinaartframing.com

KARI ARTISAN CELEBRANT

For sparkling weddings and thoughtful funerals, Kari is a sought-after celebrant creating occasions that are meaningful, yet relaxed and inspired.

"I understand that you're seeking a ceremony that's a perfect fit for you, your vibe, your people," Kari said. "I help identify what's important to you, and then create a ceremony that expresses all that and your love."

Kari has a super friendly, yet supportive and professional approach, so that your unique occasion truly reflects life, and celebrates that life.

Wedding couple Emma and Paul were thrilled, "Kari nailed it. Just the right recipe – humour, humility, warmth, respect and occasion – a memorable affair."

www.karicelebrations.com | 0437 714 965



4CP PROMOTIONAL PRODUCTS

Onsite printing, and sometimes while you wait

Wayne Knetter of 4CP Printing is very clever with digital designs, whether you want him to fix up your Canva design or use his 40 years of design experience using the Adobe applications.

Wayne still operates one of the only pad printing machines in the area.

He can print pens, golf balls and various promotional products in-house.

He can print paper or vinyl stickers on a roll, large format signs or posters as well as all paper printing.



5442 3341 | 0414 483 678
wayne@4cp.com.au
www.4cp.com.au

LISA BRERETON, CIVIL MARRIAGE CELEBRANT

Lisa Brereton became a Marriage Celebrant because she just loved weddings.

"I love seeing how happy everyone is," she said. "My goal is simple: to help couples have the best day of their lives."

And she seems to be achieving her goal, based on feedback from couples like Sarah & Craig: "Lisa was the perfect pick for our special day. We loved the emotion she brought to our ceremony but also her chilled and calm nature which we needed as we were both a little nervous."



www.lisabreroncelebrant.com.au | 0409 624 401
lisa@lisabreroncelebrant.com.au

PLACE 360

Urban Planning Consultancy



Place 360 delivers a suite of urban planning consultancy services. Established in 2020 by Grant Palethorpe, a qualified town planner, the name reflects Grant's approach to 'consider a place from all perspectives'. Grant enjoys working closely with the client to explore a site's potential and determine the planning requirements.

"We coordinate the approval process, inform the design team, prepare, lodge, and monitor the DA stages," he said. "We maintain close contact with the client throughout and become an integral part of the process."

Grant draws on his previous career experience as a business banker where his role involved building relationships

with clients to help them realise their goals. "Whether in planning or banking I enjoy helping clients achieve their goals. You really need to appreciate their motivation and vision," Grant said. Understanding the dynamics of property development, lending criteria, cash flows forecast, valuation and project management brings valuable insight to any project. "Being able to appreciate these business issues is a distinct advantage to achieving great planning outcomes," Grant said.

Place 360 also prepares site assessments, a great asset for a property going to market.

www.Place360.com.au | 0435 364 559
grant@place360.com.au

GIGIL DESIGN STUDIO SERVICES

Woombye Design Print and Signs has had a much needed makeover and been reborn as Gigil. New owners Ben Dale and Carlee Ismay got into the print business around 10 years ago, growing their flagship company Development Signs Australia into an industry leader, nationally.

The storefront in Blackall Street Woombye now has an experienced graphic designer on staff, Shayne Smith who is eager to bring all of your ideas to life. Gigil is open now and ready to offer a variety of design studio services. On top of the huge range of printed and promotional material every business always needs.

Branding, signage, brochures, business cards, drop in today!

12 Blackall Street, Woombye
 1300 013 961 | admin@gigil.group



Ben Dale and Carlee Ismay, centre, & the team.

INTERSECT BUSINESS & ACCOUNTS SERVICES

Streamline your accounting

Is managing your business turning into a time-consuming and stressful nightmare? Are you struggling to keep up with the ever-changing landscape of accounting software and cloud-based services?

Intersect helps you navigate the often-complex transition and co-ordination of online business systems, job management and accounts.

"Every business is different," said principal Nathan Major, who is also the President of Woombye Community and Business Association. "So we offer support, maintenance and reporting across multiple software services. I can tailor a solution to meet your business's specific needs, working with you to develop the best solution to enhance your

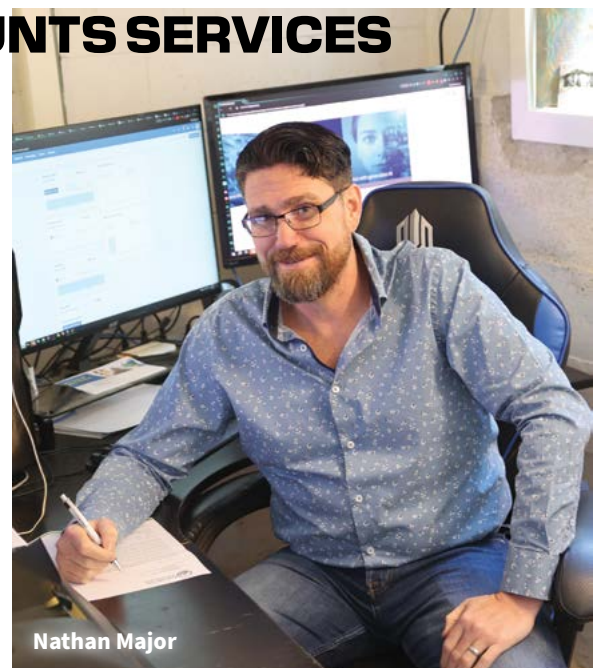
business.

"We help make accounting more accurate, less stressful, and less time consuming than people ever thought possible."

If you want to streamline your accounting, boost productivity, and drive down costs the first step is to schedule a Free Initial Consultation. Contact Nathan via the details below to meet in person or via Zoom or Skype.

Nathan is an AIPM Certified Practising Project Practitioner, a Member of the Institute of Certified Bookkeepers and a BAS Agent (#24729433).

intersect@intbas.au
www.intbas.au
 0481 065 908



Nathan Major

From left, Brent King, Peter Boyce and Al Upton of Butler McDermott Lawyers.



BUTLER McDERMOTT LAWYERS

Your trusted legal partners for over a century

NAVIGATING the intricacies of the legal world demands experience, dedication and unwavering commitment. Backed by over a century of providing legal services to Nambour & hinterland, Butler McDermott Lawyers embodies these qualities.

Led by directors Al Upton and Brent King, and with renowned lawyer Peter Boyce by their side as a consultant, Butler McDermott have built a reputation as the region's premier partners for legal matters ranging from simple consultations to complex litigation.

Importantly, the firm boasts a proven track record of success. Butler McDermott Lawyers has made a significant impact on the community, handling cases that have shaped the region's history.

From the Daniel Morcombe disappearance to the Traveston Dam project, and numerous land resumptions, their influence has been felt far and wide.

From complex multi-million-dollar deals to supporting individuals with their everyday legal concerns, the firm's comprehensive offerings cater to all walks of life.

"Over the years, our commitment to serving their clients with unwavering dedication has remained unchanged," said Mr Upton. "Our motto is 'For moments that matter'. That's because, since 1913, the firm has dealt with almost every legal problem our clients could imagine, making us the go-to choice for individuals and businesses."

That dedication extends beyond legal matters. The firm actively supports local clubs and organizations, contributing to the

betterment of the community they serve.

"With Butler McDermott Lawyers, you gain more than just legal representation; you become a part of a trusted partnership that has stood the test of time," said Mr King. "From commercial matters to estate, personal injuries litigation, criminal defence to Family Law, you'll find the experience and support you need under one roof."

Mr Boyce said fighting for clients' rights was the motivating spirit behind the firm. "It's so important that when the chips are down, the future uncertain, you know that we're here, and we'll go in to fight for you," he said.

www.butlermcdermott.com.au
5441 1044 | 6-8 William Street Nambour

HINTERLAND SUSTAINABLE ARCHITECTS

Habitanace Energy Positive Architecture offers sustainable designs with additional rewards.

Founder Alex Hoffmann enjoys 30 years' experience working for practices in London, Brisbane, and the Sunshine Coast, where he and his family have lived since 2008.

Specialising in residential, civic & community projects, and public transport infrastructure, his mission is to design buildings that produce more energy than they need. Expertise in architecture has paved the way for Alex's inspiring solutions and collaborations with like-minded locals.

"All our designs echo our three objectives of connecting commu-

nities, improving wellbeing, and generating energy," he said.

Habitanace recently announced its architecturally designed suite of 'LiteHouses', designed to cater to environmentally conscious home buyers, offering energy-positive havens, with the option to operate entirely off-grid."

Whether you're considering a new build, major renovation, secondary dwelling or have a community project or development opportunity, Habitanace can help. "We design sustainable and adaptable spaces" Alex explains, "and look forward to helping our community."

www.habitanace.com.au
hello@habitanace.com.au
5408 4144





The BOQ Nambour & Hinterland team at the Nambour branch.

BOQ NAMBOUR & HINTERLAND

Truly personal banking is still available in Nambour

BOQ Nambour & Hinterland was recognised early in 2023 with an Australia-wide Bank of Queensland award as the equal-best branch in Australia over the first half of the financial year.

“Being recognised in the BOQ QSTAR Bank of Queensland awards is an incredible nod to the way we operate. We all feel very proud,” said Branch Owner-Manager, Matt Wall.

With big banks turning their backs on town branches and personalised service, BOQ Nambour & Hinterland has stepped into the void.

By embodying the spirit of community banking and keeping the focus on individual relationships and face-to-face service, Matt – who took on the branch in 2021 – says he and his team couldn’t be happier with the response so far.

“A great banking experience comes down to offering truly personal service,” he said.

“And customer relationships are at the heart of everything we do here. People in Nambour and the Hinterland love coming in and doing their business face to face. It’s as simple as that. We have a fantastic team here and we work hard to help our local customers thrive.”

While banking has changed dramatically over the years, what hasn’t changed is the role a supportive banking team can play at critical moments in people’s lives.

“From buying your first home or car, upgrading property, or starting and growing your business, we’ve got your back,” Matt said.

BOQ Nambour has always been an important financial for our region attracting customers from Montville, Flaxton, Eudlo, Mapleton and Yandina to Kenilworth and beyond.

The local branch provides a full service offering from its Ann Street premises. The team can help with home loans, business loans, transactions and savings accounts, credit cards and insurance.

“Still, our philosophy is to provide much more of a partnership with customers regarding the services we can provide,” Matt said.

“I strongly encourage people to put their current lender under review,” he said.

“With interest rates rising, people whose fixed rates were coming to an end should put their current lender under investigation and consider booking a home loan review with BOQ.”

You can visit the branch to chat with a local home loan specialist or get in touch via the details below. The branch



Matt Wall.

has a mobile lending specialist, Rowan Clemitson, who is on the road and visits clients at home or work.

Contributing to the community

Within a short space of time BOQ Nambour and Hinterland has become well embedded in the local landscape, supporting community groups and sports clubs such as the Hinterland Blues AFL, Nambour Toads Rugby Union, Nambour Cricket,

Nambour Piranhas Swim Club, St John’s College and the Sunshine Coast Youth Orchestra.

“We have been made to feel so welcome among all of these fantastic organisations and we love being a part of the local club culture,” Matt said.

“I can assure residents that we’re not going anywhere. We love our community and we’re here to help them for the long term. We have a great team and I think people are realising and appreciating that.”

15 Ann St, Nambour | 5376 9999

Matt.Wall@boq.com.au

facebook.com/BOQNambourHinterland



Partner Peter Griffin, Director Jacob Corbett and Associate Director Bridie Edwards.

BRADLEY & BRAY LAWYERS

Your trusted local Law Firm

WHEN it comes to legal matters, having a reliable law firm you can trust is essential. For the locals of Nambour and surrounds, Bradley & Bray Lawyers has been the go-to choice since 1976.

Specialising in Property Law & Conveyancing, Commercial & Business Law, and Wills & Estate Planning, the boutique law firm takes pride in providing top-notch services for the Nambour and the Hinterland community.

“Over the years, our firm has built a strong bond with the community and we are grateful for the diverse range of clients who have put their trust in us,” said Partner Peter Griffin. “Some have been with us for over 45 years, and we are honoured to continue serving them, their children, and even their grandchildren.”

While the firm may be over 45 years old, it remains young at heart and forward-thinking Director Jacob Corbett has been a driving force in bringing law and its application into the digital age.

His mission is to redefine the way legal services are delivered.

“My aim is to make our offerings accessible 24/7 and to enable clients to make informed decisions in partnership with their lawyers.

“We take great pride in our high client satisfaction rate, measured through anonymous



- OUR SERVICES**
- Real Estate & Property
 - Business & Commercial
 - Succession Planning, Estate Administration & Estate Disputes

surveys that help us continuously improve,” said Jacob. “Our clients’ needs are at the forefront of everything we

do, and their positive feedback motivates us to strive for excellence.”

Bradley & Bray Lawyers also believes in giving back to the community which has supported them over the years.

“We volunteer for the Sunshine Coast Young Chamber of Commerce and the University of the Sunshine Coast School of Law and serve the community through a number of other programs such as PCYC, Hope Hampers, Wishlist and more,” said Associate Director Bridie Edwards.

The firm’s commitment to excellence and innovation has also earned recognition in the legal profession, with multiple awards and nominations.

“But what matters most to us is the trust and respect we receive from our clients and the community we proudly call home,” Bridie said.

For legal advice or assistance, turn to Nambour’s trusted local law firm, Bradley & Bray Lawyers.

“You’ll find a dedicated team ready to listen, guide you, and most of all, protect your interests. We are here for you, right here in Nambour,” said Peter.

**Level 1, 15 Ann Street, Nambour
PO Box 243, Nambour
www.bradleybray.com.au
07 5441 1400
info@bradleybray.com.au**



WOOMBYE VET SURGERY

Personalised, compassionate care

FINDING a veterinary surgeon that truly understands and cares for your beloved pets can be a challenge.

Woombye Veterinary Surgery understands that your pets are like family and the team is committed to providing them with the best possible care.

Practice Principal Dr Charlotte Ashton-Heinius (BVSc.) has owned the surgery since 2000 and lives in Woombye.

“Small town personalised and intimate care by our veterinary surgeons and nurses is, for us, what makes all the difference,” said Charlotte.

“We take our time to listen and to diagnose your pets’ problems.

With a patient and gentle approach to treatment and consultations, we will make you and your pet feel comfortable in our practice.

When a pet comes under our care, we treat it as if it is our own. It becomes part of our family during its’ stay. I think that the pets and their owners feel that, and it helps to put them at ease.”

The surgery has three fully equipped examination rooms including a dedicated consultation room for cats.

Diagnostic facilities on-site

A variety of diagnostic facilities including In-House laboratory and pathology testing, digital radiology and ultrasound are available.

Our pharmacy is well-stocked for all of your pets’ needs.

The modern surgery layout has a large general treatment facility with multiple anaesthetic terminals and features a state-of-the-art surgical suite. Oxygen is generated on-site.

All the cages are heated and equipped with an Oxygen supply outlet for intensive care requirements.

Cats are housed for comfort in a separate cattery room.

Our well equipped surgery enables us to diagnose and provide treatments and outcomes in accordance with high veterinary standards.

From vaccination, health advice, and preventative medicine, to surgery and emergencies, Woombye Veterinary Surgery provides care and comprehensive treatment options for all your pets’ health needs.

Experience the difference of small-town, independent and compassionate veterinary care for your beloved four-legged family members.

5442 2000

23 Blackall Street, Woombye
info@woombyeveterinarysurgery.com.au



EASY TRAVEL & CRUISE

We'll help you explore the world, right from our Nambour office.

FOR many people, travelling and exploring the world is often right at the top of their bucket list.

However, bringing a dream trip to life can sometimes be quite stressful because there are so many elements to take into consideration and so many different options available when trying to create the perfect holiday. This is where the experience of an industry expert can make the process both exciting and enjoyable.

Sue Sullivan and her team at Easy Travel and Cruise have decades of experience in the travel industry and have helped thousands of happy travellers embark on their dream holiday.

Multi-award-winning agency

Easy Travel and Cruise is a multi-award-winning full-service travel agency for both international and domestic travel and is also a certified cruise specialist. Easy Travel and Cruise's owner Sue Sullivan is understandably proud of her two conveniently located stores, in Nambour and Gympie, as both stores have 5-star Facebook ratings and 4.5 plus-star Google ratings.

"We are an independent, family-owned and operated boutique agency," Sue explained.

"Our clients are lovely and often become our friends and we always try to ensure that they have the best possible holiday.

"My wonderful, experienced, friendly travel consultants are the reason that Easy Travel and Cruise is so successful. My staff absolutely love travel and are trained to the highest industry standards, and this shows in the numerous awards that we have consistently won over the years."

Sue explains that Easy Travel and Cruise holds regular social events with travel industry specialists who give presentations about different travel options.

"It is crucial to match the type of holiday with the traveller to ensure that their specific holiday is exactly what they want."

Recent events held by Easy Travel and Cruise included Hurtigruten Expeditions, Scenic Luxury Cruise and Tours River Cruising, Wendy Wu Tours and specific Solo Traveller events about cruising and luxury coach travel options.

Sue said: "We have a fabulous solo traveller's group who meet regularly on the Sunshine Coast and we are very up-to-date on different holiday options available for our solo travellers."

Sue has worked on cruise ships for over seven years and is passionate about this mode of travel, particularly small ship cruising and river cruising.

Certified cruise specialists

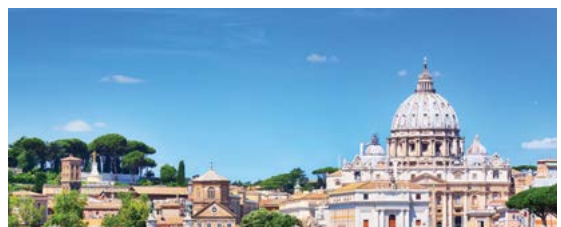
All her staff are certified cruise specialists and are trained to the highest industry standards.

Easy Travel and Cruise is a member of the Cruise Line Industry Association (CLIA).

"This is an industry body that aims to increase travel consultants' understanding of the enormous range of cruise products available as well as the immense variety of cruise itineraries worldwide," said Sue.

Easy Travel and Cruise is also a member of Travellers Choice, Australia's leading network of independent travel agents, and winner of the National Travel Industry Awards "Best Travel Agent Group" accolade in 2019 and 2022.

Easy Travel and Cruise is also a member of ATAS (Australia Travel Industry Association).



Well travelled

Sue ensures that her staff regularly travel to make sure that they have current knowledge about different destinations. In fact, staff members have travelled to over 20 different countries in the last 12 months, and two are off to Antarctica later this year.

3/23 Lowe St Nambour | 5313 4980
easytravelandcruise.com.au



NAMBOUR STATE COLLEGE PINNACLE PROGRAM

Reach the peak of your passions

To foster the talents and passions of its students, Nambour State College proudly presents the Pinnacle Program.

The Junior Secondary initiative runs for Years 7, 8 and 9 and offers young minds a platform to explore special interests and reach their potential.

While students learn together for core curriculum areas such as English, Maths, Science, and Humanities, they also benefit from an additional lesson dedicated to their specific strand, ensuring a well-rounded and engaging experience.

The program, which has been met with enthusiasm from students and parents alike, provides an opportunity for learners to connect and learn with like-minded peers in one of five Pinnacle interest strands: Athletes, Creatives, Cultivators, Future Leaders and Innovators.

Athletes:

For students who enjoy sport and being healthy and active. Students with a commitment to teamwork and a desire to continue this interest throughout school. Opportunities to develop skills in tactics, coaching, fitness and training, ethics and sport psychology.

Creatives:

For students who enjoy creative pursuits including the arts. Students who are naturally creative, enjoy collaborating with others and can demonstrate learning through performance & exhibition. Opportunities to develop skills in problem-solving and critical thinking.

Cultivators:

For students who enjoy agriculture, horticulture and livestock operations. Students who enjoy teamwork, problem-



Calling all music, dance, drama & visual art enthusiasts

For even more artistic adventures, Nambour State College offers the Nambour Academy of Creative Arts (NACA) Excellence Program.

This program calls on all Music, Dance, Drama and Visual Art enthusiasts in Years 7-10.

To secure a position in this extra-curricular excellence program, students need to complete an application including a portfolio for Visual Art, and audition for Dance, Drama or Music.

Nambour State College is proud to offer a wide variety of award-winning ensembles, groups and activities in

which students can participate.

Successful applicants attend additional tuition outside school hours twice a week during school terms as well as showcase their skills in culminating events throughout the year.

Students still participate in all electives in addition to NACA.

Applications and auditions are completed electronically.

- For further information contact Liz Clout, Head of Department, The Arts eclou6@eq.edu.au or apply through this link: www.namboursc.eq.edu.au/curriculum/excellence-programs.

solving and have an interest in agricultural production. Opportunities to develop skills in contemporary farming technologies, sustainability and ecosystems.

Future Leaders:

For students who enjoy problem solving, speaking, listening & motivating others. Students who are open-minded and see potential in others; whose actions lead by example and who empower and inspire. Opportunities to develop skills in critical-thinking, higher-order thinking, politics & decision-making.

Innovators:

For students who enjoy solving real-world problems, teamwork and collaboration. Students who enjoy using technology and have good skills in Science and Maths. Opportunities to develop knowledge and skills in robotics, coding, drones, gaming and invention.

For more information contact Nambour State College.

07 5450 4111
info@namboursc.eq.edu.au
www.namboursc.eq.edu.au

Lewis Trudgett, left, and Owner of PaintRight Nambour Duke Anderson.



PAINTRIGHT NAMBOUR

For premium paint products, tools & techniques

OWNER of PaintRight Nambour and second generation painter, Duke Anderson, brings over ten years of experience in painting to the business.

Duke has worked on a number of high-profile projects, including the 2 billion dollar Crown Casino in Sydney and for the prestigious specialist Sydney painting company, Hermosa Painting Finishes, who are widely regarded as industry leaders in decorative and luxury finishes.

“What these experiences really taught me was the importance of using premium products, tools and techniques to get the best possible result,” he said.

“This is why we have an exclusive partnership with Haymes Paint, which is the leading Australian paint brand,” Duke said.

“We also support Resene, which is an exceptional New Zealand brand.

“There are many paints I will not stock because I will never compromise on quality and it’s a bonus that nine times out of ten we can beat the price of comparable products anyway.”

Duke’s experienced staff not only are lifetime locals to Nambour but they also bring their own knowledge and expertise to the store.

“Emily Shaw has worked in Paint stores for over 12 years and has studied colour therapy and colour design and is our in-

store colour consultant,” said Duke.

“She is able to provide our customers with expert advice on colour selection and interior design. “When you are investing in painting your home, it is so important that you experience the ‘wow’ factor at the end of the job,” he said.

Lewis Trudgett has painting experience and has also worked in paint stores across Queensland for the past 7 years.

“Lewis has incredible product knowledge and can work with our customers to make sure they are getting the right product for the job. We have made the store the ‘go-to’ destination for all your painting and decorating needs,” Duke added.

“We stock brands including Cutek, Nor-glass, Rustoleum, Vehicle

Raptor Finish, Resene, Haymes, Spa n Deck, Sikkens, Line Marking, Globalcote, Australis roofing paint, garage floor paint and all your timber needs.

“We want our customers to experience



the best combination of advice and information, as well as the correct tools and product, because when it comes to painting and decorating, some mistakes can end up costing thousands of dollars to rectify.

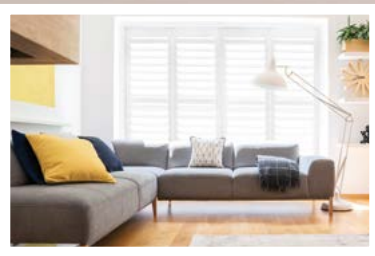
“I want to help people avoid the common mistakes I see everyday,” said Duke.

“Whether it’s skipping primers, using the wrong products, not preparing the surface correctly, or even applying the correct product incorrectly, we are here to help and

advise. We work hard to help you get your painting project done right and we even have coffee ready to go for our painters in the morning,” said Duke.

“We have deliveries for tradies 6 days a week from 6am into the late afternoons and a lot of the time we do night deliveries on the way home from work.”

117 Howard Street, Nambour
07 5476 3355
www.nambour.paintright.com.au



The Custom Curtains and Shade team includes Jeff, Kylie, Julie and Jim, pictured in their Hospital Road, Nambour showroom



CUSTOM CURTAINS & SHADE

Excellence in window furnishings. Nambour showroom

FINDING quality curtains and blinds that suit your individual situation is a daunting task. With countless options on the market, it's easy to get overwhelmed and be unsure about which products will truly meet your needs.

What you need is someone to help you navigate the journey.

Custom Curtains and Shade owners Julie and Jim Dudley pride themselves on taking the stress out of the process, from decision-making to installation.

From decision-making to installation

Best of all, unlike other window furnishing businesses, Custom Curtains and Shade also provides a full in-home consultation.

"The crucial first step is to provide expert local guidance in the initial stages," said Julie.

"Some customers have a clear vision of what they want. Others need assistance brainstorming ideas. Whatever it is we'll work with you to achieve the perfect look for your space.

"This 'homework', supported by our wide selection of solutions in our showroom helps ensure the best results."

The family-run company has been serving the region since 1989, offering custom-made curtains, blinds, awnings, shutters and security screens.

"We truly have options to suit every style and requirement," said Jim.

"As locals, we do go the extra mile to ensure every customer finds the perfect solution for their space.

"Many of our products are locally manufactured. We make sure they are of the very highest quality and premium workmanship."

Comprehensive fabric range

As a one-stop shop for all your window and door furnishing needs Jim and Julie stock one of the most comprehensive fabric ranges in south-east Queensland, providing you with endless design possibilities.

"Our suppliers are all very reputable, and we take pride in offering the most durable and high-quality products," said Julie.

"Plus, our fully-trained staff will install your chosen products with great care and efficiency."

Their impressive clientele includes flagship local businesses like Maleny Manor, Maleny Cheese, and the award-winning Glass on Glasshouse.

Crimsafe Security, awnings and patio enclosures

Custom Curtains & Shade range even includes motorized awnings, luxury umbrellas and patio enclosures, ensures that every aspect of shade solutions is taken care of.

The boutique Nambour business has a

stellar reputation for excellence in window furnishing.

Their commitment to personalised service and attention to detail ensures a seamless experience for all customers.

"We take the time to understand your requirements, whether it's for a new build or a renovation, and provide a comprehensive range of options to suit your needs," said Jim.

"It may sound like a cliché but our unwavering focus on care and attention to detail is what sets us apart."

Select locally from

- Curtains – fully custom-made
- Blinds – Roller Blinds, Venetians, Panel Glides
- Awnings- Metal and Fabric, Café Blinds
- Shutters – Timber, Composite and Aluminium
- Security Doors and Windows
- Flyscreens
- Crimsafe Security Screens and Doors
- Patio Enclosures
- Luxury Umbrellas
- Roller Shutters
- Motorised Awnings, Curtains & Blinds
- Wallpaper

www.customcurtains.com.au
07 5441 6000

Shop 5 46-50 Hospital Road, Nambour
info@customcurtains.com.au



AML Plumbing & Gas is run by husband and wife team, Mitch and Lou.

AML PLUMBING & GAS

Because plumbing and gas needs to be done right

YOUR property's plumbing and gas systems are vital to its functionality and safety, making it essential to find a trustworthy and reputable provider who is qualified to do the job right.

AML Plumbing & Gas is a local, reputable and experienced small business worked and run solely by husband and wife team, Mitch and Lou, "We do everything from underground to your roof at a reasonable price," said founder and senior plumber Mitch Bischof.

Mitch said it is important to hire a licenced plumber or gas fitter. "A lot has changed in the industry over the years," he said.

"A licenced plumber/gas fitter has rules and regulations that we must adhere to, to ensure our work is safe and compliant with all relevant Australian Standards. Also, if you plan to sell, your renovation should comply with Australian Standards or the sale may not go through smoothly – or at all."

Mitch & Lou take pride in old-fashioned service, local roots and doing the job right.

"We are proud to be Bli Bli locals," said Mitch. "We pride ourselves on friendly, prompt, reliable service and we will even clean up after the job's complete. People appreciate

that we're locally owned and operated with over 21 years in the plumbing & gas industry.

"We have the most up-to-date tools, technology and know-how to offer the best plumbing and gas solution in a cost-effective, efficient way. From clearing blockages and locating problems to handling domestic, commercial, and industrial jobs, we've got you covered."

Drain camera

AML Plumbing & Gas have a drain camera, *pictured*, to locate any problems. "With our drain machine and camera we can clear blockages, locate the problem and advise on the best solution."

AML Plumbing & Gas has experience in all domestic maintenance and renovation works and extends to working with schools, offices, workshops, rentals, real estate agents, childcare centres, nursing homes and more.

"We have our fully accredited working

with children checks, police checks, and safety requirements to ensure a seamless and safe experience."

As a member of the Master Plumbers Association of Queensland, the company adheres to strict rules and regulations, ensuring work is compliant with all relevant Australian Standards.

"Hiring a licenced plumber or gas fitter is crucial for your safety and compliance," said Mitch.

"We specialise in services like gas compliance certificates, hot water systems, burst pipes, rainwater installations, renovations, and gas installations."

Save water, avoid leaks

Moreover, AML Plumbing & Gas can assist you in saving water and avoiding excessive bills from underground leaks. "In most cases, excess water usage is usually a sign of an underground leaking pipe.

"Councils will generally wave the excess water bill if a licenced plumber is engaged to repair an undetectable leak.

"There are a number of steps we can take to assist in saving water."

"Give us a call to organise a water efficiency audit."

AML Plumbing & Gas can provide free quotes or an estimate as long as no tools are required for the visit.

0407 966 665
amlplumbing.com.au
info@amlplumbing.com.au





AUTO ELECTRICS QLD

Local experts for auto electrics & mechanical repairs

AUTO Electrics QLD (AEQ) is your one-stop shop for mechanical, auto electrics and air conditioning. The qualified auto electricians and mechanics at AEQ have the experience, equipment and skills to diagnose faults and get your vehicle or machine back on the road as quick as possible.

The business was started by Dan Guy 20 years ago in Palmwoods (formerly Palmwoods Auto Electrics).

Now Auto Electrics QLD is owned by brothers Joe and Dan Guy.

“Over the past 20 years we have built strong relationships with the locals, from mums and dads to farmers and large commercial customers in our local area and all over the Sunshine Coast,” said Joe.

“Being a family-owned business, we work hard to exceed our customers’ expectations. We make the entire process as smooth and convenient as possible and think that has been why the business has grown and why we have so much repeat business from our fantastic local customers.”

AEQ offers tailored services so that customers can have all their car servicing, repairs and maintenance done in an efficient and timely manner, all under the one roof.

“If you need your 4wd fitted out with electrical accessories or your battery replaced, or a logbook service we are your one-stop shop,” said Joe.

“There’s basically nothing we can’t do and the feedback we consistently get is that people like to have everything taken

care of at the same time and under one roof.

AUTO ELECTRICAL EXPERTISE

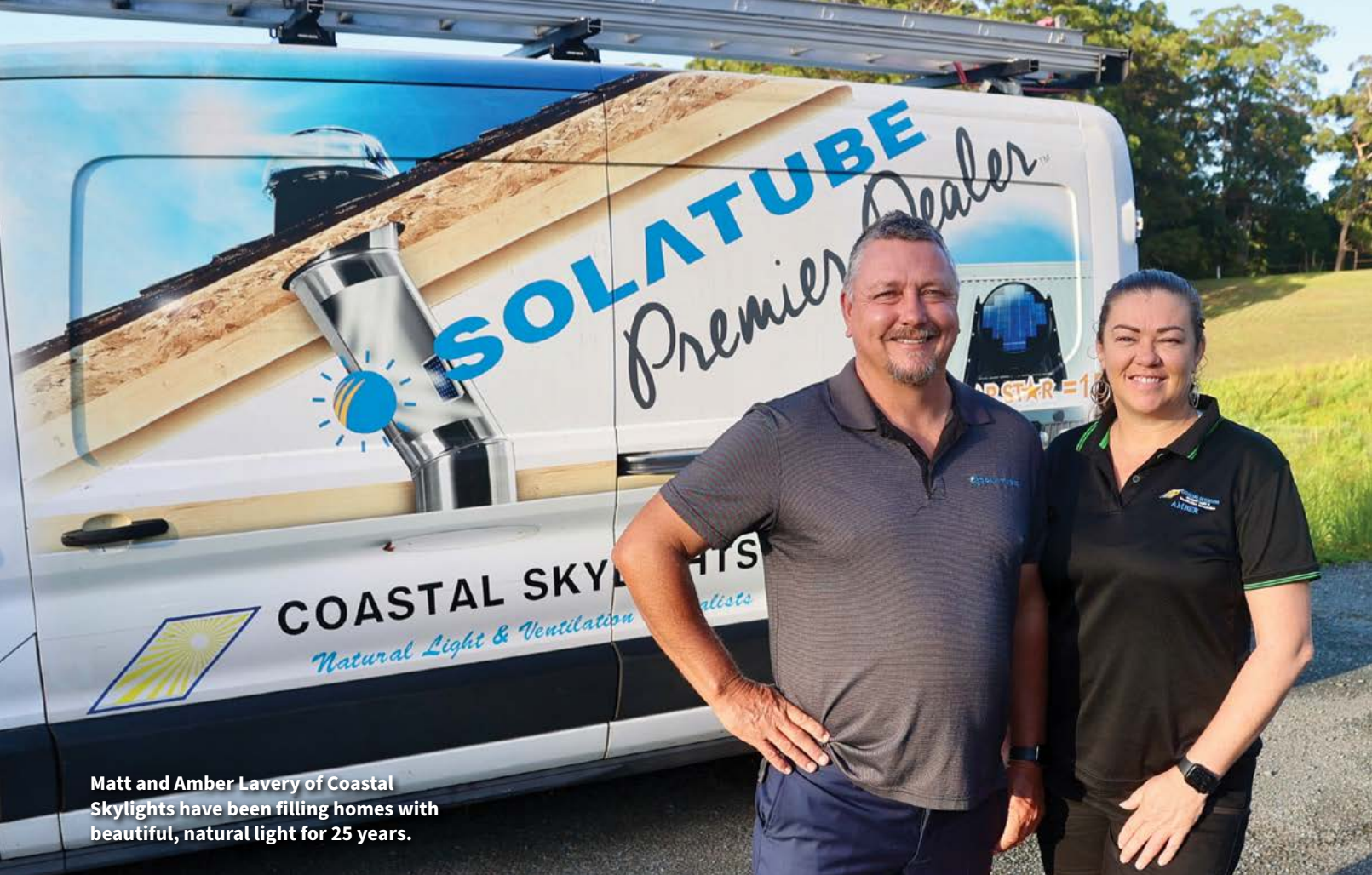
- From Scooters/cars/4WD to trucks, earthmoving and machinery
- Air Conditioning
- Caravan & 4WD Repairs & Electrical Fit outs
- Earth Moving & Farm Machinery
- Batteries & Solar
- 12-volt specialists
- Electric Brake Controllers
- Dual Battery Systems
- LED lighting
- UHF radios
- Alternator & Starter Motor repairs & Replacements
- Reversing Cameras

MECHANICAL REPAIRS

- From cars, 4WDs, trailers and caravans to light trucks
- General servicing
- Logbook servicing
- Suspension repairs
- Brake repairs
- Tyres
- Cooling system repairs
- All mechanical repairs

227 Nambour Connection Road Woombye
5442 2278
www.autoelectricssqld.com.au





Matt and Amber Lavery of Coastal Skylights have been filling homes with beautiful, natural light for 25 years.

LET THERE BE LIGHT!

Add light, air, and lift mood with Coastal Skylights and Ventilation

WOULD you like more natural light in your home or workplace? Skylights can dramatically up the wow factor in any room and beyond the aesthetic benefits, skylights offer real health benefits as well.

For over 25 years Matt and Amber Lavery of Coastal Skylights have been filling homes with beautiful natural light, bringing more life and well-being into homes and businesses. Established in 1998, Coastal Skylights is the leading, local skylight and roof ventilation installation company, providing superior products at affordable prices.

Amber said the company's team of nine

staff is committed to providing quality skylights and down-to-earth customer service.

"We were honoured to win the "Best Overall Performance" Award at the 2023 Solatube Conference earlier this year, beating out all other Solatube dealers across the country. We know what products will best suit your home or workplace and you can rest assured that our Certified Installers will give you the peace of mind that the job will be done to the highest standard."

Looking for ventilation?

Coastal Skylights also offer a diverse range of roof ventilation systems and

ventilated skylights.

"We are the leading skylight and ventilation company for repairs, replacements and new installations. We are fully insured and are QBCC licenced with no job being too big or too small for our team" said Matt.

Contact the team to schedule a free in-home quote so they can assess the area and recommend the optimal Velux, Solatube or ventilation system to best suit your needs.

07 5441 7891

info@coastalskylights.com.au
30-32 Panorama Drive, Nambour
skylightssunshinecoast.com.au



The Velux range floods the room with light and fresh air.



A Solatube installation is perfect to lift light & mood.



Kylie Pitt and Mark Cuthel are the husband and wife team behind Coastal Landscapes.

COASTAL LANDSCAPE SUPPLIES

Let us help to create your dream garden

COASTAL Landscape Supplies is a family owned and operated business based in Kunda Park and is the place to find the largest selection of landscaping products onsite, on the Sunshine Coast.

"We deliver quality products at the right price, exceptional value for money, honest and professional service and advice to ensure that you get the right product for your project," said owner, Kylie Pitt. "And all of it is delivered on budget, on time, and with a smile."

"We strive to provide our trades and retail customers with the highest quality landscaping and garden supplies at the best prices and we work continually to source the latest products," she said.

"Our team is continually looking for ways to help you implement your landscaping ideas."

Coastal Landscape Supplies deliver around the Sunshine Coast and Hinterland from their centrally located yard with their large fleet of modern trucks.

"We have 4 tonne tippers right through to 38 tonne trucks and trailers," Kylie explained."

Any load, any size, anywhere on the Coast

"This means we can deliver any load size, anywhere on the Coast. Phone orders can be serviced on the same day,

and usually within two hours of placing your order and you can also browse and buy from our online store.

"Exceptional customer service is our thing, and our deliveries will always be on time," she said.

"In the unlikely event that we are late and we don't call to let you know, you will get free delivery of that load. That's just one of our guarantees."

Soils blended on-site for quality

Coastal's soils are blended onsite to ensure the highest quality and consistency product.

"Our soils are professional grade," Kylie said.

"Because we source the best products, we can guarantee their quality. Our garden/blended soils are of a professional standard, and our premium soils are prepared on site. Our soil bases are blended

with organic material, composts and fertilizer to create healthy, nutrient-rich soils to make your garden flourish.

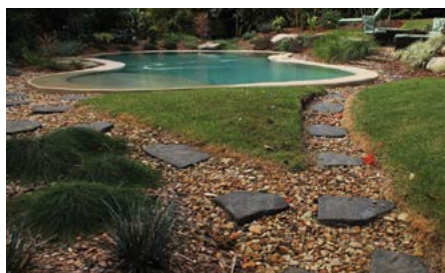
"Our trucks are washed down between loads so you only get what you ordered, and loads are carefully weighed so that you receive the correct amount of product."

Coastal Landscape Supplies are able to supply product for projects of any size; from small back yards to acreage properties and commercial sites, and while retail customers can enjoy the range, price and convenience of shopping with Coastal, trades and commercial customers can access a variety of benefits via membership of the Trade Loyalty Program.

"Our Trades customers get so many benefits from joining our Trade Loyalty Program," Kylie said.

"It gives you access to our discounted trade pricing and allows you to earn points for every dollar you spend, and get some great products and some free deliveries. There is no minimum spend and it is free to join."

So if you have a gardening or landscaping project that calls for the best product, pricing and delivery, let Coastal Landscape Supplies help you bring it to life.



18 Kerryl Street, Kunda Park | 5453 7100
www.coastallandscape.com.au



Walter Meyer and his son Christian.

NORTHERN INDUSTRIAL SALES

Anything to fix, weld, polish, paint, build, or repair machinery

Nambour-based business Northern Industrial Sales has been looking after customers from a broad range of industries for over 30 years.

"But many locals don't realise we are here and how we can help," said Owner Walter Meyer.

"At NIS we can basically sell you anything you need to fix, weld, polish, paint, build, or repair machinery," he said.

"From pneumatic rams, valves, regulators and so on to drive chains, sprockets, pulleys and drive belts.

"We also do conveyor belts and rollers, abrasives, cutting and polishing discs.

"If you need castor wheels, bolts and nuts or stainless steel and brass pipe fittings and hoses, we have them as well and we have just added trailer parts to

our range for all the tradies with trailers.

NIS has a staggering 22,000 stock items in their system including a small but expanding range of safety gear, and although they do not stock all of them, they can get the product to you fast.

"Most items come from Brisbane with only one day turnaround and we can sometimes have it here for you the same afternoon," Walter said.

"You will find our prices to be very competitive, even compared to the major chains."

Unit 2B 1 Whalley Creek Close, Nambour
5441 7344

www.northernindustrial.com.au

ARCHERS TERMITE & PEST CONTROL

Archers Termite and Pest Control is not your average pest control company.

Owners Neil & Zane Archer have decades of experience and have invented and patented the Termi-Slab Seal, a termite protection system that guarantees 100 percent penetration of chemical into all concrete areas.

"Our system ensures all chemicals that you pay for actually penetrate the slab and provide an effective barrier," said Neil.

"We see a lot of jobs that are not done properly where the chemical has washed away and doesn't create a barrier.

"There's nothing to stop the

termites! It happens a lot more than people realise.

"Our system makes sure the chemicals are not wasted and washed out into the waterways. Our follow-up service is excellent.

"The Termi-Slab Seal system invented by us and painted by us is the best system in the world."

Neil also expertly manage everyday pests like cockroaches, ants, and spiders. Phone for a free quote. When only the best will do.

www.archers4termites.com.au
0455 775 512

info@archers4termites.com.au



Owner Neil Archer.

GR FLEET SERVICES

If it's diesel, we can fix it!

As the saying goes, time is money. And GR Fleet Services - a family-owned, locally-operated, one-stop shop for diesel repairs and services - was built on that understanding.

"My wife Lusi and I took ownership GR Fleet Services 18 months ago and have continued the ethos upon which it was built which is to ensure our customer down time is as short as possible," said owner Derek Garvie.

"Our team has over 16 years' experience in earthmoving equipment, (truck mounted) cranes, trucks, and hydraulics. We offer scheduled servicing, minor and major repairs, and breakdown services on demand.

"We also take care of hydraulic cylinders and hose repairs.

"Everything we do is aimed at reducing down-time and ensuring the

smooth running of our client's fleet.

"We have three field service units and hydraulic hose van on the road daily and our workshop stocked with tracks, teeth, fittings, and oils to keep our clients moving."

GR Fleet Services are the Sunshine Coast service and parts agents for Mecalac Australia, HIAB cranes, MOF-FETT forklifts, CASE construction and authorised stockist for Gulf Western and Taipan.

169 Nicklin Road, Palmwoods
3457 3066 info@grfleet.com.au
grfleet.com.au



Owner Derek Garvie with his son Teddy.



SUNSHINE STEERING

A classic reputation built over decades

SUNSHINE Steering owner Dave Ledger is a true expert on steering and suspension with more than 35 years under his belt.

“A lot of other workshops outsource their power steering work to him because he not only has the knowledge, but also the specialist tools,” says his wife Tina. “And he can work on any make or model.”

But if steering is Dave’s specialty, vintage and classic cars are his passion.

Sunshine Steering attracts a steady stream of historic vehicles to the workshop.

“It is not just that I love vintage, classic, rally and race cars, but also that I genuinely enjoy the challenge of fixing things, especially when it is difficult to find parts for them,” Dave said. “I can make parts that are no longer available for older model cars. It is so rewarding.”

Of course, Sunshine Steering also boasts an excellent reputation for repairs,

maintenance and servicing of modern makes and models.

“Our mechanics are always upfront and honest about any work required and we will always call you with an estimate before we start working on anything so you there are no nasty surprises when we are finished,” said Tina.

sunshinesteering.reposervice.net
4/27 Main Street, Palmwoods | 5478 8020

ALLCOAST TYRES

Highly-trained, methodical tyre technicians

AFTER more than 46 years in the tyre industry, the brothers John and Peter O’Leary and their team at All Coast Tyres have initiated some key procedures to help ensure your car and tyres perform at an optimal standard.

“Taking care of your car ‘where the rubber hits the road’ is our speciality and every process and system we have developed over almost 5 decades has been deliberately designed with your safety and the safety of our team members in mind,” said co-owner, John O’Leary.

“Our team is highly trained, each team member’s work is cross checked and we keep true accurate records of when your tyres are fitted and serviced. Punctures and repairs are performed to Australian standards and beyond. Every process, checklist and cross check is designed to elevate our standards and keep you, your loved ones and your staff, safe on the road.”

These processes are implemented across all 4 of their store locations, Nambour, Yandina, Maroochydore & Gympie.



“Our service doesn’t just stop at a premium tyre service in one of the bustling workshops, but also roadside, at home or at work” said co-owner Peter O’Leary. The All Coast team have built a mobile tyre van to service the Sunshine Coast. Puncture repairs, stuck at home or at work? The All Coast team will have your tyre

needs covered. For all your tyre needs across the Sunshine Coast, All Coast Tyres has the solution for you!

22 Coronation Avenue, Nambour
5441 2133 | 5450 9801
Mobile Tyre Van 0477 MOBILE
(0477 662 453)



Barry Jones.

2-GO CLEAR-SPACE

When that clutter just has to go

More than a rubbish removal service, 2-GO Clear-Space provides reliable collection and disposal of anything in the home or garage that requires clearance.

“We’re not just about removing items; we’re passionate about helping our clients reclaim their spaces, giving them a fresh start and a clutter-free environment,” said 2-GO Clear-Space owner Barry Jones. “Homeowners have entrusted us to take away everything from fridges, lounges and armchairs to mattresses and beds.

“We can also take away small clutter or clear a home interior completely. We visit by arrangement and provide a quote and can

take away smaller loads, Monday to Friday all year round. We can also forward-arrange all removals and disposals as convenient.

“Clearing out clutter and making space, is a joy for our customers, as it clears space for another purpose.

“Whether it’s a single item or an entire room, I am committed to handling each task with efficiency and care, ensuring customers’ peace of mind.

“We welcome inquiries all year round and look forward to serving the people of Nambour & hinterland.”

Phone 0477 772 138

CALYPSO BUILDING CO

Reliable building at competitive pricing

Licensed builder Jack Edwards and his team at Calypso Building Co have quickly built a reputation for the high standard of their work, their reliability and their competitive pricing.

“I have been working in the building industry since I was 15,” Jack said.

“And I have developed a strong sense of what customers want. Namely, they want tradesmen who are reliable, professional, flexible and well priced.

So apart from delivering projects on time and budget, that is the real focus of our

business.” Jack and his team specialise in new homes, renovations and extensions, and decks.

“It is gratifying that we have so much repeat business,” Jack said. “I think it helps that we are a friendly crew and we keep the job site clean and tidy. Our customers appreciate that.

“We are also happy to tackle jobs of any size. It’s terrific to get to know our customers over time.”

calypsobuildingco.com.au
0427 766 730
QBCC licence #15128053



Licensed builder Jack Edwards, left, and his team on-site.



Michelle and Dale English.

INDEPENDENT BLINDS & AWNINGS

Working to protect and beautify your home

Independent Blinds & Awnings is a family-based business operating on the Sunshine Coast for 30 years, and works with local manufacturers to provide the best quality products.

“We guarantee quality products, service and workmanship thanks to our long association with local manufacturers,” said owner, Dale English.

“We have a Building Service Authority (BSA) licence to do the job, which is only obtained by having a trade background and a thorough inspection of our work.”

“The majority of our business comes through customer referrals and recommendations,” added his wife, Michelle.

“I think this is because we are big enough to deliver exceptional value and small enough to provide a complete personal service.

“We take the time to understand your needs and expectations, so let us help you create stylish and affordable window dressings.”

Independent Blinds and Awnings supply insect and security screens and doors, plantation shutters and a large range of blinds and awnings to protect and beautify both the interior and exterior of your home.”

Call 0411 872 060
for an obligation-free quote
independentblindsandawnings.com.au



TWO GUYS ELECTRICAL

Your 24/7 father & son dream team

ELECTRICAL issues can strike at the most inconvenient times, leaving you in the dark and scrambling for a reliable solution.

In a world where impersonal service and delayed responses are all too common, Two Guys Electrical stands out like a beacon.

The dynamic father and son team of Jarrod and Tyla Guy have made it their mission to deliver top-notch service and expert electrical solutions in Nambour & hinterland.

Jarrold boasts a 30-year career as an electrician, and is the backbone of the venture.

Tyla, born and raised in Nambour, recently completed his trade, marking

the perfect time for father and son to combine.

The Rosemount-based company brings over three decades of combined experience to tackle any electrical challenge including work for real estate agents, property managers and local aged care providers.

“Whether it’s commercial work, renovations, or urgent service calls, our 24/7 availability and personalized approach will help ensure you’ll never be left in the dark again,” said Jarrod.

“From tackling household faults to working with agents and property managers, we take care of it all,” said Jarrod.

When it comes to emergencies, you can rely on them day and night as they are on call 24/7. “Whether it’s a simple service

job, a complex renovation, or installing air conditioning split systems, we can help.”

Two Guys Electrical’s dedication extends to local aged care providers, where they ensure the lights stay on and the power runs smoothly.

“And we’re not afraid to tackle the smaller jobs that others might shy away from,” said Tyla.

Their personalized approach means every client, big or small, receives top-notch service and attention.

“Our mission is to brighten lives and exceed expectations, no matter the challenge.”

0419 526 503

jarrod@twoguyselectrical.com.au

SIMPLY ANTENNAS

Clearer TV, better entertainment



Are you tired of dealing with TV reception problems like pixelating screens, dropouts or scratchy sound?

Doug and Shan Tilley of Simply Antennas, based in Kureelipa, have been the go-to experts for antenna installation and repairs for more than 25 years.

“We provide a thorough diagnosis and repair to bring your TV experience up to current digital standards and ensure long-term reliability,” said Doug.

One of the main services Simply Antennas can provide is traditional repairs to your TV Antenna system.

“This can take shape in many forms such as ‘No Signal’ displayed on the TV screen, picture break-up, right through to a storm-damaged

antenna system,” said Doug.

“We can assist with body corporate or commercial repairs and solutions too.

“Or we can add an extra TV point.”

With large screen TV’s becoming more affordable more and more customers are upgrading to larger sizes.

“We can assist with wall mounting of TVs, soundbars, and installation of home theatre systems.

“We can also set up and show you how to use your new TV.”

Experience clear, reliable TV reception and entertainment by reaching out to Simply Antennas.

www.simplyantennas.com.au

0402 357 214 | 07 5478 6809

info@simplyantennas.com.au



A roof inspection for hailstone dents.



Repairs are carried out by local, in-house teams.

AUSHAIL

Hail Reporting + Construction

AS residents of the Sunshine Coast and beyond, we know hail storms all too well.

They have the power to wreak havoc on our communities and in particular, our properties.

Our homes are our number 1 asset and caring for them is of utmost importance.

But what about the hail storms that don't 'destroy'? Are they still something to be concerned about?

"Many homeowners are unaware of hail damage to their property," says AusHail Director Darren Shobbrook.

"But even if there are no active leaks you aren't necessarily in the clear.

"There is the potential for trouble down the road with the dents that hailstones cause.

"The hailstorm that came over the Sunshine Coast in October 2021 was

severe and caused significant damage to the area.

"Metal roofs can dent instantly during a hail storm. That dent can cause water and dirt to pool in these dents and cause corrosion.

"Similarly, where the sheets of metal overlap and hail damage has caused these overlaps to deform, water could be caught underneath and also cause corrosion. This corrosion will lead to water ingress and damage to your property over time."

AusHail was founded to help property owners achieve full and complete storm restoration.

This is achieved through a foundationally different structure: by working for the owner NOT the insurance company.

This dramatic difference results in thorough, expedited insurance coverage,

first-rate construction and an exceptional customer experience.

What you receive:

- Free Roof Inspection with Highly Trained Project Manager.
- Claim Management with AssessDirect.
- Roof Replacement with In-House Crews.

Who is AssessDirect?

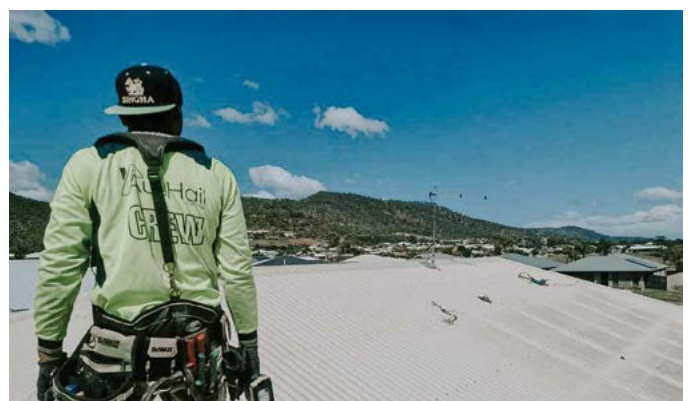
Our expertise, knowledge, and aligned ethos have landed us a partnership with AssessDirect, Australia's top rated claim intermediary that represents the property owner/policy holder (www.assessdirect.com.au).

Welcome to the AusHail Experience! Set up a FREE roof inspection today ...

2/10 Elliot Street, Albion | 07 3106 3456
www.aushail.com.au



The local AusHail team



NAMBOUR & HINTERLAND COMMUNITY DIRECTORY

ARTS ...

Dance for Joy: Philippa Johnson 0417 780 016. Dance for Joy is a dance exercise class for women and men with mobility issues. Small, friendly group meeting weekly in Yandina. Program includes seated, standing and gentle stepping routines to strengthen balance and coordination. Wheelchair access available.

Nambour Lind Lane Theatre: Glenda Campi (President) 1300 732 764 lindlane.com.au Lind Lane Theatre, 16 Mitchell St in Nambour is a State-of-the-Art Theatre with Hearing Augmentation run by a group of loyal volunteers. We perform quality work of all genres, 6 times a year, by new and admired seasoned directors and actors.

The Mapleton Choir: Contact Robyn Gray 0403 761 147 guso4@westnet.com.au. Local community choir for all ages and musical ability. Two major concerts each year, Christmas music, retirement villages and charity functions. We meet at Kureelpa hall on Mondays at 7pm.

Palmwoods Little Village Theatre: Secretary Ronda Vijsma 0408 557 519. Provides musical theatre productions and concerts for audiences in the Sunshine Coast hinterland and beyond. Weekly rehearsals Mondays 10am to noon, Palmwoods Girl Guide Hut. Visitors and new members welcome.

FESTURI: A multicultural charity organisation that promotes free family-friendly multicultural music and dance festivals around the Sunshine Coast, and local music events. Bringing the world music & dance in one place, Dominique Cisse Artistic Director 0401 052 649 festuri.info@gmail.com www.festuri.org.au

Yandina Country Music (ACMA Inc): Contact Jo Lamb (Secretary) 0449 181 638. Concerts are held on the third Sunday of the month at the Hall of Fame, 24 Steggalls Road 12pm. Enjoy popular country with a great band, local artists and guest artists.

CHURCHES ...

Nambour Wesleyan Methodist Church: Nambour Wesleyan Methodist Church is a Bible-believing Christian Church where all are welcome. 165 Perwillowen Road, Nambour, 5476 4263, revscottlucas@gmail.com, nambourwesleyan.org.au.

Nambour Salvation Army: The Salvation Army Australia is an international Christian movement, united by faith and giving hope where it's needed most. We believe that with one hand we reach out to God and with the other we reach out to the world. Meets: 4-6 Maud St, Nambour at 10am each Sunday. Christian Church 5441 7307, ncr@salvationarmy.org.au.

Maleny Anglican Church, Memorial Wall and Hall: Contact Rev'd Deb Bird 07 5499 9130 MalenyAnglican.com.au. A warm, vibrant and inclusive church

family promoting an engaged faith and spirituality for the real world. Sunday Eucharist 9.30am, Contemplative Taize 3rd Sundays 5pm, Meditation Wed 11am, study groups and hall hire. Baptisms, weddings, funerals welcome.

Montville Anglican Church, Memorial Wall and Hall: Contact Rev'd Deb Bird 07 5499 9130 MalenyAnglican.com.au. A beautiful boutique church of stained glass windows perfect for weddings and baptisms. Offering gentle acoustic services Sunday 8am, Meditation Wednesday 9am, community conversations and hall hire.

Kenilworth Anglican Church and Community Hub: Contact: Rev'd Deb Bird 07 5499 9130 MalenyAnglican.com.au. A classic country church perfect for weddings, baptisms, arts events and community group gatherings. Holy Communion Sundays 9am, Morning Prayer Thursdays 9am, Meditation Thursday 9.30am (at St John Bosco) and regular study groups.

Palmwoods Anglican Church and Opportunity Shop. Contact: Rev'd Deb Bird 07 5499 9130 MalenyAnglican.com.au. A church in the liberal catholic tradition with an emphasis on loving community. Sunday Eucharist 8.30am with choral hymns. The Opportunity Shop offers affordable clothes and homewares, with funds supporting local ministries and charities.

Nambour Anglican Parish: Coral McVean (Warden) 0438 417 880 nambour@anglicanchurchsq.org.au. Nambour Anglican Services are held at St John's in Nambour every Sunday at 8.30am and at 5pm. We welcome everyone and there's always a cuppa after each service. On the 2nd Sunday of the month St Margaret's Woombye has a 9.30am service also. Wednesday services will be starting at St John's as of the 25th October at 10am.

COMMUNITY ...

Yandina and District Community Association YADCA: Marie Reeve (President) 0487 467 270. www.YADCA.org. YADCA provides residents with a regular forum and updates on community issues and development. It represents Yandina's interests to all levels of government. Meetings are held on the second Monday of the month at 7pm in Connections, Low Street, Yandina. All welcome.

Maleny Visitor Information Centre: info@malenyinformationcentre.org.au, www.malenyinfocentre.edublogs.org. The Centre is a not for profit, community service located at 2/23 Maple Street, Maleny. It is run by dedicated volunteers who love sharing their local knowledge. We partner with businesses and welcome new volunteers. Come and join us!

Wildlife Volunteers Association Inc. (WILVOS): Lisa Domagala secretary@wilvos.org.au 24 Hr Hotline: (07) 5441 6200 www.wilvos.org.au, since 1993 com-

mitted to rescuing, rehabilitating and releasing native wildlife. 24 hour Hotline dedicated to assist people with all species of sick or injured wildlife, across the Sunshine Coast and beyond.

Mapleton Country Market: held every 4th Saturday of the month at the Mapleton School and proudly supported by MADCA. Join us on a Saturday morning from 8am to 12pm. Showcasing our local producers, artisans, innovators, and communities, while contributing to the economic development of our region.

Montville Village Association: aims to represent the views of the local community on matters associated with the progress and development of Montville, to provide and support social structures to maintain a healthy and vibrant community, and manage the Montville Village Hall and the Montville Sports and Recreation Grounds fairly. email: secretary.mva@gmail.com, www.montvillevillageassociation.org.au.

Nambour Museum: President Clive Plater 0408 713 093 or 5441 2119, www.nambourmuseum.org.au, nambourmuseum@gmail.com. The Museum showcases the rich heritage of the local district, with permanent displays and special exhibits highlighting major industries and special interests. Exhibits include sugar cane locos, early telecommunications, health care, local government and military memorabilia. Open Wed-Friday afternoons 1pm-4pm and Saturday 10am-3pm. Volunteers welcome.

Woombye Community Library: Corner Blackall & Hill Streets. Phone 5442 2250. Our Library is free to join and entirely volunteer run by welcoming locals who love reading. Adult fiction, non fiction and children's books, inc new releases available. Open Mon to Fri 9am-12 and 2-5pm and Sat 9am-12noon.

Petrie Creek Catchment Care Group Inc: Florabunda Bushcare Community Native Plant Nursery Contact: Jamie Slaven 0475 581 890, 93-145 Diddillibah Road Woombye. www.florabundabushcare.wordpress.com. We are a community nursery open to the public selling a range of local native plants including groundcovers, shrubs, trees, grasses, vines and ferns. We also sell native flora and fauna books and can provide property advice. Open 8am-3.30pm Monday to Thursday and 8.30-noon Saturday.

Mapleton Library and Community Centre: Offers over 11,000 books, magazines and DVDs for borrowing (children, young adults, large print). JP services, laminating, internet, printing, other computer services. Workshops, events, public notice board, community brochures. A quiet place to relax and meet friends. Owned and staffed by volunteers. mapletonlibrary@gmail.com, www.mapletoncommunitylibrary.com.

HOBBIES/SPECIAL INTEREST ...

Blackall Range Woodcrafters Guild: 230 Balmoral Road, Montville. Contact secretary@blackallrangewoodies.org.au. Learn woodworking in two fully equipped sheds on 6 mornings per week. New members are welcome. Enjoy making practical woodcraft, social interaction, skill-building, safety awareness and practices, volunteering, donating woodcraft to non-profit organisations, and promoting good mental health.

Nambour Orchid Society: is made up of over 100 like-minded members who vary in orchid-growing knowledge and experience. We learn so much from each other and all our members love to share their growing tips. Meetings are every fourth



Saturday of the month, from January to November, at the Uniting Church Hall, Coronation Ave at 1.15pm. nambourorchids@gmail.com.

Yandina Yarners: A group of local ladies that meet every Thursday between 9.30am to 11.30am at the Ginger Factory Cafe. During this time we knit & crochet knee rugs, from donated wool, for Oncology patients. Or you can work on your very own creation. There is no charge and everyone is welcome to come along to join in or have a yarn over a cuppa.

Sunshine Coast Radio Sailing Club: Contact Mark Lewis (Secretary) 0424 787 884 www.scrsc.org.au. SCRSC races radio controlled model yachts on Tuesdays, Wednesdays, Saturdays & Sundays. Training & assistance given to newcomers - great location, friendly members & a fun sport. Our cheapest yacht starts at around \$450 for a basic set up. Call for more information or check out our website.

Sunshine Coast Model Boat Club Inc: Contact: (President) Garry Powell 0403 32 8 350. We are dedicated group who enjoy and promote the building and sailing of Radio Controlled Model Boats. All welcome. Check out our website www.scmabc.org.au.

Sunshine Coast Scrabble Club: Contact Trevor Sauer (convenor) 54457770. Sunshine Coast Scrabble Club meets at 1pm every Friday at Nambour RSL. Games are low key with emphasis on enjoying the game in the company of other Scrabble lovers. Everyone is welcome, whether you are an average player or more experienced.

Genealogy Sunshine Coast: Email genealogysc@gmail.com, Facebook.com/gscnambour. We help with local history or your family history. GSC maintains a large library of local history, social history and family history publications and much more. Meet Monday, Tuesday and

Thursday from 9am to 4.30pm.

Palmwoods Community Garden: Also known as 'Soil & Soul' our group meets at 17-19 Hill St, Palmwoods, weekly. Members can join the group or have their own raised bed when available at a yearly fee. We grow vegetables, fruit, herbs, Bush Tukka and some flowers as organically as possible. It is also a great way to connect with the community. We have 'Reflection in the Garden' on the 2nd & 4th Sundays at 3pm May-Aug & 3.30pm Sep-April followed by a Working Bee an hour later. We also share a BYO meal on the 4th Sunday afterwards. On the other weekends we have a 7.30am Working Bee on Saturdays. All welcome.

Sunshine Coast Antique Car Club: Formed in 1963 to foster and advance interest in the history, restoration and preservation of classic and historic vehicles. It provides an avenue for the sharing of information by vehicle owners. Owning an historic vehicle is not a pre-requisite of membership. See our website: sccac.org.au

Maroochy Vehicle Owners Club: Gary Deane President Mobile 0437 554 207. www.maroochyvehicleownersclubinc.org.au. The Maroochy vehicle owners club is about preservation & restoration of older vehicles. We meet twice a month for a car run, one on a weekend and another midweek. Our club is a small & friendly organisation with people that like to enjoy their cars & company. New members always welcome.

Sunshine Valley Men's Shed: Located on almost five acres of land in the picturesque West Woombye district, the Sunshine Valley Men's Shed's aim is to provide both wellbeing and companionship to its members as well as support the local community. The Shed covers woodworking and metalwork together with horticultural pursuits within our orchard and market garden facilities. 279 Blackall Range Road,



West Woombye. 0498 463 430.

Nambour Garden Club: contact Anita Bruce (Membership Secretary). Phone 0490 415 067, Email: nambourgardenclub@gmail.com, aims to encourage the enjoyment of gardening and the understanding of horticulture, through friendship, meetings, garden visits, and expertise from guest speakers. Meetings are 9am first Monday of the month at Nambour Uniting Church Hall 37 Coronation Drive Nambour.

Sunshine Coast Writers' Group: Mike Longhurst (Secretary) 0408 366 515. A group of writers who enjoy reading our prose/poetry creations to our friendly members and receiving constructive feedback. We meet at 1pm (first and third Mondays, February to November) at the North Shore Community Centre, Mudjimba.

Flow Bouldering: An amazing indoor bouldering gym for any ages. Our climbs range from complete beginner to extremely advanced so there is something for everyone to enjoy. Bouldering is a very social sport and Flow is the place to make new friends, so come have a go and become part of our wholesome community! :) Contact the Team on 0427 674 563.

SERVICE ...

Nambour Chamber of Commerce Inc: Business Owners & Managers who join the Nambour Chamber of Commerce are investing back into our Region's economic future. The Chamber provides initiatives & regular events to enable connections, collaboration, upskilling, support, advocacy, information & opportunities. To join



please visit www.nambour.wavecrm.com.au/signup or for further info email Julie at enquiries@nambour.com today.

Maleny Rotary Club: Develop and sharpen your leadership and communication skills, expand your professional network, and make a difference in the lives of those around you. Enjoy the friendship of people giving back to the community and our fun social events. Direct message Paulette via www.facebook.com/rotary-clubofmaleny

Speak Up Now - Stop Domestic Violence (Maleny & Blackall Range): Contact: Val France speakupnowstopdomesticviolence@gmail.com. We aim to reduce domestic and family violence within our community, by raising awareness of how the community can work together to help everyone to live a life free of violence and abuse.

Probus Club of Nambour Inc: A worldwide organization for retired and semi-retired people seeking fun, fellowship and friendship with likeminded people. The club engages in trips, and other social activities. We meet at 9.30am on the second Friday of each month in the Masonic Hall in Yandina. Enquiries contact 54422464.

Australian Red Cross - Nambour Branch: The Nambour Branch welcomes new members. We meet at 9.30 on the first Monday of each month at 21 Price St., followed by lunch. We are involved with a range of community activities - a great way to assist locally and beyond and to make new friends. Contact: President Rhondra - 0418 184 402

Zonta Club of Blackall Range Inc: "Contact: Margy Henderson on 0412 206 305 or president@zontablackallrange.org.au. Zonta Club of Blackall Range - part of a worldwide service organization whose mission is advancing and improving the

lives of women and girls. Come along to one of our friendly social dinner meetings, hear about our local initiatives and learn about Zonta projects around the world. We'd love you to get involved. Meeting in Maleny every month.

Freemasons Montville, Lodge 260: We meet the second Tuesday of every month at our Lodge at 150 Main Street Montville. Today's Freemasons is all about inclusiveness, friendship and a great time. Our moto is making great men better and our lodge is open to all ages. Call Serge on 0456 666 641.

Restoring Hope Parkinson's Therapy: A not-for-profit charity delivering speech therapy to people living with Parkinson's disease to improve quality of life through individual and group therapy. Our vision is to restore the lives of those impacted by Parkinson's and empower living with INTENT.

Nambour & Districts Parkinson's Support Group: A peer-to-peer support group for people living with Parkinson's disease and their carers. Paulette Montaigne, Coordinator, phone 0498 200 055.

Blackall Range Lions Club: President Peter Jensen 0434 070 232, blackallrangeions@outlook.com, www.facebook.com/blackallrangelionsclub, www.brcl.org.au. We are locals aged 30s-80s who serve the Blackall Range communities & have fun doing it. Come join us! We meet on 2nd and 4th Thursdays.

Waverley Palmwoods Nambour Masonic Lodge No 249 UGLQ: Freemasons from Woombye Masonic Centre warmly welcome adult men of all ages, races, religions, cultures and backgrounds. We are keen to encourage the next generation of Freemasons who will help take the organisation and its valuable traditions into the future. Contact Roger Roberts Secretary. roberts3645@bigpond.com.

RangeCare: offers person-centred care to help keep community members independent at home. As a not-for-profit organisation, RangeCare has been supporting more than 2,000 people along the Range and the Sunshine Coast for more than 30 years. RangeCare offices can be found in Maleny, Flaxton, Gympie, and



Nambour. Since its beginnings in 1986, RangeCare has had a strong commitment to providing an exceptional level of care to the local community. The local community care provider offers a wide variety of services including nursing care, domestic assistance, social support, meal deliveries, minor home and garden maintenance and respite centres to the local elderly and

physically disadvantaged population. If you are considering your community care provider and would like to know more about RangeCare, call 5445 7044 or visit www.rangecare.com.au.

Woombye Community & Business Association: The WCBA celebrates our past, our present and plans for Woombye's future. We have fantastic businesses in town, and all around us at Kiel Mountain, Diddillibah and West Woombye. There's our farmers, creatives, artisan food and drink makers, and home-based businesses. Woombye is blessed with so much passion and talent. WCBA meets once a month on Tuesday evenings. For info and membership contact woombyecommunity@gmail.com.

Nambour Toastmasters Club: Located in Nambour, we provide a friendly and supportive environment for you to: Overcome any fear of public speaking, Increase your self confidence

Learn to communicate effectively, Develop the skills of an effective leader, Learn formal meeting procedures, All in a friendly place whilst having fun. Contact: Wendy McLean 0491 113 145 for further information.

SPORTS CLUBS ...



Woombye Snakes Football Club: Established in 1968 the club caters to boys and girls from under 6 through to senior football. We are focused on player inclusion and participation, as it is our belief that enjoyment of football is the ultimate goal.

Mapleton Tennis Club Inc: A small, friendly, low fees club catering for all levels of players from primary school age to over 60s. We have lights on 2 good synthetic courts. An enthusiastic coach is available for new and returning players. For full details search Mapleton Tennis.

Nambour Bowls Club Inc: Contact: Bowls Coordinator 5441 1076 nambour-bowls@gmail.com. The Club welcomes experienced and new bowlers of all ages to its wonderful facility at 76 Coronation Avenue. Free coaching, use of bowls for beginners and night bowls played in season so "Come n Try" Lawn Bowls. Other community groups welcome at the venue.

Yandina Bowls Club (Club Yandina): Contact Leon Granzien (Chairman) 0439 895 027, www.yandinabowlsclub.com.

On Friday nights, join us for a game of barefoot bowls, enjoy our live music, dine in the Bistro or have a drink with friends. Our venue is also for hire. Whatever your preference, we have something for everyone.

Nambour Rugby League Club: The Nambour Rugby League club was formed in 1985 with the amalgamation of two Nambour based leagues sides, the Souths Magpies and the All Whites. And 37 years later the club still fields competitive and passionate sides from the Under 7's through to Division 1. 22 Crusher Park Drive, Nambour, nambour-crushers@outlook.com.

Nambour Toads Rugby Union Club: Formed in 1981 the Toads were a foundation member of the Sunshine Coast Rugby Union competition. In 2023 the club expanded the number of teams representing the Toads in both senior and junior men and women. Our men's and women's senior teams both won their respective grand finals. Our home ground is Victory Park, Laidlaw Road, Woombye; president@nambourrugby.com.au, www.nambourrugby.com.au.

Hinterland Blues Australian Football Club: Hinterland Blues AFC is a family-orientated and social community club promoting AFL by supporting the development of its members in a fun, fair and safe environment. President: Bruce Bell 0438 485 487, Senior Coach: Phil Birchmore 0409 950 733. Jubilee Drive, Palmwoods, info@hinterlandblues.com.au, hinterlandblues.com.au.

Nambour Piranhas Swim Club: Nambour SC, the Piranhas, is the oldest swim club on the Sunshine Coast and provides exceptional opportunities, training and development to young swimmers. nambour@widebayswimming.org.au.

Nambour Yandina United Football Club: NYU is a Sunny Coast based sports club that values teamwork, perseverance & family. Join the Red Army. Our home ground is at 8 North Street, Yandina, 0448 899 447, admin@nyufootballclub.org.au.

Palmwoods Warriors FC: The Warriors are affiliated with the Sunshine Coast Churches Soccer Association. Our home ground is at Jubilee Drive, Palmwoods and is one of the more picturesque grounds on the coast, with 2 small fields for the U6 to U8, a 3/4 field for the U9 & U10, and a full size field for U11 up. 0497 777 176, secretary@palmwoodswarriors.com.au, palmwoodswarriors.com.au.

Maleny Golf Club: Maleny Golf Club operates a quality, award-winning, 18-hole community golf course. New members and visitors are always welcome. Golf clubs, pull buggies and 36 motorised carts available for hire. Phone 5499 9960, book online at GolfMaleny.com or visit us at 15 Porters Lane, North Maleny.

Golf Programs Australia Incorporated: GPAI is a Nambour-based charity using golf to "Drive Inclusion and Break Isolation" specifically for individuals living with an intellectual disability. GPAI operates a retail store & charity pro-shop at 89 Currie Street Nambour, 5476 0365, admin@gpai.org.au, www.gpai.org.au, www.pitchin.golf.

LET US TELL YOUR STORY

Grow your business in print & online in next year's
Nambour & Hinterland Business Directory.

by editor Cameron Outridge

THE Nambour & Hinterland Business Directory is a directory with a difference. Most directories are full of ads. This one is full of stories.

That's because people love reading stories. But also because behind every small business is a story worth knowing. We truly believe that. And the proof is plain to see within these pages.

The thing is, businesses exist to solve problems and people (readers) love looking for solutions to their problems. That's what makes business stories compelling.

So we hope you will love reading this directory and keep it handy as your 'go to guide' to local businesses. We've tried to make it as appealing and engaging as we can.

It is a publication where local businesses have joined forces to promote themselves, individually and as a whole.

In its printed form it is a product that brings advertising closer to locals. It allows businesses to present their offerings as part of an appealing and hyper-local constellation.

Why is your story so powerful?

Business stories combine the power of a news format, the human angle and local relevance to create a memorable, customer-targeted message. We use a journalist's perspective to focus on the key points of your business that will appeal to your customers.

A well-written story can position you as the expert in your industry, somebody your prospective clients will seek out to do business with. Better yet, a business story can provide your entire marketplace with an undeniable reason to buy.

In the age of online distraction and overwhelm, it's still the words that people read or hear that encourage them to buy.

But they have to be interesting and presented in a customer-oriented way. We hope we've achieved that with this directory.

Yes, most businesses are on the internet. But the web is a big place and it doesn't suit all businesses all the time. What's more it's getting bigger, it's getting more crowded and it's getting more expensive and time-consuming.

We're seeing advertisers returning to print for these reasons. They want to reconnect with local people in a format that gives their business proximity and credibility and drives traffic to their website.

Whatever you've worked hard to create



Cameron & Tanya Outridge introduced the concept of the Directory to the Nambour Chamber of Commerce earlier this year.

— a product, a business, a non-profit — you cannot launch it with hope alone. You need people to know about it. Stories in print are memorable and make all your other marketing work better.

Best of all the businesses in these pages will also be promoted online at NambourDirectory.com.au.

We'll reprint articles in the Gazette (printed and online versions) as well as via our socials and email list.

The idea is to help nurture an active Nambour and Hinterland business ecosystem online, and in print.

Finally and most importantly we want to thank our foundation advertisers for their leap of faith, support and patience as we brought the magazine to life. We are proud and encouraged by the calibre of enterprising, hard-working, independent

small businesses we have attracted.

It started out as an idea and thanks to them it's become a publication that we believe will service this community and its businesses for years to come.

Please enjoy the stories, support the businesses and let them know you found them in the Directory.

If you missed this year's publication, make sure you're a part of next year's Directory.

Contact Tanya at tanya@sunshinevalleygazette.com.au or 0400 069 711 so we can start promoting your business, in the Gazette and online and then in the Directory.

**tanya@sunshinevalleygazette.com.au
0400 069 711
Nambourdirectory.com.au**



Live
LOCAL
Shop
LOCAL



FREE 3 HOUR PARKING



35 Specialty Stores | Open 7 Days | Ann Street, Nambour | www.nambourplaza.com.au | 5441 5656



ROVER RIDE ON MOWERS

HUMM90 INTEREST FREE NO DEPOSIT MAX TERM 36 MONTHS • ZIP PAY INTEREST FREE NO DEPOSIT MAX TERM 60 MONTHS

FREE LOCAL DELIVERY • COMPLEMENTARY 4 LITRES OIL (2 LITRES "RIDER MODELS") FOR 1ST SERVICES

SALE

RIDER

24" ROVER MICRO RIDER
RRP-\$3,099 **\$2,999**

30" MINI RIDER 6 SPEED MANUAL
RRP-\$3,299 **\$2,999**

30" MINI RIDER HYDRO
RRP-\$3,799 **\$3,599**

24" DECK 30" DECK 5+5 WARRANTY



42" DECK

ZERO TURN

42" ROVER RZ42 ZERO TURN
679CC V TWIN
RRP-\$7,099 **\$6,299**

46" DECK

46" ROVER RZ46 ZERO TURN
21.5V TWIN KAWASAKI
RRP-\$8,399 **\$7,499**

5+5 WARRANTY

UP TO 2 ACRES

RAIDER

36" CUTTING DECK
439CC ROVER ENGINE
RRP-\$3,999 **\$3,799**

5+5 WARRANTY

42" DECK

LAWNKING

42" ROVER LAWNKING
KAWASAKI ENGINE 18HP V TWIN
RRP-\$5,399 **\$4,999**

UP TO 3 ACRES

42" ROVER LAWNKING
KAWASAKI ENGINE 21HP
AUTO DIFF LOCK V TWIN
RRP-\$6,299 **\$5,899**

5+5 WARRANTY



* SUBJECT TO AVAILABILITY *



CUB CADET RIDE ON MOWERS

HUMM90 INTEREST FREE NO DEPOSIT MAX TERM 36 MONTHS • ZIP PAY INTEREST FREE NO DEPOSIT MAX TERM 60 MONTHS

FREE LOCAL DELIVERY • COMPLEMENTARY 4 LITRES CUB CADET OIL FOR 1ST SERVICES

ELECTRIC CUB CADET RIDE ON MOWERS

BOTH WITH 6 YEAR WARRANTY INC BATTERIES.



CC 30 E RRP-\$6,799 **\$6,399**

6 YR WARRANTY 30" CUTTING DECK ELECTRIC POWER



LT 42 E RRP-\$9,999 **\$9,499**

6 YR WARRANTY 42" CUTTING DECK ELECTRIC POWER



ZERO TURN ULTIMA LAP BAR

ZT1 42" PRESSED DECK RRP-\$7,599 **\$6,999**
21.5HP V TWIN KAWASAKI ENGINE

42" FABRICATED DECK RRP-\$8,299 **\$7,699**
21.5HP V TWIN KAWASAKI ENGINE

46" FABRICATED DECK RRP-\$8,799 **\$8,299**
23HP V TWIN KAWASAKI ENGINE

ZT2 54" FABRICATED DECK RRP-\$10,299 **\$9,499**
23HP V TWIN KAWASAKI ENGINE

ZTX5 48" FABRICATED DECK RRP-\$13,999 **\$13,499**
54" FABRICATED DECK RRP-\$14,899 **\$14,399**
60" FABRICATED DECK RRP-\$15,899 **\$14,999**

3 YR WARRANTY ZERO TURN



New Model

ZTXS4 54" FABRICATED DECK RRP-\$14,899 **\$13,999**
ULTIMA STEERING WHEEL

ZTXS5 54" FABRICATED DECK RRP-\$15,199 **\$14,699**
ULTIMA STEERING WHEEL

ZTXS5 60" FABRICATED DECK RRP-\$16,199 **\$14,999**
ULTIMA STEERING WHEEL



XT1 42 RRP-\$5,199 **\$4,599**

LX42 XT2 RRP-\$6,999 **\$6,699**
24HP V TWIN KAWASAKI

New Model

LX42 XT2 RRP-\$6,999 **\$6,699**
PUSH BUTTON START TRACTION CONTROL

LX46 RRP-\$7,599 **\$6,999**
679CC V TWIN EFI CUB CADET ENGINE



PRO Z

PRO Z 148S RRP-\$16,999 **\$15,799**

PRO Z 154S RRP-\$17,499 **\$16,299**

PRO Z 560S RRP-\$25,199 **\$22,999**
while stocks last

PRO Z 760 RRP-\$27,499 **\$25,499**
while stocks last

PRO Z 972S RRP-\$30,799 **\$27,999**
while stocks last

972 SDL RRP-\$36,499 **\$32,999**
while stocks last

BEACON BUT NO LIGHTS. SELF LEVELLING SEAT

ZTS1

4 WHEEL STEER

42" FABRICATED DECK RRP-\$8,899 **\$7,999**

46" FABRICATED DECK RRP-\$9,599 **\$8,999**

3 YR WARRANTY SYNCHRO STEER

* SUBJECT TO AVAILABILITY *



North Coast MOWER CENTRE

07 5441 5455 | 36 Coronation Ave, Nambour

www.northcoastmowercentre.com

Mon - Fri: 8am - 5pm | Sat: 8am - 12pm