

Thinking of Selling?

We can get you the best price for your property

Call us on 5446 7333



People power saves Barn on Flaxton

“AMAZING community support” has helped save a much-loved Flaxton business from closure after lease negotiations broke down and then rose from the ashes last week.

On Sunday (June 5) The Barn on Flaxton was days from closure as their lease was due to expire. Then came an outpouring of community support online.

By Wednesday afternoon tears turned to cheers in a remarkable turnaround that saw the lease renegotiated.

“The community concern and amazing support has saved us,” said Ange Bowen who co-owns the business with husband Jason and Danielle Birks. “We had so many well wishes and prayers. This was an absolute saviour to our business. We always knew we had a really great community up here, but this was overwhelming. Customers were crying and many came to help us pack when all looked lost.”

“It’s been surprising in that the quietest little customers have come in and supported us and been quite vocal,” said Danielle. “We do a lot of charity work and community work which means the Barn has become a community hub and I think that support has been returned to us in a very real way. It wasn’t just empty offers it was practical, immediate hands-on help.”

Jason said the team strived to give the Barn a warm, homely atmosphere. “And we hope the



Continued Page 2 “It’s hard to even explain how grateful we are”: Barn on Flaxton owners Danielle Birks, left, and Jason and Ange Bowen are back in business.

New Primary School

Suncoast Christian College reveals details of innovative campus

SUNCOAST Christian College has unveiled plans for its innovative new primary school campus.

Designed by m3 Architecture, the campus features the most advanced school buildings on the Sunshine Coast. It has been designed

specifically for a collaborative ‘team-teaching’ model that replaces traditional classrooms with flexible learning spaces.

The building will accommodate years 1 through 6, with the students split into three cohorts, each taught by a team of six teachers

and teachers’ assistants in spaces with dedicated and adaptable learning zones over two levels.

A tiered seating area in each of these cohort zones will connect the two levels, allowing students to move between floors. Each cohort will

have its own maker space and kitchen. An art room and performing arts space will service the whole primary school.

The new building will be wrapped in a

Continued Page 4

Caloundra Scrap Metal

All cars, trucks, machinery

Removed CASH for some

Scrap metal bins supplied

Caloundra Scrap Metal
1300 132 013

SUNSHINE STEERING
Steering up front

RTA No. AU49451

David & Tina Ledger P 5478 8020 F 5478 8850

Power Steering • Suspension • Wheel Alignments
Child Restraints • Roadworthy Inspections
Tyre & Balancing • All Mechanical Service & Repairs
Air Conditioning • All Brake Repairs
We also sell nuts, bolts and tyres.

4/27 Main St, Palmwoods, Qld 4555

Sunstate Gearbox & Diff Service

Specialising in:

- Manuals
- Differentials
- Automatics
- Tailshafts
- Transferscases
- Clutches

OBLIGATION FREE APPRAISAL

5 Charles Court, Kunda Park
Ph: (07) 5476 8911
www.sunstategearbox.com.au

PROPERTYLANE REALTY
RESIDENTIAL | RURAL | COMMERCIAL

COAST TO COUNTRY

PROPERTY MANAGEMENT & SALES
(07) 5442 1855 | propertylane.com.au

gatherer
LIVING KINDLY

NOW SELLING
GERMAN BAKEHOUSE BREADS & PASTRIES AND EUMUNDI COFFEE

German Bakehouse EUMUNDI COFFEE

SEE WRITE UP PAGE 11

1 HOWARD STREET NAMBOUR ON THE CORNER OF CURRIE ST 0410 58 7171 gathereraustralia.com.au

KEYLINE REALTY

NO ONE ELSE SELLS MORE HOMES IN NAMBOUR
* AS RANKED BY REALESTATE.COM.AU #1 IN NAMBOUR

OPEN 7 DAYS

5441 2511 Cnr Howard & Queen Sts, Nambour

SCAN FOR YOUR FREE MARKET APPRAISAL

SUNSHINE VALLEY Gazette

Editorial

If it matters to you, it matters to us. Send your news to Cameron Outridge 0409 424 487 editor@sunshinevalleygazette.com.au

Advertising

To advertise contact Tanya Outridge 0400 069 711 tanya@sunshinevalleygazette.com.au

Designer

Katie Buckley: katiebuckley@live.com

Distribution

10,000 copies are distributed to popular pick-up points throughout the hinterland including at Palmwoods, Woombye, Nambour, Chevallum, Eudlo, Mooloolah, Hunchy, Yandina, Maleny, Montville, Flaxton, Mapleton and Forest Glen.

Gazette in Print, Email, Online & Facebook

The Gazette is Printed Fortnightly & Online Always. A pdf form of the printed paper can be found on our website. Stories are also posted on Facebook, on our blog and via email to our subscribers.

Editorial Policy

Every endeavour is made to publish submissions but we can never guarantee that any article will definitely appear. We prioritise constructive news which strengthens the community fabric.

Our broad aims are to:

- Connect the Community.
- Acknowledge Achievement.
- Back Business.

We encourage respectful & constructive debate on local issues in our letters section.

Thanks to our Advertisers

The Gazette is completely funded by our advertisers who make community journalism possible. Without them, there would be no Gazette. Please support them and let them know you found them in the local paper.



Rugby league player Nancy Sullivan is looking forward to playing at Suncorp Stadium but... "I'll be very nervous because it's a much bigger crowd than I'm used to".

Schoolgirl to represent State at Suncorp

RUGBY league player Nancy Sullivan admits she'll be very nervous running onto Suncorp Stadium for Queensland Schoolgirls against New South Wales in a curtain raiser to the third State of Origin on July 13.

After all the Murri and Islander Leader at Nambour State College will be playing for a spot in the Australian School Girls side.

But the 16-year-old lock/second rower who is vice-captain of Palmwoods Devils Under 17 girls team and plays in Nambour Crushers

Open Women's team will be buoyed by the thought of wearing maroon for her family, her clubs and for her home town of Cherbourg where she lived until recently.

"I am passionate about football and so happy to be selected in the team. I'll be very nervous because it's a much bigger crowd than I'm used to but I'm proud to have come this far and I think it will be okay," she said at Nambour Crushers training on Tuesday night (June 7). "When I make a rep side it means a lot to me because it shows my sib-

lings a pathway they can follow to fulfil their dreams and it shows my community what's possible," the oldest of seven said.

Nancy now lives in Woombye with her mum and dad and siblings and her life revolves around a blossoming rugby league career. "I like to help out around the club," she said. "I do a bit of coaching and give advice to the young players about tackling and passing and I take some drills."

Nancy was looking forward to mixing in the rarified atmosphere

Suncorp which will be the first-ever Schoolgirls clash against New South Wales.

"We get to pick out who we want to hand the jersey to us. I'm hoping to get indigenous player Tamika Upton from the Broncos," she said.

► Nancy is trying to raise funds to help pay for her accommodation, transport and football gear. If you wish to help her fulfil her dreams please contact her parents Kenny Sullivan (0423 930 073) or Loretta Chambers (0492 453 638) for more information.



MORNINGSTAR DIGITAL

YOUR LOCAL WEB DEVELOPER

Mention this ad for a locals discount

1300 392 542

M11 / 65 Currie St, Nambour 4560

www.morningstardigital.com.au

From tears to cheers ... Flaxton favourite celebrates reprieve

from Page 1

customers feel that," said Jason. "We like to think it's more than a cup of coffee here. We've made true friends in this business. They're not just customers, they become part of a family. We don't want people to feel like they're just a number.

"The locals are our bread and butter. The main message we want to get across is to thank the community. Their voices were heard, loud and clear, and we are very grateful."

"We did the post on Sunday night and then cried," said Ange.

"And then everything turned around thanks to our customers."

"It's hard to even explain how grateful we are," said Danielle.

The Barn was much more than a coffee shop venue, according to Kevin McAney, a Flaxton resident and a volunteer for Restoring Hope Parkinson's Therapy and Nambour and District Parkinson's Support Group.

"It has definitely become somewhat of a 'Community Hub' and a place that the locals enjoy going



to and feel welcomed every time. Ange, Jason and Danielle, together with the staff, have given so much back to the local community and dedicated their lives to the business.

"They have been a huge support

to Restoring Hope and the local Parkinson's community. It would have been a tragedy if they could not continue. I am so glad that the community decided that they would take action. We could not lose the 'Barn-acles'."

Staff celebrated with a special dinner Sunday night. It turned into a triple-celebration as it was Jason's 50th birthday on Monday June 6 and the business's three-year anniversary on June 10.

► The Barn on Flaxton is at 445 Flaxton Drive, Flaxton, thebarnonflaxton@yahoo.com, 5400 2444.

Brady's Fruit

FRUIT & VEGETABLE SPECIALIST

• Wholesale & Retail •

Col & Sandy Pearce

Ph/Fax 07 5445 9260

Park at your leisure where shopping is a pleasure

Woombye-Palmwoods Rd. Palmwoods. Q. 4555



Earthmoving • Cranes • Trucks • Hydraulics • Attachments



GR FLEET SERVICES

DIESEL MAINTENANCE & REPAIRS

We service and repair all makes of earthmoving machinery, cranes and trucks.

From Warranty Servicing to hydraulic hose repairs we have you covered.

FULLY EQUIPPED WORKSHOP + FIELD SERVICE

Authorised Dealers



169 Nicklin Road, Palmwoods • 5457 3066 • grfleet.com.au • f



Medieval, Crusaders, Mercenaries and Artisans (MCMA) is a collection of like-minded individuals who come together to replicate Medieval life.

Medieval re-enactment group brings middle ages to life

A medieval re-enactment group says a growing number of people are choosing to ditch the chaos of modern life and return to a simpler time.

Medieval, Crusaders, Mercenaries and Artisans (MCMA) is a collection of like-minded individuals who come together to replicate as closely as possible what life would have been like during a Medieval time.

The group has been meeting for around two years and currently trains fortnightly at Cilento Park Nambour learning everything from the art of war to the arts and crafts of the time.

"We have members in our group who have been in the scene for 20 years right up to others that have joined just this year," said President Michael Geppert.

"We accept people with all levels of interest — from people who want to just dress in period clothing and hang out at the 'Village' and learn medieval craft activities, right up to tournament level competition fighters. We have recently made an alliance with the Sunshine Coast Vultures. This group fight in a Buhurt competition league which is a world-wide sport. Think judo, but with armour and swords."

MCMA recently received funding for promotion and equipment from the Sunshine Coast Council. "This funding has also allowed us to hire a hall within Nambour's PCYC so we can train weekly no matter the weather. We will be training together at the PCYC on Saturdays from July 16."

MCMA attends different events throughout the year, most of which are during the cooler months. "Some are private events with other



Armoured swordsmen go medieval at Cilento Park.

re-enactors, but we also are working towards attending the Abbey Medieval Festival at Caboolture which is on July 9 and 10," said Michael.

Members have many different reasons for joining the group.

"All have at least a general interest in the Medieval period but there are many facets to this. Some like history, some like the fashion, some like the crafts like weaving, textile making and metal and timber work while others enjoy the fighting and fitness," said Treasurer Kris Johannessen.

"Members say it gives them a chance to experience something they would not get a chance to do in their everyday lives," said Kris. "Some enjoy the personal growth they achieve from practicing their skills."

"Our members are all very supportive and love to share their knowledge with new members when they join and the public while at events."

► If you are interested in the medieval period, the Club will welcome you with open arms at the Nambour PCYC every Saturday from July 16. For info email Michael Geppert at mcma.inc@yahoo.com.



The Denture Care Group

Sunshine Coast

Caloundra | Maleny | Woombye



BEFORE



AFTER

MAKE THE MOST OF YOUR HEALTH FUND THIS YEAR CONTACT US TO FIND OUT HOW

Book a Consult with us this month so we can help you get the most out of your benefits and have you leave smiling.



Aaron Pryor

P 07 5442 1721

HINTERLAND VIEW DENTAL 6 Hill Street, Woombye

denturecaregroup@gmail.com



DO YOU VALUE YOUR TEETH?

Healthy Teeth, Healthy Smile

At Hinterland View Dental we will look after you.

- Locally Owned and Operated
- Experienced and Friendly Staff
- Serene Environment

NO GAP or 50% off all Check Ups and Cleans

Complementary Orthodontic and Cosmetic Consultations



www.hinterlandviewdental.com.au

6 Hill St, Woombye

(opposite the Woombye Bowls Club)

Call 5442 2378



Hinterland View
DENTAL

ASPHALT & BASE CONSTRUCTION

CALL JOSEPH 07 5478 9834 | 0402 932 159

38 YEARS EXPERIENCE FREE QUOTES



RED BROWN & BLACK ASPHALT | MACHINE & HAND LAID HOTMIX ASPHALT

- CAR PARKS
- SALES YARDS & DISPLAY AREAS
- DRIVEWAYS
- TENNIS COURTS
- FOOTPATHS, KERBS
- GRAVEL ROAD
- CRACK SEALING
- PRIVATE ROADS
- SPEED HUMPS
- MODERN, STYLISH EDGING
- EXCAVATIONS & DRAINAGE

www.asphaltbaseconstruction.com.au

New primary school for Nambour

• from Page 1

specially designed steel mesh, allowing air and natural light to stream through.

It will provide flexible and collaborative learning spaces where a team of dedicated Christian teachers will provide inquiry-based teaching to equip students for a future world where creativity, communication and critical thinking skills are essential.

The open teaching spaces will be zoned and furnished to allow for a variety of teaching modes, with different configurations for different stages of learning and subjects. Teachers will be able to effectively and intuitively tailor lessons to the abilities and learning needs of individual students.

The school's principal, Greg Mattiske, said team-teaching delivers the best social, emotional and academic outcomes for students. "Today's students have diverse needs," he said. "It's too much for one teacher to have the burden of trying to meet all these needs on their own. Better outcomes for students can be achieved when we work as a team."

The staff have been involved in the design process and it's been very much designed around the school's vision for learning. "This project has gone way beyond our expectations," said Mr Mattiske. "I want children, staff and parents to come to the school and feel excited about this facility."

Founded on reclaimed farming land in Woombye in 1979 as the Suncoast Christian Academy, the school's first building was an old pineapple packing shed. From such humble origins, down through generations bound by the mission of seeing students grow in their faith, character, and learning, the new campus will be a fitting affirmation of the school's legacy and special character.

"Such forethought about the campus, as a space designed to facilitate the highest educational outcomes, reinforces how Christian education should go hand in hand with aca-



Key leaders attended a turning of the sod ceremony last Wednesday June 8.

demical excellence," said Mr Mattiske. "Students will have both a Christ-centred and world-class education."

The school teaches more by stage than age, with learning based on a child's level in each subject. The building has been designed to accommodate teams of teachers and teacher assistants working together with students in large, medium and small group configurations. The flexible nature of the facility means that spaces can accommodate groups of five pupils up to 100.

The new campus is phase one of a 25-year master building plan. It envisages and allows for future capacity as the school looks to add an additional 100 students. There are currently two classrooms for each grade, and the aspiration is to increase that to three without changing the integrity and community focus of the school.

Funding for the project will be provided through the College's governing body, the International Network of Churches, bolstered by a modest contribution from the State

government, ensuring the onus will not be on parents to shoulder any undue burden.

About Suncoast Christian College

Suncoast Christian College is a Prep to Year 12 Christian co-educational College with Pre-Kindy and Kindergarten, located in Woombye on Queensland's Sunshine Coast. Established in 1979, the College is known for its sense of community and true commitment to excellent Christian education for Sunshine Coast families.

Every child's educational journey is unique and Suncoast believes in guiding its students to achieving their personal best in an environment that values a love of learning. Students benefit from a team of dedicated Christian teachers who believe in developing academic potential and character with high-quality pastoral care and attention given to the wellbeing of every student.



Little Austins rolling in to Nambour and hinterland

THE Austin Seven Register of Queensland is holding a small informal gathering in Nambour from Wednesday June 22 to Monday June 27.

People will be able to see the cars out and about as they are doing runs up to Maleny, Yandina, Kenilworth and Palmwoods.

The Austin Seven Register was founded in 1967 in Brisbane to cater for Austin 7 enthusiasts, and has held motoring events from the Tweed up to Bundaberg and out to Longreach!

The cars are usually driven rather than trailed and have attended events, organised by other clubs within Queensland and other States.

This little car proved to outlast all its contemporaries, being in production for over 25 years, and being so adaptable to design changes.

Long after the last car rolled off the production line, it continues to be the basis of a variety of motoring interest groups. For info contact Tim Braby 0405 740 418.

Two speakers to feature at next PCBA meeting

EVERYONE is invited to Palmwoods Community & Business Association's next meeting which will feature two interesting local guest speakers.

Division 5 Councillor Winston Johnston and Compass Institute CEO David Dangerfield will be speaking at the June 29 meeting to be held at Palmwoods Bowls Club from 5.30pm for a 6pm start. Grab yourself a beverage and socialise with some locals. There will be light refreshments available on the night.

PROTECT YOUR OUTDOOR AREA FOR ALL SEASONS



Keep out the weather and extend your living space.

Our blinds are retractable when not needed and are available in colours and styles to compliment your exterior scheme.

Available with spring, crank or motorised operation, they are hard wearing, and made to withstand our tough conditions.

Ours is a well established local family business with the experience to advise and install.

Our quality products are made to last.

MOBILE SERVICE
We come to you!

Local Hinterland Company

Call us for an on-site measure and quote. Our experts will give you the right advice about the best product for your project.

5494 6898

www.customcurtains.com.au

CUSTOM Curtains and Shade



Blinds • Awnings • Curtains • Shutters • Security • Umbrellas

Proudly serving the Sunshine Coast for over 16 yrs



DentalExcel

WE'RE HERE FOR YOU!



NOW OPEN FOR ALL PROCEDURES

In line with Stage 1 restrictions, we look forward to welcoming you back for ALL of your dental needs.

COVID-19 Screening measures in place to ensure safety.

Dental Excel is grateful for the dedication of our staff who have been there for your emergency treatments throughout this crisis. We are still here for you and still adhering to strict hygiene precautions to keep you and us safe.

Dental Excel is proud to be a part of the MARLEY DENTAL GROUP



DentalExcel

Bulk Billing Medicare Child

Dental Benefit Scheme for Eligible 2-17 yrs

• Family Dentistry • General Dentistry • Cosmetic Enhancements • Zoom® Teeth Whitening
• Veneers • Crown and Bridge • White Fillings • Preventative Dentistry • Children's Care
• Gum Disease Maintenance • Dentures and Veterans Affairs • Dental Implants



Payment plans available - no interest ever

Open Monday to Saturday • Early and Late Appointments

Ph: 5445 0166 2-4 Margaret Street, Palmwoods www.dentalexcel.com.au

Burger business bounces back with bold ambitions

DOWNTOWN Burgers is back at a new address, nearly four months after extensive rain damage caused it to close its doors.

"I had some big decisions to make," said owner Cam Scott. "Do we hold on and wait for some repairs to the old building or do we kick on in new premises."

Cam decided to move just up the road to 113 Currie Street, a building he holds dear to his heart. At the same time he plans to re-ignite familiar memories of the site's entertaining past.

It's where he ran the popular bar and eatery, Nook and Cranny, from 2015-17. It was the first live music venue in Nambour, serving pizza in a chilled-out atmosphere.

"No other place in town quite suited what we wanted to do and we've always loved this space," said Cam.

"We have plans to return the vibe back to its Nook and Cranny days with a bar, live music, comedy nights and more. We'll be operating late Thursday, Friday and Saturday nights. It would be a dishonour to anyone that had been to Nook and Cranny if we disregarded its past."

As if rebuilding the business wasn't enough, Cam also wants to expand the venue to include a rooftop beer garden function space within a year or two.

"At the end of the day we feel we have taken what was a negative and turned it into a really big positive," he said.

"We're super excited and can't wait. We're proud of our burger

restaurant but we wanted to make sure we were pushing forward. DownTown grew from nothing into something. We didn't want to leave what we had so we're combining what worked in the past, the nostalgia behind the old building, with what's working now."

Unfortunately, Cam was forced to close his fledgling gym Fit Yeah in order to accommodate the plans.

"It was a tough decision but one we had to make. I'm sure it was the right decision as we have big plans for this space.

"Besides we'd always wanted to change the design and look of DownTown Burgers and now we can do so."

Once the decision was made the kitchen was operational in three days. It has been up and running for two weeks, for takeaways and deliveries only. "The response has been amazing and we can't thank our customers enough. We can't believe the feedback and the support we have had. Nambour has helped us get through a really scary and unfortunate situation".

What won't change are DownTown's renowned burgers. "We're famous for our soft pretzel buns," said Cam. "Nobody else does anything like them. Competitors have tried to copy them but they never get it right. Ours are like a cross between an Amish pretzel and a New York bagel. They have the density to hold the ingredients of a big burger — still soft on the inside, with a golden crust— and we actually boil our buns, which



Cam Scott has bold plans to build on the success of DownTown Burgers by introducing the spirit of his former bar Nook and Cranny into the new premises.

gives it the unique pretzel flavour. We love these buns and we make them fresh every day. We are really excited to incorporate into our new kitchen a viewing platform, so people can see first hand what we love so much and what makes our burgers so unique."

Cam said there was plenty of activity bubbling under the surface in Nambour and looked forward to a bright future.

"From where Nambour was

five or six years ago the amount of offices that have moved in to town has been great. Retail spaces are being taken up by offices with more employees. They're replacing a few staff with dozens and that means more people in town."

► DownTown Burgers is open 7 days (currently only for takeaways) from 5pm-8pm. downtownnambour.com. Phone: 5441 1587.



The club will have a variety of model train layouts operating.

Model Railway Club train display

THE Sunshine Coast Model Railway Club Men's Shed is holding a model train display and sale day. The club will have a variety of model train layouts operating.

There will be over 30 vendors offering a wide variety of new and pre-loved locomotives, rolling stock and railway accessories at competitive prices. A test track will be available to test purchased locomotives.

Club members will be on hand to answer questions and give advice on all things that are model trains.

The restaurant car will be open and offering a variety of tasty food, coffee, tea and soft drinks. There will be a raffle drawn on the day as well as plenty of free railway magazines.

► It will be held Saturday June 25 from 8.30am-1pm at the Uniting Church Hall, Queen Street Caloundra. Admission is free. For more information, phone 5491 8988 or www.scmrc.org.au

Need legal advice about retirement living?

David Wise Solicitor

Specialist advice for residents and prospective residents of retirement villages, over 50's resorts, and manufactured home parks, including entry, exit, dispute resolution, Wills, Powers of Attorney and Estates.

0412 254 080 | principal@davidwisesolicitor.com.au
www.davidwisesolicitor.com.au

MEMBER Queensland Law Society.

URBAN DEPOT
cash for containers.

SUMMER HOURS

8AM - 4PM
MONDAY TO FRIDAY

8AM - 2PM
SATURDAY

9AM - 2PM
SUNDAY

HOW IT WORKS

- Urban Depot and the Containers For Change scheme makes getting paid for recycling easy.
- Collect your eligible containers and remove the lids.
- Enjoy the drive through recycling experience at Urban Depot!
- Let us unload, sort and count your containers while you stay in your car.
- We bring your cash refund to your vehicle or we deposit your refund into your scheme ID account.

THE ONLY FULL SERVICE CONTAINERS FOR CHANGE DRIVE THROUGH DEPOT ON THE SUNSHINE COAST!

FULL-SERVICE DRIVE THROUGH (NAMBOUR)
7/1 WINDSOR RD, BURNSIDE 4560
CALL 0492 846 936



“Creativity takes courage.”

– Henri Matisse

Yandina Art & Framing

Hand-crafted · Hand-selected · Creative · Unique · Artisan

How a local club is helping women in Uganda feed their children

THE soil in northern Uganda is some of the most fertile in the world. But many people simply lack access to resources to grow their harvest.

Women in Uganda are the caretakers of their family and when you invest in a woman, you invest in her household and her community.

That's the reasoning behind Zonta Club of Blackall Range's latest initiative.

They are throwing their weight behind Love Mercy Australia's *Cents for Seeds* campaign.

"This exciting project, a new one for our Club, will greatly assist women who are trying to make a better future for themselves and their families in difficult circumstances," said Zonta's June Robson.

"Everyone is invited to a morning tea to find out how we are supporting the *Cents for Seeds* project and also what else we do for the community, and you might meet some new friends."

Under the project, a \$30 gift provides a 30kg loan of seeds to a woman & her household in northern Uganda.

She is trained in farming and best agricultural practices and given a tool (a hoe) to use.

From an initial \$30 investment, she may see between 150-300kgs of harvest, offering income and food for the year ahead.

Through this project, she is taught how to maximise her income through income generating activities, how to save, what interest is and how to access welfare.

"The 30kg seed loan offers women the opportunity to earn an income, which can be turned into food, income, education & health-care," said June.

► The Zonta Club of Blackall Range Morning Tea will be held at the Mapleton Bowls Club on Friday June 24 from 10am. Tickets are \$20 and you can purchase on the day. Zonta is an international women's organisation supporting local and international projects. For info contact nellierobson@hotmail.com.



Flowers from the heart: From left, Fran, Glenda, Pamela, Jan, Marie, and Narelle at the Ukraine Crisis Appeal.

Nambour Garden Club launches Ukraine Appeal

NAMBOUR Garden Club has raised money and paid tribute to the people of Ukraine in a colourful show of support at the latest meeting.

Members were invited to bring blue and yellow flowers from their gardens and many decided to dress in blue and yellow as part of a Ukraine Crisis Appeal at the June 6 meeting.

Member Jan Bell came up with the idea to help refugees "as a symbol of our affection and respect for the Ukrainian people as well as our most fervent wish that their nation will once again know peace".

"We could all see what was happening to the poor people of Ukraine on the news and we're all wondering 'what can we do?'" said President Glenda Thorne. "This gives members the opportunity to do something positive and to donate some money for Red Cross that will certainly go to a good cause."

Representatives from Nambour Red Cross came to the meeting to collect the donations.

"Money raised will be donated to the Red Cross Ukraine Crisis Appeal," said Glenda.

"Under this appeal the International Committee of Red Cross (ICRC) is facilitating the safe transport of more than 1000 civilians from Mariupol to Zaporizhzhia."

"This convoy's arrival to Zaporizhzhia is a huge relief for hundreds of people who have suffered immensely and are now in a safer location," said Pascal Hundt, the ICRC's head of delegation in Ukraine.

"It's clear, though, that thousands more civilians trapped inside Mariupol need safe passage out and aid to come in. As a neutral intermediary, we're ready to respond to this humanitarian imperative once concrete agreements and security conditions allow it."

► Nambour Garden Club meets on the first Monday of each month (February to November) at Uniting Church Hall, Coronation Street, Nambour (9am for 10am start). The Club is affiliated with Garden Clubs of Australia whose motto, "Friendship through Gardening", they share. For information see Facebook or email nambourgardenclub@gmail.com.



It was a hive of activity along the banks of Petrie Creek on Saturday.

BushCare Bees bounce back after bad weather

ABOUT 25 workers gathered to plant 700 seedlings along Petrie Creek near Quota Park on Saturday in a World Environment Day Festival activity.

It involved Sunshine Coast Council, Ecollaboration and of course Petrie Creek Catchment Care Group volunteers.

The wet weather has affected BushCare Action Bees recently, but by swapping some days organisers have been able to do some important habitat building bush care.

Next opportunities to join us in these BushCare events on Petrie Ck will be at:

- Namba Creek on Saturday 18 June starting at 8am. (meet in The Model Railway Park off Florence St Nambour)

- Gulong Gung on Wednesday 22 June starting at 8am. (meet in the NE corner of the carpark at Aldi off Howard St Nambour).

To join in the activities at these events you'll need to come in "long everything" bush protective clothing including boots/shoes and a hat. All tools required will be provided.

► For more info see the FB Page @Petrie-CreekCatchmentCareGroupInc and www.sunshinecoast.qld.gov.au, "BushCare" or contact Norm Morwood 0409 63 99 44 or email normmorwood@gmail.com





NAMBOUR CHRISTIAN COLLEGE

PREP OPEN MORNING 9am Friday 17 June

Bring your child to our Prep Open Morning for a fun-filled Teddy Bear's Picnic. You can meet our experienced and nurturing team, hear about our signature programs and see our purpose-built Prep classrooms. NCC Prep delivers structure, learning and fun with a focus on the fundamentals of literacy and numeracy and play.

This event is for interested future families as well as families enrolled in Prep in 2023 and 2024.

Security. Support. Success.

Valuing what matters most

www.ncc.qld.edu.au

2 McKenzie Road,
Woombye QLD 4559

Call us today 5451 3333
enrolments@ncc.qld.edu.au

SPAR



WOOMBYE

Market Specials



\$3.50
EA.

Prepacked Brushed Potatoes 2kg
\$1.75 per kg



\$3.50
KG.

Royal Gala Apples



\$1.75
EA.

Prepacked Carrots 1kg
\$1.75 per kg



\$3.50
KG.

Navel Oranges



\$2
EA.

Prepacked Brown Onions 1kg \$2 per kg

LOW PRICES ALL DAY EVERY DAY



PAYLESS
EVERYDAY

\$20 kg.

Mixed Marinated Olives
From the deli



PAYLESS
EVERYDAY

\$16 kg.

Shoulder Ham *From the deli*



PAYLESS
EVERYDAY

\$12 kg.

Middle Bacon *From the deli*

SCAN TO SUBSCRIBE TO OUR LATEST WEEKLY CATALOGUE STRAIGHT TO YOUR INBOX!



Specials available Wednesday 15th June until Tuesday 21st June 2022

WOOMBYE

20 BLACKALL ST

OPEN 7 DAYS!

PH: 5413 8007



Specials available while stocks last. Limit rights reserved. We reserve the right to correct any printing errors and omissions.

Clouds offers choice of options for locals too

Business Writeup: Clouds Retreats

SYDNEY has its Blue Mountains, and Melbourne, The Dandenong and Macedon Ranges. But the jewel in the crown of South East Queensland must surely be the Sunshine Coast Hinterland. Of course, this is no secret to locals!

In 2018-19, the Clouds Retreats Group purchased what was then *Clouds of Montville* – now *Clouds Montville*, and subsequently *The Big Barrel* – now *The Barrel @ Clouds Vineyard, Tanglewood Gardens* – now *Clouds Mapleton*, and *The African Village at Balmoral Ridge*.

“Over the next year, substantial renovation and upgrade work was undertaken at all sites to bring them to the standard they are today and now offers something for everyone with a range from intimate and boutique to family friendly,” said Manager, Kaye Smyth. “Each venue has been carefully and painstakingly refurbished.

“All Clouds properties are positioned across the Range to offer easy access to both the Hinterland and the Coast.

“Our dining venues have been planned to provide easy access and parking, a warm, welcoming atmosphere, friendly service and superb regionally sourced food and drinks. We are so excited for locals and visitors to come and enjoy the Clouds experience.”

The Bergin Lounge takes its name from an early settler to the surrounding area, John Delaney Bergin, whose property included Obi Obi Station (or Uby Uby, as it was known then) which comprised 32 square miles and was purchased in 1859.

The property was eventually sold to his wife Jane’s brother Isaac Moore who went on to build Kenilworth Station.

The Bergin’s moved to Brisbane where they continued to make their mark on the growing city.

Clouds are now delighted to be able to offer the additional experience of a new look wine bar with Tapas style menu from 12 until 4.30



Manager Kaye Smyth soaks up the ambience of the Bergin lounge. It is not just guests who can enjoy Clouds facilities. They are available to everyone.

on Friday to Sundays and Public Holidays in the Bergin Lounge at Clouds Montville.

The ambience of the Bergin Lounge as well as the coastal vistas invite guests to relax in the warmth of the fireplace and elegance of its surrounds and enjoy a leisurely glass of wine and selection from the crafted menu.

“Today, shared plate selections have become very appealing as people are preferring to

sample different options as offered by the tapas style menu,” Kaye said.

“The past couple of years have been both exciting and trying,” she said. “But we have a great passion for this beautiful part of the world and are very optimistic about the future”.

► Clouds Montville, Bergin Lounge is at 166 Montville Road, Montville. Phone 5442 9174.



Deb Rowlands’ customers love the convenience of dropping off and collecting their alteration items whenever it suits. Demand has been such that it has required four lockers near her front door.

Sewing model born out of Covid goes from surviving to thriving

Business Writeup: Drop-Sew-Go

AS businesses return from the devastating effects of the coronavirus, Deb Rowlands, owner of *iSew4U Alterations & Dressmaking* is thankful to share her journey from surviving to thriving.

In April 2020, Deb adjusted her business by offering customers a contactless *Drop-Sew-Go* service model born out of necessity for business survival. Initially, a single drop box was made available to customers for services that did not require fittings. The service has proved to be very well-received by customers.

“I had always hoped that I could come back stronger but with Covid there were no guarantees,” said Deb.

“They love the ease and convenience of dropping off and collecting their items whenever it suits. It has become so popular that I had to expand, and I wanted to make it more secure for customers.”

The new *Drop-Sew-Go* is a four-door secure locker system.

“Each of the boxes are a substantial size to fit lots of items such as a dozen curtains for hemming,” said Deb. “Customers can drop off any time into any unlocked door.”

► When the alteration/repair service is complete Deb emails the invoice for payment and supplies a unique code for customers to access their items from the secure locker. For more information visit iSew4U.org/post/drop-sew-go or phone 0414 388 238.

‘Bronny the Dinosaur’ launch at The Little Book Nook in Palmwoods

A lovely time was had by all those attending the launch last month of local author, Jenny Fitzmaurice’s picture book, *Bronny the Dinosaur ... where’s my Mummy?*



It was a relief to see the sun out as it had previously been postponed because of rain.

The children were able to hear the delightful story about a baby dinosaur who gets lost and must retrace his footsteps to find his way back to his Mum.

The bright illustrations by Kimberley Coffey had them enchanted. There was also a collage of the dinosaur for the children to do in the lovely setting of the courtyard outside The Little Book Nook up the Lane next to Home Grown Café.

The book is still available at the Bookshop for \$16.99, along with lots of other books, games and lovely cards for all ages which can also be purchased and viewed online.

There are often events for the children and adults held in the charming space nestled in Little Main Street, Palmwoods.

International artist lines up at Art Festival

IMBIL abstract artist Pat Cale has attained international renown with work in collections in Australia and overseas. She is also a regular competitor at the Mary Valley Art Festival.

As planning is finalised for this year’s event on July 21-24 in Imbil, Pat is prepping her brushes to prepare her entries.

The festival is run by art organisation Mary Valley Artslink, and president Heinke Butt said Pat was among the elite artists attracted to the annual festival, which this year offers more than \$10,000 in prizes.

“We are very lucky to have her reside in the Mary Valley - she is a valued member of Mary Valley Artslink, as a mentor, previous judge and participant,” Ms Butt said.

Pat has been instrumental in sharing her deep understanding of life drawing with participants during regular life drawing sessions hosted by Mary Valley Artslink in Imbil.

Artists from throughout South-East Queensland are encouraged to enter before June 27. Entry forms and conditions can be found on the website www.maryvalleyartfestival.com.au

The festival will be held at the Imbil Public Hall from July 21-24, 10am-3pm daily, with

the gala opening night and awards on July 22. It attracts hundreds of visitors to Imbil and includes a poets’ breakfast on July 23.



Imbil abstract artist Pat Cale regularly shares her deep understanding of life drawing.

► A Long Sunday Luncheon with Soprano Donna Cain will be held on July 10 in Imbil. To fund the Suzie Smith Youth Encouragement Award for the festival. Bookings eatwell@thegreenbowledifice.com.au. Inquiries to Heinke Butt on 0419 024291 or email info@maryvalleyartfestival.com.au



NOW OPEN

Bergin Lounge @ Clouds Montville

TAPAS BAR

OPEN Friday, Saturday, Sunday and Public Holidays | Noon to 5pm



Why not make it a relaxing weekend with a stay at Clouds Montville?



Clouds Montville Café - Open Daily 8am - 5pm

TAKE AWAY

FUNCTIONS

WINE FLIGHTS

07 5442 9174

166 Balmoral Road, MONTVILLE

www.cloudsretreats.com.au

Water slide makes a splash at Nambour pool

NAMBOUR Aquatic Centre is one step closer to becoming one of the region's most exciting community splash parks with the installation of two giant new water slides.

The finishing touches are now underway on the Nambour Aquatic Splash Park, which is expected to open in the coming months, weather permitting, followed by an official opening celebration in the warmer September school holiday period.

The colourful new slides measuring 60 and 67 metres will join the zero-depth and fully accessible splash pad which is already open.

Sunshine Coast Council Division 10 Councillor David Law said he was thrilled to see the Nambour Aquatic Splash Park transform.

"The Splash Pad is very popular with families and we know the slides will be just as sensational when they open in the coming months," Cr Law said.

"The completed water-wonderland will be a major drawcard for the Nambour area."

Together with the Centre's existing 50 metre lap pool and 25 metre indoor pool, the new water play facilities will allow people of all ages to enjoy hours of healthy and active fun.

The \$3.26 million investment includes the recent addition of 44 new car parking spaces, a zero-depth splash pad play area and two adventure slides.

The Nambour Aquatic Centre is one of nine council-owned aquatic centres across our region.

► For more information about the construction of Nambour Aquatic Centre's Splash Park, please visit council's website.



Classic Aussie movies showing in Maleny

THE Maleny Blackall Range Lions club is holding a movie afternoon at the Maleny Community Centre featuring two historic Australian classics.

They are the multi-award winning Australian docudrama movie, *The Back of Beyond* and *The Last Mail from Birdsville* (each about one hour in length). They'll be shown Sunday July 3 at 2.30pm at the Community Centre.

The Back of Beyond was released in early 1950 and was seen by thousands of Australians. When Queen Elizabeth II saw the movie, she awarded truck driver Tom Kruse an MBE. John Heyer's 1950's Aussie adventure film following Tom Kruse along the Birdsville Track was the winner of the Absolute Grand Prize at the 1954 Venice International Film Festival and nominated for a 1955 BAFTA film award for Best Documentary Film.

The second docudrama, *Last Mail from Birdsville: The Story of Tom Kruse*, is from 2000 when Tom Kruse drove the last mail from Birdsville in his original restored truck followed by 400 people from Birdsville to Adelaide. He carried over 7000 letters.

Lions Club member Ralph Ding has a family connection with the mailman driver Tom Kruse.

► Tickets www.trybooking.com/CAAYT

Yandina School of Arts Historical Bus Tour

YANDINA School of Arts are holding an informative local historical bus trip on Friday June 24.

The tour will visit important landmarks that include: Yandina Station, The Rocks, Dunethin Rock, Coulson's Wharf and Old Cobb & Co Lane, the site of Cobb & Co's depot on the banks of the South Maroochy River. You will learn how the Maroochy River was a highway for goods and transport for local residents, how early settlers opened the land and what enterprises started our local region.

The tour group will gather at 9.30am for a 10am start from the Yandina School of Arts (11 Farrell Street, Yandina) and return back to that point at 12pm where lunch will be provided.

► Cost for the tour and lunch \$25. Bookings: Phone Lucia on 0449738880 or email treasure-rysoa@gmail.com

Sponsorship applications

CLOSING SOON

Applications close 30 June 2022

If your community group is from the Palmwoods area and would like to apply, please speak to one of our team members for more information.

No applications will be accepted after the 30th June.

Heritage | Palmwoods
Community Branch

Visit your local community branch at Palmwoods Plaza or call 07 5294 0600

Freeze & Heat Meals

Delivered to your doorstep every Friday!



SPECIALS

AVAILABLE UNTIL 30.06.22

17. **Lamb rogan josh**
Mildly spiced tomato curry with aromatic spices, served with rice
18. **Chicken korma**
Mildly spiced aromatic curry with coconut cream and almonds, served with rice



Single Serve **Double Serve**
\$9.90 \$18.00

GF = Gluten free | DF = Dairy free | VEG = Vegetarian

MAIN MEALS

	Single Serve	Double Serve
1. Marinated seed mustard & rosemary roast beef - GF DF Served with roasted vegetables & gravy	\$9.90	\$18.00
2. Crispy skinned lemon & herb roast chicken - GF DF Served with roasted vegetables & gravy	\$9.90	\$18.00
3. Tender roast pork loin - GF DF Served with apples, roasted vegetables & gravy	\$9.90	\$18.00
4. Beef lasagne Lean beef bolognese layered with bechamel, pasta & cheese	\$9.90	\$18.00
5. Oven baked beef rissoles & gravy - GF DF Served with buttered potatoes & seasonal vegetables	\$9.90	\$18.00
6. Braised steak & mushrooms in gravy - GF DF Served with herb butter potatoes & seasonal vegetables	\$9.90	\$18.00
7. Corned beef sauteed onion & fresh herb white sauce - GF Served with steamed vegetables	\$9.90	\$18.00
8. Cottage pie - GF DF Lean beef & vegetables sauteed in gravy & baked with creamy mash potato & seasonal vegetables	\$9.90	\$18.00
9. Malaysian satay chicken - GF DF Mild creamy curry served with rice	\$9.90	\$18.00
10. Stirfried chicken & hokkien noodles - DF Stir fried in asian sauce with peanuts	\$9.90	\$18.00
11. Creamy coconut Indian veggie & chickpea curry - GF DF VEG Mild, served with rice	\$9.90	\$18.00
12. Vegetable lasagne - VEG Seasonal vegetable in napolitana sauce with bechamel, baked with cheese	\$9.90	\$18.00
13. Spinach & ricotta cannelloni pasta - VEG With napolitana sauce, baked with cheese	\$9.90	\$18.00
14. Pork & beef italian style meatballs With red wine, tomato & herb fettuccine, topped with parmesan	\$9.90	\$18.00

SOUPS

	Single Serve (Large Portion Size)	
15. Creamy potato, leek and bacon soup - GF DF A blended soup of locally smoked bacon, sautéed potato, leek, fresh herbs & cream	\$6.90	
16. Cream of roasted sweet pumpkin soup - GF DF A wholesome soup of roasted sweet pumpkin, sweet potato, sautéed onion celery & carrot & coconut cream	\$6.90	

HOW TO ORDER?

Call 07 5445 7044 OR order online via the link below:

<https://www.rangecare.com.au/freeze-and-heat-meals>

Minimum order of 5 meals applies.

Customers over the age of 65 and NDIS participants are eligible for Free Delivery.

Proof of eligibility may be requested by the RangeCare staff.

All other orders will be subject to a \$15 delivery fee.



Groups urged to apply for Sundale Community grants

NAMBOUR and local community groups in need of cash grants are encouraged to visit the Sundale Community Foundation (SCF) website to apply for the 2022 Sundale Community Foundation grants round.

SCF was established in 2015 by Sundale Ltd with the aim of extending the charitable influence of Sundale through financial grants for worthy projects in Nambour and surrounding areas. \$1 million was gifted by Sundale Ltd to kick-start the Community Foundation; and thanks to the Sundale Community Foundation Board of volunteers that money has been carefully invested. Earnings from those funds are distributed to community grants each year.

"In October 2021 we celebrated 12 local community groups who received more than \$57,000 in funds," said SCF Chair, Caroline Hutchinson. "The last two years have been challenging for our community, our Board of Volunteers has endured, and once again has money to distribute in 2022."

SCF is also putting the call out to local businesses or individuals wishing to make a donation. Community partners are invited to be part of our grants selection process, and know that their tax deductible monies will go to a Nambour organisation or charity in need.

The 2021 grants have benefited local organisations, with some wonderful support provided with grants between \$1000- \$10,000.

► Visit the Sundale Community Foundation website www.sundalecommunityfoundation.org.au for information on how to apply for grants, become a community partner or to make a donation.

Positive news for you

THE *Sunshine Valley Gazette* tries hard to represent our local world as it is, not as the media in general tends to portray it.

Mainstream media paints a very distorted and bleak view of the world. You'll find our pages full of positive local events, achievements and happenings. It's reality, really.

Let us know what you think or send your news to editor@sunshinevalleygazette.com.au.

Gatherer announces debut of German Bakehouse bread

Business Writeup: **Gatherer, Nambour**

BREAD lovers will be happy to know that German Bakehouse loaves are now available from Gatherer, on the corner of Howard and Currie Streets, Nambour.

"I just love German Bakehouse bread," said Gatherer owner Debra Lawson. "It is a staple of my diet. It is baked with traditional recipes that have been used for over 50 years. The range and quality are outstanding, and the bread is wonderful value. It's real food."

Debra will be stocking loaves of their classic rye/wheat and white sourdough on the shelf, plus Danishes.

"Otherwise, people can order online from the bigger range, and it will be available for pick up from Gatherer on Wednesdays. This will guarantee they get what they want every time," she explained.

"The German Bakehouse will also be supplying me with salad bowls and Mediterranean grilled veggies for takeaway lunches," said Debra. "I am excited to be serving delicious Eumundi coffee and the Noosa Power Ballz range of healthy slices. It's nice to be able to offer food that is quick, healthy and delicious!"

"Right now I can only serve takeaways but I will be getting a little bar area built inside and applying for a dining licence once Council brings that in next month. So seating is coming soon."

Besides being a place to grab great coffee and now sourdough breads and pastries, Gatherer stocks affordable, beautiful designer boutique fashion, footwear, groceries, cold drinks, unique gifts, makeup, skincare, jewellery and much more.

"I love the fact that there are so many fabulous privately-owned businesses in Nambour, especially in and around the CBD," said Debra.



Deb Lawson now offers fresh German Bakehouse bread.

"And it is terrific to see locals rediscovering what is on offer. After a very trying couple of years, I know that small business owners like myself really appreciate the support of our local residents and we work hard to provide offerings that are quality and unique."

► Gatherer is at 1 Howard Street, Nambour (on the corner of Currie Street). Phone 0410 587 171. You can order German Bakehouse bread at gathereraustralia.com.au

Giant celebration in Palmwoods for Refugee Week

OVER 30 community groups gathered at Palmwoods to create a giant, colourful welcome message to show that the Sunshine Coast welcomes refugees.

The giant art and social media project on June 4 at Federation Park, Palmwoods was coordinated by the Sunshine Coast Refugee Action Network during Refugee Week.

"The great thing about this project is how many different groups jumped on board - from schools to climate action groups, artists to multicultural groups," said SCRAN member Lisa McDonald. "Everyone was very enthusiastic and took this opportunity to find out more about refugees."

Photos of the individual letters being created were posted on the SCRAN facebook page, along with messages from the various groups involved. On 20 June, World Refugee Day, drone footage of the complete message will be posted.

The giant message will go on display at the Sonder Gallery in Cooroy from 18 - 25 June, as part of a free exhibition of art by refugees, including those formerly detained on Nauru.

Refugee Week, 19 to 25 June, is Australia's peak annual activity to inform the public about refugees and celebrate the positive contributions made by refugees to Australian society.

► Information about the Art Exhibition can be found at www.sondergallery.com. More information about Refugee Week can be found at www.refugeeweek.org.au

Compass Café relaunch

ONE of Compass Institute's first Social Enterprises, Connections Cafe is being re-launched with a bold new look.

Connections Café offers Compass trainees a safe space to learn, grow and contribute back to the community. The renovation of Connections was completed with the support of local designer Danni Morrison, local artist Ross Holloway and a team of dedicated Compass staff, construction powerhouses and the generous support of local businesses and business people, namely Cricks Sunshine Coast.

ELITE FOOT CARE
Podiatry • Orthotics • Footwear

Online Bookings Available

Call Elite Foot Care on
5328 3588
to book
your appointment

www.elitefootcare.com.au
For online bookings

DO YOU HAVE FOOT AND LEG PAIN?

The team at Elite Foot Care can treat:

- Heel Pain
- Achilles Pain
- Shin Splints
- Knee Pain
- Hip Pain
- Lower Back Pain
- Arthritis
- Ingrown Nails
- Kids Podiatry

• Private Health Rebates • Medicare Rebates
• DVA Registered • NDIS • Workcover
• Home Care Packages • No Referral Needed

4/40 Wilson Avenue, Woombye
Corner of Blackall Street and
Nambour Connection Rd

OPEN HOURS: Mon-Fri 8:30am - 5pm www.elitefootcare.com.au

GOODYEAR
AUTOCARE *Good to go*

ALLCOAST
TYRE SOLUTIONS

22 Coronation Ave, Nambour

Ph: 07 5343 8344

(Opposite the Nambour RSL)

Providing the right advice, the right product and best value for money in tyres and services while meeting budget and understanding your driving style.

OUR SERVICES www.allcoasttyres.com.au

TYRE FITTING
Car, SUV & 4WD's
Mowers & Wheel Barrows

- Tyre Repairs
- Tyre Rotations
- Wheel Alignments
- Fleet Tyre Servicing & Management
- 24/7 Commercial Mobile Tyre Service

(All Tyre brands available)

Locally owned by John & Peter O'Leary

Ask us about our 25% off tyre deals!



What's On in the Hinterland

Local Sport, Events and Entertainment coming up. Preference given to local events of widespread interest. Please check details with organisers. Submissions to editor@sunshinevalleygazette.com.au.

Markets

- Every Saturday: **Yandina Country Market** from 6am to 12pm, North Street, Yandina.
- Every Saturday: **Kenilworth Country Markets** from 8am to 1:30pm at Kenilworth Town Park, Charles Street.
- Every Sunday: **Maleny Art, Craft and Collectables Markets** 8am to 2pm Maleny RSL.
- Second Saturday of the month: **Montville Growers and Makers Market**, 7am to 12 noon at the Village Hall. Enquires: Liz 0424 042 376 or Visit montvillevillageassociation.org.au
- Fourth Saturday of the month: **Mapleton Country Markets** at Mapleton Hall, 8am-12noon. Phone Paula 0419 726 603 or email country-market.mapleton@gmail.com.
- Third Saturday of the month: **Witta Growers Markets**, 7.30am-12noon, 50+ stalls, enquiries: wittamarket@gmail.com

Events

- Until July 9: **"Ruminare"**, an exhibition of clay vessels, is showing at the Old Ambulance Station, 80 Howard St Nambour, until July 9.
- June 15: visit historic 1907 Historic **Pattimore House** on an Open Day 1-4 pm, Porters Lane, North Maleny.
- June 17: Nambour Christian College **Prep Open Morning**. "Come & Prep at NCC Morning" from 9am. Phone 5451 3333 or info@ncc.qld.edu.au for more information.
- June 17: **The Night Parrot** presented by Maleny Arts Council at Maleny Community Centre. www.Malenyartscouncil.com for tickets.
- Saturday June 18: **Nick Vulture** plays from 7pm-11.30pm at the Black Box Theatre, 80 Howard St Nambour. For tickets go to: www.humanitix.com/au and search "Nick Vulture".
- June 18: **Bushcare working Bee** at Namba Creek on starting at 8am (meet in The Model Railway Park off Florence St Nambour).
- June 18 and 19: **Graceville Art Festival**: Create Together, Belong Together at St Luke's Lutheran Church, 10 Sydney St, Nambour. Info:

www.lutheranservices.org.au/graceville-art-festival or 07 5441 4682. Saturday 9am-4pm. Sunday 9am-3pm.

- June 18 and 19: The Maleny Singers are bringing back Franz Lehar's timeless classic, **The Merry Widow**. Tickets for the Maleny Community Centre event are selling at Maleny Information Centre or via Trybooking.com/BZBED.
- June 20 & 21: The **Mobile Donor Centre** visits Maleny every 3 months at the Showgrounds, 13 Maleny-Stanley River Road. The next visit is set for Monday 20 June 7am-2pm Tuesday 21 June 11.30am-6pm.
- Wednesday June 22: **Bushcare Working Bee** Gulung Gung starting at 8am (meet in the NE corner of the carpark at Aldi off Howard St Nambour).
- Friday June 24: Zonta Club of Blackall Range are holding a morning tea in at the Mapleton Bowling Club to launch their **"Cents for Seeds"** initiative to help families in Uganda.
- June 24: Yandina School of Arts is holding an informative **local historical bus trip**. Bookings: Phone Lucia on 0449 738 880 or email treasure-rysoa@gmail.com
- Friday June 24: **Nambour Forecourt Live!** from 3.30pm-8.30pm including storytime from 3.30pm; creative workshops from 4pm-6pm; Face painting and Live music from 5pm with Mayah, JC & the Tree and Jason Daniels Band, Food trucks and Licensed bar.
- June 25: Sunshine Coast Animal Refuge **Markets**. Bring Your Dog For A Fun Day Out! 8am to 2pm.
- June 29: **Palmwoods Community & Business Association's** meeting at Palmwoods Bowls Club from 5.30pm for a 6pm start. Speakers Cr Winston Johnston and David Dangerfield (Compass Institute).
- July 1: **Jonas and Barry in the Home** starts on Friday July 1st at the Lind, 16 Mitchell Street in the heart of Nambour. There will only be six shows, including two matinees. Go to www.lindlane.com.au/whats-on or phone 1300 732 764.
- Friday and Saturday July 1 & 2: The Black Box Theatre at the Old Ambulance Station in Nambour hosts **Les Femmes de la Boite Noire**. Bookings through Trybooking (www.trybooking.com/BZKEU
- Sunday July 3: **Barefoot Bowls** Christmas in July at Mapleton Bowls Club. Maple Weddings/Events along with Lisa Brereton are hosting a twilight barefoot bowls on the green at Mapleton Bowls Club followed by a beautiful Xmas in July buffet dinner with Penfolds.

Tickets now on sale for massive Rangebow Festival

THE Rangebow Festival is the newest and largest festival to arrive in the Hinterland.

Organisers say its aim is to celebrate diversity, inclusiveness, sustainability, creativity and reconciliation.

It will be held across the Blackall Range communities over four days from Wednesday 10 August until Saturday 13 August 2022.

"The festival is designed to appeal to everyone; no labels, no acronyms; because everyone matters; everyone belongs," said Festival Director Wayne Parcell.

Wayne's team have curated a program offering over 30 events, including some free. "There's Cabaret shows, Moonlight Symphony with Sunshine Coast Symphony Orchestra and the Golden Days performance at Nambour Cinema."

For something completely different you can take a Walk on the Wild Side for a guided walk through the emerging Barung Seed Forest and learn about native plants, garden design and wildlife or discover the the world of the Platypus in Obi Creek.

"For attendees looking for a First Nations gourmet experience, award-winning indigenous chef Aunty Dale Chapman will deliver a food and culture experience at Flaxton Gardens that will take you far, far away with Forage Fire Feast," said Wayne.

Glass House MP Andrew Powell said the first Rangebow Festival was an event not to be missed. "There's been nothing else quite like it in the

Hinterland, with so many different experiences on offer. I'm personally keen to check out the Forage Fire Feast and Moonlight Symphony."

The Enchanted Garden is a free, ticketed event in the Village Green, Montville on three afternoons from midday to 5pm, offering entertainment for everyone.

There's live music, poetry, in-conversations with Australian Olympians, stories from First Nations people, climate specialists and even an equine therapist.

Princess Diana's Dream Analyst, Joan Hanger, will also be in the garden to take you on a journey through the life of your dreams.

For a truly captivating dreaming experience of the world's oldest culture, join Jinibara Culture Man BJ Murphy who will enthrall you with the Glass House Mountains dreamtime stories, with the ancient lands in sight from Mary Caircross Reserve, Maleny.

Another family fun free day is the Bunya Bears Brunch with First Nations performances, hip-hop dancers, local food producers, roving entertainment and prizes for children who dress up.

There's an intimate opera experience in the exquisite Montville Chapel called The Chapel of Love and will welcome Opera Queensland stars accompanied on piano by award-winning Luke Volker, a composer and pianist.

► For more info and tickets please visit www.therangebowfestival.org

Tis' the season ... for barefoot bowls!

CHRISTMAS lovers are invited to experience the magic of winter on the Range, coupled with some barefoot bowls, as Mapleton Bowls Club celebrates *Christmas in July* on Sunday July 3.

Guests will be encouraged to dress up in their best Christmas costume for Barefoot Bowls and a Christmas dinner at the popular club. The private event is being organised by wedding planner Kristy Aitken and celebrant Lisa Brereton, whose daughter and son (respectively) play bowls at Mapleton.

Christmas in July at the Bowls Club seemed like a great way of giving back to the commu-


nity, said Kristy.

"We have a live musician (John Veloso) who plays at weddings and we're using a catering team that cater for weddings," she said. "So, we're using those we know and love to work with to bring a fun event together. We are playing bowls for two hours then heading inside for some prizes, drinks and a *Christmas in July* buffet dinner with dessert."

• It's on July 3 from 3pm. Dinner is 6pm. Cash bar available. To book your table or ticket click the link at www.trybooking.com/BYRHV or contact 0409 624 401 for more info.

SACRED Body

INITIATE TRUE WELL-BEING




Relax Re-Connect Rejuvenate

Massage
Far Infrared Sauna
Waxing
Lash & Brow Tinting
Chakrapuncture

0419 175 425 | sacredbody.com.au | f @

8 LITTLE MAIN ST PALMWOODS




"CELEBRATION OF LIFE" SERVICES

Celebrate the life of your loved one in tranquil and elegant surrounds.
Enjoy a morning tea or light lunch with guests - tapas style or sit down meal.

INCLUSIONS

- Easels for Signage or Photo Boards
- Barrels and Pillars for Flower Arrangements
- PA System with Microphone
- Food Displays or Roaming
- Barrels, Stools and Lounge area for Seating
- Coffee and Tea Station
- Water Station

MEMORIAL SERVICE VENUE PRICING

Winery Hall (100+ guests)	1,000.00
Outside Arbour Area (100+ guests)	750.00
Barrel Room (50 or less guests)	500.00

FOOD OPTIONS

Catering options are available from our on site restaurant so we are able to cater for small intimate gatherings to large celebrations.

TERMS

Designated use area - 3 hours | Minimum - 30 guests
Subject to availability | Bookings Only

07 5445 7450 | 313 Flaxton Drive, FLAXTON | info@flaxtongardens.com.au | flaxtongardens.com.au



Nick Vulture: "My music involves raw storytelling that engages the audience through the whole show."

Adelaide singer to play at The Black Box

WITH his solo acoustic venture, Nick Vulture has moved into territory that couldn't be any further removed from his roots in the garage punk scene of Adelaide, South Australia with his band *The Molting Vultures*.

The singer-songwriter is currently on a national tour to launch his new album *Dust Off The Trails*. It includes a show in Nambour at the Black Box Theatre with local Americana duo *Those Folk*.

Nick's album spent five weeks in a row on the national AMRAP charts.

After 18 years of leading *The Molting Vultures*, Nick is revelling in the 180 degree turn with his first full length solo album. "My music involves raw storytelling that engages the audience through the whole show, in the true tradition of the singer-songwriter," he said.

► Saturday June 18, 7pm-11.30pm at the Black Box Theatre, 80 Howard St Nambour. For tickets go to: www.humanitix.com/au and search "Nick Vulture".



Graceville Centre client Jason Rosendahl has been painting for many years and loves to work in bold colours, drawing inspiration from what he sees around him and from his imagination.

Graceville Art Festival brings exhibition to St Lukes Church

WORKSHOPS, market stalls and an art exhibition will feature at this year's Graceville Art Festival on June 18 and 19.

The annual event attracts a wide line up of local artists. It includes art displays, art workshops, market stalls, and fun.

Held at St Luke's Lutheran Church in Nambour, it is a celebration of diversity and inclusion with art displayed within St Luke's church.

Graceville Centre in Nambour is part of Lutheran Services and offers mental health and disability support, as well as onsite Supported Independent Living.

Local artist Deby Taylor began painting about six years ago following a stroke.

The stroke gave her the motivation to pick up a paintbrush.

"Through yoga and meditation I met a

couple of different people who referred to me a group (of artists), many who had contact with Graceville," she said.

"I'd had a stroke and just decided that now was the time, stop putting it (painting) off."

She showed 11 paintings in the exhibition.

Another keen artist at the event was Graceville Centre client Jason Rosendahl.

Jason has been painting for many years and loves to work in bold colours, drawing inspiration from what he sees around him and from his imagination.

• June 18 and 19: *Graceville Art Festival: Create Together, Belong Together* at St Luke's Lutheran Church, 10 Sydney St, Nambour. Info: www.lutheranservices.org.au/graceville-art-festival or 07 5441 4682. Saturday 9am-4pm. Sunday 9am-3pm.



Two of Paula Bowie's large clay vessels on display at the Old Ambo.

Celebration of Clayworking at the Old Ambo

RUMINATE is the title chosen by Paula Bowie for her exhibition of clay vessels at Nambour's Old Ambulance Station. Paula has lived in Coolool for 12 years, but before that she lived "off the grid" on a gold mining lease in Far North Queensland.

She learned pottery in the 80s when she studied under Stephen Harrison in New South Wales.

Living up north in Palmer River country, she found herself inspired and fascinated by geological formations, and these play a large part in her art. There she found a love of using natural materials.

Paula makes clay vessels, and enjoys making large ones, using found ochres and oxides.

Most of the works on display in this exhibition have been made over the past twelve months while Paula was undergoing radiation and chemo therapies to treat cancer.

Paula estimates that during this time she would make a pot every day, and take another day to finish it. Many of her vessels are based on primitive ancient shapes, which she alters to reflect her own style. Her work has filled the gallery, and she loves the space of the Old Ambo.

► *Ruminate* is showing at the Old Ambulance Station, 80 Howard St Nambour, until July 9. Opening hours are from 10am until 3pm, Monday to Saturday.

LIVE PAIN FREE WITH BOWEN THERAPY

Do you suffer from neck pain, back pain, sciatic pain, pain after surgery, hormonal pain or headaches?

Bowen therapy involves gentle stimulation of muscles, tendons, ligaments or nerves at specific points to encourage the body to self-repair.

Leanne Sippel Bowen Therapist can help with:

- Neck / Shoulder Pain
- Lower Back Pain
- Pelvic Realignment / Tight Psoas
- Headaches
- Respiratory / Sinus Issues
- Gastrointestinal Tract Issues
- Fatigue
- Inflammation
- Knee pain / Stiffness
- Hormonal Balancing

Integrated Healing Therapies Located at **Woombye Chiro.**
Leanne Sippel, BHSc Homeopathy
Dip Specialised Bowen Therapy
Phone 0438 684 705 for an appointment and live pain free

NAMBOUR NEWS & CASKET

WE FIX MOBILE PHONES

- Stationery
- Magazines
- Lotto & Instant Scratch Tickets
- Newspapers
- Gifts

We can home deliver your newspapers and magazines and we are also agents for Cartridge World.

Shop 28, 52-54 Currie St, Nambour
P: 5441 2029 | @NambourNews

THE BEST EXPERIENCE EVER

Roger Loughnan and his team were absolutely amazing. His level of experience and knowledge made for a smooth purchasing experience. We are so very happy with our new land, and look forward to a life-time filled with loving memories in Montville. Thank you Roger!

Review submitted by Craig Muller (Buyer) on 1 May 2022

07 5478 5288 "People who Care" **OPEN 7 DAYS**

Shop 2, Cnr. Obi Obi & Post Office Road, Mapleton

rogerloughnanrealestate.com.au

VERIFIED BY RATEMYAGENT

If you are looking to sell your property and want results CALL Roger Loughnan Real Estate

HAPPY HEALTHY SMILES

\$199* welcome offer

Blackall Terrace Dental NAMBOUR

New patient welcome offer

TOTAL COST: \$199*

- Comprehensive exam
- Oral cancer screening
- Intraoral photography
- All necessary x-rays
- Scaling & polishing
- Topical fluoride
- Treatment planning

Call to book or go online **(07) 5441 3583**
blackallterrace.com.au

Scan to book your next visit.

*New patients only. T&Cs available online. Valid to 30.03.22.

The Great Walk For Parkinson's 2022

Home Instead, Restoring Hope Parkinson's Therapy and Parkinson's Queensland wish to thank The Barn on Flaxton and Montville Mist, Dog and Gun Coffee for their tremendous support during Parkinson's Awareness Month in April, and sustaining the walkers during our Great Walk For Parkinson's 2022.

Together with the tremendous assistance from these businesses and the support of local organisations and the Parkinson's Community we raised \$8482.00 to provide assistance and raise awareness for those living with Parkinson's

The Great Walk For Parkinson's 2022 was a collaborative event to celebrate Parkinson's Awareness Month in April, and 10 Sunshine Coast locals completed a trek through The Great Walk in Mapleton National Park commencing on Monday 4th April over 2 days with an overnight camp under canvas. During the trek our fantastic sponsors, The Barn on Flaxton, Montville Mist Springwater, and Dog & Gun Coffee generously donated meals, water and coffee to keep up our strength on the journey.

The group of walkers united with clear goals; to form a reliable network of quality support for locals and to raise much needed funds to enhance resources and care for people living with Parkinson's Disease.

All key organisations have a committed focus to enhancing the lives of older Australians, providing a range of tailored services, including specialised therapies, individualised support and a suite of in-home care services, all designed to assist people maintain their independence as they age, or as they begin to live with new health challenges.



Restoring Hope Parkinson's Therapy, a local not-for-profit charity, is an ACNC registered charity, dedicated to preserving the voices of people with Parkinson's through quality, evidence-based intensive speech therapy, follow-up support and education. Restoring Hope Parkinson's Therapy, has a well established reputation for delivering the Parkinson Voice Project therapy programs SPEAK OUT® and the LOUD Crowd®, while Home Instead is committed to developing solutions for people who want to remain living in their own homes long term.

Home Instead are proud to have just received the 2021 Sunshine Coast Community Award for "Excellence in Aged Care".

Parkinson's QLD is also recognised as another strong not-for-profit organisation, focused on directing resources and funding to support groups, awareness and educational projects, carers and research! They are active members of Parkinson's Australia.



The Walkers Who Took Part:

- Louise Williams
Restoring Hope Parkinson's Therapy
- Chantel May
Restoring Hope Parkinson's Therapy
- James Rickards
Home Instead
- Rachael Anderson
Queensland Health Nurse Navigators
- Ryan Gee
Queensland Health Nurse Navigators
- Elena Morrow
The Allied Health Team
- Sandra Gerschwitz
Parkinson's Queensland (Young Onset Parkinson's)
- Kevin McAney
Parkinson's Queensland
(Nambour and District Support Group)
- Andrew Powell
Member for Glass House
- Rob Skelton
Member for Nicklin
- Aggi Skelton
Aged Care Support Worker





The Woombye Community Bank Branch believes in supporting our local community.

Since opening in 2009 we have donated more than \$200,000 to help assist local groups and events.

We love our town and we know that successful people create successful communities.

When you chose to bank with us, you are choosing to help support the Woombye community.

#welovewoombye #banklocal #BendigoBank

Proudly Supporting

- Nambour Rugby Union Football Club
- Woombye Community Library
- Kiel Mt Rural Fire Brigade
- And many more
- Woombye State School
- Woombye Men's Shed
- West Woombye Rural Fire Brigade

Secure your appointment today, by visiting in person or calling us on 5442 1311

Connect with us





Nambour Forecourt Live! Friday 24 June

THE next *Nambour Forecourt Live!* Event will be held Friday 24 June. The schedule includes:

- Sunshine Coast Library storytime from 3.30pm
 - Creative workshops from 4pm-6pm Free Face painting, Donut Decorating, Mosaic Workshop with Brett Campbell and a Coconut weaving workshop
 - Live music from 5pm with *Mayah, JC & the Tree* and *Jason Daniels Band*.
 - Food trucks and Licensed bar by Tram Co.
- Event concludes at 8.30pm
- BYO picnic rug

This is a free community event sponsored by Sunshine Coast Council.

Yandina Country Music

YANDINA welcomes the vibrant Kerri O'Keefe as guest artist at the ACMA country music concert on Sunday 19th June. Kerri has a wide repertoire of songs and you'll swear that you are listening to the original artists! With talent, full-on energy and a big personality, guaranteed you will be highly entertained!

See you at the Hall of Fame, 24 Steggalls Road. Doors open 10.30 am, concert starts at 12 noon. You'll be entertained with traditional country, including more diverse, crowd-pleasing favourites with a great house band. Walk-ups welcome. Raffle and door prizes, byo lunch, free tea and coffee. Entry \$8. Come along and enjoy a great afternoon! Enquiries 0437 191004.

Now Showing at Majestic Cinemas

HERE'S what's showing now at Majestic Cinemas in Nambour.

Now Showing: *Topgun: Maverick*; *Jurassic World: Dominion*; *The Diver's Wife*. Coming soon: *Lightyear* from June 16 and *Elvis* from June 23.

We also have the *Spanish Film Festival* running from June 4-26.

► For more information on session times please visit www.majesticcinemas.com.au or phone 5441 2954.



Nambour Bloomhill Op Shop Volunteer Michael Mills and his wife and store manager Lyn look forward to welcoming customers during the Appeal.

Bloomhill aims to bounce back from Covid sales drop

BLOOMHILL Cancer Care this month launched its *Be There for Bloomhill Appeal*, seeking community support to bounce back from big drop in op shop income due to the COVID pandemic.

Bloomhill is the biggest community-based cancer support organisation on the Coast.

Each year it supports around 1100 clients through its nursing care and provides over 800 allied health care and wellness appointments at the centre in Buderim.

"If there is one year to support Bloomhill it's this year," Chief Executive Officer Christopher John said.

"We are preparing to redevelop our wellness centre from five to 14 therapy rooms so we can help more people, but the post-COVID building crisis is creating significant challenges.

"The op shops which supply about 75 percent of the charity's income (in a normal, non-COVID year) have this year had sales dip so low Bloomhill was until recently eating into its savings to keep afloat.

Bloomhill is turning 25 years old this year and planning an expansion from five to 14 therapy rooms, including a new gym and redeveloping its café, to meet the growing demand for our care services.

When people donate, they are helping to support new clients touched by cancer who seek support at the centre every week. It costs an average \$1454 for Bloomhill to provide nursing care support per client for one year. That's roughly \$125 each month.

In the first 6-12 months after a cancer diagnosis most clients need to undergo extensive cancer treatments.

Some will need to have surgery, most will have some form of chemotherapy and many require follow-up radiotherapy, medication and rehabilitation activities. Our nurses are highly trained in oncology and are central in developing the right individualised care plans for our clients.

Many of our clients are facing financial hardship and often need immediate support in many different practical ways.

When you donate you are helping us provide practical support to clients, carers and children facing extreme financial hardship.

► Your donation is gratefully received and makes a huge difference to the support Bloomhill provides those touched by cancer. All donations over \$2AUD are fully tax-deductible in Australia. To donate visit www.bloomhill.com.au



Director Simon Denver is delighted to have been asked to produce this work.

Kabaret to feature Coast's finest female talent

SUNCOAST Repertory Theatre is proud to announce its next production is *Les Femmes de la Boite Noire* (Women of the Black Box).

It is a multi-layered 12-woman Kabaret featuring some of the finest female talent ever assembled on the Sunshine Coast.

As time hurtles towards the first 25 years of the 21st Century it can seem as if life itself is in a state of flux.

This Kabaret explores this flux from a female perspective. Sound, vision, music and theatre collide in this bittersweet, poignant, sad and yet funny Kabaret.

It's raw and real and might just prick your conscience, it might just touch a nerve, it might tickle you and it might slap you - but what it will do is entertain you.

The cast and creatives are Rachel Fentiman, Jo Hendrie, Cardie Boydell, Mary Egglestone, Rebecca Stephenson, Angel Goulter, AJ Wildey, Ali Lamboli, Caitie Alice, Anna MacMahon, Ninnie Lines & Joy Marshall. With Simon Denver - Director, Paul Clement - Guitarist

This ensemble (for the statistically minded) has over 340 collective years' experience.

Director Simon Denver is delighted to have been asked to produce this work as part of the Old Ambulance Station's Takeover initiative.

Denver firmly believes that following on from works like *The Curators "The Swan"* and *D.I.V.E* theatres *"Caprichos"* it will really help brand the Black Box as the Coast's home for quality Independent Theatre.

► The Black Box Theatre at the Old Ambulance Station in Nambour hosts this production, a perfect intimate venue for an intimate show. Dates are Friday July 1st (Eve), Saturday July 2 (Matinee and Evening). Bookings through Trybooking (www.trybooking.com/BZKEU)



HOMEWARES



VINTAGE

A curated collection of beautiful Vintage and new homewares, jewellery & gift lines.

Enjoy our retail store & Chew Chew - licensed bistro, a relaxed dining experience right on the tracks.

Tel 5479 6603.

3-5 Main Street, Palmwoods Qld 4555

OPEN

TUESDAY TO SUNDAY 7.30AM TO 4PM.



BISTRO



www.theshedsca.com.au



An Evening with Irving cast members rehearse, from left, Karine Wilson, Judith Bandidt, Barbara Porter and Ronda Vijsma. Below: Roy Gasson, Karine Wilson and Bob Holden show their jazz style.

The timeless music of Irving Berlin comes to Palmwoods

DURING July, Palmwoods Singers' Little Village Theatre will present three performances of *An Evening with Irving*, a song and dance show celebrating the music of Irving Berlin, the American composer who played a leading role in the evolution of popular songs from the 1920s and 30s ragtime and jazz eras through the golden age of musicals in the 1940s.

Over a long career that spanned six decades, (1907-1966) Irving Berlin wrote more than 1,200 ballads, dance numbers, novelty tunes and love songs, many of which became standards that are still favourites today. Berlin also wrote the scores for nineteen Broadway shows and eighteen motion pictures. His talents earned him the admiration of his peers and accolades from his audiences, as well as many awards honouring his contribution to music. Songs such as *There's No Business Like Show Business*, *Blue Skies* and *White Christmas* are among the most popular songs ever recorded.

Palmwoods Guide Hut, transformed into 'The Blue Room' 1920s glitzy nightclub, is the venue for *An Evening with Irving*. Performances will be held on three consecutive Saturdays with July 16 and July 23 performances beginning at 5pm, followed by a 3pm matinee on



July 30. Patrons are encouraged to dress in the fashions of the era and enter the spirit of the high energy show.

► Tickets are \$25 which includes the show, grazing platters, sweets, tea and coffee. Other drinks are BYO. For bookings call Moira on 0409 026 145. Booking is essential. Seating is limited and early booking is encouraged, with tables of four a convenient way to enjoy the occasion with friends. For further information email: ourlittlevillagetheatre@gmail.com.



Rosie (Rochelle Cameron) is not having much luck convincing Barry (Andrew Moon) to take some exercise.

Jonas and Barry in the Home: a very heart-warming play

LIND Lane Theatre in Nambour presents *Jonas and Barry in the Home*, a hilarious and heart-warming play about friendship and family.

Barry Butterfield has moved into the seniors community Gateway Gardens at the insistence of his daughter Rosie, who also works there as a Lifestyle Consultant. Rosie doesn't want him living alone in case he has a heart attack, like his father, brother, and uncle did before they were sixty-five.

Barry feels he can't fit in until he meets Jonas Ainsworth, an outgoing and oddly irrepressible character with a slightly mysterious past, who is determined to get to the heart of what ails Barry.

This "odd couple" themed play penned by famous Canadian Norm Foster premiered in Ontario in 2015 and the original production toured for several years. It has now become available for community theatres and Joy Hinckley is very pleased to be directing the Australian premiere at Nambour's Lind Lane Theatre.

► *Jonas and Barry in the Home* starts on Friday July 1st at the Lind, 16 Mitchell Street in the heart of Nambour. There will only be six shows, including two matinees, so we suggest that you book early to avoid disappointment. Go to www.lindlane.com.au/whats-on or phone 1300 732 764.

The Night Parrot

QUEENSLAND Music Festival's *The Night Parrot* tells the story of a species believed to be extinct for nearly a century.

Then, just recently, it was spotted nestled amongst the spinifex in regional Queensland.

The Sunshine Coast Chamber Music Festival and Maleny Arts Council are proud to present this magical production which combines glorious music, storytelling and visual art.

The Night Parrot plays at Maleny Community Centre Friday June 17 at 7pm.

Tickets and more information malenartsandmusic.com.au.

AUSTRALIAN Red Cross Lifeblood has unveiled new research, which reveals misconceptions may be hindering blood donation.

The first 'State of Donation' survey, released on World Blood Donor Day, found Australians underestimate how much donated blood is needed by patients each year, while vastly overestimating how many roll up their sleeves.

"Three quarters of respondents don't know

Misconceptions hindering blood donations

that 1 in 3 people will need donated blood in their lifetime," Lifeblood Executive Director, Donor Services, Cath Stone said.

"At the same time, more than 4 out of 5 Australians are unaware only 3% of the population - around half a million people - donates blood.

"More than half of respondents thought

there were at least three times as many blood donors than there are."

It's a misconception that Lifeblood is trying to change, as it calls for 140,000 more donors.

"There are now more than three million extra people living in Australia than there were ten years ago, but the number of people who

donate hasn't changed," she said. "Our existing blood donors can't do it alone. Escalating cold and flu cases, COVID, busy lifestyles and all sorts of other reasons mean cancellations remain high."

7000 donations are needed this National Blood Donor Week. Book a donation at www.lifeblood.com.au, via the free DonateBlood App or by calling 13 14 95.

BUYING NOW

GOLD JEWELRY & GOLD COINS COINS: CROWNS, 1966 ROUNDS, FLORINS, SHILLING, OTHER SILVER COINS

<p>GOLD COINS</p> <ul style="list-style-type: none"> • Australian \$200 Gold Coins • Sovereigns • Half Sovereigns • World proof coins and sets • Commemorative coins • Gold Coins: mounted, holed, or worn • Gold medals and fobs • All other world gold coins 	<p>WATCHES</p> <ul style="list-style-type: none"> • All Rolex watches (including Submariner, Oyster, Daydate, and Datejust) • All Omega (including Seamaster & Constellation) • Tudor & Breitling • Mechanical (automatic & wind up) • Gold & silver pocket watches • Military pocket watches • No quartz / battery watches 	<p>SILVER COINS</p> <ul style="list-style-type: none"> • Australian - Crowns, Florins, Shillings, Six Pences, Three Pences, 1966 50 sent rounds • South Africa, USA & Canada • NZ, Great Britain, Fiji • New Guinea Shillings • Misc Silver Coins • All other World silver coins 	<p>GOLD JEWELLERY</p> <ul style="list-style-type: none"> • Gold chains • Gold bracelets • Gold necklaces • Worn & broken gold jewellery • Gold rings • Bullion bars • Nuggets & alluvial gold • Gold earrings 	<p>WORLD / AUSTRALIAN COINS</p> <ul style="list-style-type: none"> • All world coins • Collection and accumulation • Error and mis-strikes • Proof sets and singles • Trade tokens • Discount and special purpose tokens 	<p>JEWELLERY</p> <ul style="list-style-type: none"> • Rings, brooches, pearls • Pendants and sovereign cases • Watch chains & lockets • Gold cuff links • Bracelets & bangles • Necklaces and all broken jewellery
---	---	---	--	---	---

Broken or unwanted jewellery or coins sitting in a drawer? | Are you no longer collecting? | Are the family not interested? | Would the money be of more use?

CASH PAID. I COME TO YOU.

RING BRIAN ON 0401 379 401

New plans take shape for Nambour CBD

Q&A Interview with Sunshine Coast Division 10 Councillor David Law

SUNSHINE Coast Council last month announced two major initiatives to help shape Nambour's future. *The Gazette* asked Div 10 Cr David Law to expand on the projects and what they will mean for the town.

• What is the Nambour Centre Activation Project (NCAP)?

This is the project for the Council buildings (assets) in Nambour and accommodating the 200-plus staff that will be staying in Nambour. The Eddie de Vere Building; The Fred Murray building; the Library and the forecourt space. Including the parking around this precinct. This project will see the renovation and repurposing of the precinct for the future requirements of council staff and the library including the customer contact centre.

Activation is the driving force of the NCAP and aims to stimulate and attract public and private investment into Nambour, as well as helping to make Nambour a great place to live, work and play.

• What is the Naamba Place Revitalisation Project (NPRP)?

This is the project related to the Nambour CBD area and will focus on walkability throughout Nambour to enable people to get around town on foot which will contribute to the activation. It draws on the many master plans completed over the past 10-15 years or more and the community consultation that contributed to these master plans. There has been an initial "Think Tank" with stakeholders and over the coming 12 months or so there will be a lot more consultation to particularly engage with the recently arrived residents and young families. This will result in placemaking improvements in the CBD area.

Both projects are intended to support the activation of Nambour in collaboration with the community.

With this context in mind I hope that we can provide clarity and purpose for everyone



Cr Law: The NCAP and aims to stimulate and attract public and private investment into Nambour.

who is interested in Nambour and the future prosperity for all elements of the economy and community.

• When do you think the NCAP be completed? When will we see a plan?

A couple of months ago the contract was signed with architects for the feasibility study and concept design. This may take up to 12 months to complete and will include community input. The indicative timeline for the whole project to completion is likely to be up to 4 or 5 years. We would expect to see the concept designs within 10 to 12 months.

• Can you give us an idea of the sorts of

things that might be in the plan?

The core elements of the project are to provide the office accommodation space required for the council staff who will be based in Nambour once the new city hall opens by the end of this year.

There will be approximately 200 staff remaining in Nambour after the move.

The library is likely to be moved into the Eddie de Vere building and become a modern contemporary district level library with space and facilities to suit a library for the 2030s and beyond.

The customer contact centre will remain an important element of council services for residents of Nambour and Hinterland region.

This will also be renewed and made suitable to current and future community service requirements.

Recent surveys have shown a lack of community meeting spaces/venues so this may be one of the additional uses that will be made available in the precinct.

The current feasibility study that is underway will help to understand the needs of the council and the community and provide concept designs.

• You're passionate about Nambour. How important is NCAP for you on a personal level?

I am very passionate about Nambour and one of the main reasons I nominated for election as the Councillor in 2020 for Nambour and Division 10 was to achieve the best possible outcomes for the future of Nambour. Like many people at that time I believed that the Council was leaving Nambour completely when the new council city hall was completed. So the past two years I have been working hard to establish the reality of the situation and to keep the maximum presence of council in Nambour to service the whole Hinterland region. This has included ensuring that at least 50% of staff continue to work in Nambour and that the library and customer contact centre

remains to provide these essential services for our Nambour and Hinterland Community. And of course this means ensuring that the funding for this is in the council budget for the coming year and into the future forecast year budgets.

And right now the NCAP has created the opportunity for the Nambour Forecourt Live Events and there are more planned for this year as well as other activation projects. When there is some certainty about these new projects I will share them with you.

• When will people be able to have input into the Project?

We will be seeking community input for this project and at the moment I am not able to give detail on the timing.

• A common comment on social media was that this type of thing has been announced before. How will NCAP be different from other initiatives that maybe have not lived up to expectations?

In my election campaign I made two promises I knew I could keep; 1 to be honest and 2 to work hard. I have complete control over these promises and throughout my professional career it is the only way I know how to do business. Of course the people will make their own view.

That said I appreciate the doubt people may have following such an announcement and in conjunction with the NPRP. However with all the information I have available today these are the projects that are underway and will be completed. If something should occur to change or impact progress then I will let everyone know the reasons and the what the changes are.

The indicators I have to date show that this project is under way and is funded, key elements of any council project. I know there is funding in this budget 21/22 and the architects are contracted - there is funding in next year's budget to continue the design, planning and activation - the project has funding in the future budget forecasts.



Chamber gets together for drinks at Nambour RSL

Nambour Chamber of Commerce members gathered at the fabulous Nambour RSL last Wednesday to catch up on all the goss!

1. Elissa Bartholomew from Aussie Nambour, Michelle O'Brien from Nambour Chamber of Commerce and Debra Lawson, who recently opened mixed retail business Gatherer in Howard Street.

2. RE/MAX Nambour owner Tristan Brown and Owner/Manager Matt Wall and Mobile Lending Specialist Rowan Clemison both from BOQ Nambour & Hinterland.

3. Yumi Tuckett Aussie Nambour, Nambour COC President Mark Bray and former Nicklin MP Marty Hunt whose new role is Senior Constable, School Based Police Officer at Nambour State College. Sen Const Hunt is holding Coffee with a Cop at Nambour Plaza at 9am next Thursday and every third Thursday of the month following.

4. Tyler Harford Sunshine Coast Council, Katie Wild Savills, Darrin Collins from Sunshine Coast Council and Div 10 Cr David Law.

5. Cam Morden from UBX Boxing + Strength Nambour, left, and Mark Betts from RE/MAX Nambour.



‘What I’ve done, I’ve done for my love of people’: volunteer

NINETY one year old RangeCare client Muriel Peters, has recently been recognised for her tireless contribution as a volunteer with an award in the category, Seniors & Aged Care Services Volunteer at the Volunteering Sunshine Coast 2022 Awards.

Born in Gympie in 1930, Muriel moved to Nambour at age 15 with her widowed father and two siblings.

“I lost my mum when I was four and a half,” Muriel said.

“My youngest sister was three and my brother was eight. It wasn’t until I had grown up that I realised how hard this would have been for my dad.

“In my own life, I feel I have been very blessed,” said Muriel.

“My late husband served in the army in New Guinea during the war and we were married in 1950 on his return, just before my 21st birthday. We have four children, eleven grandchildren and 21 great-grandchildren”.

Muriel’s work as a volunteer started at a very early age, as her Uncle was the first Chairman of Sundale.

“I initially got involved with street stalls and fetes and that kind of thing,” she said. “I’ve volunteered with Sundale in lots of ways more or less since it was established”.

In the years that followed, Muriel volunteered in the Chapel, calling numbers at Bingo and in The Bible study group.

“I just like being there and helping people where I can,” Muriel said. “Recognition isn’t something that I look for, never have done. I do things because I love doing them. I had no idea I had been nominated for the award.



What goes around comes around: RangeCare provides a package of home help and transport services to Muriel who happens to be one of their longest standing volunteers and recently won an award as such.

“As a volunteer, you don’t think of what will be acknowledged or singled out.

“It was a huge surprise because what I’ve done, I’ve done for the love of doing it and my love of people. I love serving people, you know, helping them,” she said.

RangeCare currently provides a package of home help and transport services to Muriel, from gardening and cleaning to transport to health providers.

“The people are just so caring and have offered me a package that suits me perfectly,” Muriel said. “I am always recommending RangeCare to people!”.

And when it comes to advice for others who are considering volunteering?

“Well, I think it’s very important to follow your heart’s desire and help people. The more you give, the more you receive. If you give help and love and it comes from the heart, you receive far more back because people just love being helped”.

► For more information about RangeCare go to www.rangecare.com.au or phone 5445 7044.



Jim Cox’s *The Queen’s Own Quolls*.

Wildlife Exhibition by renowned Montville artist

DESPITE being in his 80s well-known Montville artist Jim Cox continues to make wonderful art.

Jim has two life-long passions – making art is one; the other is discovering Australian wildlife.

This second passion has been a mainstay of his art and underpins so much of who Jim is as a man and as an artist.

Jim’s latest and most ambitious project, *SOS: Save Our Species*, is an exhibition of 24 mixed media illustrations.

His deep yearning is to educate and delight his audience in equal measure and I think there is no doubt that he will achieve this with these wonderful paintings.

The work imagines some of our beautiful animals taking up arms against us in an attempt to fight back for their very survival. The work is humorous, challenging, appealing, and expertly done and limited editions will be avail-



Jim Cox in his studio drawing Quolls.

able to purchase.

An illustrated book is being published to coincide with the exhibition, with words written by the local environmental writer Elaine Green.

The exhibition will be held from July 16 to 31 at Mary Cairncross Gallery, Mountain View Road, Maleny from 10am to 2pm every day.

Jim will be working in the gallery on some days demonstrating his working methods. — **Lou Tasker Montville**



Join the team at RangeCare

RangeCare, your trusted local, not-for-profit community care provider, is seeking dedicated and passionate people to join our team!

Positions available include:

- Care Support Workers
- Domestic Assistants

RangeCare offers various employee benefits including:

- km reimbursements
- salary packaging to increase your tax-free threshold
- ongoing training and development.



For more information about employment positions at RangeCare visit www.rangecare.com.au/job-vacancies or call 07 5445 7044

Positions available across the Sunshine Coast, Sunshine Coast Hinterland and Gympie.

25,000 flock to Nambour Showgrounds

MORE than 25,000 people flocked to the Nambour Showgrounds over the weekend to enjoy the 2022 Sunshine Coast Agricultural Show.

"We had brilliant numbers, not far off last year's, and better than many previous years," said Sunshine Coast Agricultural Show Society Manager Penny Walsh. "We're still waiting on final figures."

In fact she said online demand for tickets was so heavy that the website was overloaded at times.

Organisers were pleased by the response to new attractions.

"The Sunshine & Sons Saloon was an absolute hit," said Penny. "People loved being able to sit on the terraces and watch all the live action on the big screen."

"The weather was superb

and the green was used to maximum capacity again. People were able to sit down as a family and watch the night-time entertainment.

We're known as the friendly Show and it was wonderful to see so many families out enjoying themselves."

And there was no shortage of things to see.

"There were a record number of entries for our competitions with just over 500 entries," Penny said.

"Clive Featherby and KC's Fireworks out did themselves this year.

"A security guard told me he'd been to a lot of shows and this one was the best entertainment he'd seen. It was just a spectacular."

This year's event was well and truly powered by volunteers.

"There were over 1000 volunteers involved in this Show," Penny said. "We called in so many different local groups to

help us out and they answered the call!

"The team from The Shack, for instance, were incredible.

They absolutely loved coming over to help set up and dismantle. It showed great community spirit.

"We're all about community groups and tapping into the spirit that is so strong in Nambour."



Will Habras and Reo Towns spent Saturday morning raising money for the Yandina Scouts.



Great hat! ... Lainey and Felicity Brinkworth.



Jeremy, Audrey and Kerrie Harth.



Jules Spencer, Nick Dolley, Mirandah Boyd, Dan Maloney and baby Iris Boyd-Maloney.



Kauri Palmer, Josh White and Taimana Palmer.



Callum Pettigrew, Abbey Wolski and Susie Robson.



Ninni Phillips and Elizabeth Hunter enjoy their potato slinkys.



Lylah Vines and her Unicorn.



Darcy McCallum with Lilo from Maleny Botanical Gardens and Birdworld.



Shane Christie, Cartia Moore, Tony Moore and Rebecca Moore.



Clockwise from top left:
 • Competitors in the 12 inch standing woodchop competition 1964;
 • Judging Fruit cake entries, 1964.
 • Agricultural students with a rooster in the poultry section at the annual show, Nambour, 1964.

Our first Show was held in 1900

THE Sunshine Coast Show had its beginnings in Woombye when the Maroochy Pastoral Agricultural Horticultural and Industrial Society was established in 1900 at a meeting held in the Woombye School of Arts building.

For the first Show, held on August 2 1900, a small area was levelled and fenced to create a show ring and round timber blocks were used for seating from Thomas Bartholomew Sawing and Planning Mill. About 1,500 people attended the event to enjoy displays of cooking, needlework, floral art and schoolwork. The sideshow alley consisted of three amusements including a merry-go-round.

On August 3 1900 the Brisbane Courier reported "In the history of Woombye, yesterday was a red-letter day and one which will be remembered by the residents who rolled up in goodly numbers to witness the opening."

As time went on, the show continued to be a hit with the community.

The fifth annual exhibition of the Maroochy Pastoral, Agricultural, Horticultural, and Industrial Association was declared a success.

The quality of exhibits had improved on that of previous years. Mr A H Benson, the Government Fruit Expert, commended the fruit display, stating it was the best he had seen in Australia.

About 2,000 people attended the sixth annual show, the first to run over two days.

Exhibitors included Mr Smilenski from Dulong, who exhibited 21 varieties of sugar cane, Mr Charles Rose who displayed a fine conical-shaped trophy of pineapples and Mr J T Lowe, the Nambour and Woombye butcher, who exhibited a display of hams, bacon, lard and other smoked meats.

During the 1920s, many school pig clubs exhibited as pig exhibits were very popular.

In 1926, Mapleton Pig Club received 16 entries from members to exhibit pigs at the Nambour Show. It was reported that it was the best showing of pigs outside Brisbane.

Pigs were judged on their age, size, shape, stance and overall appearance.

The success of school pig clubs was due to the efforts of Mr Shelton from the Department of Agriculture, his sincere efforts, personal tact and courtesy were noted.

The 1930s saw years of financial hardship which impacted on the show. However, there were changing types of exhibits.

Mr H Neville's exhibit of attractive and distinctive Morris cars was very popular.

The Morris Minor series was described as being a wonder car with amazing performance since their introduction into the Australian market.

The Morris Isis Six model was described by one motoring editor as "a car that is far better propaganda for British trade than books of statistics and the massed verbiage of orators."

Entertainment took on an international flavour with the Magnificent Tattooed Venus, who was tattooed from neck to toe in all the colours of the rainbow. The Magnificent Tattooed Venus was also the winner of the World's Championship at the International Beauty competition.

In 1936, the Cossack Skaters performed feats of skill and daring on speed skates upon an elevated platform.

One of the most daring acts was when Demetri whirled his two partners together in mid-air whilst revolving at breakneck speed.

The 1940s saw a name change implemented by the committee as they became the Great

North Coast Pastoral Agricultural, Horticultural and Industrial Society.

Shows were not held during the latter part of World War II (WWII), 1942-1946. During this time, the showground was occupied by the Fourth Field Ambulance of the Australian Army.

The first show after WWII was held in 1947 and was a great success, creating many records.

The financial success of this show allowed the committee to embark on a programme of improvements. They allocated 100 pounds to employ a permanent caretaker for the grounds.

In 1953, the official switching-on ceremony of floodlights at the Nambour show ring took place. Construction work was carried out by the Southern Electrical Authority and Swan's Garage's electrical staff carried out the installation.

In 1951, the show society joined with the community to celebrate the 60th anniversary of the inauguration of local government in Maroochy Shire.

As a tribute to and in recognition of the parts played in developing the district, Mr Matthew Carroll, one of the community's oldest residents, officially opened the show.

Five hundred people attended the Jubilee Show Ball which was a night of great merriment.

In 1955, a search was held throughout Queensland for the 1955 Queen and Miss Golden Pineapple, as part of Golden Pineapple Week initiated by the show society.

In the 1960s, the Chairman of Trustees, J D Grimes agreed to hand over the showgrounds and assets to Maroochy Shire Council under certain conditions.

The society changed its name to the Sunshine Coast Show to reflect the renaming of the region to the Sunshine Coast.

In 1962, the evening entertainment was provided by Canadian Hell Drivers presented as part of a Queensland tour.

The evening show was attended by approximately 2000 people and comprised of action-packed sequences, including crash cars and high speed ramp jumps.

Vehicles featured were the 1962 EK Holden range of sedans and utilities provided by Nambour Holden dealers Williams Motor Company Pty Ltd.

Over the years, there have been many successful competitors - Fred Ivins, in 1918 won first prize for a copybook and later for his champion cattle.

Anne Richardson had a shoebox full of winning certificates for her ferns, cooking and jams and won the Busing Cup, a perpetual trophy for the most prizes won in a show.

Martha Bade, Alma Low, Trixie Duhs and Maureen Doneman over many years have taken numerous first places at the Sunshine Coast Show's cookery, sweets and preserves section.

Alma's tip for making a winning sponge was to use one day old eggs that have never been refrigerated, make sure the flour is fresh and sifted three times, develop a good eye for equal quantities in each cake pan and finally, know your own oven even if it is a wood stove with no thermostat.

Over the long history of the Sunshine Coast Show, many people have worked extremely hard and diligently to make the show what it is today.

- Thanks to the Heritage Library staff for the words and Picture Sunshine Coast for the images.



First pavilion built for the first Nambour Show in 1909.



Annual show of the Maroochy Pastoral, Agricultural, Horticultural and Industrial Association, at Woombye, ca 1905



Miss North Coast Show Girl Quest entrants, Nambour Show grounds, 1958



Side Show Alley and rides at the annual Sunshine Coast Show, Nambour, 1970s.

DID YOU KNOW?

Invasive plants can be spread from your garden by....



in garden waste



Managing invasive plants at **your place** protects our Sunshine Coast.

Gardeners, why not plant some natives?

The diversity you are looking for is at your doorstep – here are just some examples of our beautiful native plants to put in you garden.

Velvet leaf *Callicarpa pedunculata*



Macadamia *Macadamia integrifolia*



Plum pine *Podocarpus elatus*



Hovea *Hovea acutifolia*



Hairy bush pea *Pultenaea villosa*



Richmond birdwing vine



Lomandra *Lomandra hystrix*



Midyim Berry *Austromyrtus dulcis*



Learn more about native plants and **download the GroNATIVE App** here.



Family home in quiet cul-de-sac

AGENT'S CHOICE: 6 Callistemon Court, Maleny

LOCATED in a leafy and quiet cul-de-sac, within walking distance to the vibrant main street of Maleny is this four-bedroom, two-bathroom home.

Offering the growing family or downsizers a low maintenance prop-

erty, this home is perfectly positioned in a long-established area of Maleny.

Close by is every amenity a family could need; public transport connections, primary and high schools, cafes, restaurants, the hospital and medical centres.

Walking paths are also on your

doorstep and offer enviable connection to the town and all its events. A fantastic park is also just a minutes' walk away for the rowdier members of the family.

► To arrange an inspection, contact Maleny & Hinterland Real Estate's Sam Bruderlin on 0497 774 979 or sam@malenyrealestate.com



42 acres, minutes to Mapleton Village

AGENT'S CHOICE: 563 Delicia Road, Obi Obi

OWNED by one family for generations, Braehead is 42 acres of fertile, freehold, rural land situated opposite the Mapleton National Park.

The Braehead Nature Refuge was the first to be listed by the Sunshine Coast Council and provides 100 hectares of remnant rainforest which is

home to a plethora of birdlife and native animals, protected for generations to come.

The family have raised cattle, prize ribbon horses, chooks, ducks and geese all on this productive farmland. The views are incredible and you'll be starstruck by the night sky.

If you're looking to build, a new country home would be a magical

addition to 563 Delicia Road.

It is only six minutes to Mapleton Village, 15 minutes to Nambour, 30 minutes to the best beaches on the Sunshine Coast, and in just over one hour you will be in Brisbane.

► Contact Vanessa Brunton from VB Real Estate on 0467 448 850 to arrange your property tour. 563 Delicia Road, Obi Obi

7 value-add ideas for your home

by **Matt Wall**
BOQ Nambour & Hinterland
Owner-Manager



WHEN it comes to adding value to your home through renovations, it's not always the largest, most time and money intensive changes that make the biggest difference. In fact, often small or even cosmetic changes can have a huge impact.

Prioritise the Home Office

Having a dedicated office space is now a part of our modern lifestyle, and that means it's a huge value-add for buyers. Putting together your home office can be as simple as converting the spare room, as DIY-friendly as adding a modern shed in the back garden (a fantastic option) or as significant as adding a full addition to your home.

Do Up the Kitchen

Renovating your kitchen can be a surprisingly costly endeavour. But it doesn't take much to give it a little lift that can have a lot of impact. Consider replacing the hardware on all the cabinetry, updating the cabinet doors themselves for a modern fresh look, or even installing a new tiled splashback. Cosmetic changes like this can really add a lot of impact, without large investments of money and time.

Splash On the Paint

One of the easiest and most effective ways to add value to your home is through a fresh coat of paint. Updating the look of the exterior of the home or the interior spaces, give it a fresh, modern look that just feels good to be in and can reduce the appearance of general wear and tear that can occur in a household over time.

Freshen Up Your Outdoor Space

Creating a garden oasis (or party spot!) doesn't take much and can really add to the desirability of your home. Consider clearing an area for a fire pit, add some Adirondack chairs and string up some globe lights through the trees. If you have a little bit of cash to spend, consider installing an outdoor kitchen on the

verandah or patio for a more sophisticated, upmarket vibe.

Vege Out

More Australians than ever are getting into the dirt and growing their own veggies. In fact, research shows that Australians are now growing more than 30% of their own food by income. When it comes to adding value to your home, it's not just a quaint, homey ideal anymore - but something that savvy, future looking Aussies are seeing as a non-negotiable. Popping in a raised garden is really cost effective, as well as a lot of fun too.

Focus On Flooring

Flooring can be a huge feature in your home, and if it's looking tired or worn it can really let the entire look of the home down. If you already have timber floors consider updating them with a professional polish. And if you don't have timber floors, you can also consider updating your look with laminate floating floors which both are easy care and budget friendly.

Beautify Your Bathroom

A modern, luxurious bathroom is still a major drawcard for potential buyers and can uplift the value of your home significantly. While a full renovation will certainly give you a good return on your investment, a few small changes can also make a vital difference. You might consider upgrading the vanity, replacing (or even painting) the tiles and even adding in luxury elements like a rain shower or a beautiful, edged mirror.

If you'd like advice on getting started with a new home loan, pop into your local BOQ branch and chat with one of our lending experts today. They're always happy to help!

► To chat about your banking, insurance or property goals and how BOQ Nambour & Hinterland can help, pop in to the branch or give us a call on (07) 5376 9999 today! This article is for general information purposes only and is not intended as professional advice.



BUSINESS FOR SALE - GYMPIE



KINGSTONS OFFICE NATIONAL - OFFICE SUPPLIES DEALERS

ESTABLISHED IN GYMPIE SINCE 1978

Over 44 years, this business has developed a solid reputation for quality and trust. It operates independently under the well known and successful Office National brand. Located at 32 Mary Street Gympie, this business is positioned well out of flood.

Kingstons Office National offers a diversified product range, which allows for effective competition in the market. It stocks high quality, popular business supplies from well-known brands in addition to its own office essentials private label products, which provide excellent value for money.

Kingstons Office National is run by two owner-operators, assisted by five experienced and reliable employees who can operate with minimal input from the owners. The owners each work four days per week.

Located in the city of Gympie, Queensland, this business offers an exciting lifestyle opportunity as it is situated under an hour from the Rainbow Beach/Fraser Island region and the popular Noosa region.

The owners are willing to provide the incoming owner with a training period to ensure the smooth transition and continued success of the business.

Although desirable, no experience is required as ongoing training and support will be provided to the incoming owner.

This business would suit a husband and wife team, or a family. There is the option to enjoy it as a lifestyle business or scale up to take advantage of the enormous opportunities for growth in what is still an affordable, family friendly but rapidly growing region.

**FOR THE FULL
BUSINESS
MEMORANDUM**

Please contact Ross Kingston at
ross@officenationalgympie.com.au

Live Local

Real Estate



This quality home can be updated or modernised to value-add and enhance appeal.

Entry level delight. And solid

AGENT'S CHOICE: 23 Bellevue Street, Bli Bli

THIS low-set brick and tile home, circa 2001, is tucked away in a quiet, family-friendly neighbourhood in Bli Bli and has only ever had one owner.

The meticulously maintained home has three bedrooms, two bathrooms, two living areas, a central kitchen, expansive covered east-facing patio, separate laundry with external access, a double lock up garage and occupies a low-maintenance 700m2 block.

Features include attractive bay windows on north-facing lounge perfectly positioned to maximise the natural light, ceiling fans, easy care tiling in living areas, security screens, separate shower and bath in main bathroom and leafy established gardens.

"It is a solid, quality home that can be updated or modernised to value-add and enhance appeal," said agent Tristan Brown. "But is certainly extremely comfortable, liveable and 'rent-ready' as is."

"The yard is flat and spacious with plenty of room for a pool if desired and heaps of space for the children and pets to play in the fully-fenced backyard."

It is in a sought-after pocket of Bli Bli within walking distance to local parks/playgrounds and Bli Bli State School, and just a few minutes' drive to sporting fields, Good Samaritan Catholic College, local shops and the Maroochy River.

► Contact Remax Nambour's Tristan Brown on 0403 665 643 or Scott Walters on 0447 474 982.



Backyard bliss . . . backing on to park

AGENT'S CHOICE: 8 Murray Crescent, Nambour

THIS highset home on a fully-fenced 785m2 block backs directly onto the fabulous Moss Day Park and Playground.

It offers family-friendly living with a big, north-facing backyard overlooked by upper and lower covered decks, perfect for BBQs and relaxation.

Across two levels the home has four bedrooms, a modern bathroom and kitchen, a formal lounge, an expansive multipurpose area, two timber decks, separate laundry and single carport

There are timber floors on the upper level, three split-system air-conditioners, ceiling fans, floor to ceiling tiles in the bathroom, stainless steel appliances and solar power.

The northerly aspect ensures the home is flooded with natural light.

The backyard is grassy and low maintenance with just a regular mow needed to keep it looking neat and tidy, and there is plenty of room to put in a pool if desired.

Currently tenanted until March 2023 - it could suit an investor seeking to commence or add to their portfolio, or an owner-occupier looking for a move early next year - giving you plenty of time to pack and prepare and build equity through rental income in the meantime.

It is located in an established pocket of Nambour, a 15-minute walk to town, with quick easy access to the Nambour Connection Road, and in close proximity to Nambour Christian College, Burnside State High and St Joseph's.

This is a home with great warmth and potential - on a superb block of north facing land providing a big backyard.

► Contact Remax Nambour's Richard Krausz on 0422 997 810 or Megan Manly on 0421 040 807.

DO YOU HAVE A WASHED OUT DRIVEWAY?



Are you tired of repairing the same damage, year after year?

Here are three easy steps to repair a washed out road or driveway:

1. Install a 10cm layer of road base over the damaged area
2. Smooth the surface and apply fresh gravel
3. Call Coastal Landscape Supplies on 5453 7100 or go to www.CoastalLandscape.com.au to arrange delivery of your product

Not sure how much product you need to get the job done right? Our friendly staff can help!

COASTAL LANDSCAPE SUPPLIES

GET YOUR ROCKS OFF... US



07 5453 7100 18 Kerryl St, Kunda Park
www.coastallandscape.com.au | kylie@coastallandscape.com.au

BARK & MULCH | SOILS | GRAVEL | PEBBLES | SAND | SANDSTONE | ROCKS | ROADBASE | TURF | TIMBER | PAVERS | PLUS MORE!

Your friendly professional agents with heart

TEAM Krausz

Nambour

Coes Creek

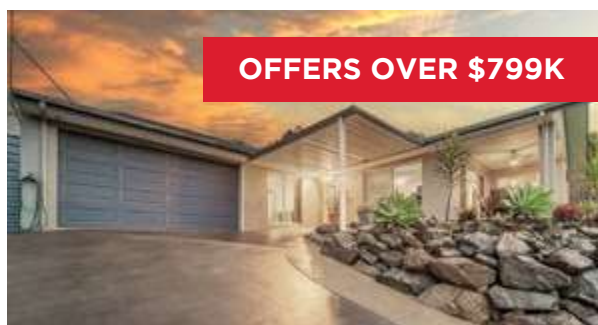
Richard Krausz 0422 997 810 [@richardkrauszremax](https://www.instagram.com/richardkrauszremax)
Megan Manly 0421 040 807 [@meganmanly_remaxnambour](https://www.instagram.com/meganmanly_remaxnambour)
Alex Ollier 0499 770 505 [@alexollier_remax](https://www.instagram.com/alexollier_remax)

RE/MAX Property Sales

50 Lowe Street, Nambour | www.remaxpropertysales.com.au

RE/MAX lists and sells more properties than any other agency in Nambour and surrounds!

Each office independently owned and operated.



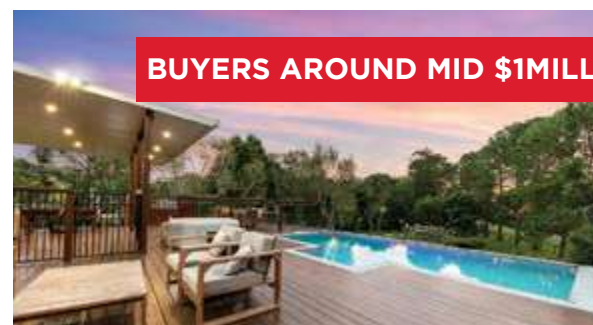
OFFERS OVER \$799K

53 Lachlan Avenue, NAMBOUR
4 Bed 3 Bath 2 Car 787m2
Richard Krausz 0422 997 810
Alex Ollier 0499 770 505



OFFERS OVER \$679K

49 Spring Myrtle Avenue, NAMBOUR
3 Bed 2 Bath 1 Car 700m2
John Tobin 0478 664 546



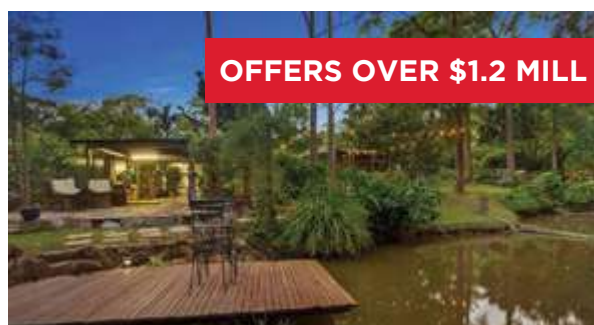
BUYERS AROUND MID \$1MILL

10 Angus Crescent, KUREELPA
3 Bed 1 Bath 2 Car 4,451m2
Tristan Brown 0403 665 643
John Tobin 0478 664 546



OFFERS OVER \$749K

23 Bellevue Street, BLI BLI
3 Bed 2 Bath 2 Car 700m2
Tristan Brown 0403 665 643
Scott Walters 0447 474 982



OFFERS OVER \$1.2 MILL

9 Glenrowan Close, YANDINA
3 Bed 1 Bath 5 Car 5599m2
John Tobin 0478 664 546
Tristan Brown 0403 665 643



OFFERS OVER \$849,000

44 Paynter Park Drive, WOOMBYE
4 Bed 2 Bath 2 Car 791m2
Tristan Brown 0403 665 643
John Tobin 0478 664 546



AUCTION SUN 10TH JULY, 11AM

16 Gallaghers Road, TANAWHA
8 Bed 4 Bath 10 Car
Nathan Beasley 0427 612 550
Jack Payton 0428 748 510



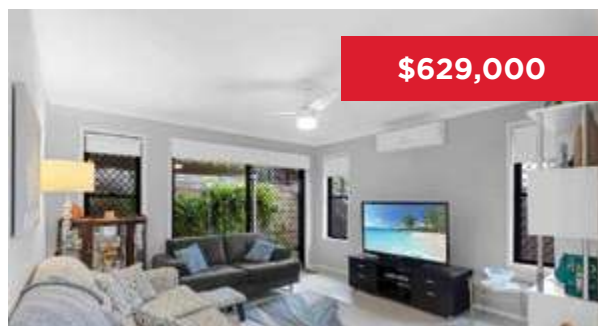
\$689,000

8 Murray Crescent, NAMBOUR
4 Bed 1 Bath 2 Car 785m2
Richard Krausz 0422 997 810
Megan Manly 0421 040 807



OFFERS OVER \$719,000

10 Kentia Street, HIGHWORTH
3 Beds 2 Bath 2 Car 709m2
Richard Krausz 0422 997 810
Megan Manly 0421 040 807



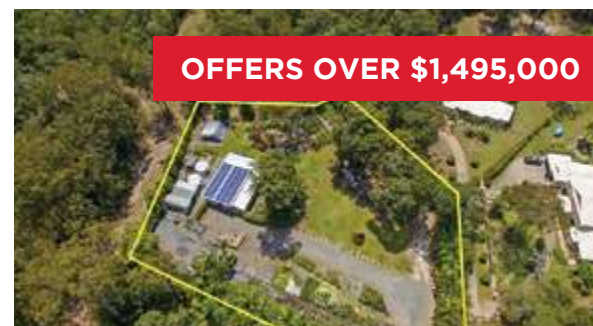
\$629,000

2/6 Betsy Way, NAMBOUR
3 Bed 2 Bath 1 Car
Richard Krausz 0422 997 810
Megan Manly 0421 040 807



OFFERS FROM \$985K CONSIDERED

58 Akala Street, FLAXTON
3 Bed 2 Bath 2 Car 1.09 Ha
Steve G Pery 0448 884 093
Jai Barber 0492 855 196



OFFERS OVER \$1,495,000

83 Edington Drive, COOROIBAH
6 Bed 3 Bath 2 Car 5076m2
Nathan Beasley 0427 612 550
Jack Payton 0428 748 510

RE/MAX Property Sales & Rentals

Scan the QR code to view all of our properties for sale.





VB Real Estate

FREE Marketing, nothing to pay until the property is SOLD.

Call us today, we have several qualified buyers, waiting to purchase a home on the Sunshine Coast & Hinterland.

Visit www.vbrealstate.com.au to view further details of the property and video walkthrough.

Vanessa Et Cheyne Brunton



FOR SALE

NEW LISTING

YANDINA

1.5 Acres, Shed,
5 Bed, 2 Bath, 4 Car



FOR SALE

6 MINS **MAPLETON**

42 ACRES, ORIGINAL 3BDRM FARMHOUSE



SATURDAY 30TH JULY, 2022 @11AM

AUCTION

NOOSAVILLE

5 Bed, 2.5 Bath, 2 Car, Pool, 612m²



FOR SALE

\$355,000

NAMBOUR

UNIT
2 Bed, 1 Bath, 1 Car



FOR SALE

\$350,000

NAMBOUR

UNIT
2 Bed, 1 Bath, 1 Car



BUSINESS FOR SALE

FOR SALE

\$250,000

IMBIL

'Seeds to Serendipity'



FOR SALE

HIGH \$800,000

BLI BLI

3 Bed, 2 Bath, 2 Car



FORSALE

\$1,195,000

MONTVILLE

3 Bed, 2 Bath, 2 Car



NEW LISTING

\$395,000

NAMBOUR

UNIT
2 Bed, 1 Bath, 1 Car



UNDER CONTRACT

O/O \$320,000

TEWANTIN

UNIT
1 Bed, 1 Bath, 1 Car



FREEHOLD LAND & BUSINESS / WORKSHOP

FOR SALE

\$850,000 wiwo

IMBIL

1175 SQM



FOR SALE

\$550,000

NAMBOUR

LAND 1535m²



Vanessa & Cheyne Brunton

0467 448 850



vanessa@vbrealstate.com.au • www.vbrealstate.com.au



MALENY & HINTERLAND REAL ESTATE

SALES | PROPERTY MANAGEMENT | COMMERCIAL



WELCOME TO THE MARKET

6 Callistemon Court, **Maleny**

4 2 2

Located in a leafy and quiet cul-de-sac, within walking distance to the vibrant main street of Maleny is this four-bedroom, two-bathroom home. Offering the growing family or downsizers a low maintenance property, this home is perfectly positioned in a long-established area of Maleny. Close by is every amenity a family could need; public transport connections, primary and high schools, cafes, restaurants, the hospital and medical centres. Walking paths are also on your doorstep and offer enviable connection to the town and all its events. A fantastic park is also just a minutes' walk away for the rowdier members of the family.

For Sale Contact Agent
Inspect By Appointment Only
Welcome to the Team
Sam Bruderlin
0497 774 979
sam@malenyrealestate.com



WELCOME TO THE MARKET

980 Kidaman Creek Road, **Curramore**

4 2 5

Designed for family living at its best, this forever home offers privacy, peace and loads of space for all the family. Beautifully landscaped, the grounds on this 7170m² block boasts an inground pool, firepit, landscaped gardens and a generous outdoor entertaining area overlooking the property. Inside, the master bedroom provides an enviable parent's retreat and is separated from the remaining 3 bedrooms. Perfectly positioned on its generously sized block, there is immense privacy, serenity and multiple entertaining spaces for a family and their guests. Just 12 minutes from the township of Maleny.

For Sale Expressions of Interest
Inspect By Appointment Only
Rodney Millett
0477 702 073
rodney@malenyrealestate.com



51 Engle Road, **Reesville**

3 1 1

Offering 13 acres of usable land, this Reesville property offers a rare opportunity to secure your weekend or forever home. With views over the property and pretty valley views, now is the time to create your new lifestyle on the Hinterland. Reesville is just a short drive from the main street of Maleny and its cafes, restaurants and shopping. The three-bedroom home on the property is packed with classic features but is just waiting for its new owners and their renovation or new build dream. Hardwood timber attributes are bursting in the home; from the flooring to the beams in the vaulted ceilings.

For Sale Contact Agent
Inspect By Appointment Only
Rodney Millett
0477 702 073
rodney@malenyrealestate.com



Balmoral Ridge

5 4 7

Offering complete privacy, with incredible views to the Sunshine Coast and Baroon Pocket Dam, this stylish home delivers the ultimate in lifestyle and entertaining. Boasting an 18m inground pool and generous entertaining areas; there is stunning views in every direction. With attention to detail in every element throughout the home; Italian tapware, imported English light fittings, Turkish travertine tiles, recycled hardwood timber from Western Queensland and Glasshouse Mountain rock forming the facade of the home, there is so much to fall in love with at this very special property.

For Sale Expressions of Interest
Inspect By Appointment Only
Rodney Millett
0477 702 073
rodney@malenyrealestate.com



WELCOME YOUR NEW NEIGHBOURS

Unit 7/ 12 Fig Street, **Maleny**

3 1 1

Located in a highly sought-after, leafy area of Maleny, just minutes to the Hinterland township of Maleny and all its amenities, cafes and shopping is this well maintained and private unit. Boasting three bedrooms, a large family bathroom and open kitchen and dining, this light-filled unit offers low maintenance living just a short walk to the bustling town of Maleny. An enviable outdoor space is also a fantastic feature for the entertainer and gardener. With so much on offer for entry level buyers or investors alike; this property will not last long and an inspection is a must.

SOLD
By Principal
Rodney Millett
0477 702 073
rodney@malenyrealestate.com



WELCOME YOUR NEW NEIGHBOURS

2/17 Glens Road, **Balmoral Ridge**

3 3 2

Bergman House is the quintessential Sunshine Coast Hinterland home; panoramic views, architecturally designed, very private, and unique in every way. From every room there are views of mature plantings and an attractive green vista. However, it's the view from the master bedroom and living areas of very pretty valleys, and beyond to Buderim and Mount Cooloom that are stunning. From the minute you arrive at this property you will feel how special this property is. Sliding timber doors with stained glass accents have been used throughout the home to offer light and breeze and connection to the outdoors.

SOLD
By Principal
Rodney Millett
0477 702 073
rodney@malenyrealestate.com

5494 3022

malenyrealestate.com

Maleny & Hinterland Real Estate

malenyandhinterlandrealestate

PROUDLY A FAMILY OWNED AND OPERATED AGENCY IN THE HEART OF MALENY

Look Local Trades & Professional Services

Professional Services



Supporting local business with
Accounting and Tax
BAS and GST
Financial Statements
SMSF and Superannuation
Planning and Business Structuring
Business Purchase and Sale

1/13 Turner St, Beerwah
5439 0188 | admin@hintertax.com.au



Accounting
Business Advisory
Services
Tax Return Preparation
Company, Trust,
Partnership, Individual
Self-managed
Super Funds



5442 1234

info@innovate8.com.au

www.innovate8.com.au

Cleaning/Pest Control



- SEPTIC SYSTEM *Locally Owned*
- TREATMENT PLANTS *& Operated Since 1980*
- GREASE TRAPS
- HYDRO EXCAVATION
- LIQUID WASTE
- COMMERCIAL & DOMESTIC

Ph 5447 6477
www.suttonscleaning.com.au

Electrician



Small Job Specialist

Quality Workmanship on Domestic
Installations & Repairs

40 Years Experience

M: 04 27 170235

Water Services



SEPTIC PUMP OUTS

Hinterland Waste
Water Services

Peter
0428 723 082

hw@bigpond.com

Gas Services



NEED A NEW GAS CONNECTION

- Domestic • Commercial • Rural • Industrial
- Repair Work • Gas Emergencies
- Gas Plumbing • Cooktops • Hot Water
- Heating • Commercial Cooking Appliances
- Residential & Commercial • Gas Certificates

CALL DREW 0404 657 047
info@gasservicesqld.com.au

QBCC: 15247354

www.gasservicesqld.com.au

HPS

Hinterland
Pump Services
Glasshouse to Gympie

Murray

0416 256 536

Auto Services

CARAVANS WE BUY, SELL AND CONSIGN

P: 0408 758 688

Plumber

WOOMBYE PLUMBING
30 Years Experience
RURAL PLUMBING SPECIALIST

- RAINWATER TANKS & INSTALLATION
- DRAINAGE
- MAINTENANCE
- EXCAVATOR HIRE

ADAM KITHER
0418 712 268
adam@kitherplumbing.com

24 Menary Rd, Woombye QLD 4559

Landscaping Services

WOODCHIP / FOREST MULCH
\$22 per cubic metre + GST
(8 cubic metres minimum delivery)
54 459921 or 0412 586 131

We also provide complete tree services including pruning, removals & consultancy



OBLIGATION FREE SITE INSPECTIONS FOR ALL SUNSHINE COAST RESIDENTS

Call 1300 0 DRILL

E water@geodrillaustralia.com.au
www.gdwaterbores.com.au

Roofing

RE-GUTTER?
DOES YOUR HOUSE NEED GUTTERS REPLACED?
LOW SET AND HIGH SET
FREE QUOTES
PHONE 0417 721 630
JOBS UNDER \$3300

WE ARE BACK! Noosa Eumundi Auto Wreckers
17 Whalley Creek Close, Burnside
Call Ivan 5442 8866
STILL WANTED:
F Trucks and other cars
Ring for parts requirements
Open Mon to Fri 9am-1pm

Home

Servicing The Sunshine Coast For Over 30 Years

0411 872 060

Ziptrak & Zipscreen • Blinds & Awnings
Clear PVC Blinds • Plantation Shutters
Security Doors & Screens

Call us today for a free measure and quote!

www.independentblindsandawnings.com.au
QBCC No. 1096933

LOCALLY GROWN TURF
FAMILY OWNED AND OPERATED

- Low Maintenance
- Hard Wearing
- Shade Hardy
- Wintergreen Couch
- Native Zoysia Nara
- Drought & Salt Resistant
- Suits all Budgets
- Soft Leaf
- Buffalo Sapphire

• Pickup or Delivered • Preparation & Installation

P 07 5445 9251 M 0488 409 502
447 Chevallum Rd, Chevallum | twistbrothersturf.com.au |

Auto Services

AUTOELECTRICS QLD
& Mechanical

- Air Conditioning
- Mechanical Repairs
- Auto Electrics
- Log Book Servicing

227 Nambour Connection Rd, Woombye
autoelectricqld.com.au
5442 2278

CONCRETING & LANDSCAPING
ALL AREAS

- Footpaths • Driveways • Slabs
- Stencil • Stamped
- Exposed Aggregate • Plain • Bobcat
- Excavator & Truck
- Quality work at affordable rates
- Free Quotes & Free Advice Anytime
- Credit Cards

Ph Guy 0416 202 044
www.concretecontrol.com.au
QBCC Lic no. 1129605

- TREES & STUMPS REMOVED
- HOUSE & SHED SITES
- UNDERGROWTH & LANTANA CLEARED
- FARM ROADS
- HORSE ARENAS
- AND MUCH MORE!
- STEEP SLOPES OK

JOHN : 0455 916 231

Painter

ProDec
Painting and
Wallpapering Specialist
Baz Sowerby

Over 25 years in the painting and decorating trade
Covering all aspects of interior and exterior decorating

For a free estimate call Baz
0432 332 162
Email: baz-22@live.co.uk

Letters to the Editor

Do you have an opinion to share? A range of viewpoints leads to better debate and better outcomes. **Submit your Letter to the Editor** with your name and suburb to: editor@sunshinevalleygazette.com.au. Please understand there is a strict 300-words limit.

Men's Rescue Centres would get to the root of DV

"What is your problem?" asked in a confident, supportive, calm and caring manner, is a truly powerful question begging for an answer that can resolve any misunderstanding and avoid escalation into violence.

When bullying occurs, the perpetrator has a problem. That feeling of hurt or discontent of any kind could be coming from current issues or from their deep past experiences.

I was a victim of psychological abuse as a child and came to realise my dad was suffering from PTSD and other problems. I am offering to governments and support agencies a possible way to reduce domestic and family violence. Because current methods are not working very well.

For the sake of vulnerable children who go on to suffer, and make their loved-ones suffer due to their childhood experiences, I believe my initiative would get to the real root of the problem and greatly reduce it.

I suggest the establishment of "Men's Rescue Centres" where, at the first signs of this family dysfunction crime, the woman can confidently

report the treatment that she knows she does not deserve and the perpetrator can get help.

He would be calmed down and asked questions in a safe, supportive environment, in a caring, non-judgemental manner.

He will get to the real root of the matter and be guided to become reunited with his family.

Additionally, this could save the taxpayer many millions of dollars.

For anyone to read, details of this policy are explained in a blog on my website: www.balancewithcolour.com

I urge at this special time of new policy generation, that the Sunshine Coast Council and others establish a trial, a "lighthouse project", along these lines. If a "Men's Rescue Centre" can be shown to greatly reduce family and domestic violence (and bullying generally) Nambour could be celebrated worldwide.

Please consider this policy and take what action you can. It is "prevention" rather than an attempt to "cure"

— **Lorraine Roberts, Nambour**

What's the rush?

Thank you for your article about the land swap in Maleny. Perhaps readers outside Maleny thought that this land was "on the outskirts" of the town or even "remote".

It's actually only a couple of hundred metres from the Main Street — in the precious community-owned "precinct" behind the Obi Obi Creek.

This decision was sprung on us, so many Maleny residents rushed to ring and email Councillors asking to delay the decision to allow for community consultation.

Only Cr Law and Natoli heeded our call. Why not other Councillors?

Why not delay the decision? Why not consult community? People are demanding more transparency and genuine community consultation from government.

— **Andrew McLean, Maleny Greens**



Nature Watch

The White Crab Spider

The Thomisus Spectabilis is often referred to as the White Crab Spider, or Flower Spider. There are about 2000 examples of this species. They are quite small with a female about 10mm in length and the male about 6mm in length. They are ambush predators so do not spin a web. They are venomous and quite aggressive. Their bite can cause localised pain but is not lethal. Generally speaking their biting apparatus cannot puncture your skin but wearing gloves while gardening is prudent. These spiders are often found on white and yellow flowers so this one is unusual having been caught on a red flower which would make it vulnerable to a foraging bird. I have photographed many examples of the Crab spider species over the years. — Don McGluskly, Diddillibah



< Maleny Parakeet

This Indian Ringneck Parakeet was taken at Bird World in Maleny. He was very happy to sit and have his image taken. Pic: Sam Cook, Sam's Eye Photography.

Moments in Time:



In 1962 District Commissioner Kirkpatrick presented Queen's Scout Badges to Scouts from the 1st and 2nd Nambour Scout Troops.

Nambour boasts proud scouting tradition

ONLY one year after Lieutenant General Baden Powell began the Scouting Movement in England in 1908, the small town of Nambour had its own first Nambour Scout Troop headed by ex-Melbourne dentist Mr E. Wainwright. Since that time, thousands of boys have been enriched by the Scouting traditions passed on by committed leaders. A scouting highlight is the awarding of the Queen's Scout Badge.

On 27 April 1962, John Young, Garnet Swallow, Robert Young, Richard Groves, and Gordon Rick were presented with their Queen's

Scout badges by District Commissioner Kirkpatrick watched by Senior Scout Leader, Roger Fewster.

The boys were later presented with their Queen's Scout Certificates by Chief Scout of Queensland, Sir Henry Abel Smith at a ceremony at Government House, Brisbane.

Richard Groves has presented a folder containing Scouting photos, memories etc of the 1960s to the Nambour Museum. It can be viewed in the Museum's Scout room together with other Scouting memorabilia on Wednesdays, Thursdays and Fridays from 1-4pm, Saturdays 10am-3pm and groups at other times by arrangement.

Roll up your sleeves

With most Australians still unaware blood donations are largely used to support cancer patients, the Leukaemia Foundation is marking this National Blood Donor Week (13-19 June) and today's World Blood Donor Day (14 June) by calling on the national community to roll up their sleeves and donate.

New research from LifeBlood has revealed that despite three quarters (76 per cent) of Australians knowing someone with cancer, close to the same number of people (77 per cent) are also unaware that cancer treatment uses a third of all donated blood products.



Bearded Dragon

Bearded Dragon, this was shot Gardener's Falls. The little guy was basking in the afternoon sun. Pic: Sam Cook, Sam's Eye Photography.

Crossword

See solution next page

<p>ACROSS</p> <p>3 Large placard</p> <p>8 Plan with ingenuity</p> <p>10 Tree</p> <p>11 Made into a statute</p> <p>14 Bring into line</p> <p>17 Leaves out</p> <p>18 Fertilising powder</p> <p>20 Of the ear</p> <p>21 Absent</p> <p>23 Trap</p> <p>25 Deserve</p> <p>27 Favourite</p> <p>29 Dash</p> <p>30 Iced, as cake</p> <p>32 Had on</p> <p>34 Highland dagger</p> <p>35 Wealth</p> <p>38 Article</p> <p>40 Smallest amount</p> <p>41 Worry to excess</p> <p>44 Transgression</p> <p>45 Gathering for oneself</p> <p>46 Pulled forcibly</p>	<p>DOWN</p> <p>1 Fragment</p> <p>2 Slow mover</p> <p>3 Fastener</p> <p>4 Egg-shaped</p> <p>5 Dry, of champagne</p> <p>6 Fundamental</p> <p>7 Chastise</p> <p>9 Replenish</p> <p>12 Toddlers</p> <p>13 Cardinal's title</p> <p>15 Faithful</p> <p>16 Looking briefly</p> <p>19 40 winks</p> <p>22 Coniferous tree</p> <p>24 Utters wildly</p> <p>25 Conceited, boastful person</p> <p>26 Shining</p> <p>28 Hill</p> <p>31 Therefore</p> <p>33 Annoys</p> <p>36 Custom</p> <p>37 Raised platform</p> <p>39 Citrus fruit</p> <p>42 Find fault constantly</p> <p>43 Sorrowful</p>
---	--

1	2	3	4	5	6	7
8		9			10	
		11		12	13	
14	15	16			17	
18			19	20		
		21		22	23	24
25	26		27	28	29	
30		31	32	33		
	34			35	36	37
38			39	40		
	41		42	43		
44			45			
	46					

Health & Wellbeing

HATHA YOGA/PILATES RELAXATION

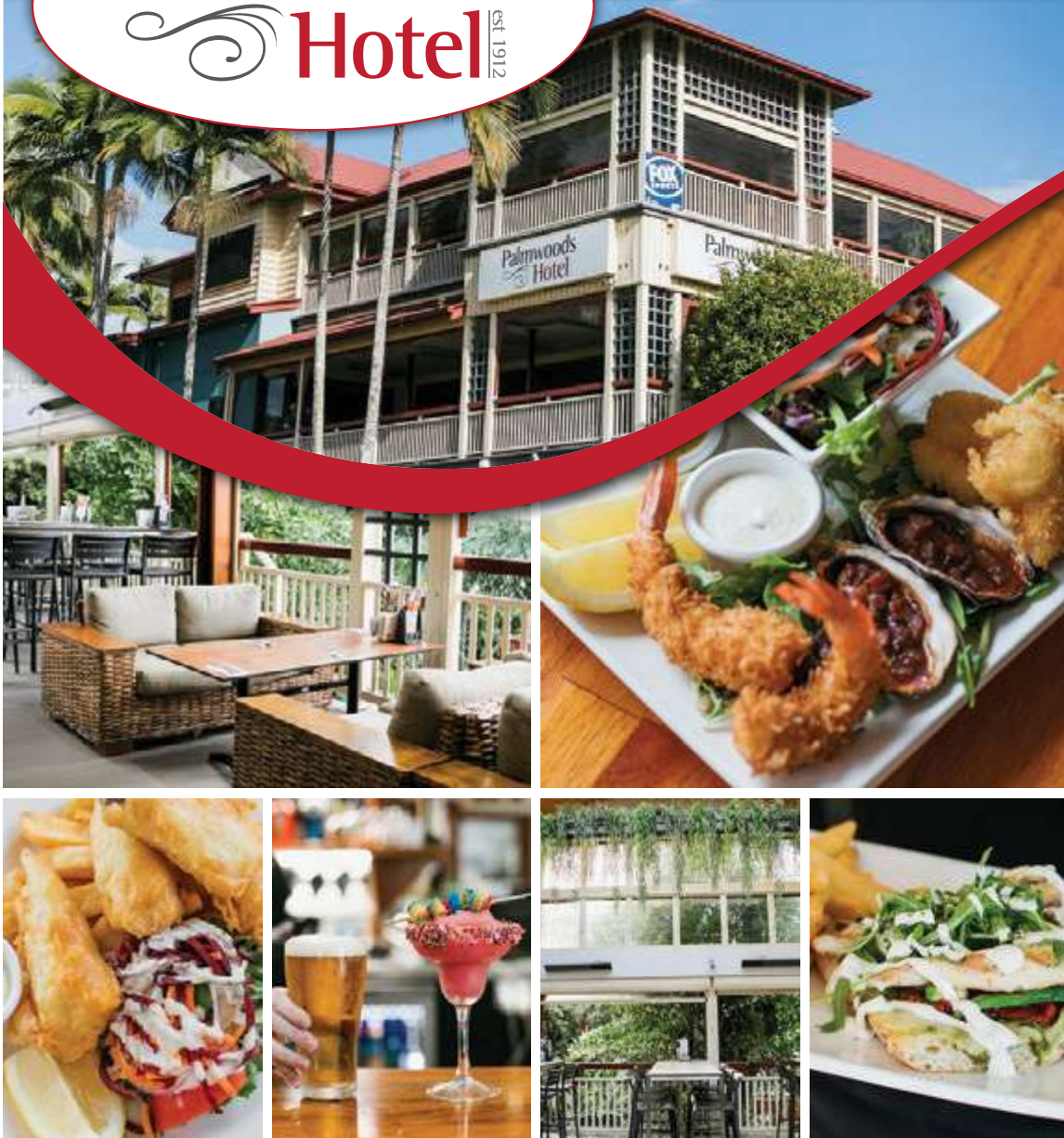
Woombye Hall: Sat 9am & Wed 9.30am. Beginners & Seniors welcome. Cost \$10. Christine: 5441 6285 (Cert. in Pilates matwork; Dip. IYTA: Yoga Instructor; USC Sport & Exercise minor: Ex. Prescrip. for Health & Rehab.)

Wanted to Buy

Wanted to Buy: Tractor in any condition. Also Farm and Earthmoving Equipment. Phone 0407 712 302.

Palmwoods Hotel est. 1912

EXPERIENCE THE LEGEND



CART of CASH



ENTRY TICKETS AVAILABLE WITH ANY MAIN MEAL PURCHASED WED-SUN DURING DINNER

WIN A SHARE OF **\$20,000**

Receive Your Entry with a \$50 drop
Drawn Sunday June 26, 2pm

WWW.PALMWOODSHOTEL.COM.AU

TERMS AND CONDITIONS APPLY

28-34 MAIN STREET PALMWOODS | BOOKINGS ESSENTIAL | 1300 PALMWOODS | WWW.PALMWOODSHOTEL.COM.AU |

BACK FOR A LIMITED TIME ONLY!

EXCLUSIVE TO **Bottlemart**



4 PACK

\$16.99 EACH

24 PACK

\$78.99

VODKA CRUISER
BLUEBERRY OR POM POM 4.6%
4 X 275ML BOTTLES

START AT

Bottlemart

BOTTLEMART.COM.AU



30 PACK
XXXXX GOLD
30 X 375ML CANS

\$48.99 EACH



STONE & WOOD GREEN COAST LAGER 3.5%
24 X 330ML BOTTLES

\$49.99 EACH



GREAT NORTHERN ORIGINAL
24 X 330ML BOTTLES OR 375ML CANS

\$52.99 EACH



30 PACK
HAHN SUPER DRY 3.5%
30 X 375ML CANS

\$52.99 EACH



\$39.99 EACH

SAILOR JERRY SPICED RUM, CANADIAN CLUB WHISKY, JIM BEAM WHITE LABEL BOURBON, BALLANTINE'S SCOTCH OR BACARDI CARTA BLANCA 700ML



CANADIAN CLUB 4.8% VARIETIES
10 X 375ML CANS

10 PACK

\$39.99 EACH



JACK DANIEL'S & COLA 4.8% VARIETIES
10 X 375ML CANS

10 PACK

\$46.99 EACH



SAVE \$6

ANY 2 FOR **\$12**

LINDEMAN'S BIN WINES
750ML



SAVE \$15

ANY 2 FOR **\$25**

WYNNS COONAWARRA WINES (EXCL. BLACK LABEL)
750ML



SAVE \$6

HOT PRICE

\$11.99 EACH

PENFOLDS KOONUNGA HILL WINES
750ML



\$7.99 EACH

JACOB'S CREEK CLASSIC WINES
750ML



\$8.99 EACH

JACOB'S CREEK SPARKLING NV WINES
750ML

WIN A YEAR'S WORTH OF GROCERIES

PURCHASE ANY 750ML JACOB'S CREEK VISIT BOTTLEMART.COM.AU

TERMS AND CONDITIONS APPLY. SEE WEBSITE FOR DETAILS.

BEERWAH CELLARS - BEERWAH
SHOP 11, BEERWAH MARKETPLACE PEACHESTER RD TEL 5494 0477
BEERWAH DRIVE THRU - BEERWAH
MAWHINNEY STREET TEL 5494 0555

GLASS HOUSE CELLARS - GLASS HOUSE MOUNTAIN
SHOP 5, 9 BRUCE PARADE TEL 5493 0188
MOOLOOLAH CELLARS - MOOLOOLAH
SHOP 3, 2 JONES STREET TEL 5494 7320

PALMWOODS CELLARS - PALMWOODS
SHOP 5, 18-20 MARGARET STREET TEL 5445 9266
PALMWOODS DRIVE THRU - PALMWOODS
28 MAIN STREET TEL 5445 9003



CATALOGUE OUT NOW



All specials available from Wednesday 8th June until Tuesday 21st June 2022. Images are for illustrative purposes only. Specials available only in the state of Queensland. Prices may vary in country and far North Queensland. Different pack sizes and variants may not be available in all stores. Bottlemart supports the responsible service of alcohol.

QLD_P12_HP_SVG

FOR SALE	NAMBOUR	FOR SALE	NINDERRY	FOR SALE	NAMBOUR	FOR SALE	SOUTHSIDE	FOR SALE	NAMBOUR
					UNDER CONTRACT				
4 MARTHA PLACE	201 FAIRHILL ROAD	16 HILL STREET	50 FURNESS ROAD	23 PETRIE CREEK					
6 3 2 600m ²	3 2 4 2303m ²	2 1 1 610m ²	3 1 1 1099m ²	3 1 1 1592m ²					
Peter Wrigley: 0407 374 349	Andy Sharma: 0410 989 177	Andy Sharma: 0410 989 177	Warren Nonmus: 0431 210 348	Andy Sharma: 0410 989 177					

Good things come in threes!

JULIA • JODY • JACQUI

Property Management Superstars



Phone us on

5470 7000

or pop into our office at

**50 Lowe St,
Nambour**

RE/MAX Property Sales



remaxpropertysalesandrentals | 5470 7000 | www.remaxpropertysales.com.au

Cub Cadet

BEAT THE PRICE INCREASES

36 MONTHS INTEREST FREE - NO DEPOSIT - AVAILABLE JUNE* CONDITIONS APPLY

**4 WHEEL
STEER
ZERO
TURN**

**FREE
Local
Delivery**



CUB CADET ULTIMA ZT1 42

- 42" Cutting Deck
- Zero Turn Steering Radius
- 21.5HP Kawasaki V-Twin Engine
- 3 Year Warranty
- Free Local Delivery
- Complementary 4 litres Cub Cadet Oil from North Coast Mower Centre



ZT1 42
\$6,999
RRP \$7,399

CUB CADET ULTIMA ZT1 46

- 46" Fabricated Cutting Deck
- Zero Turn Steering Radius
- 23HP Kawasaki V-Twin Engine
- 3 Year Warranty
- Free Local Delivery
- Complementary 4 litres Cub Cadet Oil from North Coast Mower Centre



ZT1 46
\$7,999
RRP \$8,499

**CUB CADET STEERING WHEEL
ZERO TURN ZT1 S 42**

- 42" Fabricated Cutting Deck
- 679cc Cub Cadet Engine
- Synchro Steer technology
- Fully Adjustable Steering Column and Adjustable High Back Seat
- Dual LED Headlights
- 3 Year Warranty
- Free Local Delivery
- Complementary 4 litres Cub Cadet Oil from North Coast Mower Centre



ZT1 S 42
\$8,199
RRP \$8,799

**NEW
MODEL**

**CUB CADET STEERING WHEEL
ZERO TURN ZT1 S 46**

- 46" Fabricated Cutting Deck
- 679cc Cub Cadet Engine
- 4 Wheel Steer Zero Turn
- New Design Adjustable Steering Column with LED Light
- 3 Year Warranty
- Free local Delivery
- Complementary 4 litres Cub Cadet Oil from North Coast Mower Centre



ZT1 S 46
\$8,999
RRP \$9,499

**NEW
MODEL**



**North Coast
MOWER CENTRE**

Ph: 07 5441 5455 | 36 Coronation Ave, Nambour
www.northcoastmowercentre.com

Mon - Fri: 8am - 5pm
Sat: 8am - 12pm