



NEV KANE
Real Estate since 1953

PROPERTIES SELLING FAST!
Call us today for a Free Appraisal
07 5446 7333 nevkane.com.au

Business from the heart

A social and youth worker has put his money where his heart is and invested in a Nambour business with big plans to give back to the community.

The Crafters Heart in Price Street, the brainchild of Jamie Brady, opened February 28. Together with his girlfriend, Josie Heslop, Jamie has renovated and created a warm and welcoming space that houses a not-for-profit coffee house and op-shop.

"We have already received such a positive response from the Nambour community, it has blown us away," Jamie said.

"Youth work is where my heart lies," said Jamie who has been in social and community work in Nambour for the past three years.

"Because I can personally relate to young people who are vulnerable, at risk and struggling with addiction and social isolation," he said.

"As a teenager, I was out of control and eventually ended up smoking ice, and heading for jail. It wasn't until my early 20s that I started to see my way clear of that situation and I am not really sure how it happened, but I ended up at Uni, studying for a Human Services degree.

"I also found God and that was an absolutely fundamental turning point for me."

Early in his career, Jamie worked with vulnerable youth and took them on camping and surfing trips as a way of connecting with them.

Giving back, connecting community

"I decided to register my own organisation, founded on the idea of giving back, and sowing into and connecting our community," he said.

"I became extremely busy and knew I needed to find a space to operate independently and generate income to go directly to helping locals on the Sunshine Coast.

"This venture is entirely self-funded, because independence is extremely important to me.

"We currently support a full-time youth worker, we are involved with disability support work, NDIS services, Christian outreach, working with youth groups and combining with other youth organisations to help, support and up-skill people."

While *The Crafters Heart* bases its operation on Christian principles, Jamie says it is a space that welcomes everyone.

"My vision was to create a place where people might be drawn, would feel accepted and sup-



Jamie Brady and Josie Heslop, pictured in the Op Shop area, are providing a "space for change" in the lives of people who are looking for it. Right: the Crafters Cafe, fronting Price Street.

ported and may eventually lead them to a better place in their lives," he said.

"We plan to develop the other half of the building to incorporate healing rooms, a sound stage for musicians, and a space for projectors and where we may have guest speakers to run seminars".

The Crafters Heart is happily accepting donations of clothing, furniture and homeware that is clean and in good condition. They can come and pick up donated goods.

"I don't like labels, and personally, I am fully street, fully Christian and fully nothing. I don't have any agenda in particular other than to provide a space for change in the lives of people who are looking for it.

"This place is just the creation of my brain. But I am extremely excited about the possibilities for this space and the community we create".

► *The Crafters Heart* 44 Price Street Nambour. Phone 0421 803 312.



WOOMBYE VETERINARY SURGERY

VET

5442 2000

Dr Charlotte Ashton-Heinius B.V.Sc.

23 Blackall Street Woombye

SUNSHINE STEERING

Straight up front



RTA No. AU49451

David & Tina Ledger

P 5478 8020
F 5478 8850

Power Steering • Suspension • Wheel Alignments
Child Restraints • Roadworthy Inspections
Tyre & Balancing • All Mechanical Service & Repairs
Air Conditioning • All Brake Repairs
We also sell nuts, bolts and tyres.

4/27 Main St, Palmwoods, Qld 4555

Sunstate Gearbox & Diff Service

Specialising in:

- Manuals
- Differentials
- Automatics
- Tailshafts
- Transferscases
- Clutches

OBLIGATION FREE APPRAISAL

5 Charles Court, Kunda Park

Ph: (07) 5476 8911

www.sunstategearbox.com.au

WASHED OUT DRIVEWAY?

Repair your driveway with road base, and prevent serious damage to your vehicle. We can put you in touch with an experienced and trustworthy local contractor to help you get the job done.

Call or shop online.


COASTAL LANDSCAPE SUPPLIES

GET YOUR ROCKS OFF US

18 Kerryll St, Kunda Park

07 5453 7100

www.coastallandscape.com.au



JOIN NOW FOR \$79

AND GET 4 WEEKS FREE NO CONTRACTS. Value Personal Training packages available

5441 6154
Nambour@jetts.com.au
jetts.com.au
Jetts Nambour

jetts

NATURAL GARDEN fertility

Garden the Way Nature does with the BioDynamic Organic Fertilisers Nature has always Made

Locally Produced Composts & Soils Made From Locally Sourced Recycled Green Waste

0407 468 524

- Soils & Composts
- Potting Mix
- Seedling Mix
- BioChar
- Rock Dust
- Worm Castings
- Mushroom Compost
- Worm Juice Fertiliser
- Raised Garden Beds

SUNSHINE VALLEY Gazette

Editorial

If it matters to you, it matters to us. Send your news to Cameron Outridge 0409 424 487 editor@sunshinevalleygazette.com.au

Advertising

To advertise contact Tanya Outridge 0400 069 711 tanya@sunshinevalleygazette.com.au

Designer

Katie Buckley: katiebuckley@live.com

Distribution

10,000 copies are distributed to popular pick-up points throughout the hinterland including at Palmwoods, Woombye, Nambour, Chevallum, Eudlo, Mooloolah, Hunchy, Yandina, Maleny, Montville, Flaxton, Mapleton and Forest Glen.

Gazette in Print, Email, Online & Facebook

The Gazette is Printed Fortnightly & Online Always. A pdf form of the printed paper can be found on our website. Stories are also posted on Facebook, on our blog and via email to our subscribers.

Editorial Policy

Every endeavour is made to publish submissions but we can never guarantee that any article will definitely appear. We prioritise constructive news which strengthens the community fabric. Our broad aims are to:

- Connect the Community.
- Acknowledge Achievement.
- Back Business.

We encourage respectful & constructive debate on local issues in our letters section.

Thanks to our Advertisers

The Gazette is completely funded by our advertisers who make community journalism possible. Without them, there would be no Gazette. Please support them and let them know you found them in the local paper.



Muriel, 100, picked beans around Nambour for 15 years as a young mother.

Muriel Smith, 100, celebrates a local life well lived

MURIEL Smith received letters from the Queen, the Governor General and local member of parliament on the occasion of her 100th birthday on March 3.

Muriel is a local girl, born in Canada, who moved to Australia when she was 3. She is currently a resident at Estia Health Aged Care Home in Nambour.

Muriel used to pick beans around Nambour for 15 years as a young woman with little children.

Some of her family members were on hand to celebrate with her.

But unfortunately, due to covid, numbers had to be restricted. Happy 100th birthday Muriel!



Michael and Kyleigh Simpson in their "garden with thousands of plants in hundreds of genus from around the world".

Montville garden trio to open in a feast of Easter colour

A Montville couple is inviting the public into their beautiful property this year as part of an Easter Open Garden Festival.

Michael and Kyleigh Simpson will open their property, "The Shambles", featuring a 112 year old farmhouse. This will be the 20th time they have done so, having been regular fundraisers and open gardeners since 2001. In fact their last event in 2019 raised \$10,000 for the Queensland Drought Appeal.

After a couple of years on the sidelines because of Covid, they are back this year raising money for Cittamani Hospice.

The Easter Open Garden Festival will feature three diverse local gardens:

- Kyleigh and Michael Simpson's "The Shambles" at 85 Western Avenue Montville;
- Louise and Jeff Tasker's "Lower Woontooba" at 238 Western Avenue Montville; and
- Rowena Cavanagh's "Wongawilli" at 19 Manley Drive Montville.

Michael said many visitors had trod The Shambles' garden paths over the past two decades. "For 30 years we have built up an extensive plant collection around our century old farmhouse.

"We have a registered collection of 'Heritage Roses' and perennial Salvias in a garden with thousands of plants in hundreds of genus from around the world.

"Many people describe our garden as a 'cottage garden'. But it's not. It's a collector's garden," he said. "It's a Queensland country garden full of rare and unusual plants.

Michael said a lot of gardener visitors will be motivated by the opportunity to obtain rare and unusual plants at The Shambles' plant stall. "Others like to take a peek inside our private



The Shambles is one of three properties that will be open to the public.

properties that are rarely open to the public. Easter will be a good time for our plants, especially for the roses, camellias and Gordonias."

Michael is a practicing doctor in Montville and he and Kyleigh have written several books over the years on gardening. He has had to ease back on work in the garden because of severe rheumatoid arthritis.

"But it's still very much a team effort as Michael does the planning, documenting, writing and promotion and keeps the website updated," said Kyleigh.

"All of the hard physical work and the first-class horticultural care is Kyleigh's doing," said Michael.

Visitors will enjoy three fascinating large country gardens, each with a different character in their beautiful borrowed landscapes. A plant stall and refreshments will be offered at The Shambles; there will also be a plant stall at Lower Woontooba. The gardens are open on Saturday 16 and Sunday 17 April from 9am to 4pm. Entry \$10 to each garden (cash only please) children free. See www.montvillegarden.com www.facebook.com/montvillegarden.

Nambour Forecourt Live is back March 18

NAMBOUR Forecourt Live! is back on March 18, themed around Harmony Week.

Sunshine Coast Council Division 10 Councillor David Law said inclusiveness, respect, and a sense of belonging for everyone was the feeling every Nambour Forecourt Live! event should be known for.

"This will be our third Live! event to activate the forecourt since its rejuvenation, and we are working towards them becoming monthly events in partnership with Andrea Kirwin, founder of Nambour business Peace Run Records & Agency," Cr Law said.

"Nambour Forecourt Live! aims to support local businesses and creatives. I encourage the Nambour community and the wider Sunshine Coast to come on down to support a plethora of local businesses who are the backbone of our community."

Event partner Andrea Kirwin said Nambour Forecourt Live was an opportunity to celebrate our vibrant community and the camaraderie of our town. "It's an activation of the forecourt, which has been beautifully refurbished by council," Ms Kirwin said.

"We've had some great family-friendly events so far and it's wonderful to see momentum

building as we move into 2022 and people are excited to come to the next one."

With plenty of seating, grassed areas to roll out a picnic mat and shady trees, the area is canopied by festoon lighting to provide an amazing space for people to relax, have fun and socialise.

The Nambour Library children's program will begin at 2pm sharing songs from different countries, as well as multicultural dances, a fashion show and guest speakers from 4pm then intermittently throughout the evening.

There will be two hours of creative workshops from 4pm, with Coco Creative weaving, and Gathered Folk Donut decorating and ornament making. The workshops are by donation and you can walk in and sign up on the day. There will also be face painting.

The main entertainment in the forecourt will kick off at 5pm.

Please register for a free ticket and bring the whole family down to Nambour Forecourt Live! for a fun, free community event from 2pm to 8.30pm.

Discover more Harmony Week activities and events being held across the Sunshine Coast from 15-21 March.

Brady's Fruit

FRUIT & VEGETABLE SPECIALIST
• Wholesale & Retail •

Col & Sandy Pearce

Ph/Fax 07 5445 9260

Park at your leisure where shopping is a pleasure

Woombye-Palmwoods Rd.
Palmwoods, Q. 4555

Earthmoving • Cranes • Trucks • Hydraulics • Attachments

GR FLEET SERVICES
DIESEL MAINTENANCE & REPAIRS

We service and repair all makes of earthmoving machinery, cranes and trucks.

From Warranty Servicing to hydraulic hose repairs we have you covered.

FULLY EQUIPPED WORKSHOP + FIELD SERVICE

Authorised Dealers

TAIPAN
AUTHORISED STOCKIST

EEF
EARTHMOVING EQUIPMENT

HIAB
AUTHORISED DEALER

GIA
CELEBRATING 50 YEARS

CASE
CONSTRUCTION

169 Nicklin Road, Palmwoods • 5457 3066 • grfleet.com.au •

Pack your suitcases for the Nambour Rummage Sale!

GRAB your best picnic rug, pop on your hat & sun-screen, pack a suitcase full of goodies to sell & set yourself up on the plush green lawn space at Nambour Tram Co.

A first for the Sunshine Coast, the Nambour Tram Company are excited to announce their fun, new, event for 2022, bringing all things vintage, pre-loved & handmade to Nambour.

"The idea for the Suitcase Rummage came from a Place-making Workshop held by a gentleman by the name of Andrew Hammonds," said Tramco Director Rhonda Billet.

"Andrew specialises in creating 'places for people'. We spent two days in Sunshine Coast Council's Nambour offices with Andrew and various community and Council employees, going over ideas to activate spaces in and around Nambour.

"It was 7-8 years ago now since we did that workshop with Andrew, and the idea has always been in the back of my mind.

"We have this lush, green space and Nambour Tram Co that we want the community to be able to enjoy, so we decided to go with a Suitcase Rummage concept.

"It's the first one ever to be held on the Sunshine Coast and the team at

Tram Co Nambour agreed that it was a concept that was a good fit for Nambour, adding to our vintage vibes."

The first event will be held on Sunday March 27th from 10am until 2pm.

You are invited to join in the fun. Suitcase Rummage sites are only \$5 per suitcase. Bookings can be made via the Nambour Tram Facebook page.

There will be a live DJ for the Rummage enthusiasts to enjoy on the day with a sausage sizzle and the Nambour Tram terminal will be open to the public for the event serving cold drinks. Attendees can also see the Vintage Petrie Cane Train Locomotive on display at



Tramco Director Rhonda Billet is encouraging people to get packing for the Coast's first ever rummage sale at the Nambour Tram terminal next to Coles.

Nambour Tram Company's onsite Tram Terminal.

Nambour Tram construction on track

The Nambour Tram construction is in progress, despite Covid 19 obstacles and should be up and running on the heritage listed Cane Train tracks by the end of 2022, with its construction to take place right here on the Sunshine Coast creating jobs and keeping money in our local region.

► In the meantime, pack your port and head to Nambour for the Suitcase Rummage Sale on Sunday March 27th from 10am until 2pm. Bookings can be made via the Nambour Tram Facebook page.

ASPHALT & BASE CONSTRUCTION

CALL JOSEPH 07 5478 9834 | 0402 932 159

38 YEARS EXPERIENCE FREE QUOTES



RED BROWN & BLACK ASPHALT | MACHINE & HAND LAID HOTMIX ASPHALT

- CAR PARKS
- TENNIS COURTS
- PRIVATE ROADS
- SALES YARDS & DISPLAY AREAS
- FOOTPATHS, KERBS
- SPEED HUMPS
- DRIVEWAYS
- GRAVEL ROAD
- MODERN, STYLISH EDGING
- CRACK SEALING
- EXCAVATIONS & DRAINAGE

www.asphaltbaseconstruction.com.au



The Denture Care Group

Sunshine Coast

Caloundra | Maleny | Woombye



BEFORE



AFTER

MAKE THE MOST OF YOUR HEALTH FUND THIS YEAR
CONTACT US TO FIND OUT HOW

Book a Consult with us this month so we can help you get the most out of your benefits and have you leave smiling.



Aaron Pryor

P 07 5442 1721

HINTERLAND VIEW DENTAL 6 Hill Street, Woombye

denturecaregroup@gmail.com



DO YOU VALUE YOUR TEETH?

Healthy Teeth, Healthy Smile

At Hinterland View Dental we will look after you.

- Locally Owned and Operated
- Experienced and Friendly Staff
- Serene Environment

NO GAP or 50% off all Check Ups and Cleans

Complementary Orthodontic and Cosmetic Consultations



www.hinterlandviewdental.com.au

6 Hill St, Woombye

(opposite the Woombye Bowls Club)

Call **5442 2378**



Hinterland View
DENTAL

Retired engineer warns Woombye of rail overpass

'It would wreck our town's village feel'

A retired consulting engineer says he fears Woombye's quaint village feel could be lost forever unless the town takes steps to ensure it doesn't become the site for a major rail overpass funnelling cars between the coast and Blackall Range.

Woombye resident Ken Hudson said it was important the town voiced its opposition to any such plans via a submission to the Sunshine Coast Council's Planning Scheme this month.

Council has said residents could have their say on proposed planning directions at both a regional and local level before March 31.

Mr Hudson said the community needed to get in early to ensure Woombye was crossed off the list of possible options for a potential bypass route. Such potential overpass options could be on Transport and Main Roads' radar as current railway underpasses at Woombye, Palmwoods & Nambour were inefficient because of their height restrictions.

"If a bypass corridor is not planned for now and included into the town plan, Woombye could be chosen as the through-town for a rail overpass and it would die as a beautiful little village shopping precinct," Mr Hudson said.

He said the Department of Transport might have already earmarked Woombye as a potential site for a much-needed railway overpass. This would attract heavier traffic loads straight through the centre of town.

"I understand that one possible TMR plan is to push a new route straight up from the Scout hut across the railway and cut almost up through Memorial Park and onto Blackall Street or into Woombye Streets," he said.

"That's why I'm getting so upset about all this. It's terrible. It would wreck the town."

Mr Hudson predicted the issue would come to a head sooner rather than later now that Brisbane had won the 2034 Olympics bid.

"The Olympics have brought forward the push for rail duplication," he said.

"If they do rail duplication they'll put an overpass in and we have to make sure it doesn't come through Woombye. And we need to be quick."

WCBA shares concerns

WOOMBYE Community & Business Association Vice President Grant Palethorpe said he shared Mr Hudson's concerns.

"I've raised it at meetings and spoken with groups like the Light Horse, Woombye Snakes FC and the Scouts," he said. "The concept of an overpass has been recognised in the current planning scheme."

Indeed, in the Woombye Local Area plan the scheme refers to "the possible future provision of a grade separated crossing within the local plan area".

"The State would be responsible to deliver the overpass, however there is no time frame for duplication or a definite plan to determine the impact on Woombye," said Mr Palethorpe.

"Uncertainty is heightened by talk of Fast Rail by Federal MP Ted O'Brien. It would be difficult for Council to forward-plan when there is so much up in the air."

He said an overpass would run counter to Council's looming Blackall Street streetscape project which was focused on slowing traffic and creating a safe pedestrian-friendly main street.

"The degree of residential development in Woombye and Palmwoods continues, yet roads haven't improved. It would be helpful if Council shared with the community the different options it has available. It's important for the community to engage early, we don't want a repeat of the issues we encountered with rail stabling. Further investigation is warranted, especially if more hinterland traffic is to be directed through Woombye."

Mr Palethorpe said he recognised that rail duplication and overpasses were State decisions outside the scope of Council's Planning Scheme. "However if we get some submissions under the Planning Scheme it isn't a bad thing."

How you can have your say:

► View Council's land use planning directions and provide your feedback at Council's "Have Your Say" Page www.haveyoursay.sunshine-coast.qld.gov.au by Thursday, March 31.



Palmwoods' Hinterland Blues fields were flooded but the new facilities remained high and dry.



Quota Park, Nambour.



Petrie Park Road, Nambour.



Nambour Connection Road.

PROTECT YOUR OUTDOOR AREA FOR ALL SEASONS



Keep out the weather and extend your living space.

- Our blinds are retractable when not needed and are available in colours and styles to compliment your exterior scheme.
- Available with spring, crank or motorised operation, they are hard wearing, and made to withstand our tough conditions.
- Ours is a well established local family business with the experience to advise and install.

Our quality products are made to last.

MOBILE SERVICE
We come to you!

Call us for an on-site measure and quote. Our experts will give you the right advice about the best product for your project.

5494 6898
www.customcurtains.com.au

CUSTOM Curtains and Shade

Local Hinterland Company

Blinds • Awnings • Curtains • Shutters • Security • Umbrellas

Proudly serving the Sunshine Coast for over 16 yrs

DentalExcel

WE'RE HERE FOR YOU!

NOW OPEN FOR ALL PROCEDURES

In line with Stage 1 restrictions, we look forward to welcoming you back for ALL of your dental needs.

COVID-19 Screening measures in place to ensure safety.

Dental Excel is grateful for the dedication of our staff who have been there for your emergency treatments throughout this crisis. We are still here for you and still adhering to strict hygiene precautions to keep you and us safe.

Dental Excel is proud to be a part of the MARLEY DENTAL GROUP

DentalExcel

Bulk Billing Medicare Child Dental Benefit Scheme for Eligible 2-17 yrs

- Family Dentistry • General Dentistry • Cosmetic Enhancements • Zoom® Teeth Whitening
- Veneers • Crown and Bridge • White Fillings • Preventative Dentistry • Children's Care
- Gum Disease Maintenance • Dentures and Veterans Affairs • Dental Implants

Payment plans available - no interest ever

Open Monday to Saturday • Early and Late Appointments

Ph: 5445 0166 2-4 Margaret Street, Palmwoods www.dentalexcel.com.au



Woombye Snakes Football Club fields were inundated.



Major damage to Hovard Road at Bald Knob.



Landslip: Policeman Spur Road, Booroobin.

Nambour Rain February (rain to 9am)	
Thu Feb 3, 22	16
Fri Feb 4, 22	38.8
Sat Feb 5, 22	0.6
Sun Feb 6, 22	1.4
Mon Feb 7, 22	4.0
Sun Feb 13, 22	0.2
Mon Feb 14, 22	4.0
Tue Feb 15, 22	11.2
Wed Feb 16, 22	5.2
Thu Feb 17, 22	0.8
Sun Feb 20, 22	20.0
Mon Feb 21, 22	0.8
Tue Feb 22, 22	8.6
Wed Feb 23, 22	217.2
Thu Feb 24, 22	17.8
Fri Feb 25, 22	74.0
Sat Feb 26, 22	267.0
Sun Feb 27, 22	124.2
Mon Feb 28, 22	43.8

Deluge takes toll on hinterland

LANDSLIPS and wash-outs from torrential rain have damaged or disrupted roads, bridges, culverts, paths and drains throughout the hinterland.

Volunteers sprung in to action on the weekend as cleanup efforts began in earnest over the region.

Nambour received 839mm rain this February, well above the February average of 259mm. Heaviest rain was on Wednesday 23rd (217mm), Saturday 26th (267mm) and Sunday 27th (124mm). February is traditionally the wettest month of the year for Nambour.

However, last year only 64mm fell in February. March average rainfall in Nambour is 228mm.

Nambour had received 124mm of rain for the first seven days of March



until Monday March 7. The average for the whole of March is 132mm.

Last Monday, Tuesday and Wednesday Division 5 Cr Winston Johnston visited almost every rural road in his Division.

“Town streets and parks have been easier for Council employees to access promptly, therefore my focus was on all non-urban areas,” Cr Johnston said.

Cr Johnston said damage was significant in some areas and all gravel roads would require maintenance, regravelling and/or grading over the coming months.

“Due to the great work of Council road gangs, roads where there are landslips have now been either reopened or closed to traffic where there is an alternate access road.

“Local farmers and plant operators as well as Council’s works teams have been outstanding in working long days and weekends to repair or make safe the worst damaged areas. Thank you also to the huge number of residents who have assisted friends, neighbours and our community throughout and following this weather emergency.”

Cr Johnston urged patience while repair work was being carried out according to priorities.

“We follow a system of dealing with providing road access and repairing the worst damaged areas first. In the mean time, please travel according to the current condition of the road and be courteous to other road users.”

He said all damage would be repaired in due course. However if you require urgent assistance, you can phone him on 0429 076 066.



Nambour Plaza’s carpark was closed off due to flooding and for the clean-up.

NAMBOUR
wesleyan METHODIST CHURCH

SUNDAY SERVICES 9AM
165 Perwillowen Rd, Burnside

KIDS CLUB
Meets Friday Fortnightly 4pm - 6pm

Sunday School During the Service in School Terms

For enquiries contact our office:
P 5476 4263
We're not just a church, we're a family

URBAN DEPOT
cash for containers.

SUMMER HOURS

8AM - 4PM
MONDAY TO FRIDAY

8AM - 2PM
SATURDAY

9AM - 2PM
SUNDAY

HOW IT WORKS

- Urban Depot and the Containers For Change scheme makes getting paid for recycling easy.
- Enjoy the drive through recycling experience at Urban Depot!
- Collect your eligible containers and remove the lids.
- Let us unload, sort and count your containers while you stay in your car.
- We bring your cash refund to your vehicle or we deposit your refund into your scheme ID account.

THE ONLY FULL SERVICE CONTAINERS FOR CHANGE DRIVE THROUGH DEPOT ON THE SUNSHINE COAST!

FULL-SERVICE DRIVE THROUGH (NAMBOUR)
7/1 WINDSOR RD, BURNSIDE 4560
CALL 0492 846 936

MORNINGSTAR DIGITAL

YOUR LOCAL WEB DEVELOPER

Mention this ad for a locals discount

1300 392 542
M11 / 65 Currie St, Nambour 4560
www.morningstardigital.com.au

Exhibition running from March 19th – April 30th



Alice Graham

ORIGINAL ARTWORKS

Bright & Beautiful

Yandina Art & Framing



From left, William McWha, Carter Ford, Dante Fallini, Monique Kropp, Maneeka Hunter, Bonnie Layden and Winter Kerswell.

St Joey's students don Tutus for Tonga

STUDENTS from St Joseph's Primary School Nambour have recently been scouring local costume shops for a good cause. The kids were looking for tutus in order to support the Tongan volcano and tsunami appeal.

The cleverly titled "Tutus for Tonga" campaign took place February 22 with children encouraged to contribute \$2, keeping in line with the "two" theme of the day.

Year 6 student Maneeka Hunter said it was important to learn about how natural disasters impacted our world.

"We have been learning about natural hazards in class and we all thought it would be great to help the people of Tonga," Maneeka said.

The school partnered with the Caritas Australia charity to ensure the money raised was directed to where it was most needed.



Yandina Country Music welcomes Kerri

YANDINA welcomes the vibrant Kerri O'Keefe, pictured, as guest artist at the ACMA country music concert on Sunday 20th March. With talent, full-on energy and a big personality, you are guaranteed to be highly entertained!

See you at the Hall of Fame, 24 Steggalls Road at 12 noon. Doors open 10.30 am. You'll enjoy traditional country music, including more diverse, crowd-pleasing favourites and a great house band. Walk-ups welcome. Raffle and door prizes, byo lunch, free tea and coffee. Entry \$8. Enquiries 0437 191 004.



From left Jayda Allen, Chloe Saliba, Jesse Saliba and Levi Deans take a break from training for the State Championships.

Local club hosts weightlifting championships at Crusher Pk

A small Nambour club with huge spirit is lifting above its weight to host three state titles events in April.

The Sunshine Coast Weightlifting Club has been granted the rights to host the Queensland Under 13, Under 15 and Youth (Under 17) State Championships.

The event will run from Friday to Sunday April 8-10 at the club headquarters at Crusher Park, in Crusher Park Drive, Nambour.

"This is the first major event for our club in five years," said Club Spokesperson Nicole Deans. "We will have competitors from all over Queensland come to compete. Weightlifting is a very technically demanding sport, the skills and techniques that these young athletes will display at the State Championships will be of a very high standard."

Weightlifters will compete within body-weight categories as well as age groups. The State Championships will be a qualifying event for the U15 and Youth National Titles to be held in June.

Sunshine Coast has a number of talented youth weightlifters who will be competing at this event across all age groups. "Currently we have two youth lifters, Levi Deans and Chloe Saliba, both 15 years of age, who are members of Australian Youth squads," said Nicole.

"The squads are a pathway for these talented athletes to build their skills for future national and international competitions, in particular Commonwealth and Olympic games."

Levi is a State and National record-holder, as well as a State and National Champion lifter. Levi and Chole also compete above their age groups as both have made qualifying totals to compete as U20 and U23 lifters.

"Both lifters will attend intensive weightlifting camps at the AIS this year," said Nicole.

"Other club members we expect to do well at the Championships are Jayda Allen and Jesse Saliba. Our athletes have been very busy training in the lead up to this event. This will be a wonderful opportunity for these lifters to lift in front of a home crowd."



Levi Deans in action at training.



"We are a small not-for-profit club with a wonderful community spirit."

► Contact head coach Barry Harden on 0439 278 707 or Nicole on 0413 514 954 for further information about the club.



Scott Ludlam is "articulate, informed, bristling with ideas".

Outspoken Maleny presents Scott Ludlam

OUTSPOKEN is back! And is delighted to be hosting events again in Maleny. Our first author is Scott Ludlam, talking about his recent book Full Circle.

Even if you never voted for the former senator, or his party, you would have had to be aware of Scott Ludlam's keen intelligence and integrity (remember his midnight speech to the empty Senate, inviting Tony Abbott to Western Australia? There was nobody else in the chamber at the time, but several million people watched it online) What we didn't know about then was the breadth of his curiosity, the stretch of his imagination, or, for that matter, the reach of his ambition. We don't tend to expect these things in our politicians. More's the pity.

The tag line on the cover of Full Circle says simply: Australia lost a Senator, the world gained a luminous writer, which just about sums it up. Ludlam proves to be more than just erudite, he's prepared to enlist descriptions of the very foundations of life into his argument for a better understanding of our place in the world, and the responsibilities that come with it.

In Full Circle Ludlam seeks old and new ways to make our systems humane, regenerative and more in tune with nature. He shines a light on the bankruptcy of the financial and political systems that have led us here, taking the reader on a journey to all the corners of the world. What he discovers along the way is that we stand at a unique moment in time, when billions of tiny actions by individuals and small groups have the chance to coalesce into a great movement, one with the power to transform history.

Scott Ludlam is articulate, informed, bristling with ideas. He will be in conversation with Steven Lang. This is an Outspoken event you won't want to miss. Our introducing author will be Kevin Smith, talking about his debut collection of poems, Awake to the Rest of My Days. Mark Tredennick, writing about Kevin said his poems "remind us what poetry is for".

► Maleny Community Centre; Wednesday March 23; 6 for 6.30pm; Tickets \$22, Students \$15; www.outspokenmaleny.com.

AUTOELECTRICS QLD

& Mechanical

Air Conditioning

Auto Electrics

Mechanical Repairs

Log Book Servicing

227 Nambour Connection Rd, Woombye

f
autoelectricqld.com.au
5442 2278

Need legal advice about retirement living?

David Wise Solicitor

Specialist advice for residents and prospective residents of retirement villages, over 50's resorts, and manufactured home parks, including entry, exit, dispute resolution, Wills, Powers of Attorney and Estates.

0412 254 080 | principal@davidwisesolicitor.com.au
www.davidwisesolicitor.com.au

MEMBER Queensland Law Society.

SPAR



WOOMBYE

Market Specials



\$1.50
EA.

Shepard Avocado



\$3
EA.

Prepacked Button or Cup Mushrooms 200gm
\$15 per kg



\$4.75
KG.

Red Seedless Grapes



\$3.50
EA.

Prepacked Brushed Potatoes 2kg \$1.75 per kg



\$1.50
EA.

Prepacked Carrots 1kg

LOW PRICES ALL DAY EVERY DAY



PAYLESS EVERYDAY

\$23 kg.

Boneless Leg Ham *From the deli*



PAYLESS EVERYDAY

\$20 kg.

Silverside Half *From the deli*



PAYLESS EVERYDAY

\$12 kg.

Middle Bacon *From the deli*

SCAN TO SUBSCRIBE TO OUR LATEST WEEKLY CATALOGUE STRAIGHT TO YOUR INBOX!



Specials available Wednesday 9th March until Tuesday 15th March 2022

WOOMBYE

20 BLACKALL ST

OPEN 7 DAYS!

PH: 5413 8007



Specials available while stocks last. Limit rights reserved. We reserve the right to correct any printing errors and omissions.

Seasonal Set Menus return to Flaxton Gardens

FLAXTON Gardens has just launched their March/ April seasonal set menu and is excited to showcase fresh, local produce in a range of innovative and unique dishes.

“Our seasonal set menus have always been very popular with diners and – with the bi-monthly change of every menu – I am blown away by the creativity of our chefs, who uphold the motto ‘Honesty on a plate’.

“Our food is prepared on-site by locally born and raised Head Chef Oskar Robinson who is passionate about supporting locals from producers to staff and customers,” said Business Operations Manager Mariana Thompson.

This season’s set menu with two and three courses includes dishes that are bursting with flavour and freshness.

There is something on the menu to please everyone, as can be seen from these dishes:

- Prosciutto and Fresh Grilled Peaches with a Roquette Salad and Balsamic Dressing;

- Confit Pork Shoulder with a Crunchy Apple and Smoked Potato Salad; and

- Poached Pear on a Honeycomb and Pistachio Crumble with Maleny Vanilla Bean Ice Cream.

“We always offer our signature house specialty, which is the Flaxton Speciality Souffle,” Mariana said. “The preparation and serving of this dish are quite ceremonial and there is no way we would drop it from the menu. It is much loved by our regular guests. Our very more-ish



Flaxton Gardens Chef Oskar Robinson with a poached pear dessert.

Right: Hannah balances three dishes from the new menu including Confit Pork Shoulder, Bunya Nut and Sweet Pea Risotto and the Poached Pear dessert.



Cheesy Garlic Bread is also back by popular demand.”

The two-course meal is \$44 per person and the three-course meal is \$59 per person. You will enjoy a complimentary glass of Flaxton Grove House wine or Flaxton Grove Sparkling Brut when ordering the three-course meal.

► Contact Flaxton Gardens on 5445 7450 to reserve your table. See menu below.



Sublime will feature György Déri on cello, Anne Horton on violin, Yoko Okayasu on viola and Monika Koerner on flute.

Ensemble Trivium to perform ‘Sublime’ music at Montville Village Hall

BRISBANE-BASED chamber music collective Ensemble Trivium is renowned for its innovative programming and for collaborating with the finest local musicians and composers. They will perform “Sublime” on Sunday 20 March, 3pm at Montville Village Hall – bringing together the best Brisbane has to offer for a night of music guaranteed to lift the spirits.

“For people already struggling with the demands and challenges of a new year, the first concert of Ensemble Trivium’s 2022 season will soothe your soul, calm your mind and delight your eardrums,” said artistic director Monika Koerner adding that it was an honour to perform alongside some of Queensland’s most lauded musicians.

“One of the things that sets Ensemble Trivium apart is our collaborations. I’ve always sought to pair bold and experimental programming with musicians who understand and commit to what we’re trying to bring to local audiences. At the end of the day, it’s about delivering a multi-fac-

eted experience that transports and delights patrons.”

The bill will feature Joseph Haydn’s Quartet in C major op 5. This music will be presented alongside Debussy’s Six Epigraphes Antiques and Antonín Dvořák’s Quartet in F major op.96 ‘American’.

Monika said Ensemble Trivium concerts were for lovers of classical music and novices alike.

“We always try to bring new audiences to the concerts by programming a mix of beloved classics, forgotten gems and new pieces by emerging composers. I like to think that our performances open doors for new audiences to develop a love of chamber music.”

► The concert will be held on Sunday 20 March, 3pm at Montville Village Hall. For more details visit www.monikakoerner.com/ensemble-trivium. To book www.trybooking.com/BXKGR



SEASONAL SET MENU MARCH & APRIL 2022

ENTRÉE

Bunya Nut & Sweet Pea Risotto with a Parmesan Wafer v

OR

Prosciutto, Fresh Grilled Peaches with a Roquette Salad & Balsamic Dressing *gf, df*

OR

Thai Whitebait Fritters with Egg Plant Caviar and a Herb Salad *gf, df*

MAINS

Crispy Skin Barramundi with Mussel & Fennel Fricassee *gf*

OR

Confit Pork Shoulder with a Crunchy Apple and Smoked Potato Salad *gf*

OR

Sautéed Gnocchi, Pumpkin Puree and Roasted Organic Vegetables *gf, vegan*

DESSERT

Poached Pear on a Honeycomb and Pistachio Crumble with Maleny Vanilla Bean Ice Cream *gf*

OR

Lemon Curd Tart with Meringue & Sorbet *gf*

OR

“Flaxton Specialty Souffle” *gf, df available*

Baked fresh to order & topped with Vanilla Bean Ice Cream & Raspberry Coulis

2-Course Meal - \$44.00 | 3-Course Meal - \$59.00

Enjoy a complimentary glass of Flaxton Grove House Wine or Flaxton Grove Sparkling Brut when ordering a three course meal.

EXTRA NIBBLES TO ORDER

Cheesy Garlic Bread 8.00

Toasted Fresh Flaxton Bunya Nuts with Pesto & Balsamic 8.00



High Teas

Wednesday – Sunday
10:30am and 1pm

Season Set Menu

Wednesday – Sunday
12:00pm

Flaxton Feasts and Roasts

Wednesday – Sunday
12:00pm

Bookings Essential.

For Seasonal Set Menu, bookings are preferred, but walk-in’s are also welcome.

CALL NOW TO BOOK

07 5445 7450

313 Flaxton Drive, FLAXTON

flaxtongardens.com.au



Pacific Chamber Players is the Sunshine Coast’s favourite chamber ensemble.

Pacific Chamber Players present concerts

PEARLESQUE chamber music by world-renowned composers will be performed by the Pacific Chamber Players at local halls on March 12 and 13.

Concerts will be held at Palmwoods Memorial Hall on Saturday March 12 at 2pm and Cooroy Memorial Hall on Sunday March 13 at 2pm.

Before the 18th century, European music was dominated by folk and church music. The 19th century saw the rise of classical music some of which will be performed.

This experienced group is Sunshine Coast’s favourite chamber ensemble. It will perform the Romantic Trio Pathétique by Glinka; the

hypnotic Overture on Hebrew Themes by Prokofiev and the rarely heard yet delightful Trio Miniatures by Paul Juon.

The program will also include music by Tchaikovsky, Two Pieces for Bassoon and Piano; Borodin, String Quartet No 2, and a bit of Shostakovich. Maybe Borodin’s String Quartet will bring back memories of the first episode of Star Trek: Discovery?

► Tickets are priced Adults \$30/concession \$28/School students \$10. To book tickets please visit www.pacificchamberplayers.com. Cash sale tickets will also be available at the door. For further information please phone 5446 8128.

Native Plants Sunshine Coast AGM this Sunday

NATIVE Plants Sunshine Coast will hold its AGM on Sunday March 13.

The AGM will be followed by morning tea and a butterfly educational event at Maroochy Botanical Gardens, Tanawha.

Details and rsvp to Spencer at: spencer.shaw@brushsturkey.com.au

Rock & Roll dance at Belli Hall includes free lesson

THE Belli Community Hall is holding its first Rock and Roll dance for the year on Saturday March 26 at 6.30pm. Food and drink available, with a dance lesson at the start for all the young ones! Lets get out and dance!

Love your community, love your hall! Please see FB for updates or call 0448 948 198.

Manpreet bakes cakes that taste great *and* they are good for you!

IF you have a sweet tooth and specific food sensitivities, Manpreet Kaur of Husk and Honey Cafe in Nambour has created a beautiful range of made-to-order cakes to satisfy your requirements and your taste buds.

"Many people have allergies or dietary restrictions which means that they struggle to find cakes and sweets for special occasions," said Manpreet.

"So I decided to get busy in the kitchen and am working on a variety of cakes that cater to these people."

Manpreet has developed delicious cakes that range from gluten and/or grain free, to raw, vegan, refined sugar free, nut free and keto friendly.

"I am trialing one cake per week," Manpreet explained. "We do not keep the cakes in the cabinet at Husk and Honey to sell by the slice because we only use absolutely premium ingredients, and no preservatives. So if we don't sell the entire cake, it is an expensive waste," she said.

"We are finding that our cakes are in very high demand online because people want something really special for celebrations, and they want to buy the entire cake."

To date, Manpreet's range includes Chocolate Mousse Cake (GF) and Almond Cake (GF), raw Lemon Curd Cake (GF), refined sugar-free Coffee Walnut Cake, raw Sprouted Raspberry Cake, raw Acai Zebra Cake, raw Roll Cake and raw Almond Strawberry Chocolate Cake.



Now you can have your cake and eat it too: Manpreet Kaur of Husk and Honey Cafe in Nambour makes cakes to satisfy your dietary requirements and your taste buds.

Occasional and daily cake menus will soon be made available.

Manpreet is also making traditional Indian sweets and treats which are now available online.

"Indians love their sweets and it is difficult to buy home made traditional sweets here in Australia," she said. "So I have added Indian favourites such as Coconut Laddu, Pure Desi Ghee Atta Biscuits, Besan Barfi and Gulab Jamun to my online range," she said.

► To view Manpreet's full range of sweet goodies, check out her Instagram account @cakesandsweets_by_manpreet.



Wendy Turton, front, and her "Sunshine Chimes" meet weekly in the Mapleton Hall to compare notes and share music and laughter.

Handchimers bring music, fun and fellowship to Mapleton Hall

THE Sunshine Chimes is a U3A Sunshine Coast interest group. Now boasting a full complement of 12 members, the group meets every Tuesday at 10am in the Mapleton Community Hall to play the Handchimes and fill the building with beautiful notes.

Wendy Turton is the founder and conductor, crediting her ability to engage and lead the group with her decades of primary school music teaching. In particular, Wendy says her involvement with the Queensland Orff-Schulwerk Association gave her the skills and confidence to teach creative music with students of all ages and skills.

It takes some coordination with each participant required to literally "chime in" according to their role in the piece. When it all comes together

the sound is quite mesmerising.

"There is no audition for Handchimes participation," said Wendy.

Skill levels vary

"The skill level varies from those who haven't played instruments since they were children to those who hold degrees in music — and that's not me," she laughed. "Many people have never had the opportunity to have formal or any music lessons so it's wonderful to introduce them to the world of music."

The repertoire varies from the Great Classics through to the Beatles and the group has impressed at various public performances.

An excursion is planned where the chimers will enjoy a performance by the Brisbane Bells, at Morningside, on March 27.

Just as important as the music itself is the camaraderie within the group, with members supporting each other socially and maintaining good mental health through the sharing of music and laughter, followed, of course, by morning tea. Handchimes are musical instruments which are rung by hand, similar to handbells. Typically, they are tuned square tubes with an external clapper mechanism.

Wendy said the group was looking for donations as they need to raise \$4000 this year to purchase handchimes to replace the current ones which are on loan. If you can help please contact Wendy via u3aoffice@u3asunshine.org.au.

► Although Wendy's handchimes group is full, there are dozens of other courses accessible through www.u3asunshine.org.au/newweb/



A home loan with serious flex? Bank you very much!

With unlimited repayments and online redraw[#], our Home Loans are full of freedom and flex.

Heritage | Palmwoods
Community Branch

Visit your local community branch at Palmwoods Plaza or call 07 5294 0600

*Redraw is not available on Bridging Home Loans. You must be ahead on repayments to redraw. Lending criteria, limits, conditions, fees and charges apply. Target Market Determinations available at heritage.com.au/TMD Heritage Bank Limited ABN 32 087 652 024, AFSL and Australian Credit Licence 240984.

Book recounts Neighbourhood Centre's history

MALENY Neighbourhood Centre (MNC) is at the end of Bicentenary Lane in Maleny.

Many locals do not know that it exists, what happens there, how it came to be, and when and how MNC might help them.



In June 2020 MNC Vice President Jim Straker began his quest to answer these questions. In July 2020 Neil Byrne agreed

to undertake the daunting task of locating the people who had been involved over the years and acquiring the information.

In June 2021, Wendy Oakley agreed to undertake the layout for the book and to design its cover and she did a wonderful job.

A suitable printer was found and some significant donations were received towards these printing costs.

On February 23 'The Story of the Maleny Neighbourhood Centre' was launched during an evening gathering at MNC of involved people including two of the three ladies who started it all.

The sight of the finished article amazed everyone. So much information was gathered, collated and presented in an eye catching book.

MNC has been known by different names and has been located at a wide variety of sites: RSL, Guide Hut, Butter co-op, house near the hotel etc.

In 1988, there were some issues which prompted the journey - no facilities for youth, lack of transport, difficulty accessing government services and a tragic suicide. Three local concerned ladies met and decided that something had to be done to address these circumstances. And the rest is history.

► During March, the book will be on display at the Maleny Library and at a kiosk day on March 16. It is now available for viewing and purchase at MNC for \$30. This is a great price for such a cross section of local history.

Foundation makes sound investment in Tram terminal

SUNDALE Community Foundation has funded more than \$200,000 in cash grants to 49 eligible recipients across Nambour and district.

One of the 12 projects funded in the 2021 round was \$4411.60 for the community event space at Nambour Tramway on Mill Street Nambour.

"This grant was funded by community partner Ken Mills Toyota," said Foundation Board Member Wayne Greenham.

Brett Mills from Ken Mills Toyota said his family has a long and proud association with Nambour. "So it is an absolute pleasure to be able to support the Nambour Tramway Company through the grants program," he said.

"We believe this grant for audio-visual equipment will have a significant impact on the usability of the community space at the depot on Mill Street and we look forward to seeing events and gatherings thrive here for many years to come."

The Nambour Tramway Company were thrilled to be announced as recipients of a Sundale Community Foundation Grant.

"Nambour Tram Co is currently in the construction stages of our Tram build, with the terminal now complete," said Nambour Tram Company Chair Greg Rogerson.

"We look forward to now welcoming many of the public to the space via our events and func-



Sundale's Wayne Greenham, Ken Mills Toyota owner Brett Mills and Tramco directors Rhonda Billet and Peter Clark at the Nambour Tram Co terminal where the audio-visual equipment is installed.

tions held in the terminal building. Having the right audio-visual equipment in the terminal building is pivotal for our success and the Sundale Community Grant will largely assist Nambour Tram Co in delivering this for the community to enjoy long term.

Nambour Tram Company Board Director Rhonda Billet agreed.

"As we get closer to our Tram being built, we are hosting and holding more and more community events in and on the grounds here at Tram Co. This grant will allow us to continue to grow our space, for the community and the future of Nambour.

"I'd like to also express an added thank you to Ken Mills Toyota. Without the business community getting behind community organisations, things like this just simply would not happen and for that we thank them for their contribution also."



An eager audience packed Majestic Cinemas for last year's Flickerfest.

Majestic Cinemas to present 'kaleidoscopic carnival of short films'

FLICKERFEST - Australia's largest Short Film Festival - is excited to be returning on its National Tour to Majestic Cinemas in Nambour this weekend.

Flickerfest showcases the "Best of International Shorts" and the "Best of Australian Shorts" program highlights from its recent Bondi festival competitions.

The short films will be shown Friday and Saturday March 11, 12 from 7pm.

"The films are all entertaining, inspiring, award-winning and fresh from their premieres in competition at Flickerfest Bondi, giving Nambour Flickerfest audiences a window into the hottest contemporary shorts from at home and across the world today," a spokesperson said.

International film highlights include the delightful New Zealand comedy 'Space Invader' and the delightful and heart warming UK film 'Roy'.

Australian highlights include the quirky black space comedy 'The Home Team' starring comedy legend Paul McDermott and acclaimed actress Tara Morice ('Strictly Ballroom') and the fun neighbourly drama 'Stonefish'.

The moving sibling drama 'You Me Before And After' starring Yael Stone also shines on the big screen as does the stunning 'Giants' from director Eddy Bell.

► Tickets and Info: www.flickerfest.com.au/tour/nambour-qld/



Join our volunteer community!

Looking to do something that is both rewarding and makes a difference in your community?

RangeCare's volunteers play a significant role in supporting both our clients and staff. Our generous volunteers help support our clients in living their best life by delivering a comprehensive range of services.

We are currently looking for volunteers who can fill the following roles:

• Aqua Aerobics Volunteer
Mondays in Nambour

• Home Visiting Volunteer
Nambour area

• Day Respite Centre Music Volunteers
Once a month in Nambour

• Op Shop Volunteers
Fridays & Saturdays in Mapleton

• Veggie Gardener
Nambour area

• Day Respite Centre & Kitchen Assistant
In Nambour & Gympie

Volunteer Positions also available in the Gympie Region

All applicants are required to have full COVID vaccination or proof of medical exemption to volunteer at RangeCare.

To find out more or to become a RangeCare Volunteer, give us a call on 07 5455 7044 or visit www.rangecare.com.au/volunteer



Live your best life!

New Nambour gym really packs a punch

A new gym opened in Currie Street Nambour on Sunday, with owners Katie and Daniel Culgan excited to bring the HIIT Station franchise to town.

"We have been in and around the fitness industry for many years and have tried lots of different types of gyms," Katie said. "But it wasn't until we joined a HIIT Station gym on the Coast that we really felt we had found 'our family'."

HIIT Station run 28 Classes each week inspired by the sport Muay Thai Kickboxing.

HIIT stands for High Intensity Interval Training. It involves alternating short bursts of intense work, with a low intensity recovery, which is ideal for beginners chasing a fast result.

Classes incorporate strength & conditioning methods to help achieve a strong, lean physique.

"When the opportunity arose for us to become HIIT Station franchisees, we jumped at it, because we love this brand and we love to help people achieve their fitness goals in any way we can," said Katie. "I have met many people who are motivated to make healthy changes in their lives, but are overwhelmed by the process of doing this," Katie explained.

"Our 8 Week Transformation Program is a wonderful starting point because it educates people about nutrition and exercise and supports them to make a start, whatever their current state of fitness is. It can be about losing weight or gaining muscle too."



Owners Katie and Daniel Culgan are excited to bring the HIIT Station franchise to Nambour.

People of all ages and levels of fitness are welcome and catered for at the HIIT Station.

"We have members aged from 17 to 70, working out alongside each other in ways that are tailored to them," Katie said. "And you can have as little or as much support as you want from our trainers."

"Daniel has played rugby league all of his life and he has a real passion for training sportsmen, footballers in particular."

► HIIT Station Nambour is at 61 Currie Street (right next to Nambour Social). You can call them on 0480 322 743.

Your voice will be heard on Planning Scheme: Cr Law

WITH Sunshine Coast Council gathering feedback for its 2024 Planning Scheme – which will guide the way we grow and develop as a region – the *Gazette* asked Division 10 Cr David Law for his thoughts on hinterland priorities.

• What are the common/main complaints you hear when it comes to development/growth and the planning scheme?

"I often hear from people who want the rules to be much stronger to restrict development and from the developers and construction industry that the rules are too severe. The planning scheme and regulations determines the outcomes and ideally development should be sustainable and contained within the urban footprint. When a new sub-division is being developed I usually hear from the residents nearby who would prefer there not to be a change in their environment and outlook, which is completely understandable."

"At all times it is important to ensure that the development meets the requirements of the scheme and when it does not then it is not permitted to proceed."

"Everyone has a point of view and now is the time to ensure those views are shared to help shape the future for our region."

• What do you think the community wants to see changed (if anything) in the new planning scheme?

"I will leave this question as I want people to tell us what they want without my or anyone else's influence."

• Why is it important for people to have their say about the 2024 planning scheme?

"The consultation period that is running from now until the end of March is an opportunity for everyone to provide their views for inclusion in the first draft of the new planning scheme. People can give feedback on the local area plan relevant to where they live and tell us what is important to them about where they live. This is a unique chance to actually influence the first draft of the new planning scheme and the level of interest at the moment is very strong. The feedback can include ideas about



Cr David Law

where business commercial and industrial land should be available to help support local employment.

"I encourage everyone to get involved and have your say. You do not need to be an expert. But, as a local, your experience and ideas for the future are really important. We cannot change what has already happened but we can all influence what can happen in the future. Every

comment and suggestion will be considered as this first draft is written. Once the first draft is completed then the next period of consultation on that draft will occur. This is expected to be within 12 months."

• Is it important to have some growth? How much, do you think, is optimal growth?

"People are choosing to live on the Sunshine Coast and at the moment we are in a housing period of peak demand. We need more houses for rental and ownership for everyone who wants to live here. It is difficult to predict how long this high demand will continue for and we need to have land identified for future housing and commercial uses."

• Why is there a trend towards so-called "sardine suburbs" that we seem to see popping up?

"Over the years individual lots have become smaller and this will not doubt continue and these areas are medium and high density zoned areas. This type of development reduces "urban sprawl" and enables the services and facilities people want to be available near where they live. It is not what everyone wants but we need to provide the diversity, choice and opportunities for new residents."

• What else would you like to say?

"Please get involved and explain your vision for the future where you live."

How you can have your say:

► View the proposed land use planning directions and provide your feedback by completing the online surveys at Sunshine Coast Council's Have Your Say Page haveyoursay.sunshinecoast.qld.gov.au before Thursday, March 31.

GOOD YEAR
AUTOCARE *Good to go*

ALLCOAST
TYRE SOLUTIONS

22 Coronation Ave, Nambour

Ph: 07 5343 8344

(Opposite the Nambour RSL)

Providing the right advice, the right product and best value for money in tyres and services while meeting budget and understanding your driving style.

OUR SERVICES www.allcoasttyres.com.au

TYRE FITTING

**Car, SUV & 4WD's
Mowers & Wheel Barrows**

- Tyre Repairs
- Tyre Rotations
- Wheel Alignments
- Fleet Tyre Servicing & Management
- 24/7 Commercial Mobile Tyre Service

(All Tyre brands available)

Locally owned by John & Peter O'Leary

Ask us about our 25% off tyre deals!



ELITE FOOT CARE
Podiatry • Orthotics • Footwear

Online Bookings Available

Call Elite Foot Care on
5328 3588
to book
your appointment

www.elitefootcare.com.au

For online bookings

DO YOU HAVE FOOT AND LEG PAIN?

The team at Elite Foot Care can treat:

- Heel Pain
- Achilles Pain
- Shin Splints
- Knee Pain
- Hip Pain
- Lower Back Pain
- Arthritis
- Ingrown Nails
- Kids Podiatry

• Private Health Rebates • Medicare Rebates
• DVA Registered • NDIS • Workcover
• Home Care Packages • No Referral Needed

**4/40 Wilson Avenue, Woombye
Corner of Blackall Street and
Nambour Connection Rd**

OPEN HOURS: Mon-Fri 8:30am - 5pm www.elitefootcare.com.au

What's On in the Hinterland

Local Sport, Events and Entertainment coming up. Preference given to local events of widespread interest. Please check details with organisers. Submissions to editor@sunshinevalleygazette.com.au.

Every Saturday: Yandina Country Market from 6am to 12pm, North Street, Yandina.
Every Saturday: Kenilworth Country Markets from 8am to 1:30pm at Kenilworth Town Park, Charles Street.

March 10: Nambour Chamber of Commerce presents Coffee Catch Up from 7.30-8.30am at Nambour Social.

March 11, 12: Flickerfest 2022, National & International Film Festival. Majestic Cinemas, Nambour. www.flickerfest.com.au/tour/nambour-qld/

March 12 & 13: Pacific Chamber Players Concerts Palmwoods Memorial Hall, March 12 at 2pm; Cooroy Memorial Hall Sunday March 13 at 2pm. www.pacificchamberplayers.com

March 13: Native Plants Sunshine Coast will hold AGM followed by morning tea at Maroochy Botanical Gardens, Tanawha. spencer.shaw@brushturkey.com.au

March 14: Maleny Scottish Country Dance group has re-commenced for the year, in the RSL Hall Maleny, on Monday nights from 7 to 9pm. A free 'Come and Try' night will be held in the hall on Monday March 14. Contact Linda 0429 654 033 or Helen 0432 251 606.

March 15: Harmony Week begins. www.sunshinecoast.qld.gov.au/harmonyweek

March 17: St Pats Day at the Palmwoods Bowls Club, Irish inspired buffet and prizes for best green outfit. Bookings required 5445 9190 functions@palmwoodsbowlsclub.com.au.

March 18: Nambour Forecourt Live! (in front of council's Eddie De Vere building on the corner of Currie and Bury Streets). An afternoon of live music, multicultural dances, workshops and food trucks from 4-8.30pm.

March 18,19: 'Girl's Guide to World War' Maleny Community Centre on Friday and Saturday. Bookings www.malenyartscouncil.com.

March 20: Brisbane-based chamber music collective Ensemble Trivium will perform "Sublime" at 3pm at Montville Village Hall. To book www.trybooking.com/BXKGR

March 20: Riley Lee is returning to Maleny to present a concert St Georges Anglican Church Walker Drive, at 2pm. Bookings: www.trybooking.com or phone Susan Myring on 5494 3062.

March 21 & 22: The Mobile Blood Donor Centre visits Maleny at the Showgrounds, 13 Maleny-Stanley River Road, Monday 21 March from 7am-2pm and Tuesday 22 March from 11.30am-6pm

March 26: Belli Community Hall Rock and Roll dance, 6.30pm. Food and drink available, dance lesson at the start. Please see FBook for updates or call 0448 948 198.

March 27: Pack your port and head to Nambour for the Suitcase Rummage Sale at the Nambour Tram Co Terminal (next to Coles) from 10am to 2pm.

April 4, 5: Great Walk for Parkinsons, from Mapleton to Lake Baroon Recreational Park in Montville on Tuesday April 5. Tickets www.picnicforparkys2022.eventbrite.com.au

April 8-10: Queensland Under 13, Under 15 and Youth (Under 17) State Championships at Sunshine Coast Weightlifting Club at Crusher Park, in Crusher Park Drive, Nambour.



From left, Community Centre Manager Rachael Donovan and Community Development Worker Peter Hogg with Akshara Day and volunteers from Amrita Australia who were on kitchen duty last Thursday.

Help floods in with food for all, following deluge

AFTER the recent heavy rain and flooding, some members of the community have been hit harder than others. Staff and volunteers at the Nambour Community Centre are seeing this devastation first hand.

"We are appealing for all the help we can get to assist some of those worst affected by the rain," said Community Development Worker, Peter Hogg.

"The population of already vulnerable people in town have been hit hardest. Some, who have been living in tents or on the streets, have had all of their possessions washed away. We have had people come to us with nothing but the clothes on their backs.

"As well, we have people who have not been able to get to work because of the flood waters, and families who have come onto our radar because of the hardships of the past couple of years," he said.

Nambour Community Centre regularly provides food relief to those in need in the community. "We come once a month and cook as much as we possibly can to feed whoever comes in on the day," said National Coordinator for Amrita Australia Akshara Day whose volunteers were on kitchen duty this week.

"We made a total of 155 meals today for anyone in need. Plus they can take home meals to stock their fridges for as long as they need.

"During Covid we have been serving the meals in containers so people come in each day and they can take home meals they may require along with donated clothes, toiletries and fresh veggies."

Community Development Worker Peter Hogg said members of the local Thai community also take on the meal preparation responsibilities once a month while Nambour Community Centre's own volunteers work in the kitchen on the other weeks of the month.

"Every Thursday there are meals for people who need them," said Peter. "Almost everything is donated from local businesses like Fruity Life, Oz Harvest, Woolworths, Suncoast Care and Spiceland.

"It's amazing what this community does every day. Everyone contributes goods or time to just make things happen. We can have 50-80 people in here having meals on the busy Thursdays."

"Right now, the best way people can help is with donations of supermarket or department store gift cards to enable recipients to buy groceries, fuel and clothing," Peter said. "We find that we always have plenty of donations of women's clothing but not much in the way of men's clothing. At this time, items such as towels will also be very welcome."

► Contact the Nambour Community Centre on 5441 4724 to find out how you can help.

Scottish Country Dancers kick up their heels

THE Maleny Scottish Country Dance group has re-commenced for the year, in the RSL Hall Maleny, on Monday nights from 7 to 9pm. This form of dance is similar to Bush dancing and is performed in sets, so no need to bring a partner.

It is beneficial physically and mentally and is a great way to meet new people. Our motto is Fun, Fitness and Fellowship.

A free 'Come and Try' night will be held in the hall on Monday March 14.

► There is no need to dress up, just comfortable clothes, soft shoes, water bottle and hand sanitizer. Call Linda 0429 654 033 or Helen 0432 251 606.

Commemorative coin celebrates 100 years of CWA

THE Perth Mint has released a \$1 commemorative coin to celebrate the Centenary of the Country Women's Association in New South Wales and Queensland and acknowledge 100 years of service and advocacy for country women and their families.

The QCWA continues to provide a space for Queensland women to connect, collaborate, and impact communities. The state currently has more than 200 branches and over 3500 members.

► To see the coin, visit www.eshop.ramint.gov.au/newproducts. For more information, contact Christine King on 0407 124 637



Riley Lee is coming to St George's Anglican Church, Walker Drive, Maleny, March 20 at 2pm.

Japanese flute master to revisit his Maleny connections

RILEY Lee became the first non-Japanese master of the Shakuhachi flute in the world, but he was a Maleny resident in 1987 when the town hosted the first Maleny Folk Festival.

This festival was the origin of the internationally regarded Woodford Folk Festival and Riley has performed at both festivals.

Riley is returning to Maleny to present a concert at St George's Anglican Church Walker Drive, March 20 at 2pm.

Priest in charge Reverend Deborah Bird is delighted at the choice for the first concert for 2022. "The concert series St Georges-in-the-Hills has been a successful niche event for some years now, with a few challenges during the pandemic," she said. "I am committed to continuing the series, and we start the 2022 season with an iconic instrument played, literally, by a master. I am delighted to welcome Riley Lee with his concert, appropriately titled 'Breathing Space', to our church venue."

The Shakuhachi is a Japanese bamboo woodwind originally derived from the Chinese 13 centuries ago, and only a 'master' can play it with real authority. Following his induction as a Grand Master of the instrument in 1980, Riley has performed across the world notably with the Boston Symphony Orchestra, the Berlind Theatre Princeton, as well as in Australia with the Melbourne and Sydney Symphony Orchestras.

'Breathing Space' will include traditional shakuhachi traditional shakuhachi pieces, as well as Riley Lee's original compositions, and works by Hildegard von Bingen, the 12th century Benedictine abbess whose beautiful plain-song melodies are having somewhat of a current resurgence.

► This concert is already receiving a great deal of attention from music lovers, so the St Georges concert committee urge you to book as soon as possible. Because of the limited space in the church and hall, it is essential you book, either at www.trybooking.com or by phoning Susan Myring on 07 5494 3062, where you will have payment choices. Tickets are \$25. Refreshments will be available for purchase on entry, and you will be able to buy Riley Lee CDs.

ST. PATRICK'S DAY

IRISH LONG WEEKEND

17 - 20 MARCH

Continue the celebration and stay a little longer at Clouds Montville

2 Course Irish Fare Lunch \$35

Includes Pot of Barrel Signature 'Dark Clouds Milk Stout'

ALL DAY CASUAL DINING | TAKE AWAY | FUNCTIONS | WINE FLIGHTS | BEER PADDLES | GRAZING PLATTER | KIDS PLAY AREA

07 5429 6361 | 787 Landsborough-Maleny Road | www.cloudsretreats.com.au | OPEN DAILY 8am - 4pm



The cast of *A Girl's Guide to World War*.

A Girl's Guide to World War coming to Maleny

THE locally-devised, award-winning musical 'A Girl's Guide to World War' has recently been remounted for a three-week season at the Brisbane Powerhouse.

After sell-out performances, rave reviews and standing ovations, the show will make a triumphant return to its home base in Maleny for two shows only on 18 and 19 March.

"Many were disappointed when they missed out on the seeing the show when it was last in Maleny," said Maleny Arts Council President Peter Lavery. "And I know there will be many who want to see it again! Don't miss out on tickets for these performances and make sure you tell all your friends."

The show will be staged at Maleny Community Centre on Friday 18 March at 7pm and Saturday 19 March at 2pm. Tickets: Adults \$48 & MAC Members/Students \$42 (a small booking fee applies) www.malenyartscouncil.com.

Kenilworth community can resume normal water use

UNITYWATER is advising Kenilworth residents they can resume normal water use.

The Kenilworth Water Treatment Plant (WTP) is operating again after extreme wet weather and heavy rain inundation caused it to go offline.

When the plant is offline, water is carted to local reservoirs to continue supplying water to this community. Water carting has now ceased.

"The efforts of the community helped preserve the water supply while we worked with Seqwater to get water carted to our reservoirs and the water treatment plant back online," a spokesperson said.



Caption: Proposed improvements and locations Three locations have been identified for pedestrian improvements including: 1. an upgrade to the existing informal crossing point near the Post Office (costing 7 car parks); 2. an upgrade to the existing crossing point near Rick's Garage (costing one car park); 3. a new crossing point near Palmwoods Bakery (costing 6 car parks).

TMR to release revised traffic calming plan for Palmwoods

Business concerns raised as proposals cost parking spaces

THE Department of Transport and Main Roads is finalising a revised concept design aimed at calming heavy traffic and parking concerns in Palmwoods.

TMR's plans will be released to the community for further comment in the coming month. This follows concerns raised about the initial proposal which would have seen 14 valuable carparks lost to a main street that only has 50 marked spaces.

A Transport and Main Roads spokesperson said the department considered community input on the initial proposal which identified three potential locations for pedestrian improvements in Palmwoods.

"The proposal included traffic calming devices, upgrades to existing crossing points near the Post Office and Rick's Garage, along with a new crossing point near the Palmwoods Bakery. As part of this proposal, a number of car parks were identified for removal at each location in order to achieve clear sight lines and ensure the safety of all road users.

"More than 270 people provided feedback as part of this initial consultation, which provided greater local knowledge and understanding of the community's preferences and key issues.

"In particular, we acknowledge the community's concerns about impacts to car parking and the current limited availability of car parking in general in Palmwoods, which featured heavily in the feedback received.

"In response, we are closely reviewing the parking arrangement on Margaret Street and investigating opportunities to improve car parking capacity and convenience for locals and visitors, while also ensuring safety for pedestrians and other road users."

A revised concept design is currently being finalised and will be released to the community for further comment this month (March).

"Late last month (February), the Australian and Queensland governments announced funding for 46 road safety projects across the state, including \$1 million towards improved safety in Palmwoods."



Palmwoods cleans up

THE Palmwoods community banded together for a timely Clean-Up Palmwoods event on Sunday (March 6) starting from the Palmwoods Soccer Club. Dozens of people pitched in to lend a hand in five local areas: Old Orchard Estate; Palmwoods Town Centre; Federation Park; Duck Pond; and Old Palmwoods. The event was run by Palmwoods Business & Community Association, Martinuzzi Property Group and the Palmwoods Warriors Soccer Club.

NAMBOUR NEWS & CASKET



WE FIX MOBILE PHONES

- Stationery
- Magazines
- Lotto & Instant Scratch Tickets
- Newspapers
- Gifts

We can home deliver your newspapers and magazines and we are also agents for Cartridge World.

Shop 28, 52-54 Currie St, Nambour
P: 5441 2029 | @NambourNews

Woombye Library has been serving community since 1898

THE library opened in 1898 when the original hall was built. Mrs Charlotte Kuskopf set about creating a Library. In those days, books were sent by train from the Brisbane School of Arts Library on loan. In 1904, 50 volumes were added to the library and there were 58 subscribers: by then the library had acquired 110 books.

When the new hall was built in 1909 a room was made available for the library. This room is the site of the present library - thus giving a sense of continuity since 1909

Mrs. Kuskopf continued for many years to provide reading matter for Woombye and was considered the literary "Watchdog" -

She had selected townsfolk who acted as censors, reading all books before they were allowed to go on the shelves. She would scrutinise every book in the young borrower's section to make

sure they were suitable for one of such tender years to borrow.

In later years she was to burn the book "Peytone Place" as she considered it not suitable for her borrowers.

By 1917, to add variety, the library commenced to exchange books with Montville and later with Kenilworth. This rotation continued until 1992.

The library remained open as such until 1971 when it ceased to loan out books but was manned and open as a reading room. A community meeting held in November 1984, was strongly supported and passed a resolution that the library should be re-opened as an extension service with books being supplied by Nambour Library.

In 1986, the Children's library was established in the east wing, a room formerly used by a bank. In 1989, the Woombye Community

Library became an independent entity by becoming Incorporated. Although the financial situation was not healthy, the library survived until the Maroochy Shire Council came to the rescue with an annual grant. Today, the library boasts over 1500 readers with 30 volunteers loaning about 350 books a month.

We are proudly supported by Sunshine Coast Regional Council and Bendigo Bank, and with grants from various other funding bodies including Sundale and Gaming Committee.

A huge reminder to all Borrowers, that books borrowed from our Library need to be returned to the Woombye Library. On occasions our books have been returned to other libraries and it can be a challenge to get them returned.


The Library will be closed on Monday 21st March for a stocktake.

LET'S GET READY TO RUMMAGE

BRING YOUR

- SUITCASE
- PICNIC RUG
- HAT & SUNSCREEN

LIVE DJ MUSIC

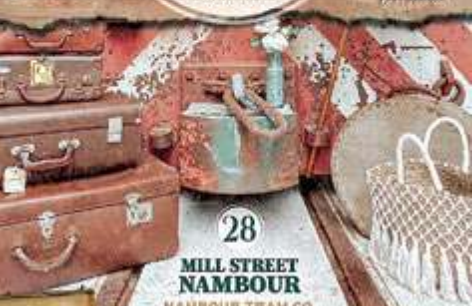


ALL THINGS VINTAGE & HANDMADE

27TH MARCH

10AM - 2PM

Join in the FUN \$5



28

MILL STREET NAMBOUR

NAMBOUR TRAM CO

BOOKINGS FOR YOUR SUITCASE SPOT ARE ESSENTIAL VIA DIRECT MESSAGE TO NAMBOUR TRAM CO ON FACEBOOK

HAPPY HEALTHY SMILES

\$199*

welcome offer

*New patients only. T&Cs available online. Valid to 30.03.22.





Blackall Terrace Dental

NAMBOUR

New patient welcome offer

TOTAL COST: \$199*

Call to book or go online

(07) 5441 3583

blackallterrace dental.com.au

- Comprehensive exam
- Oral cancer screening
- Intraoral photography
- All necessary x-rays
- Scaling & polishing
- Topical fluoride
- Treatment planning



Scan to book your next visit.






Freeze & Heat Meals

Delivered to your doorstep every Friday!



SPECIALS

AVAILABLE UNTIL 28.04.22

21. Greek lemon chicken

In fresh herb & white wine broth served with braised vegetables & rice



22. Lamb moussaka

Baked lamb lasagne layered with rich tomato meat sauce & layered with eggplant, potato & zucchini with white béchamel & parmesan



Single Serve **Double Serve**
\$9.90 \$18.00

GF = Gluten free | DF = Dairy free | VEG = Vegetarian

MAIN MEALS

	Single Serve	Double Serve
1. Marinated seed mustard & rosemary roast beef - GF DF Served with roasted vegetables & gravy	\$9.90	\$18.00
2. Crispy skinned lemon & herb roast chicken - GF DF Served with roasted vegetables & gravy	\$9.90	\$18.00
3. Tender roast pork loin - GF DF Served with apples, roasted vegetables & gravy	\$9.90	\$18.00
4. Beef lasagne Lean beef bolognese layered with bechamel, pasta & cheese	\$9.90	\$18.00
5. Oven baked beef rissoles & gravy - GF DF Served with buttered potatoes & seasonal vegetables	\$9.90	\$18.00
6. Braised steak & mushrooms in gravy - GF DF Served with herb butter potatoes & seasonal vegetables	\$9.90	\$18.00
7. Corned beef sauteed onion & fresh herb white sauce - GF Served with steamed vegetables	\$9.90	\$18.00
8. Savoury mince - GF DF Lean beef gravy served with buttered herb potatoes & steamed vegetables	\$9.90	\$18.00
9. Sticky teriyaki pork & asian greens - DF Served with rice	\$9.90	\$18.00
10. Cottage pie - GF DF Lean beef & vegetables sauteed in gravy & baked with creamy mash potato & seasonal vegetables	\$9.90	\$18.00
11. Malaysian satay chicken - GF DF Mild creamy curry served with rice	\$9.90	\$18.00
12. Braised pork, Italian sausage & butter bean stew - DF Mild, served with couscous	\$9.90	\$18.00
13. Stirfried chicken & hokkien noodles - DF Stir fried in asian sauce with peanuts	\$9.90	\$18.00
14. Creamy coconut Indian veggie & chickpea curry - GF DF VEG Mild, served with rice	\$9.90	\$18.00
15. Vegetable lasagne - VEG Seasonal vegetable in napolitana sauce with bechamel, baked with cheese	\$9.90	\$18.00
16. Spinach & ricotta cannelloni pasta - VEG With napolitana sauce, baked with cheese	\$9.90	\$18.00
17. Pork & beef italian style meatballs With red wine, tomato & herb fettuccine, topped with parmesan	\$9.90	\$18.00

SOUPS

	Single Serve (Large Portion Size)
18. Asian chicken sesame vegetable noodle soup - GF DF Tender chicken pieces sautéed with seasonal Asian vegetable slow cooked in chicken broth with sesame and vermicelli noodles	\$6.90
19. Hearty pea & ham soup - GF DF A thick soup of braised ham slow cooked split peas, sautéed vegetables & fresh herbs	\$6.90
20. Cream of roasted sweet pumpkin soup - GF DF A wholesome soup of roasted sweet pumpkin, sweet potato, sautéed onion, celery & carrot & coconut cream	\$6.90

HOW TO ORDER?

Call 07 5445 7044 OR order online via the link below:

<https://www.rangecare.com.au/freeze-and-heat-meals>



Minimum order of 5 meals applies. Customers over the age of 65 and NDIS participants are eligible for Free Delivery.

Proof of eligibility may be requested by the RangeCare staff. All other orders will be subject to a \$15 delivery fee.

RE/MAX wins national and international agency awards

JUST one year after taking over the agency RE/MAX Nambour Property Sales' owner Tristan Brown has an extra skip in his step after his growing team took home five gongs at the franchise's national awards night recently.

On top of that, the local office also won a major international award, taking out the RE/MAX 2021 "No. 1 Largest Global Net Gain in Sales Associates".

"Our office is incredibly proud because this year for the first time in the history of RE/MAX Property Sales we had two agents achieve the Chairman's award. Well done to Jason Stock and Toby Morrin. Meanwhile, Richard Krausz, Steve G Pery & I achieved the Platinum Award and Steve Perry achieved the Gold Award. Our office also won the number one office in Australia for recruiting.

"We love what we do and we couldn't have done this without the support and trust of all of our wonderful clients."

The national awards were held February 24 at RACV Royal Pines Resort, Gold Coast.

RE/MAX Australia Managing Director Joel Davoren said recruiting was a crucial consideration for any real estate business trying to lead the market.

"We recognise recruiting efforts with two awards and Nambour won both! One is based on the number of agents recruited to the team and the other on percentage growth in the sales team."

Mr Brown grew his award-winning and

record-breaking team from eight to 19 employees in just his first year of RE/MAX Property Sales ownership.

"Our reputation brings us our business, so it is critical to have the best team of agents to meet our customers' real estate needs," he said.

Mr Brown expects to keep a close eye on RE/MAX Property Sales' customer-agent ratio through 2022.

"Expectations and needs change, and we've certainly been made aware of that in the past couple of years," he said.

"Providing our customers with an exceptional level of service is a priority, as is providing our agents with the best of ongoing training and mentoring opportunities."

Mr Davoren said property prices soared and records tumbled in 2021 in metropolitan and regional markets across the country.

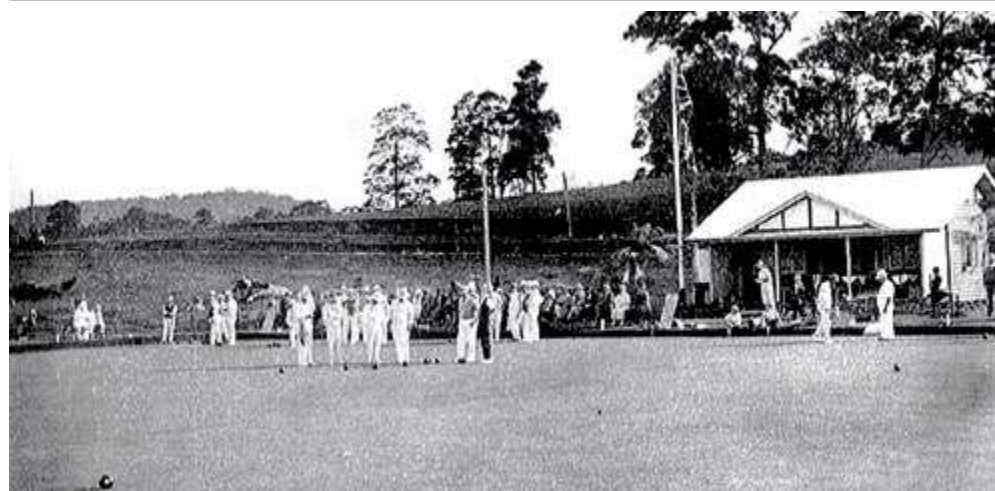
"However, despite a furiously paced real estate scene, it is the agents who are fully focused on forming genuine relationships with their customers that achieve greatest business success."

About RE/MAX:

From a single office that opened in 1973 in Denver, Colorado, RE/MAX has grown into a global real estate network with over 140,000 agents in more than 115 countries and territories. Its entrepreneurial culture affords its agents and franchisees the flexibility to operate their businesses with great independence.



From left, national award winners ... Steve G Pery, Jason Stock, Tristan Brown, Richard Krausz and Toby Morrin.



Nambour Bowling Club in 1933 featuring its small bowling green and first clubhouse with the Showground entrance in the background.

Nambour Bowls Club celebrates 90th year

NAMBOUR Bowls Club celebrates its 90th anniversary this year and is planning a number of events. Members, past and present, along with the wider community have an opportunity to share and reflect on this amazing achievement.

Once the decision to form a bowling club was made in August 1932, the wheels of motion moved swiftly under the direction of several prominent Nambour businessmen.

Within 12 months the town welcomed its new sporting and community facility complete with a small bowling green and clubhouse.

The Club played a significant role in the promotion and development of the sport on the Sunshine Coast having joined Maroochydore, Mapleton and Palmwoods as the only lawn

bowls clubs in the North Coast region during those early pioneering days.

• Share in the history

The Nambour Bowls Club would like to hear from anyone with an historical connection or collection which they would like to share during the year of celebrations.

"Photographs, memorabilia and stories would be most welcome," said Club Chairman Graham Morton. "The game may have changed considerably over the years but personal and family experiences will surely add that special touch."

► Enquiries and information may be directed in the first instance to the Club via email : nambourbowls@gmail.com.

SACRED Body

INITIATE TRUE WELL-BEING

Relax Re-Connect Rejuvenate

0419 175 425 | sacredbody.com.au | f @

8 LITTLE MAIN ST PALMWOODS

Massage
Far Infrared Sauna
Waxing
Lash & Brow Tinting
Chakrapuncture

A *KIND* word or action can change everyone's day for the better.

DOWNLOAD YOUR FREE KINDNESS RESOURCES HERE

sunshinecoast.qld.gov.au/kindness
07 5475 7272

KIND IS COOL. BE COOL.

Sunshine Coast COUNCIL
Our region. Healthy. Smart. Creative.



Our region.
**Healthy.
Smart.
Creative.**

Help Council create a new planning scheme

Growing sustainably and preserving the things we love about the Sunshine Coast will take careful planning. Council is preparing a new planning scheme and you can help shape the future of our region and your local area by visiting Council's website to have your say by 31 March.

You gotta be cool to be kind!

A kind word or action can change everyone's day for the better. That's why local businesses, Council and Sunshine Coast Hospital and Health Service have joined forces, launching a new campaign promoting kindness. It's Cool to be Kind is designed to support local businesses and industry in the third year of the COVID-19 pandemic. Download your free resources, such as video, posters and social media images, from Council's website now.

Join in Ride2School Day

Ride, scoot or skate to school on Friday 25 March for national Ride2School Day for your chance to win one of four bike shop vouchers valued at \$500 (conditions apply). For more details and to register, head to Council's website.

CUSTOMER CONTACT

sunshinecoast.qld.gov.au/Council/Contact-Council

Calling all budding high school innovators

The Mayor's Telstra Innovation Awards are back again in 2022, with entries now open for high school students in Years 9 to 12 from across the Sunshine Coast region. The awards support students to develop business ideas that use innovation or technology in a new way to solve a community, environmental or business challenge and connect with industry mentors. Applications close 27 April. Visit studysunshinecoast.com.au/innovationawards for more details and to apply.

One for the calendar

Next Council Ordinary Meeting - Thursday 24 March at 9am

What will 2070 look like?

Don't miss the latest exhibition on now at Caloundra Regional Gallery until 20 March. Dystopia/Utopia 2070 explores what the future may look like 50 years from now. You'll find a diverse body of work along with extensive augmented reality, providing a deeper insight into each piece. Entry to the gallery is free and it's open Tuesday to Sunday from 10am. For more information, visit Council's gallery website.

'Everyone belongs' on the Coast

Celebrate our vibrant and diverse region with Harmony Week in 2022 beginning 15 March. The festivities will showcase a colourful array of food, dance, culture, sport and more! For more information, search 'Harmony Week' on Council's website.

Does your community group need funding to help make something great happen?

Make it a reality with support from Council's Community Grants Program. Minor Grants of up to \$2000 are available for community groups to deliver projects, events and activities that provide community benefit. Visit Council's website to apply.

Volunteers needed for BushCare

What's BushCare? It's a group of likeminded people who care for the bushland near them, enjoy the outdoors and have the flexibility to volunteer when it suits them! To join your local BushCare working bee, register your interest on Council's website.

07 5475 7272
mail@sunshinecoast.qld.gov.au



www.sunshinecoast.qld.gov.au



Warriors unveil Sundale Community Foundation donated training jerseys designed by Evangeline Walton, centre.

Warriors' new look is all thanks to Sundale Community Foundation and Evangeline

SUNDALE Community Foundation (SCF) visited Palmwoods Warriors Football club on Saturday 5 March to celebrate a community grant awarded to the club of \$4185.

Sundale Community Foundation Board Member Wayne Greenham said the Warriors were one of 12 projects funded last year, with the 2022 grants round opening on 1 June.

"SCF has funded more than \$200,000 in cash grants to 49 eligible recipients across Nambour and its surrounding areas."

Palmwoods Warriors Football Club President Tarryn Powell said the club was thrilled to unveil the new training jerseys.

"Jerseys provide not only a visual identity but unity for players, and we invited Evangeline Walton, a former member and local Indigenous budding artist to design the jerseys as we wanted acknowledge our past and move forward as we celebrate 30 years as Palmwoods Warriors this year."

Evangeline says, "The design was inspired by Paynter's Creek, which runs alongside the fields because it helps cool players after games. We thanked Eva and Wayne Greenham from Sundale Community Foundation at today's event."



Tarryn Powell, right, presents Evangeline with a gift for her work designing the jerseys.

We encourage the community to come on down one Saturday to enjoy a game, and let your kids know what a club we are, we make an awesome coffee and steak burger too.

Thank you Sundale Community Foundation for supporting our players, and the football spirit.

► To check eligibility criteria for community grants for 2022 grant visit: sundalecommunityfoundation.org.au



The Maleny and District Men's Shed has over 50 members and meets Tuesdays and Fridays from 8am to midday.

Men's Shed sparks creative endeavours

A rising number of retirees in the region has seen increasing demand for the important benefits that the Men's Shed movement provides.

These benefits include creating opportunities to learn new skills, building a social network and passing time meaningfully in the company of mates, according to Maleny and District Men's Shed Secretary Lindsay Hay.

"Men's Sheds provide a collegiate network of support, advice, and fellowship for men of all ages around their mental and physical health, aspects of wellbeing that men are sometimes reluctant to address," he said.

The Maleny and District Men's Shed, which celebrated its tenth anniversary in 2021 and has over 50 members, will soon commence construction of a second facility, a shed donated by the Australian Defence Force and previously used in Vietnam, and an extension to their parking lot to include disabled parking.

"This new resource will allow the expansion of the Men's Shed services into alternative clean activities such as leatherwork, lead lighting, cards, computers etc, as well as a breakout space for meals and information sessions," Mr

Hay said.

"These cannot be practically conducted in the current shed which is dedicated to wood and metal work. Moreover, the existing shed has reached effective capacity."

The Maleny Mens Shed operates on Tuesdays and Fridays from 8am to midday.

Men of all ages, backgrounds and interests are welcome. Activities include woodworking, metalworking and blacksmithing. One of the popular activities is the making of "Condamine cow bells" which was introduced by the late member, Kevin Howell. Maleny Mens Shed is a place for Maleny men to get together, enjoy some hands-on activities, make new friends and talk about "men's business".

You don't need any actual skills to join the Maleny Mens Shed, other than a need to have a guilt-free social activity in the company of other similar minded male persons.

• For more information contact with Maleny Mens Shed can be made by phone on 0491 710506 or by email at: malenymensshed@hotmail.com. View their Facebook page @malenymensshed



VB Real Estate

FREE Marketing and no upfront costs to put your home on the market FOR SALE, so nothing to pay until the property is SOLD.

Call us today as they are selling as quickly as we list, we have several qualified buyers, waiting to purchase a home on the Sunshine Coast & Hinterland.

www.vbrealstate.com.au

Vanessa & Cheyne Brunton



UNDER CONTRACT **YANDINA**
\$870,000 4 Bed, 2 Bath, 2 Car



UNDER CONTRACT **KUREELPA**
\$1.4 million LAND 30 Acres



FOR SALE **NAMBOUR**
\$550,000 LAND 1535m²



SOLD **GYMPIE**
\$420,000 Tenant in place until 2023



FOR SALE **MAPLETON**
Contact Agent 42 Acres opposite Mapleton National Park



JUST LISTED
FOR SALE **TEWANTIN**
O/O \$320,000 UNIT 1 Bed



FOR SALE **REESVILLE**
O/O \$4 million 49 Acres

ENQUIRE FOR MORE AVAILABLE LISTINGS



UNDER CONTRACT **NAMBOUR**
UNITS 84, 53, 60 & 7

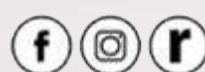


SOLD **DIDDILLIBAH**
\$775,000 LAND 1 Acre



Vanessa & Cheyne Brunton

0467 448 850



vanessa@vbrealstate.com.au • www.vbrealstate.com.au



Privacy, post war charm and absolute elegance!

AGENT'S CHOICE: 37
Oxleigh Crescent, Nambour

THIS gracious circa 1947 family home on a glorious 1053m² parcel of land is brimming with the charm and elegance of the post-war era.

It features established gardens and spacious living in a quiet neighbourhood. The home is opposite a park and playground and a short walk to Nambour State College and town.

Highset and tucked away from the street in an elevated position four bedrooms, two bathrooms home has separate living areas, a large modern eat-in central kitchen, expansive north-facing deck overlooking inground pool and gardens, separate laundry, carport plus single lock up garage and masses of storage/workshop space underneath.

Other features include: hardwood timber flooring, high ceilings with decorative cornices, stone benches in kitchen, stainless steel appliances, induction cooktop, split system air-conditioning in lounge and master bedroom, ceiling fans, and 5,000-litre rainwater tank – are all existing features of note.

"Properties of this vintage are timelessly appealing and increasingly sought-after," said



agent Tristan Brown. "They have a dignity and class that cannot be replicated in newer homes and many buyers are now actively seeking residences of this era. They are generally tightly held and only come onto the market every so often."

The address is on the northern side of town with quick and easy access to the Bruce Highway and the coast.

Long-term owners have taken great care of their beloved home, and it shows ... many cherished memories have been made here over the years, and the best is yet to come!

► Contact Tristan Brown 0403 665 643 or John Tobin 0478 664 546 of REMAX Nambour to inspect this beautiful home.

Custom home offers privacy and ocean glimpses from Nambour Heights

AGENT'S CHOICE:
63 Lachlan Avenue Nambour

THIS custom-designed home offers glorious north-easterly views including ocean glimpses from its elevated position.

The quality-built contemporary residence sits on a half-acre landscaped block, high in the hills of Nambour Heights. It is surrounded by premium homes within walking distance to local parks/playgrounds, schools and shops.

Across two level the home has four bedrooms, three bathrooms, an office, separate living areas, galley kitchen with walk-in pantry, separate laundry, storeroom, wine cellar, workshop area and covered parking for five vehicles, plus abundant off-street visitor parking.

The Hebel rendered exterior offers comfortable all-season living – cool in summer and warm in winter; other features include ducted vacuum, ceiling fans, split system air-conditioning in media room, stone benches in kitchen, Miele dishwasher, gas cooktop, security screens, external access to patio from all bedrooms, home speaker system, dual vanities in ensuite, heated towel rails, separate bath and shower in main bathroom, generous storage, and 4kW solar power.

Meticulously cared for and maintained by current owners, there is no immediate money needing to be spent, and despite its substantial size, it is actually a very low maintenance home inside and out.

The gardens are well established with retaining walls, walkways, flat expansive grassy area (room for a pool), and there's even a rare Wollemi Pine onsite; like the house, the gardens are also very private, and there's a



fabulous space for an open air firepit too.

"The home has a delightful outlook across town to the coast, as well as cooling breezes and abundant natural light. This is a cleverly designed home maximising privacy, vista, and aspect," said selling agent Richard Krausz.

"This is an outstanding home in every sense; impressive in scale, impeccably presented, and built to last."

► Contact Richard Krausz 0422 997 810 or Megan Manly 0421 040 807 from Remax Nambour to find out more.

Locals Support Local

Richard Krausz continues to step up for the Nambour community in times of need.



For the past 6 months, **REMAX Property Sales' Richard Krausz** and his team have donated \$300 from every sale to the **Nambour Community Centre**; raising \$4,600 so far.

"The recent SEQ floods have had a devastating impact on the Nambour community and the NCC needs our support now more than ever," assured Richard.

"The NCC provides a way forward for the most socially, culturally and economically disadvantaged and discriminated groups in our community, and I'm proud to take part in assuring the NCC are able to continue their mission in this challenging time."

Sell with **Team Krausz** and be a part of raising much needed funds for your community. Contact **Richard** on **0422 997 810** to book an appraisal today.

RE/MAX Property Sales

Scan the QR code to connect with Team Krausz



Richard Krausz 0422 997 810

Invest in Tewantin. Offers over \$320,000 invited for unit in over 50s complex



AGENT'S CHOICE:
160/139 Moorindil Street, Tewantin

THIS comfortable one-bedroom unit has a lovely elderly tenant who enjoys the ease and convenience of living in a single level home in an over 50s community on a periodic lease. The unit is located in a very desirable location within the complex. It is a short stroll to the community centre whose facilities include a heated pool, billiard room, shop, hairdresser, library and bowling green.

The Noosa River is just a short stroll down the road, there is a bus service from the front gate and Tewantin Village is also close.

Fully modernised, the property has freshly painted walls, new floor coverings and window furnishings.

The spacious bathroom is tiled throughout and boasts a large walk-in shower recess, and modern vanity and toilet, with grab rails installed. A lovely front patio area has a northerly aspect and is a great spot to relax. For those who still drive, there is also a single carport belonging to this unit.

This property has low Body Corporate fees and is part of a freehold unit complex with no exit fees. It is a popular choice for the investor, as it is consistently income-producing and in demand. Many units have been purchased to secure a position for future living on the Sunshine Coast.

► Call Vanessa Brunton 0467 448 850 from VB Real Estate today to secure, or email vanessa@vbrealestate.com.au for further information.

The largest real estate team in your local area!



RE/MAX Property Sales & Rentals

5470 7000 | 50 Lowe St, Nambour
remaxpropertysalesandrentals
www.remaxpropertysales.com.au

Welcome to RE/MAX Jack and Nathan!

RE/MAX Property Sales are thrilled to welcome Nathan Beasley and Jack Payton to the ever-growing team.

Experienced sales agent, Nathan, supported by his right hand man, Jack, will be helping property owners on the **Sunshine Coast** and **Noosa Hinterland** achieve their 2022 real estate goals.

Thinking of selling? Contact **Nathan and Jack** on **0427 612 550** for an updated appraisal on your property today.



RE/MAX Property Sales

Scan the QR code to connect with our team



remaxpropertysalesandrentals | 5470 7000 | www.remaxpropertysales.com.au

Look Local Trades & Professional Services

Landscaping Services

MANSON LANDSCAPE DESIGN & CONSTRUCTION

- Need help with a landscape plan for your property?
- Need help with a planting plan for your garden?
- New business offers discounted rates for garden design.
- Free quotes for landscape construction.

Call or email James for a free site visit and quote

Phone 0425 222 967
james@mansonlandscape.design
mansonlandscape.design

WOODCHIP / FOREST MULCH

\$22 per cubic metre + GST
(8 cubic metres minimum delivery)

54 459921 or 0412 586 131

We also provide complete tree services including pruning, removals & consultancy



Professional Services

innov8 ACCOUNTING & ADVISORY

- Accounting
- Business Advisory Services
- Tax Return Preparation
- Company, Trust, Partnership, Individual
- Self-managed Super Funds



5442 1234

info@innovateaa.com.au

4 Pinegrove Rd
Woombye

www.innovateaa.com.au

Auto Services

AUTOELECTRICS QLD & Mechanical

- Air Conditioning
- Mechanical Repairs
- Auto Electrics
- Log Book Servicing

227 Nambour Connection Rd, Woombye

autoelectricssld.com.au

5442 2278

Home

Servicing The Sunshine Coast For Over 30 Years

INDEPENDENT BLINDS & AWNINGS

0411 872 060

Ziptrak & Zipscreen • Blinds & Awnings
Clear PVC Blinds • Plantation Shutters
Security Doors & Screens

Call us today for a free measure and quote!

www.independentblindsandawnings.com.au

QBCC No. 1096933

Cleaning/Pest Control

Sutton's CLEANING SERVICE

- SEPTIC SYSTEM *Locally Owned*
- TREATMENT PLANTS *& Operated Since 1980*
- GREASE TRAPS
- HYDRO EXCAVATION
- LIQUID WASTE
- COMMERCIAL & DOMESTIC

PH 5447 6477

www.suttonscleaning.com.au

CONCRETING & LANDSCAPING ALL AREAS

- Footpaths • Driveways • Slabs
- Stencil • Stamped
- Exposed Aggregate • Plain • Bobcat
- Excavator & Truck
- Quality work at affordable rates
- Free Quotes & Free Advice Anytime
- Credit Cards

Ph Guy 0416 202 044
www.concretecontrol.com.au

QBCC Lic no. 1129605

Electrician

ACW Electrical Pty Ltd

Small Job Specialist

Quality Workmanship on Domestic Installations & Repairs

40 Years Experience

M: 04 27 170235

Gas Services

GAS SERVICES QLD

NEED A NEW GAS CONNECTION

- Domestic • Commercial • Industrial
- New Installations • Repair Work
- Gas Emergencies

Mention this ad for 20% off the service & repair call out fee. Valid until Feb 2022.

CALL DREW 0404 657 047
info@gasservicesqld.com.au

QBCC: 15247354

www.gasservicesqld.com.au

Roofing

RE-GUTTER?

DOES YOUR HOUSE NEED GUTTERS REPLACED?

LOW SET AND HIGH SET
FREE QUOTES

PHONE 0417 721 630

JOBS UNDER \$3300

Auto Services

CARAVANS WE BUY, SELL AND CONSIGN

P: 0408 758 688

RANGE CARPET CARE

Citrus or Hypoallergenic Detergents Available

Nambour > Hinterland Coast

- Same owner operator - SINCE 1987
- Environmentally safe & clean solution
- Commercial & residential
- Help reduce levels of dust mites

WARNING Dirty carpets are a health hazard

BROLLY Fabric Protection
Ph 5445 7611

Gas Services

GAS SERVICES QLD

NEED A NEW GAS CONNECTION

- Domestic • Commercial • Industrial
- New Installations • Repair Work
- Gas Emergencies

Mention this ad for 20% off the service & repair call out fee. Valid until Feb 2022.

CALL DREW 0404 657 047
info@gasservicesqld.com.au

QBCC: 15247354
www.gasservicesqld.com.au

Roofing

RE-GUTTER?

DOES YOUR HOUSE NEED GUTTERS REPLACED?

LOW SET AND HIGH SET
FREE QUOTES

PHONE 0417 721 630

JOBS UNDER \$3300

WE ARE BACK!
Noosa Eumundi
Auto Wreckers

17 Whalley Creek Close,
Burnside

Call Ivan
5442 8866

STILL WANTED:
F Trucks and other cars
Ring for parts requirements
Open Mon to Fri 9am-1pm



Advertise in
Look Local
Trades & Services
& reach 20,000
local readers
a fortnight.
0400 069 711

Plumber

WOOMBYE PLUMBING
30 Years Experience
RURAL PLUMBING SPECIALIST

- RAINWATER TANKS & INSTALLATION
- DRAINAGE
- MAINTENANCE
- EXCAVATOR HIRE

ADAM KITHER
0418 712 268
adam@kitherplumbing.com

24 Menary Rd, Woombye QLD 4559

Water Services

HW WS SEPTIC PUMP OUTS

Hinterland Waste Water Services

Peter
0428 723 082
hwws@bigpond.com

HPS
Hinterland Pump Services
Glasshouse to Gympie
Murray
0416 256 536

GD WATER BORES

OBLIGATION FREE SITE INSPECTIONS FOR ALL SUNSHINE COAST RESIDENTS

Call 1300 0 DRILL
E water@geodrillaustralia.com.au
www.gdwaterbores.com.au

Look Local
Classifieds

Health & Wellbeing

HATHA YOGA/PILATES RELAXATION
Woombye Hall: Sat 9am & Wed 9.30am.
Beginners & Seniors welcome. Cost \$10. Christine:
5441 6285 (Cert. in Pilates matwork; Dip. IYTA: Yoga
Instructor; USC Sport & Exercise minor: Ex. Prescrip.
for Health & Rehab.)

Letters to the Editor

Do you have an opinion to share? A range of viewpoints leads to better debate and better outcomes. Submit your Letter to the Editor with your name and suburb to: editor@sunshinevalleygazette.com.au. Please understand there is a strict 300-words limit.

Toilet-less train was due to a fault on the network

IN reply to Jeffrey Addison (SVGazette, February 23, "Coast trains need solutions for ablutions") and Phillip Richards (SVGazette, February 23, "No loo on the long train trip to Brisbane"): Queensland Rail Acting Head of SEQ Neil Backer said:

Queensland Rail makes every endeavour to ensure all trains operating on the Sunshine Coast line have toilet amenities onboard for customers.

However, on rare occasions, this may not be possible due to unplanned disruptions on the network impacting rollingstock availability. To avoid cancelling a service, a train without a toilet may be used to convey customers.

In the last six months to 31 January 2022, only 0.53 per cent of all trains operating on the Sunshine Coast line did not have a toilet onboard.

If we are required to operate a service without a toilet onboard, a comfort stop at Caboolture station is arranged for customers.

Nature Watch



Where do birds go when it rains?

EVEN the birds had had enough of the recent deluge. Don McGlusky of Diddillibah captured these Noisy Miners sheltering among the Golden Cane palm fronds near his house. Can birds predict the weather? There is some evidence that birds respond to drops in pressure and therefore seek shelter before a storm hits. They also tend to avoid high trees during lightning storms to avoid being whipped around from the tops of trees. Send Nature Watch photos to editor@sunshinevalleygazette.com.au



'Three Herons'

IT is unusual for Herons to raise three chicks. However, here are three White-Faced Heron chicks, third day out of the nest, and perching on our side fence, waiting for lunch to arrive.

The parents already raised a pair this Summer. This is their second brood this season.

They nest in a large Eucalypt in Homestead Park, Coes Creek, (cnr of Coes Creek Road and Rod Smith Drive). Sunshine Coast Council has put in a lot of effort over the past five years with their arborist giving the tree a lot of attention. The Herons, Magpies, parrots and numerous honeyeaters are very grateful. Thanks to Chris Grealy for sharing this photo.

► Send your Nature Watch photos to editor@sunshinevalleygazette.com.au

On 11 October 2022, the 9.08am inbound service from Nambour station did not have a toilet facility due to a train fault on the network.

We apologise to customers for the inconvenience and appreciate the feedback. We'll continue to prioritise providing trains with toilet amenities on the Sunshine Coast line.

— Queensland Rail Media

Wild Rocket will be missed

WE wanted to acknowledge the void that has been left after the closure of the Wild Rocket in Montville. Peter and Belinda and their constant staff, Greg, Dom and Anna, have been wonderful hosts.

We, among others, have enjoyed their hospitality, their beer and their food since we have been on the Range. There is nothing which will replace them and we are in mourning. We just wanted to acknowledge their hard work and the pleasure it has been to get to know them. Thank you so much.

— Lesley and John Cowan, Flaxton

Standing with Ukraine

AUSTRALIA stands in solidarity with our friends and partners in supporting Ukraine and condemning Russia for its unprovoked and unjustified invasion - actions that are a gross violation of international law and the UN Charter.

As of this morning, it was estimated that over 2,000 civilians have already been killed, over 160,000 people have been displaced inside Ukraine and at least 870,000 people have fled to neighbouring countries.

In addition to humanitarian assistance and targeted sanctions, Prime Minister Morrison

has announced that Australia will provide around \$70 million in lethal military assistance to support Ukraine, including missiles and weapons.

It is important that we continue to toughen our sanctions on Russia to ensure Vladimir Putin and his cronies pay the high cost they deserve.

— Member for Fairfax, Ted O'Brien

Extreme weather unprecedented, but predictable

WHERE is the sense in claiming that extreme weather is a 1 in 100 year event? Does anyone really believe this? Certainly not insurance companies nor the residents of Grantham. According to the Bureau of Meteorology probability chart, Pomona has just experienced a 1 in 2000-year rainfall event. The only way to make sense of this is to pretend that humans haven't changed the climate by burning fossil fuels for the past 200 years.

While it's really heart-warming to see fellow Queenslanders pitching in to help those affected by the floods, I wonder for how long and how often we can keep mopping up the failures of our political leaders? The federal government continues to throw public money at new fossil fuel projects, like \$600m for the Kurri Kurri gas plant and fossil fuel subsidies in excess of \$10Bn per annum.

Unless we immediately begin cutting emissions, phase out coal and gas and transition to renewable energy, more intense and frequent weather events are inevitable: unprecedented perhaps but definitely not unforeseen.

— John Brinnand, Kiamba

Floods strip Petrie Creek vegetation

from Norm Morwood

THIS photo is of a small section of our BushCare site we call Florabunda Pocket along Petrie Creek that surrounds the Rugby Grounds at Woombye.

Recent floods had the water metres higher than seen in the photo of existing and native vegetation planted over the last 20 years.

The flood has stripped all the leaf and branch litter from the ground, but because of the natives, the ground has not been washed away.

The next opportunities to join us in these native animal habitat creation events will be at:

- Namba Creek (Model Railway Park Nambour) on Saturday 19 Mar 2022 starting at 7am
- Gulong Gung. Access from the carpark behind Repco off Howard Street Nambour on Wednesday 23 March starting at 7am

To join in the activities at these events you'll need to come in "long everything" bush protective clothing including boots/shoes and a hat.



Observing all current Covid protocols is also essential.

All tools required will be provided and we'll finish with a cuppa after a couple of hours of solid exercise and satisfying achievement in the outdoor air.

► For more info see the FB Page www.facebook.com/PetrieCreekCatchmentCare-GroupInc/ and www.sunshinecoast.qld.gov.au, "BushCare" or contact Norm Morwood 0409 63 99 44 or email normmorwood@gmail.com

Scream Jazz Orchestra plays Palmwoods Hall

COME along and enjoy the Big Band music at a concert featuring swing and Jazz 18-piece band "Scream Jazz Orchestra" & Guest Artist Robyn Brown at Palmwoods Community Hall on Sunday March 20 from 2pm. Admission is \$10 (cash only) per person at the door. BYO food and drinks and listen to great music from Glen Miller to The Beatles and beyond. Enquiries to screambigband@gmail.com or call 0421 013 095.

Join Maleny QCWA for Tea & Craft at Community Centre

JOIN us on the verandah at the Community Centre this Saturday (12 March) at 10am for our first Tea & Craft morning in 2022.

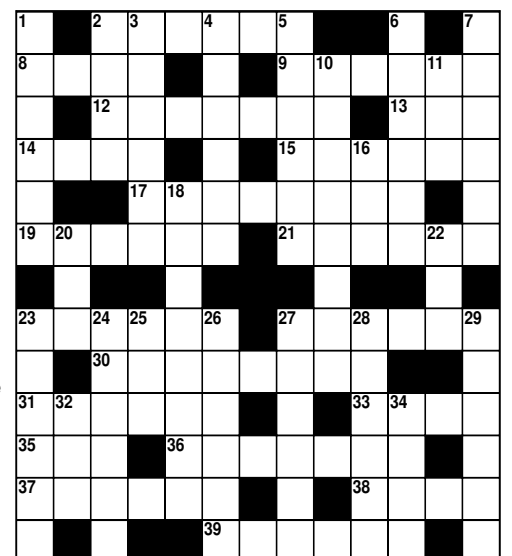
Have a cuppa, a chat, delicious CWA scones and learn to crochet or knit. OR if you already know how, bring along what you're currently making to share in the fun!

Enquiries: qcwa.maleny@gmail.com or 0400 923 923

Crossword

See solution next page

- | | |
|--------------------------------|----------------------------|
| ACROSS | DOWN |
| 2 Harry | 1 Assault |
| 8 Cast off | 2 Brave man |
| 9 Cat-like mammals | 3 Proverbs |
| 12 Works havoc upon | 4 Makes suitable |
| 13 Long-leaved lettuce | 5 Picturesque |
| 14 Astonished | 6 Withdraw from federation |
| 15 Devotional exercise | 7 Compositions |
| 17 Involved by necessity | 10 Segregated |
| 19 Letting contracts | 11 Weight |
| 21 Provides for | 16 Animal doctor (abb) |
| 23 Cavalry man | 18 Expressing denial |
| 27 Mock | 20 Flightless bird |
| 30 Permitted freedom of action | 22 Colour |
| 31 Impassive | 23 Silenced |
| 33 Labyrinth | 24 Inclines |
| 35 Part of the body | 25 Salt (chem) |
| 36 Caller | 26 Division of Yorkshire |
| 37 Cricket team | 27 Deceiving |
| 38 Incline | 28 Out-of-the-way |
| 39 Prevented from speaking | 29 Casts out |
| | 32 Sesame |
| | 34 Dry |



Nambour Forecourt Live! is Back

David Law
Division 10 Councillor
david.law@sunshinecoast.qld.gov.au



Come on down to the newly revamped forecourt in Nambour (in front of council's Eddie De Vere building on the corner of Currie and Bury Streets) for an afternoon of live music, multi-cultural dances, workshops and food trucks on Friday, March 18.

Council has teamed up with Peace Run Records to bring you another free family friendly event as part of Harmony Week. Bring the whole family down to Nambour Forecourt Live! from 4-8.30pm.

There will be face painting and weaving and craft workshops. Hayden Hack, Kaia Kingsley and Nizami will be performing on the night. Come and enjoy a wonderful event that showcases and celebrates our region.

Last year we opened the renovated space, making it a cooler, greener and more comfortable space for our community to use and host events like these.

Extended hours for Nambour Library

From March 14, the Nambour Library will be implementing extended hours of operation on weekdays, extending opening hours on Mondays, Wednesdays and Fridays from 5pm to 5.30pm and on Tuesdays and Thursdays from 5pm to 6pm.

Thank you

Thank you to all emergency workers, including those from Council, Queensland Fire and Emergency Services, Queensland Police Service, and SES for their incredible work during the regions weather events.

Please be patient as we work through all the repairs and clean up needed during the recovery phase.

Have Your Say

Have Your Say on council projects via the online community hub. Speaking up on council plans and projects helps to make decisions that benefit our whole community.

Providing your feedback and ideas helps to build strong and connected communities. Projects currently available for your input, include the new planning scheme project.

Disaster Relief funding available

Ted O'Brien
Federal Member for Fairfax
ted.obrien.mp@aph.gov.au



My heart goes out to the family and friends of local residents who have lost their lives due to the recent floods on the Sunshine Coast. Others have lost property and livestock and their pain is also felt.

To help support residents who have been impacted by the floods, the Morrison Government has announced a raft of grants and loans for individuals, businesses, community groups and sporting clubs. Payments for individuals include:

(1) Disaster Recovery Payment: A lump sum of \$1000 for eligible adults and \$400 per child.

(2) Disaster Recovery Allowance - Payment support at the JobSeeker or Youth Allowance rate for a maximum of 13 weeks.

Extraordinary Disaster Assistance grants are also available for impacted businesses, primary producers and not for profit groups and have been jointly funded by the Australian and State Governments. Payments include:

(1) Small Businesses: Recovery grants of up to \$50,000 are available for impacted businesses.

(2) Primary Producers: Grants of up to \$75,000 are available for producers affected by the floods.

(3) Not for Profit Groups: Grants of up to \$50,000 are available for affected non-profit organisations.

If you, or someone you know, has been impacted by the floods, support is available. You can find a comprehensive list of the available grants and loans for impacted residents on my website. Head to www.tedobrien.com.au/flood-assistance/ to learn more. Please contact my office if you need any support on 5479 2800.

Thank You SES

I have been in touch with local SES members throughout this period and have been blown away by their generosity and bravery. Many SES workers, with their own lives and jobs to manage, have worked up to 18 hours per day to provide emergency support to those in need. True community heroes. Thank you!

Flooding: Take care and remain aware

Winston Johnston
Division 5 Councillor
Division5@sunshinecoast.qld.gov.au



Flooding across Division 5 and the Sunshine Coast region has resulted in significant damage to roads and public assets and I'm pleased to see recovery and rectification works underway.

The inspection and prioritising of works across our impacted region may take weeks and, in some cases, months - at this stage it cannot be determined when these repairs will be completed.

While the wet weather may have eased, parts of our region remain flooded, with many roads still closed or partly closed and needing major repairs.

Some of the significantly damaged roads include (but are not limited to):

- Verrierdale Road, Verrierdale
- Glenview Road, Glenview
- Elaman Creek Road, Elaman Creek
- Walli Mountain Road, Kenilworth
- Kidaman Creek Road, Kidaman Creek
- Narrows Road, Montville

Landslips have occurred in all divisional areas with some of the more severe slips affecting roads including (but not limited to):

- Hovard Road, Bald Knob
- Bald Knob Road, Bald Knob
- Policeman Spur Road, Wootha
- Perrins Road, Eudlo.

Landslips can occur for weeks to come, so if you are on the roads, please be aware of that risk and always observe and follow any signage displayed.

Unfortunately, we've had reports of people ignoring and moving road closure signage. Please never do this, it's dangerous, irresponsible and can cause ramifications with personal insurance. You are risking both your own life and those drivers who come after you as they miss potentially life-saving safety warnings because you've tampered with signage.

Thankyou

I would like to thank our community for following emergency warnings, checking on your neighbours and to the many volunteers, emergency workers and council staff who worked long shifts over many days and continued to support the Sunshine Coast during the recovery phase.

The big wet has taken no prisoners

Andrew Powell
State Member for Glass House
glass.house@parliament.qld.gov.au



Everyone is talking about the rain and the flooding and not surprisingly. In my many years in this part of the world, I've never witnessed such widespread impacts. Properties have been inundated, roads flooded (yes, even the Bruce Highway was closed for many days), mudslides, potholes, sinkholes, falling rocks and trees. Those in the north of the Glass House electorate have not been spared. Flaxton, Montville, Hunchy, Palmwoods and Maleny had incredible daily rainfalls - water tanks and pools are overflowing and most residents, even on the higher ground, experienced flooding on their properties and even in their homes.

There are reports that Woodford has not seen a flood like it. I've witnessed the devastation first-hand and my heart goes out to those affected families. Both the Commonwealth and State Governments have now announced recovery support.

The Commonwealth package includes:

• Small Businesses: 13 weeks of income support for small business owners, farmers and employees who have been impacted by the floods.

• For Queenslanders: For individuals and families directly impacted by the floods: \$1,000 per adult; and \$400 per child.

• To claim this payment and/or check your eligibility go to www.servicesaustralia.gov.au/south-east-queensland-floods-february-2022-australian-government-disaster-recovery-payment. Services Australia's Disaster Assistance phone line 180 22 66 is available for those who can't claim online.

• You may also be eligible for financial assistance and support services through the State Government, including Emergency Hardship Assistance grants of up to \$180 per person and \$900 for a family of five or more. Head to www.qld.gov.au/community/disasters-emergencies/disasters/money-finance/types-grants/emergency-hardship-assist for all the details. If you have any difficulty, call my office at 5318-8100.

Emergency hardship payments

Rob Skelton
State Member for Nicklin
nicklin@parliament.qld.gov.au



Residents in targeted areas in the Sunshine Coast and Noosa Local Government Areas who have been impacted by severe flooding recently may be eligible for financial assistance, including Emergency Hardship Assistance grants of up to \$180 per person and \$900 for a family of five or more.

Grant applications could be made through the Community Recovery online portal at www.communityrecovery.qld.gov.au.

Residents can ring the Community Recovery Hotline on 1800 173 349 to get information or apply for grants and access to support services over the phone or go to www.qld.gov.au/community/disasters-emergencies for further information.

If you have been flood affected and have been denied an emergency hardship payment due to your location, please contact my office at nicklin@parliament.qld.gov.au and include your name, contact details and address.

Disaster Funding for Sports Clubs

Up to \$5,000 in disaster recovery funding assistance is available for eligible sporting clubs and organisations.

In response to recent weather and flooding events, joint State and Federal funding has been activated to support clubs.

Level 1 funding is available towards replacement of damaged equipment that directly relates to the re-establishment of activities (including office and canteen equipment), payment of services and hire costs, and purchase of equipment and tools that assist in short term clean-up of facilities, reimbursement for the purchase of the above made from the date of the relevant disaster, funds for repairs and replacements when this amount is lower than the premium excess set by the insurance provider, and excess coverage for insurance claims.

Find out more

Eligible council areas, eligibility requirements and program information can be found at www.qld.gov.au/recreation/sports/funding/disaster-recovery

Little plover trio recovering and putting on weight



from **Donna Brennan** Wildlife Volunteers
WILVOS 5441 6200 www.wilvos.org.au

WHAT a tough couple of years Australia has had as we progress from bushfires, cyclones, and pandemic to floods. The loss of life, possessions ruined, houses made unliveable, crops ruined and livestock, domestic animals and wildlife washed away. It's just too awful to think about. Our thoughts are with everyone affected in any way by yet another unprecedented event.

Our Hotline is busy but manageable thanks to our volunteers taking calls, rescuing, transporting and caring. Sometimes I think these amazing people just work like well-oiled machines, supporting each other and working together to get the best outcome for orphaned and injured wildlife.

Rehabilitating animals, usually used to a pampered life with their carers, are now spending days under their shelters but they are the lucky ones. My little plover trio are now all well over 100 grams and look completely different to when they hatched out of their eggs. They scratch and tap with those lovely long legs and feel deprived when they can't be outside running around all the time, as they do in fine weather. Nevertheless they are happy to be distracted by a tray of dirt, finding earthworms and all sorts of tasty bugs. When the deluges of rain stop, off they go outside again. It is lovely to see them lift their wings and run and dance as they enjoy the garden!

Thank you to all who call in with concerns about our wildlife. Even if it is just a query about an animal, WILVOS are happy to answer any questions and direct you to one of our carers who is familiar with the species.

Floods, running repairs and CEO fixes

by **Jeffrey Addison**
Sunshine Coast Commuter Advocate



WE'VE been here before. This extract is from the *Brisbane Courier*, Queensland, Thursday January 7, 1926.

Palmwoods Railway Repairs

A flying gang has been stationed here for the past few weeks, effecting repairs to the permanent way between here and Woombye. A large number of sleepers have been replaced and the track generally strengthened and improved. The Railway Department has completed the erection of a new cottage on their property, to be occupied by the ganger in charge of this section of the permanent way.

Personal, - Mr Lloyd, the local post-master, has resumed duty after his annual leave. - Miss E Frawley has received notification of her appointment as assistant teacher at the local State school. Miss Frawley formerly occupied a similar position at Buderim.

Holiday traffic, - The heavy rains at the latter end of the holiday season seriously interfered with road traffic from the various holiday resorts served by this centre. Traffic on the Maroochydore road was dislocated as a result of the flood waters. Several car loads of returning holiday-makers were held up. Motorists from Brisbane were also inconvenienced on their return journey by the bad weather and roads.

Of droughts and flooding rains ...

Dorothea Mackellar OBE summed it up well in her 1908 poem: *My country*, in the first half of stanza two.

*I love a sunburnt country,
A land of sweeping plains,
Of ragged mountain ranges,
Of droughts and flooding rains.*

Indeed it's been a tough year for Queensland Rail, and for all those impacted by the calamitous weather.

At time of writing, 12 Queenslanders have lost their lives, the majority resulting from cars entering flood-waters.

The Queensland Rail (QR) network was rocked by an Aurizon freight train derailment near Traveston at 3.19am on February 23.

The north-bound freight train, designated Y279, entered track washed away by floodwaters - causing the derailment of two locomotives and four wagons. It's currently under investigation by the Australian Transport Safety Bureau (ATSB).

Access to the accident site was delayed by the severe weather.

Fortunately no-one was injured, the driver being the only occupant of the train. The weather also impacted the western downs and Sunshine Coast, causing line closures. This was mentioned by QR's acting CEO Scott Riedel, in a media release on February 25.

This accident and the weather impacts meant that rail replacement buses ran between Caboolture and Gympie North stations, adding 90 minutes to the journey.

Lines in Brisbane and on the Gold Coast were to be affected as the weather moved south. Due to impacts from flooding, weather, and branches in overhead power lines - the Sunshine Coast line wasn't able to reopen until 6.30am on Friday March 4.

We give a grateful 'thank you' to QR employees, who toiled day and night to get us moving again. Well done QR.

• In December 2021, CEO Nick Easy resigned, having earned \$825,000 in 2019-20. The CEO role is currently being rotated among the 7-member Executive Leadership Team. No word yet on the search for a new CEO. That makes a nice \$15,865 per week bonus - all round.

Crossword Solution

A	H	A	R	A	S	S	S	E			
S	H	E	D	D	C	I	V	E	T	S	
S	R	A	V	A	G	E	S	C	O	S	
A	G	O	G	P	N	O	V	E	N	A	
I	E	N	T	A	I	L	E	D	Y		
L	E	A	S	E	S	C	A	T	E	R	S
M	G	T	E								
H	U	S	S	A	R	D	E	R	I	D	E
U	L	A	T	I	T	U	D	E	J		
S	T	O	L	I	D	P	M	A	Z	E	
H	I	P	V	I	S	I	T	O	R	C	
E	L	E	V	E	N	T	I	L	T		
D	S	G	A	G	G	E	D	S			



Palmwoods Hotel est 1912

EXPERIENCE THE LEGEND



28-34 MAIN STREET PALMWOODS | BOOKINGS ESSENTIAL | 1300 PALMWOODS | WWW.PALMWOODSHOTEL.COM.AU |

FOOTY WINS ARE BACK!

GRAB YOUR BONUS STUBBY COOLER!

WIN THE ULTIMATE ENTERTAINMENT PACKAGE EACH WEEK

PLUS KAYO SUBSCRIPTIONS AND \$50 VISA E-GIFT CARDS TO BE WON

MAJOR PRIZE PACKAGE

- ★ Samsung 75" Neo QLED 8K Smart TV
- ★ Samsung Q Series Soundbar
- ★ Husky Retro Bar Fridge 110L
- ★ Family Weber Q with cart

SPEND \$60 OR MORE, COLLECT YOUR BONUS STUBBY COOLER AND ENTER ONLINE AT BOTTLEMART.COM.AU

TERMS & CONDITIONS APPLY. SEE WEBSITE FOR DETAILS.

START AT Bottlemart

BOTTLEMART.COM.AU

<p>PIRATE LIFE SOUTH COAST PALE ALE 16 X 355ML CANS</p> <p>\$45.99 EACH</p>	<p>TOOHEYS EXTRA DRY 24 X 345ML BOTTLES</p> <p>\$46.99 EACH</p>	<p>XXXX GOLD 30 X 375ML CANS</p> <p>\$48.99 EACH</p>	<p>GREAT NORTHERN ORIGINAL 24 X 330ML BOTTLES OR 375ML CANS</p> <p>\$51.99 EACH</p>
<p>BUNDABERG UP RUM & COLA 4.6%, JOHNNIE WALKER RED & COLA 4.6%, JIM BEAM WHITE & COLA 4.8% OR CANADIAN CLUB 4.8% VARIETIES 10 X 375ML CANS</p> <p>\$39.99 EACH</p>	<p>JACK DANIEL'S & COLA 4.8% CUBE 24 X 330ML CANS</p> <p>\$84.99 EACH</p>	<p>1 LITRE \$53.99 EACH</p> <p>EQUATES TO \$37.79 PER 700ML</p> <p>JIM BEAM WHITE LABEL BOURBON, CANADIAN CLUB WHISKY OR GRANT'S SCOTCH 1 LITRE</p>	
<p>SAVE \$24</p> <p>ANY 6 FOR \$30</p> <p>LINDEMAN'S BIN WINES 750ML</p>	<p>\$9.99 EACH</p> <p>GEORGE WYNDHAM BIN WINES OR UPSIDE DOWN WINES 750ML</p>	<p>\$17.99 EACH</p> <p>LA BOHEME DRY ROSÉ OR LITTLE GIANT GRENACHE 750ML</p>	<p>\$19.99 EACH</p> <p>DEVIL'S CORNER PINOT NOIR, PAXTON THE POLLINATOR ORGANIC SHIRAZ, WOLF BLASS MAKERS PROJECT RESERVE ROSÉ OR GRANT BURGE PINOT NOIR, HILLCOT MERLOT OR MIAMBA SHIRAZ 750ML</p>

BEERWAH CELLARS – BEERWAH SHOP 11, BEERWAH MARKETPLACE PEACHESTER RD TEL 5494 0477
BEERWAH DRIVE THRU – BEERWAH MAWHINNEY STREET TEL 5494 0555
GLASS HOUSE CELLARS – GLASS HOUSE MOUNTAIN SHOP 5, 9 BRUCE PARADE TEL 5493 0188
MOOLOOLAH CELLARS – MOOLOOLAH SHOP 3, 2 JONES STREET TEL 5494 7320
PALMWOODS CELLARS – PALMWOODS SHOP 5, 18-20 MARGARET STREET TEL 5445 9266
PALMWOODS DRIVE THRU – PALMWOODS 28 MAIN STREET TEL 5445 9003

All specials available from Wednesday 2nd March until Tuesday 15th March 2022. Images are for illustrative purposes only. Specials available only in the state of Queensland. Prices may vary in country and far North Queensland. Different pack sizes and variants may not be available in all stores. Bottlemart supports the responsible service of alcohol.

FOR SALE NAMBOUR	FOR SALE AURA	FOR SALE NAMBOUR	FOR SALE NAMBOUR	FOR SALE BURNSIDE
				
UNDER CONTRACT	INDUSTRIAL SHEDS FOR SALE			
51 WILLIAM STREET		6 ESTHER PLACE	40 EXPECTATION CIRCUIT	10 REGENT PLACE
3 2 2 1012m ²		4 2 2 827m ²	4 2 2 434m ²	4 2 2 638m ²
Andy Sharma: 0410 989 177	Jason Rice: 07 5441 1344	Andy Sharma: 0410 989 177	Andy Sharma: 0410 989 177	Andy Sharma: 0410 989 177

Looking for a Property Manager? Don't make a habit of it. **At RE/MAX,** we don't do revolving doors.

Contact our outstanding Property Management team on 5470 7000 to experience the difference.

We promise, you won't be disappointed.



RE/MAX Property Sales



remaxpropertysalesandrentals | 5470 7000 | www.remaxpropertysales.com.au

CUB CADET MODELS AVAILABLE FOR IMMEDIATE DELIVERY

<p><i>Cub Cadet</i></p> <p>4 WHEEL STEER ZERO TURN</p> <p>FREE Local Delivery</p> <p>6 YEAR DOMESTIC WARRANTY</p> 	<p>3 YEAR DOMESTIC WARRANTY</p> <p>CUB CADET ULTIMA ZT1 ZERO TURN LEVER</p> <p>ZT1</p> <p>\$6,499</p> <p>NEW MODEL</p>  <ul style="list-style-type: none"> • 42" CUTTING DECK • 697CC CUB CADET ENGINE • LED HEADLIGHTS 	<p>LIMITED SPECIAL EDITION</p> <p>CUB CADET RZTS46</p> <ul style="list-style-type: none"> • 20HP KOHLER V TWIN ENGINE • 46" STEEL CUTTING DECK • FIRST MODEL WE HAVE RECEIVED WITH FULLY ADJUSTABLE STEERING COLUMN • WITH LED LIGHT AND 12V SOCKET <p>RZTS46</p> <p>\$7,669</p> <p>RRP \$7,799</p> 	<p>3 YEAR DOMESTIC & 3 YEAR COMMERCIAL WARRANTY</p> <p>CUB CADET PROZ 554S COMMERCIAL ZERO TURN</p> <ul style="list-style-type: none"> • 27HP V TWIN KAWASAKI ENGINE • 54" 7 GAUGE CUTTING DECK • ZERO TURN STEERING WHEEL • 20 DEG SLOPE CAPABILITY <p>PROZ 554S</p> <p>\$19,499</p> <p>RRP \$22,099</p> 	<p>3 YEAR DOMESTIC & 3 YEAR COMMERCIAL WARRANTY</p> <p>CUB CADET PROZ 760S COMMERCIAL ZERO TURN</p> <ul style="list-style-type: none"> • 31HP V TWIN KAWASAKI ENGINE • 60" 7 GAUGE CUTTING DECK • ZERO TURN STEERING WHEEL • 20 DEG SLOPE CAPABILITY <p>PROZ 760S</p> <p>\$22,499</p> <p>RRP \$24,999</p> 
--	---	---	--	--

Take it today. 36 months Interest Free No Deposit. *Conditions Apply

North Coast MOWER CENTRE | Ph: 07 5441 5455 | 36 Coronation Ave, Nambour | www.northcoastmowercentre.com | Mon - Fri: 8am - 5pm | Sat: 8am - 12pm