

**AUCTION** 15 Hillsview Place  
Saturday 26<sup>th</sup> Nov - 11am **MAROOCHY RIVER**

4 🏠 2 📺 4 🚗 1.18Ha



**NEV KANE**  
Real Estate since 1953

**Robert Jeffery 0400 883 117**

## Lights, Camera, Nambour!

### Film Crew to capture the best Nambour has to offer

THEY helped launch the *I Am Nambour* brand and video series in 2021 and now Nambour's very own video company, Red Boss Productions, are back at it again for their home town.

"Nambour has so much on offer to work, play and live," said Reimagine Nambour Ambassador Rhonda Billett. "As a part of our collaboration with Sunshine Coast Council, Reimagine Nambour, Nambour Chamber of Commerce, Nambour Tram Co and Nambour Retailers Group, we are rolling out a new up and coming video series that showcases Nambour's best assets.

"It's all a part of our Top 3 roll out for Nambour, that our groups have been working on for the last six months."

Red Boss, located in C-Square, will play a pivotal role in capturing and producing some updated, picturesque aesthetics of our region for everyone to share. "We have many new people that have moved to our region as well as thousands of visitors daily. Nambour has lots to offer from lush green spaces, natural water falls, to chic shopping options that include our recent Vintage and Retro Op Shop Hip Hop Map," said Rhonda.

Red Boss Productions are renowned for their work with an impressive client list including San Diego Zoo, Youi, Ken Mills Toyota, Whites IGA and Aussie World.



Red Boss Productions Co-owners James Unwin, left, and Jake Pierce will be taking to the streets to capture Nambour footage.

"At Red Boss, we craft high-end, engaging video, we can turn your story into a brand film that shares your passion with your customers," said owner James Unwin. "In this case

Nambour is our brand and the world are our customers. "We'll be showcasing what Nambour has to offer, from family friendly outdoor adventures,

to the best bars and dining experiences. We live and work in Nambour, so we have a vested interest in attracting people to the area."  
• Go to [www.redbossproductions.com.au](http://www.redbossproductions.com.au).

# 'We're so used to it we just cop it'

A business owner says Nambour CBD police patrols were needed to help quell crime and anti-social behaviour that had reached a level in some parts of town that businesses were growing accustomed to it.

The person, who did not want to be named, in case she or her business was targeted said an incident last week highlighted the issue for her.

"That (incident) was a bit more aggressive than usual, I guess, but it's not uncommon. You see yelling and screaming every day from the same groups. We do get outsiders coming in to town as well. The guy (who behaved aggres-

sively), he was there last night again, but he didn't cause a problem. So it's unpredictable. It just depends on what (alcohol or drugs) they've had during the day, I guess.

"But I know that person now. Even though I've seen him many times that was our first run-in and now I have feelings against him. So I don't trust him. I don't want to be around him. I don't know what he's capable of. We go out to our cars at night, after dark, so you don't know who's hanging around."

The business owner said foot patrols or a Police Beat presence in town would make a difference.

"I know they've done that big, flash new police station, but that doesn't make much difference to us down here.

"I know it's never going to happen, but a Police Beat in one of the little empty shops in town, is what we need. They should have some sort of coverage where someone is walking that perimeter every hour or so. Then they will no longer be able to just sit and drink because they'll risk being fined.

"At the moment, by the time we call the police, they're gone anyway or something's changed. There could be 20 people doing some-

thing, and then there's none. So it's hard to clamp down on."

### Yelling and screaming pretty much every day

The shop owner said unnerving yelling and screaming or something intimidating happened on a near daily basis.

"At some point in the day, every day for sure. Obviously, more so in the afternoon because that's when they've been up and drinking for a while or whatever. And the behaviour that we

• To page 2

**WOOMBYE VETERINARY SURGERY**

**VET**

**5442 2000**

Dr Charlotte Ashton-Heinius B.V.Sc.

23 Blackall Street Woombye

**SUNSHINE STEERING**

*Straight up front.*



RTA No. AU49451

**David & Tina Ledger** P 5478 8020 F 5478 8850

Power Steering • Suspension • Wheel Alignments  
Child Restraints • Roadworthy Inspections  
Tyre & Balancing • All Mechanical Service & Repairs  
Air Conditioning • All Brake Repairs  
We also sell nuts, bolts and tyres.

4/27 Main St, Palmwoods, Qld 4555

**Sunstate Gearbox & Diff Service**

**Specialising in:**

- Manuals
- Differentials
- Automatics
- Tailshafts
- Transferscases
- Clutches

**OBLIGATION FREE APPRAISAL**

5 Charles Court, Kunda Park  
**Ph: (07) 5476 8911**  
[www.sunstategearbox.com.au](http://www.sunstategearbox.com.au)

**Let Us Help You Create Your Dream Garden**

With the Largest Range of Quality Products at the Lowest Prices

- Friendly, expert advice
- On time delivery guarantee
- Online browsing & purchasing available

Contact our friendly team for more information or to order

**COASTAL LANDSCAPE SUPPLIES**

07 5453 7100 18 Kerryl St, Kunda Park  
[www.coastallandscape.com.au](http://www.coastallandscape.com.au) | [kylie@coastallandscape.com.au](mailto:kylie@coastallandscape.com.au)

BARK & MULCH SOILS GRAVEL PERLITE SAND SANDSTONE ROCKS ROADBASE TURF TIMBER PAPERBARK

**BUY • RENT • SELL**

**RE/MAX**

50 Lowe Street, Nambour | RE/MAX Property Sales & Rentals | [outstandingagents@remax.com.au](mailto:outstandingagents@remax.com.au) | 07 5470 7000



# SUNSHINE VALLEY Gazette

## Editorial

If it matters to you, it matters to us. Send your news to Cameron Outridge 0409 424 487 editor@sunshinevalleygazette.com.au

## Advertising

To advertise contact Tanya Outridge 0400 069 711 tanya@sunshinevalleygazette.com.au

## Designer

Katie Buckley: katiebuckley@live.com

## Distribution

10,000 copies are distributed to popular pick-up points throughout the hinterland including at Palmwoods, Woombye, Nambour, Chevallum, Eudlo, Mooloolah, Hunchy, Yandina, Maleny, Montville, Flaxton, Mapleton and Forest Glen.

## Gazette in Print, Email, Online & Facebook

The Gazette is Printed Fortnightly & Online Always. A pdf form of the printed paper can be found on our website. Stories are also posted on Facebook, on our blog and via email to our subscribers.

## Editorial Policy

Every endeavour is made to publish submissions but we can never guarantee that any article will definitely appear. We prioritise constructive news which strengthens the community fabric.

Our broad aims are to:

- Connect the Community.
- Acknowledge Achievement.
- Back Business.

We encourage respectful & constructive debate on local issues in our letters section.

## Thanks to our Advertisers

The Gazette is completely funded by our advertisers who make community journalism possible. Without them, there would be no paper. Please support them and let them know you found them in the Gazette.

# Council launches Nambour CBD safety survey

SUNSHINE Coast Council launched a Nambour Community Safety survey on Monday, November 14.

Division 10 Councillor David Law said the Nambour Community Safety online survey will be undertaken in partnership with UniSC, to better understand public perceptions of safety in the Nambour Special Entertainment Precinct and broader CBD.

“The findings will be used to explore opportunities to more effectively create a welcoming and activated Nambour CBD and entertainment precinct,” Cr Law said.

The information from the Nambour Community Safety survey is the second phase and will be used by UniSC and council to better understand perceptions of safety in Nambour.

The initiative comes after the recent launch of Reimagine Nambour’s online “Petition for a Safer Town” seeking State Government action to quell drug and alcohol abuse, in-street violence, youth crime, vagrancy and menacing behaviour in Nambour.

Cr Law said the feedback would be compared with previous research findings including crime and safety data and to assist in the development of strategies to minimise crime and safety issues.

Cr Law said Queensland Police data shows that Nambour generally has a lower crime rate than many other areas.

This research can enhance activation of public space, community cohesion and business confidence to strengthen connection to Nambour, the Nambour Special Entertainment

Precinct and broader CBD, Council says.

Dr Emily Moir, who is leading the UniSC research team, welcomed people who lived, worked, or visited Nambour regularly to complete the Nambour Community Safety online survey.

## Second survey to look into street perceptions

Council will also undertake a second survey as part of the Nambour (Namba) Place Revitalisation Project, where it will undertake important research into community perceptions of various streets within the Nambour Town Centre.

“People are invited to visit the town centre and complete a Place Experience Assessment survey by snapping a QR code in five different streets across Nambour – Currie Street, Bury Street, Howard Street, Lowe Street and Ann Street,” Cr Law said.

“They can also complete the Nambour Place Score survey in person until December 11. The project team will also be onsite in Nambour in late November to conduct in-person surveys with the community.

“The information will feed into previous community engagement and planning with community groups and council to outline a vision for Nambour’s future.”

Information from this work will provide baseline data which will inform future designs and important insights on how the town centre will look and function.

By sharing ideas for improving the town

centre, participants also have the chance to enter a Place Score competition and win one of five \$100 online shopping vouchers (terms and conditions apply).

Nambour Place Revitalisation Project is part of the Nambour Centre Activation Project (NCAP) which is focussed on invigorating the major hinterland centre over the next 10 to 15 years.

For details go to [www.sunshinecoast.qld.gov.au](http://www.sunshinecoast.qld.gov.au) and search Nambour Place revitalisation or similar.

Provide your feedback on the Place Score survey before December 11 by snapping the QR code or catch up with the project team who will be in Nambour.

• To complete the Nambour Community Safety Research Project Survey go to [www.haveyoursay.sunshinecoast.qld.gov.au](http://www.haveyoursay.sunshinecoast.qld.gov.au) before November 28 and search “Nambour Community Safety Research Project” or similar.

• To see crime stats go to [www.mypolice.qld.gov.au/queensland-crime-statistics](http://www.mypolice.qld.gov.au/queensland-crime-statistics)

• To see Stage 1 of the Nambour Community Safety Review go to [www.research.usc.edu.au](http://www.research.usc.edu.au) and search “Nambour safety” or similar.

• To sign the Petition for a Safer Town go to [www.facebook.com/iamnambour](http://www.facebook.com/iamnambour)

► Ed’s Note: Readers should understand the surveys were already planned as the second phase of Council and the University’s Research and are coincidental to Reimagine Nambour’s safety initiatives and the Gazette’s recent coverage of CBD safety.

# Businesspeople becoming accustomed to awful behaviour

## • From page 1

see is not just alcohol. It’s drugs. It’s all of it.”

She said it was wrong that businesses in town were actually becoming accustomed to behaviour that might be quite shocking to the average person.

“We’re used to it because we laugh it off and go, ‘Oh, it’s Nambour’. But, realistically, it’s not funny. It’s only bearable because you have no choice. We have to get used to it because nothing’s being done. If this (situation) happened all of a sudden, it’d be a massive, huge shock. But we’re so used to it that you just cop it.”

She said she thought there had been a surge in criminal and anti-social behaviour lately.

“Yes, definitely, to the point where businesses have come together and we’re trying to raise money for all the businesses that’ve been broken into.”

She said she couldn’t explain official Queensland Police crime stats which indicated a decrease in crime in Nambour since 2018.

“All I see is what I see every day, and it doesn’t seem to be getting any less to me,” she said. “I don’t know what they’d call crime. There’s definitely a lot going on now. I know I’ve got a

couple of friends with businesses who’ve been broken into.”

In response to safety concerns Reimagine Nambour recently launched an online “Petition for a Safer Town” seeking State Government action to quell drug and alcohol abuse, in-street violence, youth crime, vagrancy and menacing behaviour in Nambour (sign the petition at [www.facebook.com/iamnambour](http://www.facebook.com/iamnambour)).

Renowned lawyer and Reimagine Nambour Chairman Peter Boyce remains determined to keep the issue of CBD safety high on the radar of authorities.

# Your Local Property Manager

# RayWhite.

- 0 Outstanding Maintenance Jobs
- 100% Occupancy Rate
- 6 Average Days on Market
- \$675 Average Rent Amount
- 34 owners switched to Ray White Nambour in the last 2 months!

## Do you want to experience the Ray White Difference?

### Call Abbey today!

## Abbey Foster

# 0401 253 591

[abbey.foster@raywhite.com](mailto:abbey.foster@raywhite.com)





# Cr Law responds to concerns

From Div 10 Cr David Law

I am writing in response to the recent claims that Nambour CBD has experienced "... a drastic increase in unlawful behaviour..." in the last 18 months. This assertion has since been admitted by the author to have no basis in truth. In fact, the opposite is true. Nambour has had a reduction in crime over the last five years and specifically the past 18 months.

The local Queensland Police Service along with other police units have played a significant role in this reduction of crime in Nambour. However, while crime rates have dropped, I know that crime still occurs in Nambour's CBD, but it is not increasing, Nambour is no worse than anywhere else.

What we are left with then is the perception that Nambour is unsafe, or that you may encounter something on the streets of Nambour that makes you feel afraid or just uncomfortable. It is certainly true that in the area around Lowe Street, Ann Street and Short Street there are sometimes people who are visibly unpredictable. This may cause fear due to the loud, unexpected behaviour even when nothing dangerous or criminal is occurring.

This natural human response is due to nega-



tivity bias. We are all hardwired to look for risk and danger, so we are more likely to see the things that create fear in us which then prepares us for fight or flight.

I will continue the work to understand these community perceptions so that together we can create a Nambour Centre in which everyone feels safe. I work from a place of the actual reality of what is occurring on our streets to understand the problems. From a place of knowledge and understanding, we can do the work to find and implement solutions.

Last year in collaboration with University of the Sunshine Coast we completed research for the report titled, "Nambour Community Safety Review". The research findings include actual crime and safety data which showed that Nambour generally has a lower crime rate than many other areas. Please contact me if you would like a copy of this report.

Phase two, as recommended in the report, commenced in July this year. A research survey is now open until 28 November to understand public perceptions of safety in Nambour Centre. The outcomes will help to enhance the activation of public space, strengthen community cohesion and business confidence to create a vibrant, activated centre of Nambour.

## 'It felt like walking through a ghetto'

### Facebook Feedback:

SOCIAL media feedback has been largely sympathetic towards local businesses coping with CBD safety issues. Comments followed last edition's coverage of Reimagine Nambour's Safety Petition launch (sign the petition at [www.facebook.com/iamnambour](http://www.facebook.com/iamnambour)).

• "7am this morning and two drug dealers sitting on the footpath at the railway station & McDonalds," reported one person in response to last edition's coverage.

• "Nambour has f--- all police presence to make people feel safe. Can't even walk along the creeks or play in a park without (seeing) a junkie and a syringe."

• "I was in there yesterday morning and honestly it felt like walking through a ghetto. People passed out on benches, groups of teens acting feral. I watched a few older people walking around and actually felt concerned for their safety. Some police presence would help people feel a bit safer."

• "I literally had an addict walk out and try to wave me down in front of me and my elderly mother whilst driving up the back of St Joseph's today."

• "It is true, our beautiful town has recently suffered under the growing breakdown in society on many levels. Over the past few

months our streets have deteriorated. So many businesses and charities straining under the pressure," said another.

• "Nambour is being used ... as a place to keep all unsightly things away from their tourism areas. It is really terrible that Nambour businesses have to put up with this."

• "Irrespective of the cause there are issues. More cops on the beat and CCTV required."

• "We have a fancy new police station but no police." Others said crime figures showed Nambour was no worse than other towns and highlighting the issue was unfair to vulnerable people and would only give Nambour a bad name and discourage investment.

• "Add some statistics regarding the level of crime comparatively to other towns on the Sunshine Coast. Stop with your smear campaign."

• "It's all a tory ploy to paint Qld Labor as soft on crime. The actual crime stats are the lowest in the region. These judgemental stories of undesirables have no place in serious journalism."

• "Blaming treatments for addiction for your constructed moral panic. Have some integrity!"

• "These guys are just part of a misinformation and scare campaign being conjured up by local conservative lobbying groups and state/federal Liberal MPs."

## Break and enter at popular Nambour cafe

NAMBOUR'S Endless Time Cafe had to replace a large window pane after a determined thief smashed it to gain entry and steal tip jar takings and drinks on November 1.

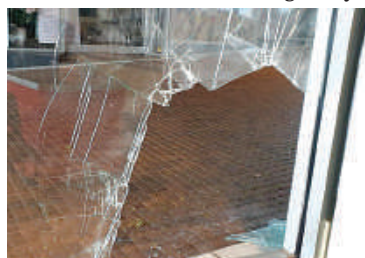
"It wasn't a nice thing to have happen, our tip jar was pretty full in notes and coins, and we're kicking ourselves that it hadn't been counted in a while," said Jean Smart who has owned the cafe with husband and chef Paul for seven years. "It has been happening in lots of places lately in Nambour and other areas too. The guy actually came in twice, the first time he loaded his bag with the milk, water, and juices plus some food that was also taken. Then he came back and left again at 2am with the tip jar under his arm."

The Smarts got a call at 2.30am on Tuesday morning (November 1) from security.

"It was horrible to see what had happened when we got there, but it could have been a lot worse," said Jean. "We saw video clips when we arrived not long after being informed. The window got fixed mid-day and the police were there very early to take photos and fingerprints. The Sergeant did a great job. From what we know someone has been arrested."



Owner Jean Smart and, below, the broken window.



Jean said the tip jar may have contained up to \$400. She said the thief entered via a side window because it was concealed from passers by. Glass panels at the cafe have been broken before but this was the first time anyone gained entry.

Police obtained video footage from a nearby camera. "We just feel for our staff, losing a very full tip jar plus losing their working hours for that day too isn't good. But what can you do? Just have to get on with it and stay positive."

Jean said matters were made worse when she had a fall next day at Coles. "But everyone was fantastic, can't thank them all enough. Just need to get my hip fixed then hopefully no more silly falls."

"And it's so lovely receiving everyone's support. We can't thank everyone enough. Nambour locals and all our lovely customers and staff have been very supportive to us and of all businesses that

have had a similar incidents happen lately too." Endless Time Cafe is in C-Square, 52-64 Currie Street Nambour open weekdays (except Monday) until 2pm. And weekends until 11.30am. Children's meals available and dogs welcome.



**The Denture Care Group**  
*Sunshine Coast*

Caloundra | Maleny | Woombye



**BEFORE**



**AFTER**

**MAKE THE MOST OF YOUR HEALTH FUND THIS YEAR**  
**CONTACT US TO FIND OUT HOW**

Book a Consult with us this month so we can help you get the most out of your benefits and have you leave smiling.



Aaron Pryor

**P 07 5442 1721**

**HINTERLAND VIEW DENTAL 6 Hill Street, Woombye**

[denturecaregroup@gmail.com](mailto:denturecaregroup@gmail.com)



## DO YOU VALUE YOUR TEETH?

**Healthy Teeth, Healthy Smile**

At Hinterland View Dental we will look after you.

- Locally Owned and Operated
- Experienced and Friendly Staff
- Serene Environment

**NO GAP or 50% off all Check Ups and Cleans**

**Complementary Orthodontic and Cosmetic Consultations**

[www.hinterlandviewdental.com.au](http://www.hinterlandviewdental.com.au)

**6 Hill St, Woombye**  
(opposite the Woombye Bowls Club)

**Call 5442 2378**



**Hinterland View**  
DENTAL



# Criminology expert gives recommendations

**Q & A** with Tim Prenzler, pictured, Professor of Criminology School of Law & Society, University of the Sunshine Coast. Prof Prenzler is one of four members of the UniSC's research team involved in the Nambour Community Safety Research Project



**Q: Do you think crime is a problem in Nambour compared to other Sunshine Coast towns?**

A: "The police data we obtained for our study found that recorded crime rates in Nambour were generally lower than those in Caloundra and Maroochydore, and in fact the whole Sunshine Coast. They were also lower than those in the comparable towns of Bundaberg, Gympie and Maryborough; and lower than those for Queensland as a whole. However, the report does not downplay crime as a problem in Nambour, referring to 'a substantial number and wide variety of types of victimisation' in any year."

**Q: Can you explain the apparent discrepancy between the wider public's perceptions of Nambour and the official crime statistics?**

A: The crime data we used covered the whole Nambour Police Division. That's a large area that includes the suburbs and surrounding localities. Crime as a social issue in Nambour appears to relate primarily to the central business district, and the police crime map does show that offences are concentrated in this area - although this is a normal profile for any town or city. Stage 2 of the Nambour Community Safety Review, now underway, will break down crime types and locations by making more detailed use of the police crime map. We are also running a public perceptions and experiences survey, and conducting stakeholder focus groups. These sources should all help to clarify these issues.

**Q: Can you explain the apparent discrepancy between business people's perceptions of CBD crime and the official crime statistics?**

A: This might relate to the differences between what's happening in the suburbs and what's happening in the town centre.

**Q: Do the public have reason to be sceptical of the crime stats, considering people are seeing unlawful activity happening before their eyes (eg drug deals, disorderly conduct).**

A: Yes and no. Police statistics for property crimes like burglary and motor vehicle theft are good but much less reliable for more personal crimes like assault. The recording of drug offences and

disorderly conduct offences involve a lot of discretion, so I can't comment on the reliability of data in any specific location. Official data on disorderly conduct are usefully supplemented by systematic observation studies of the type we conducted in Phase 1 of the project, and these should be a standard part of any well-resourced public space crime prevention program. Surveys and focus groups, of the type we are running in Stage 2, are also useful.

**Q: Are there steps that can be taken to alleviate behaviour problems in the CBD - aggressive/erratic behaviour that is not strictly criminal but nevertheless intimidating?**

A: We identified some efforts at visible foot patrols by police in Nambour in previous years that were favourably received but were stopped because of the deployment of officers to pandemic control duties. One of our main recommendations in the Stage 1 report was to increase guardianship through more police and/or security foot patrols, but with a welfare orientation and input from social services professionals.

**Q: Should the drug treatment facilities be moved back to the Hospital?**

A: Our study found that the facility generated concern amongst some people. We expect

that Stage 2 of the study will shed more light on this issue. Ultimately, the question requires a response that is negotiated by the relevant parties, taking factors like client access and public tranquillity into account.

**Q: Is it possible to summarise your report into some simple steps that should be implemented in Nambour?**

A: Our first recommendation was for more research to obtain a better picture of crime dimensions and public concerns with a view to designing tailor-made interventions that have the best prospect of being effective. That's now happening with Stage 2. At the same time, we cited a diverse range of successful crime prevention case studies that could be adapted for use in Nambour. To my mind, the most likely successful approach will involve something along the lines of a Business Improvement District - or BID - program. It basically involves a long-term urban renewal process: improving

we need to work out and implement a comprehensive plan that is data-driven and has all stakeholders on board. That's likely to include improvements to streetscapes and lighting, traffic calming, and utilisation of empty premises. Then, long-term, maintaining the program will be a challenge. There are lots of crime prevention programs on the record that were very successful initially but eventually fell apart.

**Q: Would regular police foot patrols in the CBD help alleviate antisocial behaviour?**

A: I certainly think so and the report includes examples from around the world. A centrally located police beat shopfront would probably need to be part of the mix. The patrol officers can be police, security officers or a mixture of both. They need to have special training and protocols need to be in place. The program has to be properly organised, resourced and managed in order to succeed.



**How to provide feedback**

► To complete the Nambour Community Safety Research Project Survey go to [www.haveyoursay.sunshinecoast.qld.gov.au](http://www.haveyoursay.sunshinecoast.qld.gov.au) before November 28 and search "Nambour Community Safety Research Project" or similar.

► To see crime stats go to [www.mypolice.qld.gov.au/queensland-crime-statistics](http://www.mypolice.qld.gov.au/queensland-crime-statistics)

► To see Stage 1 of the Nambour Community Safety Review, referred to in this story, go to [www.research.usc.edu.au](http://www.research.usc.edu.au) and search "Nambour safety" or similar.

## Personalise your home with Custom Made Curtains

MOBILE SERVICE

We come to you!

SERVICING THE ENTIRE COAST & HINTERLAND

- Choose from our large range of beautiful fabrics
- Use our expert advice to get the best look for your home
- Many looks and styles available to suit the character of your home
- Our experienced installer will fully install your new curtains
- Combine with blinds or shutters to compliment the look of your new curtains
- Do just one room or your whole home

Personalised service and advice

Call us for an on-site measure and quote. Our experts will give you the right advice about the best product for your project.

# 5441 6000

[www.customcurtains.com.au](http://www.customcurtains.com.au)

CUSTOM Curtains and Shade

Blinds • Awnings • Curtains • Shutters • Security • Umbrellas

Proudly serving the Sunshine Coast for over 16 yrs

# DentalExcel

## WE'RE HERE FOR YOU!

NOW OPEN FOR ALL PROCEDURES

In line with Stage 1 restrictions, we look forward to welcoming you back for ALL of your dental needs.

COVID-19 Screening measures in place to ensure safety.

Dental Excel is proud to be a part of the MARLEY DENTAL GROUP

# DentalExcel

Bulk Billing Medicare Child Dental Benefit Scheme for Eligible 2-17 yrs

• Family Dentistry • General Dentistry • Cosmetic Enhancements • Zoom® Teeth Whitening

• Veneers • Crown and Bridge • White Fillings • Preventative Dentistry • Children's Care

• Gum Disease Maintenance • Dentures and Veterans Affairs • Dental Implants

Payment plans available - no interest ever

Open Monday to Saturday • Early and Late Appointments

Ph: 5445 0166 2-4 Margaret Street, Palmwoods [www.dentalexcel.com.au](http://www.dentalexcel.com.au)



# Kimono project makes it out of framers' doors, but only just

THE team at Yandina Art and Framing are accustomed to a broad range of framing projects but the latest job they have completed has been the biggest and most complex to date.

"To be honest, we weren't really sure how we were going to tackle it when it was first commissioned," said business owner Bill Gissane.

"After much problem-solving and intricate work, we are extremely excited to see it finished."

Director of Spirit House in Yandina, Acland Briarty, commissioned the framing of a traditional Japanese wedding kimono, which will be hung in the Spirit House restaurant.

"The kimono itself is just beautiful," Bill said. "So we wanted to showcase it in such a way that the detail and opulence were accentuated, rather than overwhelmed, by the frame."

The project took around a month to complete, and while traditional framing practices and techniques were used, the sheer size and weight of the kimono demanded some heavy duty reinforcement.

"The box that we constructed to house the kimono is 1.5 metres wide, 2.2 metres high, 20cm deep, and the perspex on the front is 4.5mm thick," said Bill.

"It is incredibly heavy; around 60kgs once we put the kimono in. In fact we had a moment of panic when we realised that it was too big to get out the door!" he laughed.

"We solved this by hand-pinning the kimono in so that we can tip it on an angle to get it out the door. There are 6,000 pins and a great deal of hand stitching to hold the fabric onto the backing wall of the frame," Bill said. "Our team



From left, Mitchell Pask, Sophie Theobald-Clarke and Bill Gissane with the framing project commissioned by Spirit House.

has done an incredible job, because it is meticulous from every angle."

The project was led by senior framer, Charmaine Temple-Smith and former carpenter turned framing expert, John Scaroni, who built the box that the kimono is housed in.

"It gives us such a sense of pride and happiness that this job has been commissioned and produced locally. It will be a huge thrill to see it installed on site."



Serge Doumergue is centre wearing the plain apron with two blue rosettes. David Melville is on his right, Gary Ackerman on his left and Doug Wells is on Gary's left.

## Lodges welcome new Montville member to proud traditions of Freemasonry

FREEMASONS Lodges on the Sunshine Coast joined forces on Saturday night to provide a memorable experience for one of their newest members.

Montville Lodge No. 260 hosted the evening to pass Bro Serge Doumergue to the Masonic 2nd Degree on the night.

Mr Doumergue became a Freemason four months ago and is a descendant of a long line of Masons starting in France in 1688. Mr Doumergue said that he had given thought to becoming a Freemason for more than 20 years before making the final decision to join. He now believes that following in the steps of his ancestors and joining the Masons is the best thing he has done in a long while.

United Grand Lodge of Queensland, Assistant Grand Master, RW Bro David Melville attended the ceremony in company with twelve Grand Lodge Officers. It was witnessed by 46 Freemasons, including Grand Lodge.

The combined meeting of Sunshine Coast Lodges is an annual event, and the Masonic 2nd Degree is the usual ceremony of choice for the evening. Lodges from around the Sunshine Coast assisted in the ceremony including members from Maroochy Lodge, Kenilworth Lodge, Cooroy Queen Alexandra Lodge, Mooloolah and Maleny Lodges. In all eight visiting Masters

were in attendance.

The event was further enhanced by Grand Lodge who added colour and atmosphere to the occasion.

"It is always a pleasure to visit the Sunshine Coast and spend time with the brethren, said RW Bro Melville. "Freemasonry has a long history on the Sunshine Coast being part of the community since the late 1800s."

Montville Lodge itself was consecrated as a Scottish Lodge during the darkest days of the First World War in 1918. It has been an important part of the community ever since, undertaking much work for charities over the years.

Montville Lodge Worshipful Master Gary Ackerman said it was an honour for him to be Master of the Lodge during the ceremony.

"For me it's ceremonies such as this which give a great deal of personal satisfaction and also a bit of a thrill to see a brother take his 2nd Degree ... for most it is one of those very special experiences in their life."

He said Freemasons made every effort to ensure their ceremonies were enjoyable and a learning experience for members.

To learn more about Freemasons Queensland contact Montville Lodge at email montville260@outlook.com or Freemasons Queensland on Tel: 3229 3533 or at email membership@uglq.org.au

**ASPHALT & BASE CONSTRUCTION** CALL JOSEPH 07 5478 9834 | 0402 932 159  
**38 YEARS EXPERIENCE FREE QUOTES**

**RED BROWN & BLACK ASPHALT | MACHINE & HAND LAID HOTMIX ASPHALT**

- CAR PARKS
- SALES YARDS & DISPLAY AREAS
- DRIVEWAYS
- TENNIS COURTS
- FOOTPATHS, KERBS
- GRAVEL ROAD
- CRACK SEALING
- PRIVATE ROADS
- SPEED HUMPS
- MODERN, STYLISH EDGING
- EXCAVATIONS & DRAINAGE

[www.asphaltbaseconstruction.com.au](http://www.asphaltbaseconstruction.com.au)

**CONTAINERS FOR CHANGE**

**NAMBOUR CONTAINER REFUND DRIVE THRU**

**STAY IN YOUR CAR WE PAY CASH**

**URBAN DEPOT**

**FIND US AT - 1 WINDSOR RD, BURNSIDE**

@URBANDEPOTRECYCLE



Now offering  
**art restoration services**  
 with our in-house technician

Yandina Art & Framing  
 Framing | Gallery | Art supplies





# Palmwoods State School's moving day of Remembrance

EVERY child at Palmwoods State School laid a poppy during a moving Remembrance Day Ceremony at the school on Friday (November 11).

Palmwoods students remembered the dedication of all those who have served Australia in conflicts around the world, and in particular, those who sacrificed their lives serving our country.

Bringing the commemorative focus to a local level, students remembered the 18 local citizens who sacrificed their lives in WW1 and WW2 to keep Australia a free nation.

It also honoured those who continue to serve in the armed forces today to keep us safe and free.

"The focus of Friday's Remembrance Day ceremony was the history of the red poppy and its significance to remembrance ceremonies around the world," said Deputy Principal Craig Wockner.

"Thanks to the generosity of the Palmwoods RSL, who donated 300 poppies to the school, students were invited to lay a poppy in The Palmwoods State School Poppy Field."

School captains laid a wreath at the school epitaph while students showed their respects laying poppies.

Then year 6 students Aya and Elishka performed a stirring rendition of *Abide with Me*.

"The behaviour and respect demonstrated by students today illustrates that the next generation of Palmwoods citizens values the sacrifices of those who have come before us and shows that the values and integrity of our fallen ancestors lives on in our Palmwoods community," said Mr Wockner.

Every year on the eleventh hour of the eleventh day of the eleventh month Australia pauses to remember those men and women who have served and those who have died in all wars and peacekeeping operations.



From left, Principal Bec Hutton, Isla Tomlinson, Maya Shakespeare, Malakai Maru and Deputy Principal Craig Wockner at the school epithet.



From left, School Captains Malakai Maru, Maya Shakespeare and Isla Tomlinson lay poppies at the poppy field at ceremony.



The Men's Shed was able to purchase a variety of battery-operated power tools.

## Heritage funds put to good use at local Men's Shed

SUNSHINE Valley Men's Shed President Ron Baumann and the Shed's Vice President, Grants, David Brigg recently attended a gala affair hosted by the Heritage Palmwoods Community Bank.

The evening at the Palmwoods Hotel was to enable the Bank to generously distribute funds for this year's community grants.

The Sunshine Valley Men's Shed is truly grateful to the Heritage Community Bank for the grant.

The Men's Shed was able to purchase a variety of battery-operated power tools (purchased from local businesses), additional safety equipment and honeybee equipment.

The Men's Shed honeybee group also benefited by receiving further equipment to assist in the separation and bottling of the honey. Honey is produced through the beehives and marketed through our roadside stall at the entrance to the grounds.

The Sunshine Valley Men's Shed offers a wide range of activities from woodworking, metalworking, native and honeybee bee keeping to growing fruit trees and market gardening.

Men wanting to learn new skills or expand on their own skills using a wide range of modern tools or just share in the camaraderie amongst like-minded fellows are most welcome to join the group.

The Shed is on Blackall Range Road, West Woombye. Main activities are conducted every Wednesday morning from 8am. Enquiries to 0498 463 430.

## Nicklin organisations earn Grant funding

MORE than 740 organisations across Queensland have recently been successful in receiving a share of almost \$30 million, as part of the recent Disaster Recovery Round of the Gambling Community Benefit Fund (GCBF).

Locally, the Yandina School of Arts was Nicklin's biggest winner, being awarded \$100,000 to upgrade their community hall.

Other winners in the Nicklin electorate include: Woombye Snakes FC, Yandina Cricket Club, Nambour Bowls Club Official, Palmwoods Hinterland Hawks Cricket Club, Yandina North Arm Rural Fire Brigade, Sunshine Coast Disc Golf Club, CWA Palmwoods, Yandina and District Pony Club, Mapleton Bowls Club, Blackall Range Independent School, Hinterland Blues Australian Football Club, and the Nambour Branch of the Australian Red Cross.

"Since being elected, I've assisted more than 80 organisations to share in over \$1.4 Million from the Gambling Community Benefit Fund," said Rob Skelton MP, Member for Nicklin.

You can get in contact with the Nicklin Electorate Office on 5406 4100 or at [nicklin@parliament.qld.gov.au](mailto:nicklin@parliament.qld.gov.au)




22 Coronation Ave, Nambour

Ph: 07 5343 8344

(Opposite the Nambour RSL)

Providing the right advice, the right product and best value for money in tyres and services while meeting budget and understanding your driving style.

OUR SERVICES [www.allcoasttyres.com.au](http://www.allcoasttyres.com.au)

Need legal advice about retirement living?

## David Wise Solicitor

Specialist advice for residents and prospective residents of retirement villages, over 50's resorts, and manufactured home parks, including entry, exit, dispute resolution, Wills, Powers of Attorney and Estates.



0412 254 080 | [principal@davidwisesolicitor.com.au](mailto:principal@davidwisesolicitor.com.au)  
[www.davidwisesolicitor.com.au](http://www.davidwisesolicitor.com.au)

MEMBER Queensland Law Society.

TYRE FITTING

Car, SUV & 4WD's

Mowers & Wheel Barrows

- Tyre Repairs
- Tyre Rotations
- Wheel Alignments
- Fleet Tyre Servicing & Management
- 24/7 Commercial Mobile Tyre Service

(All Tyre brands available)

Locally owned by John & Peter O'Leary



Ask us about our 25% off tyre deals!

Earthmoving • Cranes • Trucks • Hydraulics • Attachments



GR FLEET SERVICES

DIESEL MAINTENANCE & REPAIRS

We service and repair all makes of earthmoving machinery, cranes and trucks.

From Warranty Servicing to hydraulic hose repairs we have you covered.

FULLY EQUIPPED WORKSHOP + FIELD SERVICE

Authorised Dealers







169 Nicklin Road, Palmwoods • 5457 3066 • [grfleet.com.au](http://grfleet.com.au) •



# SPAR



# WOOMBYE

## Market Specials



**\$2.50**  
EA.

Kensington Pride Mangoes



**\$3**  
EA.

Onions 1Kg Bag \$3 per kg



**\$4.25**  
KG.

Pink Lady Apples



**\$2.75**  
EA.

Broccolini Bunch



**\$2**  
EA.

Cherry Tomatoes  
250gm Punnet \$8 per kg

### LOW PRICES ALL DAY EVERY DAY



**PAYLESS EVERYDAY**  
**\$10.95**  
kg.

Chicken Roll



**PAYLESS EVERYDAY**  
**\$20**  
kg.

Silverside



**PAYLESS EVERYDAY**  
**\$19.50**  
kg.

Tibaldi Triple Smoked  
Gypsy Ham

SCAN TO SUBSCRIBE TO OUR LATEST WEEKLY CATALOGUE STRAIGHT TO YOUR INBOX!

Specials available Wednesday 16th November until Tuesday 22nd November 2022



## WOOMBYE

20 BLACKALL ST

## OPEN 7 DAYS!

PH: 5413 8007



Specials available while stocks last. Limit rights reserved. We reserve the right to correct any printing errors and omissions.





The two champs at the private golf course located at 15 Gibbs Court Diddilbah, the home of GPAAI & Special Olympics Australia's affiliate golf program.

## Stars align on golf course to help drive inclusion

NAMBOUR charity 'Golf Programs Australia Incorporated (GPAI)' was delighted to welcome Great Britain's 2019 World Games Special Olympics Gold Medalist Andrew Stuart to its golf program last Tuesday.

Andrew impressed GPAI's intellectually disabled golfers by sharing his story of competing in the Special Olympics World Games hosted at Abu Dhabi in 2019 where he won gold for golf in his division.

Amid the gasps of amazement, Andrew produced his prize and proudly showcased his rare medal for all to touch and see.

Stuart's visit was timely as GPAI's Sebastian McCormick had recently returned from competing in the Special Olympics Australia National Games in Tasmania where he had secured the Bronze Medal in golf for his division.

When GPAI reached out to Sebastian's dad Bryan informing him there was an opportunity to meet Great Britain's World Games Gold Medalist in golf, arrangements were made to facilitate the get together which was just amazing for the medalists, families and Seb's PGA Golf Coach Darrell Dalton.

"For these two young men to meet and showcase their respective Special Olympics medals in golf it was just too great an opportunity to pass up," said Darrell.

The Stuart family chose to stay at the Gibbs Farm location on their short vacation from Scotland as it had cabin accommodation and a private 9 hole golf course.

Sebastian will continue in his quest to reach his full potential in golf and perhaps one day in the future at another World Games the two Special Olympics golfers will reminisce about their fortuitous meeting on the Sunshine Coast in November 2022.

"Our mission to drive inclusion & break isolation through the low-impact activity of golf is embodied in Andrew & Sebastian's story and it's empowering to witness the courage, growth and resilience of these passionate athletes," said GPAI President & PGA Professional Darrell Dalton.

► Learn more about Golf Programs Australia Incorporated by visiting [www.gpai.org.au](http://www.gpai.org.au) or [www.pitchin.golf](http://www.pitchin.golf).

## Neighbours launch petition about Maleny-Kenilworth Rd

MALENY neighbours Tony Hartley and Dennis Hensby have organised a petition to Queensland Parliament calling for road widening, sight line improvements and vegetation management along Maleny-Kenilworth Rd, between Maleny and Witta.

"Apparently any such petition needs a decent number of signatures to get any attention at all in Parliament," said Dennis.

"Glass House MP Andrew Powell wishes to close and present the petition in Parliament on about 27 November 2022, so we have only a few more weeks to increase the number of signatures substantially."

The petition says local population growth and increasing tourism have increased demands on the old road infrastructure.

It says there has been minimal road maintenance in the area. Heavy vehicle numbers have increased due to population increases and related building activity. This has advanced the deterioration of the road structure.

The petition describes the road surface as narrow with blind spots and sight line obstructions on corners, aggravated by the lack of frequent roadside vegetation management especially in the spring and summer growing season. In places (e.g. Fleiter Hill) the narrow

road has very deep, steep and dangerous drains adjacent to the seal, with barely enough width for large trucks passing in the opposite direction. Some intersections (e.g. Maleny-Kenilworth Road/Witta Road, Maleny-Kenilworth Road/Curramore Road) have insufficient sight distances to be able to exit safely.

Mr Powell said he'd been pushing for upgrades along the entire length of the Maleny-Kenilworth Road "since day one" as Member for Glass House.

"I'm holding my breath that the worst section - at Cambroom - should see a full upgrade start soon with funding in this year's budget.

"But the section between Maleny and Witta is in desperate need of attention too. The lanes are narrow. In many places there are significant and dangerous drop offs. There are pot-holes, and in some sections the road surface is simply peeling away. And a number of intersections need safety improvements."

► The petition is at [www.tinyurl.com/petition3819](http://www.tinyurl.com/petition3819) or go to [www.parliament.qld.gov.au/Work-of-the-Assembly/petitions/petition-details?id=3819](http://www.parliament.qld.gov.au/Work-of-the-Assembly/petitions/petition-details?id=3819) or search for "qld petitions", select "Current E-petitions" then scan down to 3819-22.

## Zonta Business Directory 2023

THE Zonta Club of Blackall Range's Directory has been published since 2008 and has grown greatly over the years to now incorporate Palmwoods and Woombye.

The club is now taking advertisers for the 2023 edition and Zonta's Sue Irwin will be more than happy to help with advertising design and set up for those who need it. The Directory is the club's main source of income which enables them to support many local projects.

► To advertise, Sue Irwin can be contacted on 5499 9899 or by emailing [directory@zontablackallrange.org.au](mailto:directory@zontablackallrange.org.au).

## Sculpture on the Edge will open to community soon

THE 12th annual Sculpture on the Edge, hosted by Arts Connect Inc will be on exhibition at Flaxton Gardens.

You can view more than 80 pieces while taking in breathtaking views from the magnificent Flaxton Gardens.

► The free exhibition is open to the community every day from November 20 to December 4 between 9am and 3pm.





# Sculpture

## ON THE EDGE




**The exhibition is FREE and open to the public from 20 November – 04 December, 2022 • 9.00am to 3pm daily**

Enjoy a pre ordered picnic box to experience in the grounds or dine in for two sittings per day

We have opened early bird pre paid sittings for our set dine in menu for individual bookings and tour groups.

We are also taking pre paid picnic pack bookings for tour and group bookings.

There will be a fabulous ARTS DINNER on the 26th of November which will be ticketed via Arts Connect and we will let you know the release date for that exclusive event.

FOR PRE BOOKINGS PLEASE CALL WEDNESDAY TO SUNDAY 5445 7450 to secure your booking.

DINE IN SCULPTURE MENU • PRE ORDER PICNIC HAMPER BOX  
VISIT [www.flaxtongardens.com.au/sculpture-on-the-edge/](http://www.flaxtongardens.com.au/sculpture-on-the-edge/)



WEDDINGS • EVENTS • CELEBRATIONS

07 5445 7450 | 313 Flaxton Drive, FLAXTON | [flaxtongardens.com.au](http://flaxtongardens.com.au)



☎ 07 5478 5802

☎ 0408 784 643

Shop 7, 3 Obi Obi Road  
MAPLETON

# Smile

## Restore Your Confidence with Denture Art




Before

After

Our Certified Swiss Denture Concept Clinician has spent 40 years restoring smiles and confidence. By combining experience, meticulous workmanship and the highest quality materials, we have been helping our happy clients to enjoy their lives again.

**We can help you with:**

- Full Dentures
- Partial Dentures
- Emergency Denture Repairs, also after hours and public holidays
- Dentures on Implants
- Relines

A dental referral is not required, so please make an appointment to discuss your denture issues with our caring team and experience the Denture Art difference. Direct private medical fund claims and DVA patients are welcome.

# www.dentureart.com.au



## What's On in the Hinterland

Local Sport, Events and Entertainment coming up. Preference given to local events of widespread interest. Please check details with organisers. Submissions to editor@sunshinevalleygazette.com.au.

### MARKETS

- First Thursday of the month: **Compass Institute mini-market.** Fresh Produce, Food, Gifts and more in C-Square, Nambour from 9am.
- **Nambour Rummagers Market** Every Second Month, Sunday 9am to 1pm at Nambour Tram Co, 28 Mill Street, Nambour. Handmade, pre loved and vintage treasures. rummage@NambourTram.com.au
- **Yandina Second Saturday Handmade and Vintage Market** from 8-noon every month at the Yandina School of Arts hall. Enquires: 0407 828 431.
- Every Saturday: **Yandina Country Market** from 6am to 12pm, North Street, Yandina.
- Every Saturday: **Kenilworth Country Markets** from 8am to 1:30pm at Kenilworth Town Park, Charles Street.
- Every Sunday: **Maleny Art, Craft and Collectables Markets** 8am to 2pm Maleny RSL.
- Fourth Saturday of the month: **Mapleton Country Markets** at Mapleton Hall, 8am-12noon. Phone Paula 0419 726 603 or email countrymarket.mapleton@gmail.com.
- Third Saturday of the month: **Witta Growers Markets**, 7.30am-12noon, 50+ stalls, enquiries: wittamarket@gmail.com

### EVENTS

- Until December 3: **Nambour State College Year 7-12 Art Exhibition** at the Old Ambo.
- Until November 15: Yandina Historic House **'Birds of Sunshine Coast Art Exhibition'**.
- Wednesday 16 November: Turn up for **QMusic Connect Workshop:** APRA, career planning 5.30pm-9pm at Peace Run Records and Agency, 14 Queen Street, Nambour.
- Thursday 17 November: Turn Up for **QMusic Connect Workshop:** Social media, digital marketing and collaboration 5.30pm-9pm at Peace Run Records and Agency, 14 Queen Street, Nambour.
- November 17: Nationally acclaimed sing-

er-songwriter **Emily Lubitz** (and band) at the Black Box Theatre. Tickets via Eventbrite 7pm for 7.30pm.

- Friday 18 November: **Turn Up Workshop:** Are You Grant Ready, 1pm-3.30pm at Peace Run Records and Agency, 14 Queen Street, Nambour.

- Friday 18 November: Turn Up To The Forecourt Live Music Showcase 4pm-8.30pm in The Council Forecourt, Bury St, Nambour.

- November 20 until December 4: **Sculpture on the Edge** free exhibition is open to the community every day from November 20 to December 4 between 9am and 3pm at Flaxton Gardens.

- Sunday November 20: **Family Fun Wellness Day** is on at 2pm through to 6pm at the Chi Hub, 54-56 Blackall Terrace.

- November 22: Popular **Australian economist** Gigi Foster (PhD), will be speaking at the Northshore Community Centre in Mudjimba. www.tickettailor.com/events/movingforward-sunshinecoast.

- November 23: **WCBA AGM**, Wednesday at 6pm at the Thrill Hill Waterslide.

- Thursday November 24: Sunshine Coast **Tracy Chapman Tribute Show** at Black Box Theatre, Nambour.

- Thursday to Sunday, November 24 to 27: **Maleny Arts and Crafts Group's Annual Christmas Fair** at the Maleny Community Centre. Tickets \$40 + booking fee and doors open 6.30pm for 7.15 start.

- November 26: 8am-1pm **Big Balcony Book Sale** at Woombye Community Library on Blackall St. Adult and children's titles for a gold coin or two.

- November 26: 8.30am to 12.30pm the Yandina Branch of the Queensland Country Women's Association (QCWA) are holding their **Christmas Craft Stall** in the QCWA Hall at 11 Stevens Street, Yandina.

- November 26: **Genealogy Sunshine Coast workshops** at their premises in Petrie Park Road, Nambour (opposite the swimming pool). 9.30am until noon and 1pm-3.30pm. Email genealogysc@gmail.com or phone 5329 2315.

- November 26 and 27: The **Blackall Range Woodies** are holding their annual Santa Shop at which a huge display of beautiful handmade woodcraft will be on sale to the public at very reasonable prices.

- Tuesday December 13: **WCBA Christmas Party** on at Sunshine & Sons from 5.30pm.

### A Choral Society Christmas

ADRIAN King, Conductor of Sunshine Coast Choral Society presents 'A Choral Society Christmas' on Sunday December 11 at 2 pm at his farewell performance with the Choir.



**Adrian King, Conductor.**

He will be joined by soloists: Fiona Simpson, Soprano; Andrew Burns, Baritone; Lincoln Scott, Tenor and accompanist Natasha Koch.

The Choir will be performing favourite Christmas Carols composed/arranged by John Rutter as well as encouraging the audience to participate. Adrian will then hand the baton to our new Conductor Lincoln Scott.

► If you would like to be part of this occasion, please book tickets through our web site www.suncoastchoral.org.au or phone Yvonne on 0431 550 713. Tickets: \$30; Concession \$25. The venue is Gregson & Weight Memorial Chapel, 159 Wises Road, Buderim. Refreshments served after the concert.

### Bushcarers set to plant trees and pull weeds

PETRIE Creek Bushcare will be doing more planting of the wetlands and some weed control again at their November event.

It's all part of their work towards creating local native plant habitat for the native animals.

Next opportunities to join us in these Bushcare events on Petrie Ck will be at

- Namba Creek on Saturday 19 November starting at 7am. (meet in The Model Railway Park off Florence St Nambour).

- Gulung Gung on Wednesday 23 November starting at 7am. You can park in NE part of Aldi Carpark in Howard St Nambour and walk down to the creek by following the rough track that skirts the north of the carpark. Alternatively walk across the new park from Quota Park off Matthew St.

To join in the activities at these events you'll need to come in "long everything" bush protective clothing including boots/shoes and a hat. All tools required will be provided.

► For more info see the FB Page "Petrie-CreekCatchmentCareGroupInc or www.sunshinecoast.qld.gov.au/bushcare or contact Norm Morwood 0409 63 99 44 or normmorwood@gmail.com.

### Annual Christmas Fair in Maleny from November 24

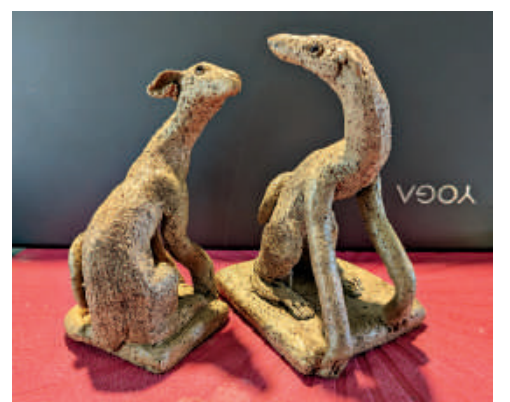
THE Maleny Arts and Crafts Group is holding its Annual Christmas Fair at the Maleny Community Centre from Thursday to Sunday, November 24 to 27.

"The Fair is a wonderful opportunity for visitors to browse amongst a huge range of beautifully crafted, and often unique products created by our talented members," said publicity officer June Godkin.

"There will be pottery and sculpture, quilting, creative glass, wood crafting, fine arts, textile and fibre arts, and so much more will be on sale.

"Visitors are likely to find a perfect gift for friends and relatives, or a personal item to enhance their home or garden.

"The first prize in the raffle this year is a beautiful lamp and nest of tables, and the second prize is a crocheted basket, which will be per-



fect for cold winter nights."

- The Fair opens on Thursday the 24th of November from 5 - 7pm, Friday the 25th, Saturday the 26th from 9am to 4pm, and Sunday the 27th from 9am to 3pm. The raffle will be drawn Sunday before closing at 3pm.

# Thank you Palmwoods!

Heritage Bank Palmwoods Community Branch is honoured to be an ongoing sponsor of The Compass Institute Annual Golf Day. Participating in this year's event were Palmwoods Community Branch Directors Craig Agnew and Alan Taylor, and their wives Megan and Rachael.



The Compass Institute Annual Golf Day is proudly supported by

**Heritage** | Palmwoods  
Community Branch

Visit your local community branch at Palmwoods Plaza or call 07 5294 0600



# Quality care continues despite global challenges

RANGECARE has continued to grow and enhance its reputation in the community, despite the impacts of Covid, floods and labour shortage challenges, its AGM was held on Friday.

Recently appointed Executive Director (and former Chief Executive Officer) Greg Mannion said RangeCare's national win at Leading Age Services Australia's 'Excellence in Age Services Award' was testament to the effort the team had applied during the pandemic.

"We lost staff and volunteers due to the vaccination mandate, have experienced enormous amounts of sick leave and mandatory isolation, we went through the floods in February and again in April, and have found it near impossible to recruit new staff for most of 2022," he said.

Despite the challenges, Mr Mannion said staff and volunteers had stepped up.

"We helped many people survive the pandemic and we are now continuing to do our best, despite the challenges.

"Our recent client survey shows our clients remain very satisfied with RangeCare, a feat many other businesses will not be able to record in 2022.

"Our people are incredible and are driven by one thing - making a difference to our clients. This includes our wonderful volunteers who selflessly provide their time to make our organization even stronger."

## Tight labour market

Chairperson Lenore Simpson said a tight labour market made recruiting new people very difficult.

"These issues have plagued most industries and businesses across Australia, but in true RangeCare style we have battled through and continued to deliver to our valued clients," she



Gary Holland is RangeCare's newly-appointed Chief Operating Officer.



Chairperson Lenore Simpson and Executive Director Greg Mannion.



Tony Brett, Nita Lester, Div 10 Cr David Law and Phillip Lester attended the AGM.

said. RangeCare also continued to focus on growth opportunities, which were critical to securing its future.

"Our activities in Gympie have expanded again this year, as have our development plans for Flaxton. We also continue to expand our footprint across the Sunshine Coast.

"Our industry is going through some major changes and we must be prepared as these changes occur.

"The recent Royal Commission into Aged Care continues to influence the industry, both in funding models and standards of care.

"Fortunately our work over the past few years has provided financial security which will be important as we navigate these changes."

## RangeCare Needs You

NEWLY-APPOINTED Chief Operating Officer Gary Holland said RangeCare was currently recruiting for a range of positions across their four locations.

"That's definitely a short-term focus for our team," he said.

"Our recruitment and our retention of the great staff that we have is crucial right now.

"I'm proud to be part of the organization because of the people that I work with — from our staff to the volunteers, including the board.

"The volunteers make a huge contribution to the organization and allow us to do that special work we do which most people would agree is above and beyond what maybe other organizations do."

▶ If you are interested in joining the RangeCare team and making a difference in your local community, call 07 5445 7044 or visit [www.rangecare.com.au](http://www.rangecare.com.au)



## Work in your community for the community!

RangeCare is seeking dedicated and passionate people to join our team!

### About Us

RangeCare is a local, not-for-profit in-home care provider that has been supporting people along the range and the Sunshine Coast since 1986.

RangeCare has offices in Flaxton Maleny, Nambour; and Gympie.



For more information about working for RangeCare visit [www.rangecare.com.au](http://www.rangecare.com.au) or call us on 07 5445 7044.

### Positions Available

#### Care Support Workers

Tasks vary each day and would include personal care, shopping, meal prep, in-home respite or transport to medical appointments.

#### Domestic Assistants

Tasks involve standard domestic cleaning tasks. No experience is required.

### Employee Benefits



**KM Reimbursements**  
Increase your income



**Salary Packaging**  
More money back into your pocket



**Training and Development**  
Become your best version







From left, Woombye Post Office's Mary Cassell, Linda Cassell and Dawn Hebblewhite from Lions. Mary is the new owner of the Woombye Post Office.

## Lions Christmas Cakes available now

NAMBOUR & District Lions Club have placed their famous Lions Christmas Cakes & Puddings at Woombye Post Office, Palmwoods Post Office, Brady's Fruit Shop, BOQ and a Chemist in Nambour as well as selling them in the Nambour Plaza.

Please support the drive and we are still looking for more outlets.

All money raised is given back to the Community. Gift Wrapping will start at Nambour Plaza first week in December, gold coin donation.

The Lions Club also accept used stamps and old stamps as they are used to sell and purchase Wheelchairs for Children.

We also accept used glasses which are cleaned and sent to overseas countries.

## WCBA AGM set for November 23, and there's pizza!

WOOMBYE Business and Community Association's next meeting will be the Annual General Meeting on Wednesday November 23 at 6pm at the Thrill Hill Waterslide Events Area (Undercover).

Pizza will be provided by Margarita Pizza.

The Chair will vacate and a call for nominations for each role from the floor. A nomination form has been circulated and the present committee welcomes all nominations for any of the positions. Only financial members can vote.

Current nominations received to date are as follows.

The president's position is currently vacant.

Other positions include Secretary Richard Law, re-nominating; Treasurer Nathan Major, re-nominating or as President; Vice President Grant Palethorpe, re-nominating; Social Media Officer Daniella Possee, re-nominating; Events/Membership Officer, vacant; Committee Members: Ken Hudson and Sarah Major - nominating.

The Executive encourages nominations to committee positions, it is a chance to become involved without taking on a full role.

Following the AGM the next WCBA Event will be a Christmas Party on Tuesday December 13 at Sunshine & Sons from 5.30pm.

## Session to provide overview of Voluntary Assisted Dying

AS part of Dying to Know Day (D2KD) this year, local community group Tying Up Loose Ends (TULE), together with the Uniting Church (Maleny) are hosting an information session on the Queensland Voluntary Assisted Dying Act 2021. Voluntary Assisted Dying (VAD) will be available in Queensland from 1 January 2023.

The VAD initiative "... gives eligible people diagnosed with a life-limiting condition, who are suffering intolerably and dying, an additional end-of-life choice by allowing them to choose the timing and circumstances of their death," with medical care and support.

In a relatively short period of time (a couple of generations or so) we have managed to shroud death from public discourse despite its inevitability. This event will be an opportunity to engage in some discussion about a taboo; a space in which to open a conversation specifi-

cally about choosing to die and the legal means to do so, safely and respectfully.

Information will be presented and conversations initiated via short plays. A panel of representatives VAD Unit Sunshine Coast, Rev John Stevenson (Chaplain Buderim Hospital, Rev Liena Hoffman (Uniting Church) Sharon Hirst - Personal Experience of VAD and Christine Elcoate TULE will convene to clarify the meaning of VAD and answer questions.

The event will be held on Saturday 19 November (3pm - 5pm) at the Maleny Uniting Church (1284 Landsborough Rd, Maleny). Afternoon tea will be provided.

Tickets are available (\$5) through [www.trybooking.com/CCWAW](http://www.trybooking.com/CCWAW). For more information please contact Fleur Adamson (TULE) 0409 470 822 or Rev. Liena Hoffman (Uniting Church) 0490 421 874.

## Maleny Players Presents 'The Magic Opal'

THE Maleny Players upcoming pantomime production 'The Magic Opal' will be performed at the Maleny Playhouse during the first weekend in December. Pantomime is a musical comedy stage play made for family entertainment. Originating in England, the panto is performed during Christmas and New year. Modern pantomimes are not just for children but also adults. In true traditional style the Maleny players bring you both songs, dialogues, and audience participation for you to enjoy. We look forward to seeing you.

Performances will be on Friday December 2nd 6.30pm; Saturday 4th 11am and 3pm Sunday 5th at 2pm at the Playhouse Maleny Showgrounds



Tickets: Adult \$25 Concession/Student \$15 Under 5yrs Free

► [www.trybooking.com/CDBIW](http://www.trybooking.com/CDBIW) or on the website at [www.malenyplayers.org](http://www.malenyplayers.org) Please phone Diane on 040387842 for further information.

# You're always welcome at our place!

At BOQ Nambour & Hinterland, we believe a great banking experience comes down to offering truly personal service. So if you've been affected by recent changes to your bank, visit our friendly team to see how we can assist with all of your banking needs. We're just around the corner!

Pop in and experience our truly personal service today!

**BOQ Nambour & Hinterland**

Matt Wall, Owner-Manager 0448 690 577 [matt.wall@boq.com.au](mailto:matt.wall@boq.com.au)  
5376 9999 [facebook.com/boqnambourhinterland](https://facebook.com/boqnambourhinterland) [boq.com.au](http://boq.com.au)

Bank of Queensland Limited ABN 32 009 656 740. AFSL and Australian Credit Licence No. 244616 (BOQ).







Maleny Dairies owners Sally & Ross Hopper ... "Our secret is what we don't do to our dairy products."

## Hinterland entrepreneurs taste success at Sunshine Coast Business Awards

HINTERLAND businesses shone bright at the Sunshine Coast Business Awards 2022 on Saturday night (November 12), as 132 finalists contested the 27th annual event.

Travis Schultz & Partners, Mooloolaba was crowned with the award, Sunshine Coast 2022 Business of the Year.

Other winners included the following hinterland businesses.

- Hall of Fame inductees: The Ginger Factory, Yandina.
- Accommodation (Tourism), Small Category: Narrows Escape Rainforest Retreat, Montville.
- Education and Training, Large Category: Wildings Forest School, Burnside.
- Food and Agribusiness, Large Category: Maleny Dairies, Maleny.
- Retail, Large Category: White's IGA, Bli Bli.



Nicki Farrell and Vicki Oliver encourage kids to climb trees, build rafts and explore the forest at their Wildings Forest School at Burnside.



Servals come alive, along with heaps of other nocturnal animals during the Night Zoo experience at Woombye's Wildlife HQ.

## Wildlife HQ launches 'night at the zoo' after-dark experience

WILDLIFE HQ is about to launch Night Zoo providing an unforgettable experience, where you can see some extraordinary animals 'in action' after dark.

"You can take a very special guided tour through our rainforest gardens seeing some of our nocturnal residents such as Tasmanian Devils, African Wild Dogs, Servals, Red Pandas, Binturong and Maned Wolf, who are most active after the sun goes down," said CEO Jarrod Schenke.

"We use environmentally sensitive lighting, allowing visitors a rare up-close opportunity of seeing these incredible animals' social habits and feeding behaviours — quite an incredible sight!"

"The Night Zoo will be the first of its kind on the Sunshine Coast. Spaces are very limited to ensure a personal experience for our guests. We are so excited for our visitors to see the zoo come alive after dark.

"It is an entirely different zoo. The monkeys

who are such a popular draw card during the day have all gone to sleep. And the carnivores come to life at night.

"Our keepers will feed the African Painted dogs and Tasmanian devils. And visitors will be able to see these incredible animals showing off their natural group feeding behaviours.

"We are very excited about offering something new for families to do on the Sunshine Coast at night. It's an adventure for all ages and with the weather warming up it's a great way to get outside and experience nature and learn about wildlife conservation."

► Night Zoo will launch on November 18 and run every Friday and Saturday evening from 6.30pm. Spaces are strictly limited to 25 people per tour to ensure an intimate and personal experience. Pre-booking is essential by emailing [info@whqzoo.com](mailto:info@whqzoo.com). Tours are expected to book out and will run for a limited season only.

## INITIATE TRUE WELL-BEING

The very foundation of Sacred Body is the understanding that we are all gorgeous divine beings that deserve to honour, respect and nurture our vehicle of expression, our body, through loving rituals and rhythms of self-care and self-love.

Relax Re-Connect Rejuvenate



- Massage
- Far Infrared Sauna
- Waxing
- Lash & Brow Tinting
- Chakrapuncture
- Couples Massage
- Private Mineral Bath

SACRED  
*Body*

0419 175 425  
[sacredbody.com.au](http://sacredbody.com.au) | f @  
4/130 MAIN STREET MONTVILLE

# Brady's Fruit

FRUIT & VEGETABLE SPECIALIST  
• Wholesale & Retail •

Col & Sandy Pearce  
**Ph/Fax 07 5445 9260**

*Park at your leisure where shopping is a pleasure*

Woombye-Palmwoods Rd.  
Palmwoods, Q. 4555

# BIG BALCONY BOOK SALE

**SATURDAY 26TH NOVEMBER 8am - 1pm**

Adult and Children's titles for a gold coin or two.  
*All the proceeds of the sale will go towards purchasing new titles for the library.*

**Woombye Community Library Inc.**  
07 5442 2250 | [www.woombyecommunitylibrary.org](http://www.woombyecommunitylibrary.org)

**1-3 Hill Street Woombye**





Cathy Kunde, Sharon Tilly and Kate Edwards (Vice President) at last year's Christmas Craft Stall.

## Lovingly-made items for sale at QCWA Christmas Craft Stall

IT'S the thought that goes into every piece that makes all the difference.

On Saturday November 26 from 8.30am to 12.30pm the Yandina Branch of the Queensland Country Women's Association (QCWA) are holding their Christmas Craft Stall in the QCWA Hall at 11 Stevens Street, Yandina.

The ladies have been busy making craft items including topped tea towels, crocheted rugs, a variety of bags, knitted tea cosies, toys and Christmas ornaments.

There will also be baked goodies like short-

bread and preserves (jams, chutneys, pickles and relishes) available for purchase along with potted plants.

Members of the community are invited to come along and purchase these high-quality, lovingly made items as gifts or to treat themselves.

Funds raised from the stall will allow the branch to continue to support others in need including members of the local community, like school children and those impacted by domestic violence or financial hardship.

## Reaching new heights in fundraising for Parkinson's

TO raise awareness for Young Onset Parkinson's Disease a group of energetic climbers last year completed 42 laps of Mt Cooloom in five days. They climbed a total of 8848m, the height of Mt Everest, and raised awareness and much needed funds for Australian research for Parkinson's Disease.

And they're doing it again. "Fast forward to 2022 and once again we have team members who work and live in Nambour, work at the Nambour General Hospital and are an integral part of our growing community of fundraisers," said Gary McKitterick Gillett who organises the fundraising adventures and is a clinical assistant at Nambour Hospital.

One of the Nambour Hospital employees, assistant kiosk manager Jaiden Dennis, is helping to raise awareness and funds for Young Onset Parkinson's Disease by taking up the 42-lap challenge.

Jaiden will accumulate 8846 metres to support Shake It Up Australia and Young Onset Parkinson's Disease," said Gary.

"Twenty percent of all sufferers are diagnosed under 50 years of age," he said. "Michael J Fox was diagnosed at just 29. Trek for Parkinson's is all about helping to find a cure by supporting Shake It Up Australia, who fund Australian research to help find a cure. We are getting closer, but need more help."

Jaiden said 100 percent of all donations and funds raised would go to Shake It Up Australia.

"My efforts are to help make a small difference to the lives of young people who develop Young Onset Parkinson's Disease. Being a part of a community of fundraisers is something special," she said.

• For more information or to donate contact



Nambour General Hospital employees Gary McKitterick Gillett and Jaiden Dennis on one of their fund-raising climbs.

Gary McKitterick Gillett at Trek Ready Himalayas trekreadyhimalayas@gmail.com or 0409 573 951 or www.our-fundraisers.raisely.com/jaidene-dennis

## Now Showing at Majestic Cinemas

Here's what's showing now at Majestic Cinemas in Nambour.

Now Showing: Black Panther Wakanda Forever; Black Adam; The Woman King; Ladies of Steel (Norwegian Film); Everything in Between

and from November 17 Nutcracker and the Magic Flute and She Said.

• For more information on session times please visit [www.majesticcinemas.com.au](http://www.majesticcinemas.com.au) or phone 5441 2954.

**NAMBOUR NEWS & CASKET**

**WE FIX MOBILE PHONES**

- Stationery
- Magazines
- Lotto & Instant Scratch Tickets
- Newspapers
- Gifts

We can home deliver your newspapers and magazines and we are also agents for Cartridge World.

Shop 28, 52-54 Currie St, Nambour  
P: 5441 2029 | @NambourNews

**AUTOELECTRICS QLD**

**& Mechanical**

- Air Conditioning
- Mechanical Repairs
- Auto Electrics
- Log Book Servicing

227 Nambour Connection Rd, Woombye  
[autoelectricssql.com.au](http://autoelectricssql.com.au) **5442 2278**

**MORNINGSTAR DIGITAL**

**YOUR LOCAL WEB DEVELOPER**

Mention this ad for a locals discount

**1300 392 542**  
 lvl 1 / 65 Currie St, Nambour 4560  
[www.morningstardigital.com.au](http://www.morningstardigital.com.au)

**HAPPY HEALTHY SMILES**

**\$199\***  
welcome offer

**Blackall Terrace Dental NAMBOUR**

**New patient welcome offer**  
TOTAL COST: \$199\*

- Comprehensive exam
- Oral cancer screening
- Intraoral photography
- All necessary x-rays
- Scaling & polishing
- Topical fluoride
- Treatment planning

Call to book or go online  
**(07) 5441 3583**  
[blackallterrace.com.au](http://blackallterrace.com.au)

Scan to book your next visit.

ACCREDITED HICAPS ADA HCF PREFERRED PROVIDERS





The iconic Bayards store, pictured here in the 1930s (photo: Nambour Museum).

## When shopping at Bayards was a pleasure

Moments in Time from Nambour Museum

THE iconic Bayards store opened in Nambour thanks to Herb Stollznow who had lost his own business in the depression and became a commercial traveler.

He persuaded Harry Bayard that Nambour was an ideal place to expand his Brisbane business.

So on Tuesday 16 May 1921, Bayards took over three shops in the Town Hall buildings near the railway station.

In the 1930s, Bayards moved into the Kearns & Hocking building, "an imposing structure with a width of 36 feet to Currie Street and 55 feet to Howard Street".

It became Nambour's most popular and well-known store with merchandise of every description.

Bayards Store was sadly missed when it was forced to close in 1982. Bayards Corner was a well-known landmark and meeting place.

Older Nambour residents still refer to Bayards Corner and remember Saturday nights with the Salvation Army band entertaining the crowd.

"So many people still remember Bayards - someone on facebook remembered that it had a fairy floss machine downstairs every



Christmas," a museum spokesperson said last week.

"I wonder if the current Nambour Book Exchange was part of Bayard's downstairs area. The Ambulance men used to stand outside with their big Christmas stocking raffle (they had to earn money towards their own pay!). I don't know what it was called, but the shop had those wires overhead that sent docket and payments to the cashier's office and then returned them to the shop assistant. Whalleys' store also had this.

"For many years, the saying was 'Meet you at Bayards Corner'. People still say to me that they miss Bayards."

## Dentist specialises in surgery, without the pain of the past

Business Writeup: Woombye Dental

AFTER spending 12 months in a busy dental practice in Hervey Bay Woombye Dental's Dr Lewis Fang moved to Woombye to join the team and be closer to his family.

"Woombye is a great place to live and work and we have wonderful patients at our practice," said Dr Lewis who completed his Graduate Diploma of Dentistry at Griffith University.

Although Dr Lewis has experience and provides excellent care across all areas of dentistry, he particularly enjoys the more technical aspects of his profession, including oral surgery and root canal treatments.

"This is a special interest of mine and I often find that other dentists refer their patients to me for root canal work," Dr Lewis said.

"I also do quite a lot of extractions and emergency work where my patients are in a lot of pain. It is so important to regularly see a dentist and nip any potential problems in the bud before they become bigger and cause serious problems."

Many people, particularly of the older generations, are anxious about dental visits but as Dr Lewis explained, dental techniques and practices have become far more sophisticated over the years, especially when it comes to pain management.

"In the end, having gentle hands is incredibly important," he explained.

"If you approach your patients gently and respectfully, they are more inclined to relax. These days, dentists understand that it is imperative for our patients' comfort that we



Dr Lewis says dental techniques and practices have become far more sophisticated over the years, especially when it comes to pain management.

are very gentle.

"That is one of the aspects of working at Woombye Dental that I really enjoy; working alongside like minded professionals. Everything about our clinic has been designed to put our patients of all ages at ease, and to deliver them the best care and dental health management."

► Woombye Dental is at 31 Blackall St, Woombye. Phone 5442 2136.

The cost of living is going up - but not the cost of your dentistry at Woombye Dental

**Comprehensive Exam, Scale & Clean, incl X-rays\***

STILL JUST

**NO GAP**

OR **\$149** \*As Required



**WOOMBYE DENTAL**

The way dentistry is supposed to be™



07 5442 2136

31 Blackall Street Woombye QLD 4559

www.woombyedental.com.au





Jody Chatillon, Julie Smedley and Elissa Wake.



Renee from PCYC Nambour with Rebecca Lloyd.



Tanya Outridge from the *Sunshine Valley Gazette*, LiFT Nambour's Paul Murray, Lachlan Curnow from IT Resolve and LiFT Nambour's Wendy Versluis.



From left, Rebecca Lloyd from the evening's sponsors, Ken Mills Toyota, Musician Stu White, Brian Bugenhagen and Mark Bray.



Musician and local Pastor Stu White.

## Chamber AGM, music and drinks goes down well at Nambour RSL

ON Thursday November 10 the Nambour Chamber of Commerce held its AGM in conjunction with its free networking event, Drinks@5 at the Nambour RSL Zinc Bar.

"These regular networking events are a lot of fun, where our members can enjoy delicious nibbles, great company and the opportunity to connect and reconnect with like minded business professionals," said Chamber President, Mark Bray.

At each event, new members are invited to introduce themselves and their business to the group.

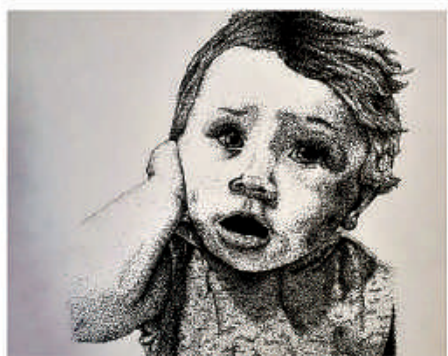
Entertainment was supplied by local musician Stu White and the event was sponsored by Ken Mills Toyota.



From left, BOQ mobile lending specialist Rowan Clemitson, Greg Butcher, Nambour RSL's April Simpson and Cheryl Butcher.

## ART EXHIBITION

NAMBOUR STATE COLLEGE YEAR 7-12  
 THE OLD AMBULANCE STATION  
 10 NOV TO 3 DEC 2022  
 OPENING NIGHT STARTS 4:30PM 10 NOV 2022



Artwork by Chloe Year 9



Div 10 Cr David Law and Brian Bugenhagen from the Chamber.

**ELITE FOOT CARE**  
 Podiatry • Orthotics • Footwear

**Online Bookings Available**

Call Elite Foot Care on **5328 3588** to book your appointment



For online bookings  
[www.elitefootcare.com.au](http://www.elitefootcare.com.au)

**DO YOU HAVE FOOT AND LEG PAIN?**

Call **5328 3588**

• Private Health Rebates • Medicare Rebates  
 • DVA Registered • NDIS • Workcover  
 • Home Care Packages • No Referral Needed

The team at Elite Foot Care can treat:

- Ingrown Nails
- Corns & Callus
- Heel Pain
- Achilles Pain
- Shin Splints
- Arthritis
- Knee & Hip Pain
- Lower Back Pain
- Kids Podiatry
- Diabetic Assessment

4/40 Wilson Avenue, Woombye  
 Corner of Blackall Street and Nambour Connection Road

OPEN HOURS: Mon-Fri 8:30am – 5pm [www.elitefootcare.com.au](http://www.elitefootcare.com.au)

### Printing your Pictures or Drawings

onto Ceramic Mugs & Tiles  
 Polyester & Cotton Polyester Fabric

**Photos Printed**  
 on a variety of photo paper up to A3+

**Photos Restoration**



**Hanks Studio Mapleton**

[cwade1@bigpond.net.au](mailto:cwade1@bigpond.net.au) 0400 262 214

Also available on Facebook Marketplace

### FRIDELLE STANYER



ANIMAL WHISPERER  
 INTUITIVE LIFE COACH  
 REIKI MASTER  
 CLAIRVOYANT READER

Never trust your fears they don't know your strength

Athena Singh

FRIDELLE STANYER

0412 846 995

[fridelle@innerharmony.net.au](mailto:fridelle@innerharmony.net.au)



# Wabi Sabi offers gifts that keep on giving

WABI Sabi Creations is a Compass social enterprise located in the heart of Nambour at C-Square.

Wabi Sabi Creations sells hand-crafted pieces made with love, by many of the people with disabilities that attend one of the many Compass Campuses and offers shoppers a place to “purchase with purpose” for their Christmas gifts.

“Wabi Sabi has now been open for about 12 months and in that time, we have grown our offering to include items made on premise as well as from our many centres across the coast” said Team Leader, Tye Naismith.

Selling handmade goods ranging from one-off art pieces to homeware’s, gift cards, plants and more, including specially curated Christmas Hampers, the store has a wide range that offer the perfect gift for the ‘hard-to-buy for’ person in your life. The store was born out of a vision to showcase to the world the incredible talents that people with disabilities have.

Beyond the beautiful items available to purchase, shopping at Wabi

Sabi offers locals the chance to make their Christmas shopping mean more, as all proceeds from the store go back into Compass to further support their programs and provide more life changing opportunities for individuals living with a disability.

“At Compass we are about creating opportunities and this means that everything we do is with a goal to reinvest into our community and ourselves; developing our ability to support others to grow theirs.”

“We are tremendously proud of the products our trainees have made and we love being able to offer the public a unique selection of special pieces that hold the true meaning of Christmas in their creation,” Tye said.

Wabi Sabi is the perfect place to find that unique something to gift this Christmas and best of all shoppers can feel good as their Christmas dollar will be going to support and grow a great cause.

► Wabi Sabi is at C-Square, 52-64 Currie St, Nambour and open Mon-Fri 9am till 3pm. They will be trading up to the 23rd of December, 2022.



Tye Naismith: “We love being able to offer the public a unique selection of special pieces that hold the true meaning of Christmas in their creation”.

## Soon you may be able to get change for your wine & spirit bottles

QUEENSLAND’S popular “Containers for Change” program could soon be expanded to include glass wine and spirit bottles to ramp up recycling, and put money back into the pockets of diligent recyclers and charities.

Since its launch in 2018 more than 5.5 billion containers have been recycled through refund points and \$540 million in refunds issued.

“This is fantastic news for everyone involved in this program,” said Nambour’s Urban Depot owner, Jason Irwin. “This recycling initiative has stopped billions of containers from polluting our waterways and environment, contributed millions of dollars to local groups and supported more than 800 jobs at 359 facilities across Queensland,” he said.

“The uptake of this concept here in Nambour has been fantastic and it is growing in leaps and bounds.

“When more containers are eligible for refunds, it will make it so much easier for people to recycle.”

Containers for change currently accepts most aluminium, glass, plastic, steel and liquid paperboard beverage containers between 150ml and 3 litres. A review and public consultation will take place to confirm public support for including wine and spirit bottles in the program.

“It would be terrific to see this proposed expansion happen as soon as possible but I am also aware that a lot of work behind the scenes will need to take place to smoothly integrate it into the current program,” Mr Irwin said. Consultation is expected to launch in December and run through to February 2023.

## Compass calls for help to create a Nambour Christmas market buzz

THE Compass Institute is planning to bring the community together and create some festive cheer with a Christmas Market near their Wabi Sabi Gift shop in C-Square.

The Christmas Market will be held Thursday December 8 from 10am-1pm. It will represent a natural progression from the organisation’s monthly markets which have been growing steadily.

CEO David Dangerfield is calling for stallholders and organisations to get behind the initiative.

“We’ve had the monthly little stall

out front of Wabi Sabi and the goal has always been to try and use Christmas to engage with more community groups and potential stall holders.

“There’s no cost for people to come have a stall. And you don’t even have to be selling something. You may want to promote your group or organisation or a local business or sports club.

“And of course you may want to sell various products. We’re just hopeful of getting a dozen or so tables set up, and people selling some stuff.”

The market draws on offerings prepared by trainees at local Compass

facilities including fresh organic produce from Compass Farm at Hunchy.

It will also feature arts and crafts including woodwork, pottery, screen printing and paintings from Wabi Sabi and food from Connections Cafe (on Nambour Connection Road).

“We’ll put up some decorations, put some Christmas music on, and try and bring a little bit of joy into this space,” said David.

It is hoped next year it can become a fortnightly market, and perhaps then a weekly event with a range of crafts, goods and fresh produce to draw

people back in to Nambour again.

“It should be a lot of fun and there will be some great fresh produce and I encourage everyone to come and we hope it will help kickstart a larger regular market where other stall holders come join us every time.”

► Compass is looking for individuals, businesses and organisations to join them for the December 6 markets from 10am-1pm. Phone 5445 9116 or email [tye@compassinc.org.au](mailto:tye@compassinc.org.au) for an information pack or drop in and see Tye Naismith at Wabi Sabi in Currie Street.

# GIVE GIFTS THAT CHANGE LIVES THIS CHRISTMAS!

Monday to Friday, 9am - 3pm  
C-Square, 64 Currie St, Nambour QLD

Make your Christmas gifting even more meaningful this year by shopping at Wabi Sabi Nambour - a Compass Social Enterprise that supports individuals with a disability to thrive!

You will discover unique hand-made pieces that are made with LOVE and perfect for any special someone in your life. Every gift purchased directly supports over 160 local individuals with a disability to learn, grow and continue to craft a life they are proud of.



WABI SABI  
CREATIONS

A COMPASS SOCIAL ENTERPRISE

To find out more: [compassinc.org.au](https://compassinc.org.au) ☎ (07) 5445 9116



## Palmwoods Pavement Project Launch



**Jenny Mackay provided some very entertaining reminders of the old days in Palmwoods.**

GENEALOGY Sunshine Coast had a very successful book launch of our new book on the Palmwoods Pavement Project with over 60 people present on the morning.

Jenny Mackay provided some very entertaining reminders of old days in Palmwoods along with many from other members of the audience.

We have a number of other books for sale relating to the history of the area. For more details see sites. [google.com/site/genealogysunshine-coastinc/Home/gsc-publications](http://google.com/site/genealogysunshine-coastinc/Home/gsc-publications)

In other news we will be closed from 10th December until 12th January 2023. Wishing all our members and friends a very Merry Christmas

and a Happy New Year.

### Genealogy Workshops

GENEALOGY Sunshine Coast will be holding workshops on November 26 at their premises in Petrie Park Road, Nambour (opposite the swimming pool). The workshops consist of Roots Magic 8 and Familysearch from 9.30am till 12 noon and Trove from 1pm-3.30pm. Come along and search for your missing relatives and increase your skills using the latest technology. \$8 per workshop or \$15 for both. Book in by email to [genealogysc@gmail.com](mailto:genealogysc@gmail.com) or phone 5329 2315. Lunch and morning tea will be available to purchase.

## Spring into shape with Healthy Sunshine Coast

REGISTRATIONS are now open for Sunshine Coast residents to hop, skip and jump into a variety of activities on offer when Healthy Sunshine Coast kicks off shortly.

Now in its sixth year, Healthy Sunshine Coast is an affordable and holistic health and wellbeing program focusing on moving well, eating well, sleeping well, thinking well and connecting well with others.

The program aims to encourage: positive mental health

and resilience; regular physical activity; healthy eating; strong social connections; participation across all ages and abilities.

Once people have completed this one-off registration, they will be able to join in the range of low-cost activities on offer once finalised.

Activities will be added over time, so ensure you are registered to be kept up-to-date.

For more information, visit Council website.



Talitha Tranent welcomes the incoming year 7 students.

## Students taste 'College life' at Immersion Day

ON Wednesday November 9 Nambour State College welcomed over 60 students from a number of hinterland primary schools to their campus as part of their final Year 6 Young Pinnacle Immersion Day.

"The day provides our incoming Middle School students with the opportunity to form connections with students from other primary schools who will be joining them at NSC next year," said Acting Junior Secondary Head of Department, Talitha Tranent.

"The early transition program has also allowed them to become familiar with the senior school campus and key teachers and staff for 2023.

"It is a wonderful introduction to the school and it makes for a smoother transition from primary to secondary school."

Students engaged with an array of fun and exciting activities targeted at their passion area. Some of the activities ranged from being innovators in the kitchen, to investigative journalism, as change makers, and to

being scholars running experiments in the lab.

"The students were treated to a BBQ lunch and enjoyed live music performed by two of our amazing NACA students," Ms Tranent said.

NSC offers a comprehensive range of educational offerings and experiences and the Young Pinnacle Immersion Day allowed students to innovate in the kitchen and then in the design room, working on a fashion proposal, the Athletes to play volleyball in the Thunderdome, Cultivators visited the farm and interacted with the animals while the Scholars completed science experiments in the lab.

Creatives were shown new watercolour techniques and the Change Makers were investigative journalists who investigated the water and soil quality of a local river.

"It is always an extremely busy day but so rewarding for everyone involved and so important for our incoming students to get a little taste of life at NSC," said Ms Tranent.



## Show features over 100 pieces of student artwork

NAMBOUR State College has a thriving Visual Art department and is currently exhibiting over 100 pieces of artwork from secondary students at its Annual Exhibition at the Old Ambo.

Art pieces include painting, drawing, printmaking, photography, ceramics and installation.

Head of the Arts Department Liz Clout said students worked across a range of concepts all year and staff were proud to showcase their talent.

Entries for Creative Generation Excellence in Visual Art are also on view at this exhibition. "We have two Year 10 students that have been selected for a Creative Generation Excellence in Visual Art residency at GOMA next month," she said.

"We opened the exhibition on Thursday (November 10) with performances from our NACA program. The night was called TALENT22 and featured two plays."

The exhibition is showcasing student talent from Year 7-12 Visual Art and Certificate I and III in Visual Arts until 3 December. Open Monday to Saturday 10am-3pm at the Old Ambo.

# QUALITY RELOCATABLE HOMES

Proudly a part of the QHR Group

## 2 x 1 bedroom

## 2 x 2 bedroom

READY TO DELIVER

Quality Homes for Lifestyle or Investment

# AVAILABLE NOW

07 5499 2160 | [www.wrightchoicehomes.com.au](http://www.wrightchoicehomes.com.au) | [enquiries@wrightchoicehomes.com.au](mailto:enquiries@wrightchoicehomes.com.au)





From left, Louise Tasker, Sharon Grimley, and Lynda Canning are three of the Wicked Sisters.

## De Groen's Wicked Sisters comes to the Sunny Coast

HOT on the heels of their successes at the Norfolk Island Theatre Festival (Best Original Script, Best Male Actor, and more), Buderim based 3bCreative are presenting Alma De Groen's Wicked Sisters for select Sunshine Coast audiences. First performed in 2002, this play with four strong female characters examines sisterhood, men, honesty - and artificial intelligence.

The flawed genius and social Darwinist Alex Hobbes has passed away, but his experiment in computer intelligence is still running in his study. His wife, Meridee, has withdrawn from life on their Blue Mountains property and spends her time tiptoeing around its presence, in much the same way as she dealt with his controlling personality when he was alive.

Her friends decide to visit and cheer her out of her depression. Solidarity seems a fine idea, but faced with uncomfortable truths, will these women support each other or use each other?

Although the man is gone, his presence is felt by all. The highly experienced cast, Liz Bear, Lynda Canning, Sharon Grimley, and Louise Tasker bring their characters to life with sharp wit and intense emotion.

3bCreative specialises in interesting and edgy plays at small venues, and Wicked Sisters is no exception. There will be only three performances, so bookings are essential. There is a "women only" event at the She Shed, Maroochydore on November 24; and general admissions at the Maleny Playhouse on Nov 25, and Tait Community College in Tewantin on Nov 26.

Go to [trybooking.com](http://trybooking.com) and search for Wicked Sisters or call 0400 570 880 and leave a message.



Cullen Shield 2022 winners were the Kawana Thunder team, from left, Marilyn Emerton, Jane Bush, Aileen Duckett, Judy Whaites, Brett Cullen (Dealer Principal, A. Cullen & Son), Lynda Brownen, Debbie Dalliston, Tony Bush and Billy Johnson.

## Nambour Bowls Club wraps up Cullen Shield

THE Cullen Shield, Nambour Bowls Club's annual interclub night bowls competition, proved popular again this year despite poor weather conditions.

Dating back to 1991, the event involves club sides of two teams of open fours participating in a round-robin style competition with finals contenders based on sectional results.

Nambour car dealership company A Cullen & Son has proudly sponsored the event for many years.

On finals night, Dealer Principal Brett Cullen was on hand to witness some of the keenly contested games and to present the major trophies.

He was impressed with the wonderful atmosphere and enjoyment expressed by all participants on the night and the long history of support for the event from other bowls clubs throughout the Sunshine Coast.

The competition was split into two sections with the top sides from each playing in the final.

Kawana Thunder and Maroochy Magic demonstrated why they had dominated their respective sections with a closely contested battle well into both games. However, Kawana Thunder gained the ascendancy in the concluding stages to capture the 2022 Cullen

Shield. Third place was secured by Coolum Beach with Palmwoods finishing in fourth place. Kawana Thunder player Lynda Brownen was voted the best player in the final to capture the Ken Ahlstrom Memorial Trophy.

As the Nambour Bowls Club's 90th anniversary year draws to a close, another successful Cullen Shield event is testimony of the inherent spirit and commitment of the Club and its members to serve and engage with the local community.

► New and experienced players are invited to 'Come and Try' lawn bowls at Nambour. Telephone 5441 1076 for more information.



## ENROL FOR 2023

Renowned programs, a purpose-built campus and outstanding teachers deliver a well rounded education at NCC. Separate Junior, Middle and Senior schools enable our P-12 co-educational College to equip your child with security, support and success.

VALUING WHAT MATTERS MOST  
[www.ncc.qld.edu.au](http://www.ncc.qld.edu.au)

2 McKenzie Road, Woombye QLD 4559  
Call us today 5451 3333  
[enrolments@ncc.qld.edu.au](mailto:enrolments@ncc.qld.edu.au)



# Freeze & Heat Meals

*Delivered to your doorstep every Friday!*

GF = Gluten free  
DF = Dairy free  
VEG = Vegetarian



## SPECIALS

### 17. Roast pumpkin, leek and parmesan risotto - GF VEG

Oven baked pumpkin, leek and rosemary, slow cooked in Arborio rice with white wine and parmesan cheese.

**Single Serve - \$10.00**

### 18. Quinoa spring vegetable minestrone - GF DF VEG

A protein rich tomato based soup made with quinoa, fresh veggies, hearty beans, fresh herbs & seasonings.

**Single Serve - \$7.00**



\*Specials available until 25.11.22\*

## MAIN MEALS

### 1. Marinated seed mustard and rosemary roast beef - GF DF

Served with roasted vegetables & gravy.

Single serve

\$10.00

### 2. Crispy skinned lemon and herb roast chicken - GF DF

Served with roasted vegetables & gravy.

\$10.00

### 3. Tender roast pork loin - GF DF

Served with apples, roasted vegetables & gravy.

\$10.00

### 4. Beef lasagne

Lean beef bolognese layered with bechamel, pasta & cheese.

\$10.00

### 5. Lamb rogan josh - GF DF

Mildly spiced tomato curry with aromatic spices, served with rice.

\$10.00

### 6. Braised beef and bacon casserole - GF DF

Slow cooked steak and bacon in a rich beef gravy, served with herbed buttered potatoes and seasonal vegetables.

\$10.00

### 7. Corned beef with fresh herb white sauce - GF

Served with steamed vegetables.

\$10.00

### 8. Cottage pie - GF

Lean beef & vegetables sautéed in gravy & baked with creamy mash potato & seasonal vegetables.

\$10.00

### 9. Malaysian satay chicken - GF DF

Mild creamy curry served with rice.

\$10.00

### 10. Stir fried chicken and hokkien noodles - DF

Stir fried in Asian sauce with peanuts.

\$10.00

### 11. Creamy coconut Indian veggie and chickpea curry - GF DF VEG

Mild, served with rice.

\$10.00

### 12. Vegetable fried rice - GF DF VEG

Sautéed Asian vegetables, tossed with soy sauce, rice, omelette and fried shallots.

\$10.00

### 13. Spinach and ricotta cannelloni pasta - VEG

With napoletana sauce, baked with cheese.

\$10.00

### 14. Creamy garlic prawns - GF

Australian prawns marinated in garlic and fresh herbs, sautéed in butter, white wine and cream, and finished with parmesan. Served with rice.

\$10.00

## SOUPS

### 15. Hearty beef, pearl barley and vegetable soup - DF

Tender beef cooked with aromatic vegetables, pearl barley and beans in a seasoned beef broth.

\$7.00

### 16. Cream of roasted sweet pumpkin soup - GF DF

A soup of roasted sweet pumpkin, sweet potato, sautéed onion celery & carrot & coconut cream.

\$7.00

## HOW TO ORDER

Call 07 5445 7044 OR order online via the link below:

<https://www.rangecare.com.au/freeze-and-heat-meals>

Minimum order of 5 meals and \$5 delivery fee applies to all orders.





## Major grants flow to community groups

**David Law**  
Division 10 Councillor  
david.law@sunshinecoast.qld.gov.au



In a major boost for local not-for-profit community groups, Sunshine Coast Council has announced \$593,562 will support 84 local projects in its latest Major Grants round.

The funding supports many projects including youth programs, creative and cultural events and facility upgrades.

I am delighted to see so many hard-working community groups in Nambour benefit from this funding to help them with their work:

- Australian Red Cross Society – Nambour Branch receiving \$3120 for a conference room TV and camera.
- Dignity Circle receiving \$6645 to develop a strategic plan, refine existing marketing collateral, create website and social media presence, and host launch event.
- ECOLaboration receiving \$10,000 for renovations to expand the functional areas within the facility.
- Lind Lane Theatre Inc. \$7485 to install a hearing loop, an assistive listening system that provides access to facilities for those who experience hearing loss and use a hearing aid.
- Nambour Tennis Club Incorporated receiving \$2000 for coaches and equipment to increase members and social play.
- Nambour & District Historical Museum Association Inc. \$7500 for a mural to preserve the memory of the former lift span tramway bridge across the Maroochy River.
- Nambour Cricket Club \$5000 for purchase of ball machine, balls, target stump, scoreboard and training bat to support affordable cricket for children.
- Nambour Heights Bowls Club Inc \$7000 to clean and repaint the exterior of the clubhouse.
- Sunshine Coast Agricultural Show Society \$7500 to upgrade website to be more interactive.
- Sunshine Coast Railway Modelers Society \$7130 for the construction of a scissor lift hoist to safely store locomotives.
- The Nambour Tramway Company \$15,000 to install lighting to the green event space.
- Wan'diny NAIDOC Committee receiving \$9000 to upskill key committee members in event planning by completing Event Planners Workshop Training.

## Sunshine Coast Business Awards

**Ted O'Brien**  
Federal Member for Fairfax  
ted.obrien.mp@aph.gov.au



Congratulations to the 32 winners of the 2022 Sunshine Coast Business Awards which were announced at the weekend. It was a pleasure to join over 850 attendees at the event to celebrate the success of our many businesses and not-for-profits here on the Sunshine Coast. It was fantastic to see businesses from across the Sunshine Coast represented.

Congratulations in particular to Travis Schultz & Partners for taking out the overall 'Business of the Year' award and The Food and Agribusiness Network (FAN) and Ginger Factory for being inducted to the 'Hall of Fame'.

### Remembrance Day

I was also delighted to have attended a local service on the Sunshine Coast for Remembrance Day last week.

I joined with all freedom-loving Australian patriots in remembering the men and women who have fought for our nation.

I thank all veterans for their service, along with current members of the Australian Defence Force.

### Sunshine Coast Visitors

It was a pleasure hosting Nambour students from OneSchool Global at Parliament House recently. The students were given a tour of Parliament House, learnt about the building's history and were taught how laws are made and changed in Australia. What a terrific bunch.

### Radical Laws Rushed In

Some of the most radical changes to Australia's workplace relations law were rammed through the House of Representatives last week.

Labor's industrial relations bill will have wide-ranging, adverse impacts on businesses across the country.

The Coalition and crossbench voiced concern about the new laws but the Albanese Labor government used its numbers to close down parliamentary debate and quash further review of the legislation. See my speech on this important issue at my website at [www.tedobrien.com.au](http://www.tedobrien.com.au)

## Woombye upgrade gathers momentum

**Winston Johnston**  
Division 5 Councillor  
Division5@sunshinecoast.qld.gov.au



As part of the Woombye Streetscape project, stormwater, electrical and footpath upgrades will take place until November 25, 2022 (weather dependent). The footpath area from the Hill and Blackall streets intersection, past the School of Arts Hall and Library and across the pub and bottle shop driveway (near Grounded Café) will be under construction.

Please continue to support our local business which will remain open during these works.

### Glenview Road Upgrade

In 2021 Council delivered Stages 3 and 4 of Glenview Road Upgrade projects and I'm pleased to say we are now starting works on Stage 5 upgrade on Glenview Road between Tolson and Old Gympie roads.

Stage 5 upgrade works include drainage structure extension, road reconstruction, widening of bitumen seal to 7metres, bitumen sealing of the bus stop bay and line marking.

This work will start the week beginning Monday, 21 November 2022 and are expected to be completed in January 2023, weather and site conditions dependant.

I appreciate the patience of residents and road users during the delivery of this work and look forward to improving the road for the local community.

There's also many roads across our division being resealed and sprayed in Witta, Curramore, North Maleny and Maleny. The works should be wrapped up by the end of the month. Please be patient and take it slow around road works for your safety and that of road workers.

### Citizen science opportunities

Our Sunshine Coast citizen science program is growing, and council is calling for your ideas.

So what is citizen science? It's when people volunteer their time to partner with researchers to increase scientific knowledge and collect data about their natural environment.

We already have some very successful scientific partnerships underway like bird counting at Mary Cairncross Scenic Reserve. Tell us your ideas via the NatureWatch survey at [haveyoursay.sunshinecoast.qld.gov.au](http://haveyoursay.sunshinecoast.qld.gov.au) before December 2.

## We'd appreciate your feedback via survey

**Andrew Powell**  
State Member for Glass House  
glass.house@parliament.qld.gov.au



I am working with a parliamentary intern from QUT who is researching political engagement and social media use in the Glass House electorate. If you have a spare five minutes, would you mind completing her survey? You can find it at [www.forms.gle/BUjX4SFkHjBA2bH7](http://www.forms.gle/BUjX4SFkHjBA2bH7).

### Citizenship Ceremonies

It's always hard to stop smiling after a Citizenship Ceremony. I try to attend as many Sunshine Coast Citizenship Ceremonies as I can when I'm not down at Parliament. I have a great respect for those who choose to become official citizens of our great country! Last week I attended a ceremony where Elimbah State School Prep/Year 1 teacher Jayne Leyland and her family, and nearly 300 other new Australians from 44 different nations, made the pledge to our country. Well done everyone!

### Maleny Dark Skies Update

Following up on the Maleny Dark Skies petition which ran earlier this year and gathered over 1000 signatures, I have written to the Minister for Education, Minister for Health and Minister for Police requesting small changes for the betterment of the community. I am seeking support from the Ministers to ensure that government buildings – the State School, the High School, Maleny Soldiers Memorial Hospital, the Emergency Services Complex and the Police Station are not contributing to light pollution with their outdoor lighting.

There are three simple rules to doing this:

1. Only use warm white lights with minimal blue content.
2. Ensure that all light is directed down and no light is directed above the horizontal.
3. Turn lights off when not needed and consider the use of motion detectors.

Maleny district and the adjoining Obi-Obi valley is the last location in coastal South East Queensland that is not yet severely affected by light pollution at night. It's imperative that we keep it that way by implementing these changes for the night sky and its nocturnal wildlife.

## Honouring the fallen on November 11

**Rob Skelton**  
State Member for Nicklin  
nicklin@parliament.qld.gov.au



The eleventh hour of the eleventh day of the eleventh month marks the end of fighting on the Western Front in November 1918.

We remember all those Australians who have served, and those men and women who have lost their lives in wars and peacekeeping operations since World War I.

Just as our veterans stepped up for us, we must step up for them.

We owe them a debt greater than mere gratitude.

Thank you to my staff for representing me at the Nambour RSL Sub-branch Remembrance Day service at Quota Park last week.

Lest We Forget.

### Metal Detector Wanding trial

The Palaszczuk Labor Government will be extending and expanding a nation-leading trial to detect weapons and combat violence in Queensland's Safe Night Precincts.

Queensland led the nation by implementing the Australian-first trial in May of last year, and was a resounding success, with almost 500 offenders charged and nearly 200 weapons being seized.

Following the success of this intervention, the Government is planning to expand the trial to the Sunshine Coast.

### Congratulations ECOLaboration

In partnership with the federal government, the Palaszczuk government is funding 26 projects in South – East Queensland to support disaster affected communities as they rebuild.

Displaced workers and local jobseekers will be supported in learning skills on the job as they help rebuild their communities.

This includes our local ECOLaboration who will be supported through our existing Skilling Queenslanders for Work program.

They'll be providing a business administration course for culturally and linguistically diverse job seekers.

This funding will also provide additional small business wellness coaches to provide free, confidential one on one support to small business owners.

## Cheeky the bush stone curlew bound for freedom

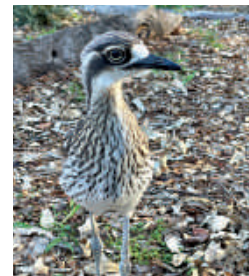
from **Donna Brennan** Wildlife Volunteers  
WILVOS 5441 6200 [www.wilvos.org.au](http://www.wilvos.org.au)

We never know what each day will bring when caring for wildlife. It could be a quiet day or it could be mayhem. Lately it's mainly been mayhem. But our volunteer hotliners, transporters and carers are doing a great job.

With all the volunteer hours put in by so many it was sad to hear of a fellow-wildlife carers car being stolen, trashed and the equipment taken.

William is a member of WILVOS and the founder of Wildlife Noosa. It's a long and continual process building up a careful of wildlife rescue equipment. To have it all stolen or destroyed so quickly and thoughtlessly is heartbreaking.

On a brighter note, a highlight of the week was taking Cheeky, the bush stone-curlew, pictured, off to the release site. Such elegant, beautiful birds that so rarely come into care. This year has been different.



A curlew was found in a Woombye back yard close to the town centre. Last week a curlew set itself up in the alcove of a shopfront in Currie Street, Nambour. Being nocturnal birds they are happy to relax anywhere during the day. Hopefully people and domestic pets stay away from them, as they need their rest! When evening arrives they are off on their way again foraging for food. All the birds are doing a great job at the moment, eating the garden insects along with playing in the bird baths.

The trees are full of nesting birds and the wind is a little strong for some. It is lovely to see the chicks reinstated in a manmade nest, with parents soon arriving to feed them. Often they have to be brought in overnight which is probably confusing for the parents when their young reappear early morning in a different nest. They are always observed to ensure they are being fed.

## Credit where it's due for Labor and LNP polities

by **Jeffrey Addison**, Sunshine Coast Commuter Advocate



On April 14, 2011 I joined the LNP. For the record my membership lapsed in 2015.

My rationale was to bolster the case for rail in the political background, as that was where I saw the true blockage.

I had determined that if I had to use politics to counter the politics of the day, I would do so.

I met a bloke by the name of Ted O'Brien.

He'd expressed interest in the information I'd gathered on the rail network, so I invited him to come to my place to explain the case for rail duplication to Nambour and why it was so important.

I clearly recall having laid out on our lounge room floor, all the newspaper reports and clippings, studies and Right to Information papers I had gathered, for the argument to pursue the 39km rail duplication to Nambour.

I had examined the freight case and the economic benefits it would bring to the state, from here up to Cairns.

The LNP state conference occurred from 15-18 July 2011. I was invited to attend and present a resolution to the conference to make rail duplication a priority.

Ted had helped me to word the resolution and lodge a submission to the party.

I had prepared a speech to go with the presentation in case one was needed (I found it in my records) – but it wasn't required on the day.

In 2011, Ted was Chairman of the LNP Futures Committee.

He would later go on to become the Federal member for Fairfax in 2016.

My resolution, number 27 on the list, was this:

'That this Convention of the LNP recommends that the next LNP State Government and/or the next Coalition Commonwealth Government adopts a policy to resume the rail duplication works for the North Coast Line (NCL) from Beerburrum to Nambour on the Sunshine Coast as a matter of high priority.'

To my delight, it was passed unanimously by the 700 delegates in attendance.

By May 2018, Ted and Andrew Wallace MP had secured \$390 million in funding (50%) for the \$780 million, 17km rail duplication from Beerburrum to Landsborough.

As I honoured Federal Minister Catherine King for keeping her word on the Maroochy-dore rail project, so I honour Ted O'Brien and Andrew Wallace, for their integrity in pursuing funding to get the rail project started in their very first term.

For me personally, where lies in politics are commonplace, it's refreshing to see integrity.

In June 2018, it prompted the state government to announce their \$160.8 million contribution to the project.

Since then the project has been cut back (staged) due to the Queensland state government refusing to pay half the cost - while at the same time arguing for an 80% contribution from the Federal government.

That is where it still stagnates today.

The alternative:

The state funds rail properly, as they proposed in 2009, to Landsborough and eventually Nambour - and puts an end to this ridiculous impasse that denies us an acceptable level of public transport.

## Yandina Country Music

YANDINA welcomes the vibrant Billy Guy as guest artist at the ACMA country music concert on Sunday 20th November starting 12 noon. Billy is a very popular entertainer who has great song variety guarantees enjoyment!

See you at the Hall of Fame, 24 Steggalls Road. Doors open 10.30 am. You'll enjoy popular country music and other upbeat, crowd-pleasing favourites with a great house band. Walk-ups welcome. Raffle and door prizes, byo lunch, free tea and coffee. Entry \$8.

► Enquiries 0437 191004.

## HATHA YOGA/ PILATES RELAXATION

Hatha Yoga Pilates is held at the Woombye Hall: Sat 9am & Wed 9.30am.

Beginners & Seniors welcome. Cost \$10. Call Christine: 5441 6285 (Cert. in Pilates matwork; Dip. IYTA: Yoga Instructor; USC Sport & Exercise minor: Ex. Prescrip. for Health & Rehab.)



# The story behind our local, friendly Woombye library

by Cathy Cash

I admit when I started volunteering at the Woombye Community Library last year I didn't really give much thought as to how new books arrived on the shelves. Did the book fairies visit in the night? Thankfully now I am a little more knowledgeable so I can share what really goes on behind the scenes to make our local community library function.

Firstly, we are entirely run by volunteers – 31 of us currently. Our team comprises people from many walks of life but all share a passion for reading and a sincere motivation to serve our community. We have our executive team made up of a convenor, secretary and treasurer and these are the people who put the wheels in motion. New volunteers need to be supported with training and ongoing communications.

Our rosterer has the daunting task of allocating volunteers across 44 shifts per month. This gets more and more challenging as many of us are travelling more frequently and for longer periods.

Funding is the big one.

Grant applications are made on a regular basis to obtain funding to run the service and purchase new items. Our main funding is a community partnership with Sunshine Coast Council which helps pay for our running costs like insurance, phone, internet and office supplies, and to buy new books and magazines.

The Council's discretionary fund also assisted us to replace books that were damaged as a result of the rain event early this year. We are also supported by the Bendigo Bank Woombye and the Sundale Foundation.

The Dept of Justice and Attorney General (via the Community Gambling Fund) provide

funding for us. Recently this enabled us to renew our reception furniture as well as continue to purchase new titles.

We have an adult book buyer and a children's book buyer who make selections to purchase each month. Books are selected across all genres with a focus on new release titles, also any books that are part of a series already held in the library.

The books purchased take into account authors that are popular with our borrowers and authors that have been recognised by receiving awards for their work. Non-fiction recent releases such as biographies and memoirs are also included on the list. Our book buyers ensure Australian authors are well represented on the shelves in both our adult and children's sections.

Once books arrive in the library either by purchase or community donation, they need to be catalogued in our system and contact covered before going into circulation.

As a result of concerted efforts by all our library volunteers and the financial support of our funding bodies we are proud to have over 5,000 items on our shelves and we currently provide service with a smile to 1,419 registered borrowers in the Sunshine Coast hinterland.

Thanks to those book fairies.

## Big Balcony Book Sale

Our bi-annual Big Balcony Book Sale is on again on Saturday 26 November from 8am to 1pm at the School of Arts Hall on Blackall St, Woombye. Come and grab some bargains for just a gold coin or two and help support the library. We'll be launching our popular Christmas hamper raffle too!

## Go Card Chaos is getting to everyone

The current situation with Go Card on Suncoast buses (now owned by Kinetic, a multinational corporation which owns a number of Australian Bus Companies) is a public relations fiasco with no consistent user policy.

It is causing confusion and inconvenience for Sunbus patrons. Firstly there are very few places to top up your Go Card other than railway stations and major bus transit centres.

Many newsagencies and service stations, which used to offer a Go Card top up service, no longer do. You can ring Translink to top up but if you're having credit card issues of any sort this can be tricky.

Secondly, while Translink is apparently phasing in a new smart ticketing system where one can tap on to pay a fare either directly with a credit card or mobile phone, there seems to be a lack of any clarity of policy regarding the use of Go Card.

Some drivers are very lenient allowing people to travel without Go Cards.

Some drivers get cranky. Other drivers are at least by now understanding when people run out of credit and need to find a top up service and kids travel all the time on Sunbus without Go Cards. Kids do need to be able to travel safely on buses.

However, recently I witnessed a driver aggressively abusing a teenage boy for travelling without a card and reducing the teenage boy to tears.

I can appreciate a driver issuing a stern warning but abuse by bus drivers is not okay.

As a parent I would have been very upset to see my child spoken to or treated that way.

So what's the answer here? Our local bus services are already subsidized by government, enabling bus services to run, regardless of passenger numbers. Is the answer for the bus company or Translink to adopt a 'kids travel free' policy?

Or does the responsibility for kids' travel costs and a duty of care to ensure their kids behave properly on public buses and in turn are treated properly by bus drivers still rest with their parents?

– Wendy Buss, Yandina

## Blanket CCTV coverage of CBD might help

It was suggested that firms contribute to the cost of police to frequently check the whole of Nambour CBD. Would it not be cheaper to saturate the area with CCTV? Then all movement and proof is captured on film, allowing police to be gainfully employed elsewhere.

– Name supplied



## Pinnacle on Maud reaches roof milestone

NAMBOUR'S 'Pinnacle on Maud' multi-story residential complex in Maud Street is nearing completion.

Salesperson Frenchy Devos from Amber Werchon Property said the project team wet the roof recently and was targeting an end of March 2023 construction completion date.

Then the site will have to go through two to three months of inspections and paperwork involving QFES, Council, Unity Water and the

State Government, all subject to inclement weather and labour shortage impacts.

"We're so happy that despite rain and COVID delays we have a roof on the project," said Frenchy.

"With 95 percent of the project sold we kept the best units for last."

► For sales details contact Frenchy Devos at frenchy@amberwerchon.com.au. More real estate news on following pages.



## Not to be confused with Indian Mynahs

**NATURE WATCH:** Noisy Miner (*Manorina melanocephala*). From Don McGluskey

NOISY Miners are common along the entire East Coast and into central parts as well as Tasmania. They are probably the best known Honeyeaters, feeding on insects and nectar.

The spelling seems to have been corrupted from Mynah to Miner. The theory is that with their black faces and yellow eyes they reminded early English settlers of coal miners. They live in colonies consisting largely of male birds and are aggressive towards intruders, particularly snakes and goannas.

Nests are flimsy structures usually built high up. The female is the only one who builds the nest but a number of males will feed the chicks which can be as many as four. These birds are not to be confused with the Indian or Common Mynah which is the "cane toad" of the avian

world. Indian Mynahs were first brought to Australia from Asia in 1867, supposedly to control insects in market gardens around Melbourne and in 1883 they were introduced into North Queensland's cane fields to control cane beetles. Both attempts were failures and now they infest the entire east coast.

Indian Mynas are territorial and highly aggressive birds that compete with and displace native wildlife for habitat areas. They take over tree hollows and plug up nest sites they are not using, forcing possums and birds out and ejecting nestlings and eggs from their nests. I have sighted these birds in the business precincts of Nambour and Woombye.

They are the best look-outs as they create an awful fuss if a snake or goanna shows up. They also give the Brush tail Possums a hard time when they build a daytime sleeping nest in the Eucalypts close by.

## Letters to the Editor

Do you have an opinion to share? A range of viewpoints leads to better debate and better outcomes. Submit your Letter to the Editor with your name and suburb to: editor@sunshinevalleygazette.com.au. Please understand there is a strict 300-words limit.

## Nambour a pleasant and friendly town

As a frequent visitor to Nambour, I have always found it a pleasant and friendly town and so was interested and perturbed about the front-page story calling for community police.

Sadly, there does seem to be an increase in homelessness, due to the impact of the COVID pandemic and other social issues. It was good to see Ian Black's understanding and positive approach to the problem when he said "... we have to have an understanding that they are part of society, and we need to try and help them somehow".

Local MP Rob Skelton says he is working with the Police Service, council and community members to protect and invest in Nambour.

The Palaszczuk government has increased funding for police services in this year's budget to a record \$2.9 billion.

As Mr Skelton says there is always more to be done, and hopefully as the government's investment in front line services flow through to where it is needed, and with more police on the beat, it will improve the situation in Nambour.

– Robyn Deane, Bli Bli

## In support of breakaway Hinterland shire

In regards to your front page Item "proposed breakaway Hinterland Shire", we have been advocating the same for some years.

Nambour and the hinterland in general have been neglected in favour of the coast. We are aware that when built the Council chambers were designed to go another three levels as needs arose. Why the blatant waste of rate-payers money.

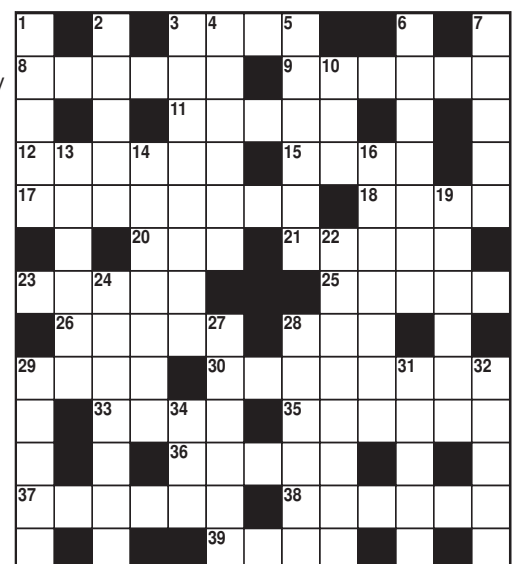
Having talked with numerous people we feel that a shire west of the highway would be the way to go. Trevor Thompson we support your thoughts, where do we go from here?

– Patrick & Dianne Egan, Mapleton

## Crossword

See solution page 26

- |                           |                            |
|---------------------------|----------------------------|
| <b>ACROSS</b>             | <b>DOWN</b>                |
| 3 Raised platform         | 1 Bobbin                   |
| 8 Appropriate             | 2 Wish for wrongfully      |
| 9 Traditional story       | 3 Beautify                 |
| 11 Tree                   | 4 Sports enclosures        |
| 12 NSW town               | 5 Reviews unsparingly      |
| 15 Biblical weed          | 6 Fault                    |
| 17 Able to read and write | 7 Embellish                |
| 18 Poet's Ireland         | 10 Period of time          |
| 20 Step                   | 13 Wine bar                |
| 21 Glossy fabric          | 14 Meals                   |
| 23 Ermine in summer coat  | 16 Withdrawn               |
| 25 Knighthood             | 19 Narrow passages         |
| 26 Step's vertical face   | 22 Reduces to a fine spray |
| 28 And not                | 24 Most unctuous           |
| 29 Young horse            | 27 Oppose                  |
| 30 Components             | 28 Most recent             |
| 33 Egyptian goddess       | 29 Pancake                 |
| 35 Most broad             | 31 Draws nigh              |
| 36 Quotes                 | 32 Condition               |
| 37 Goes by                | 34 Frozen treat            |
| 38 Unrevealed fact        |                            |
| 39 Makes lace             |                            |





# MALENY & HINTERLAND REAL ESTATE

SALES | PROPERTY MANAGEMENT | COMMERCIAL



580 Mountain View Road **MALENY**

3 2 1

First time offered to the market, this immaculate colonial style property is positioned on a generous 3000m<sup>2</sup> parcel of lush rainforest surrounds and offers an enviable lifestyle in a premium Hinterland location.

- Neutral colour palette, high ceilings and bay windows
- Natural timber flooring
- Modern kitchen with stone benchtops, quality appliances, gas cooking and ample storage
- Ducted A/C and fireplace
- Wraparound covered verandahs

This home is designed to make the most of its relaxing setting. Located only minutes to Maleny township, in a sought after and rarely available address; be quick and inspect today!

**FOR SALE**  
Price Guide \$1.25M  
**INSPECT**  
By Appointment

**Jess Luthje**  
0438 616 064  
jess@malenyrealestate.com



18 Cedar Grove Court **MALENY**

VACANT LAND

Walk to town in just minutes from the home you can build on this 998m<sup>2</sup> block. Land available in the heart of Maleny is rare, but the chance to create your dream home can be found here. Backing onto the wetland and brook that runs through the Cedar Grove and Hakea Street areas, you'll have the chance to create a home taking in the best of Hinterland nature.

- 998m<sup>2</sup>
- Minutes to town, cafés, shopping, schools and amenities
- Town water and sewerage
- Quiet location

Inspect this very private block today and start building in the New Year!

**FOR SALE**  
\$520,000  
**INSPECT**  
By Appointment

**Rodney Millett**  
0477 702 073  
rodney@malenyrealestate.com



815 Landsborough Maleny Road **BALD KNOB**

3 1 4

Set atop the mountainous Sunshine Coast Hinterland, on just under half an acre, is this charming low set contemporary home. Buyers could reap the benefits here with this property's separate studio.

- North facing, low set contemporary home
- Separate studio with power
- 9ft ceilings and hardwood floors
- Wood burning fireplace
- Landscaped, flat block with mature trees

Such a pretty property with the valuable addition of the separate studio must be on the top of your inspection's list.

**FOR SALE**  
Offers Over \$990,000  
**INSPECT**  
By Appointment and  
Open Homes

**Sam Bruderlin**  
0497 774 979  
sam@malenyrealestate.com



107 Tallowood Street **MALENY**

4 2 2

Impressing immediately with an impeccable street frontage and standing proud on a 3000m<sup>2</sup> low maintenance parcel, this near new double storey residence provides readymade comfort and functionality over two spacious levels.

- Immaculate interior; stylish and sophisticated
- Gourmet kitchen including a butler's pantry
- King-size main bedroom with oversized en suite and balcony
- Multiple outdoor entertaining areas
- Separate games/media room with wet bar

With the native reserve at your back doorstep providing you with a peaceful and private backdrop; this is a home you simply can't go past.

**FOR SALE**  
Price Guide \$1,449,000  
**INSPECT**  
By Appointment

**Jess Luthje**  
0438 616 064  
jess@malenyrealestate.com



22 Sternberg Drive **WITTA**

3 1 3

Nestled in Witta, just over ten minutes from the heart of Maleny is this cottage just waiting for its new owners to bring their design plans. Create the perfect weekender here and escape the hustle and bustle of city life; whisper quiet, this property has one of the prettiest, rural outlooks. This solid, well-maintained home offers the perfect start to your life in the Hinterland.

Witta is an easy drive from Maleny taking in the best of the Hinterland- views, dairy and beef cattle, green pastures and produce stalls. This much-loved home offers a wonderful opportunity for buyers seeking their own piece of the Hinterland to enjoy this perfect lifestyle.

- High vaulted ceilings with timber feature beams
- Beautifully crafted home with slate and cork flooring
- Fireplace and air conditioning in living area
- Connection to outside through large sliding doors
- Paved entertaining space to gather with family

**FOR SALE**  
\$985,000  
**INSPECT**  
By Appointment  
**Rodney Millett**  
0477 702 073  
rodney@malenyrealestate.com

5494 3022

malenyrealestate.com

Maleny & Hinterland Real Estate

malenyandhinterlandrealestate

PROUDLY A FAMILY OWNED AND OPERATED AGENCY IN THE HEART OF MALENY





Country living at its best with easy town convenience and loads of potential if you want to add your own personal touches.

## Country living in a blue ribbon location

**AGENT'S CHOICE:** 1 Currawong Drive, Maleny. \$1,200,000

IF you are looking for a spacious family home with dual living potential, a peaceful country escape or weekender, this is the one! Genuine country feel and family lifestyle are perfectly united in this delightful lowset home; nestled in a quiet cul-de-sac on almost 1 acre (3807m<sup>2</sup>) and only 5 mins from Maleny township. This usable and manageable parcel offers impressive, low maintenance gardens, filled with bird attracting natives, fruit trees, space for veggies, a huge shed and picturesque views of neighbouring farmland.

The home embraces its amazing surrounds via the verandah at the front with easy access to the open kitchen, dining and living space and very spacious outdoor living area to the rear. The large kitchen features ample bench space, storage and a walk-in pantry. Reverse cycle air conditioning in the living area and main bedroom will keep you comfortable all year round.

Four bedrooms, a study and an extra bedroom with en suite semi-detached from the house occupy the rest of the home; just perfectly suited for dual living or the growing



family. The home also offers a main with en suite, including a bathtub, family bathroom and a separate laundry.

Outside, infrastructure of double carport, separate 7m x 15m workshop with separate driveway access and a caravan height section complete the package.

► This is country living at its best with easy town convenience and loads of potential if you want to add your own personal touches. Book your private viewing with agent Jess Luthje today on 0438 616 064.



There is enough room to have a horse or two, a chook pen and fertile soil for a veggie patch or add more trees to the already existing 10-tree orchard.

## Amazing views on one acre of land

**AGENT'S CHOICE:** 10 Mundoo Street, Coes Creek. Offers over \$799,000.

BRING your paintbrush and your buddies and realise the potential of this elevated Coes Creek acreage with a Hinterland outlook.

The current owners are ready to move on and the property will benefit from having a small family who can love it and make it their own castle. There is enough room to have a horse or two, a chook pen and fertile soil for a veggie patch or add more trees to the already existing 10-tree orchard. The keen investor will recognise the future value of its position. Find out for yourself by private viewing only. Contact



Remax Nambour's Nicky Coetsee on 0401 358 484 or Jai Barber on 0492 855 196 to arrange your inspection today.



The tenancy is a mixture of personal and professional services, retail and food businesses.

## Prime block, corner Currie & Howard streets, for sale

A freehold property on a corner block in the heart of Nambour CBD is up for sale offering exposure to both Currie & Howard Streets.

Emily Pendleton from Ray White Commercial Northern Corridor Group said 103-105 Currie Street and 13-15 Howard Street, Nambour was for sale by private treaty for offers over \$4 million.

The property includes two buildings with 15 tenants with a total net lettable area of 1508m<sup>2</sup>. The lettable space is split over two levels including ground-floor retail and a basement which currently houses Nambour Book Exchange.

The tenancy is a mixture of personal and pro-

fessional services, retail and food businesses.

"The property offers huge upside potential being on a corner block with the ability to build up to 25 meters in the town centre zoning," said Emily.

"This is a really exciting opportunity to secure such a prominent corner freehold in Nambour. I have looked after the leasing on this property for over 10 years and we always lease up any vacancies quickly as the shops are small and there are always tenants looking for these sizes. There is ample development upside and it is currently returning \$236,083 per annum net."

► Phone Emily on 0402 435 446.



*Making you happy, makes us happy!*

*Richard and Megan were with me each step of the way*

*"Richard and Megan were extremely helpful throughout the entire process of buying my first home. I asked many questions and each question was provided with a detailed answer. Service was above and beyond. Richard and Megan were with me each step of the way and were more than happy to provide answers and guide me throughout the entire process which was all new to me. I have absolutely no hesitation in recommending Richard and Megan to any of my friends or family. Superb!"*

*Buyer Review*

*Richard and his team were attentive from the word go!*

*"Richard and his team were attentive from the word go! They spent time explaining the process to my husband and I who were very much new to how selling a property works. Admin and communication from the office was efficient and friendly. Richard's knowledge and experience of the market helped us achieve a marketing strategy, open home, offer and sale in a short amount of time."*

*Seller Review*

Richard Krausz 0422 997 810 [f](https://www.facebook.com/richardkrauszremax) [i](https://www.instagram.com/richardkrauszremax) @richardkrauszremax





# RE/MAX<sup>®</sup>

## BUY • RENT • SELL

### WITH NAMBOUR'S #1 AGENCY!

#1 ACCORDING TO [www.realestate.com.au](http://www.realestate.com.au) and [www.ratemyagent.com.au](http://www.ratemyagent.com.au)

Each office independently owned and operated.



OFFERS OVER \$799,000

**10 Mundoo Street COES CREEK**  
3 Bed 1 Bath 4 Car 4036m<sup>2</sup>  
Nicky Coetsee 0401 358 484  
Jai Barber 0492 855 196



OFFERS OVER \$1,495,000

**42 Black Mtn Range Rd BLACK MTN**  
3 Bed 2 Bath 8 Car 3.6 Hectares  
Nathan Beasley 0427 612 550  
Jack Payton 0428 748 510



OFFERS OVER \$1,200,000

**105 Flaxton Drive MAPLETON**  
4 Bed 2 Bath 4 Car 1 Acre  
Scott Walters 0447 474 982  
Nicky Coetsee 0401 358 484



OFFERS AROUND \$980k NEGOTIABLE

**18 Retreat Crescent YANDINA**  
4 Bed 2 Bath 2 Car 700m<sup>2</sup>  
Frederic Tober 0402 001 179



\$370,000

**19/18 Doolan Street NAMBOUR**  
2 Bed 1 Bath 1 Car  
Megan Manly 0421 040 807



CONTACT AGENT

**21 Albatross Avenue NAMBOUR**  
6 Bed 3 Bath 2 Car 882m<sup>2</sup>  
Tristan Brown 0403 665 643  
Nicky Coetsee 0401 358 484



STARTING FROM \$439,000

**'The Retreat' COES CREEK**  
Flat Land in Coes Creek!  
Tristan Brown 0403 665 643  
Megan Manly 0421 040 807



AUCTION

**6 Sales Court WOOMBIE**  
3 Bed 2 Bath 2 Car 822m<sup>2</sup>  
Richard Krausz 0422 997 810  
Megan Manly 0421 040 807



\$1200pw Incl. Lawn Maintenance

**1-7 Heath Lane KUREELPA**  
4 Bed 2 Bath 1 Car  
Jody Chatillon 07 5470 7000



\$800 Per Week

**20-22 Angus Crescent KUREELPA**  
3 Bed 1 Bath 3 Car  
Jody Chatillon 07 5470 7000



\$590 Per Week

**18 Nambour-Mapleton Rd NAMBOUR**  
3 Bed 1 Bath 2 Car  
Jody Chatillon 07 5470 7000



\$750 Per Week

**15 Avocado Crescent BLI BLI**  
4 Bed 2 Bath 2 Car  
Jody Chatillon 07 5470 7000

 **RE/MAX** Property Sales & Rentals

[www.remaxpropertysales.com.au](http://www.remaxpropertysales.com.au)

50 Lowe Street, Nambour | 07 5470 7000 | [outstandingagents@remax.com.au](mailto:outstandingagents@remax.com.au)



## Immaculately presented with views

**AGENT'S CHOICE:** 42 Black Mountain Range Road. Offers over \$1,495,000.

THIS picturesque property is nestled on almost nine acres with beautiful trees lining a shaded walk to the large dam located at the bottom of the block.

If you enter from the side road access, you get an uninterrupted walk through the many walking trails entwined in the trees – giving it a private, forest feel.

Located off the main road, the property is only six minutes to Cooroy, 10 minutes to the historic town of Pomona and is under 30 minutes to Noosa's main beach.

Step outside the door and enjoy hinterland living at its finest.

As you walk through the front door, you are greeted by high raked ceilings with exposed beams, giving the feeling of vast space. Making your way into the lounge area, you will immediately be met with breathtaking views of Black Mountain's rolling hills all the way to the coastline of Noosa's north shore.

Standing in the kitchen you will appreciate the vast amount of storage, large walk-in pantry, Belling 4 oven cooker and stone bench tops which comfortably seat six.

Sit back and appreciate the north or easterly facing verandas and take in the peace and serenity that living in the hinterland offers, or if you prefer, move around to the outdoor BBQ entertaining area and enjoy the undercover spa.

This area is an entertainers delight and ideal to enjoy with family and friends.

Heading upstairs to the master suite you will



**The possibilities are endless with this home. Even the savvy investor can take advantage of the space to build up to 8 short stay Airbnb style cabins.**

find a generous walk-in wardrobe, ensuite and roof space which is ideal for storage.

On this level you will also find the home office which overlooks the lounge area – both rooms enjoy morning views of the ocean.

The possibilities are endless with this home.

Even the savvy investor can take advantage of the space to build up to 8 short stay Airbnb style cabins.



► To arrange your inspection, contact Remax Nambour's Nathan Beasley by phoning 0427 612 550 or fellow sales agent Jack Payton on 0428 748 510.

## What's your home worth now?

HINTERLAND regions are continuing to attract big demand from capital city property buyers. For the average Nambour homeowner, the median price rose \$140,000 in the past 12 months to October. Meanwhile Ninderry, Kureelipa, Montville, Reesville, Maleny and Witta entered million-dollar-plus median home price territory. Sunshine Beach had the highest median value on the Sunshine Coast.

Suburb	Home or Unit	Median value October 2022	Median value October 2021	Median value October 2017
Sunshine Beach	H	\$3,250,000	\$2,999,950	\$1,155,000
Eumundi	H	\$1,470,000	\$900,000	\$641,500
Hunchy	H	\$1,400,000	\$849,000	
Kureelipa	H	\$1,390,000	\$742,000	\$592,500
Mons	H	\$1,345,000	\$1,275,000	\$812,500
Tanawha	H	\$1,343,000	\$1,367,500	\$1,190,000
Ninderry	H	\$1,200,000	\$982,000	\$614,000
North Maleny	H	\$1,200,000	\$1,080,000	\$855,000
Montville	H	\$1,195,000	\$860,000	\$508,000
Reesville	H	\$1,187,500	\$905,000	\$705,000
Verrierdale	H	\$1,180,000	\$1,045,000	\$684,500
West Woombye	H	\$1,175,000	\$1,070,000	\$647,000
Witta	H	\$1,144,000	\$848,000	\$569,000
Maleny	H	\$1,020,000	\$805,000	\$570,000
Peachester	H	\$970,000	\$758,750	\$600,000
Flaxton	H	\$942,500	\$857,500	\$717,500
Rosemount	H	\$937,500	\$915,000	\$685,000
Mooloolah Valley	H	\$935,000	\$726,000	\$520,000
Bli Bli	H	\$981,000	\$690,000	\$520,000
Forest Glen	H	\$880,000	\$722,500	\$597,000
Palmwoods	H	\$880,000	\$700,000	\$523,750
Eudlo	H	\$874,000		
Mapleton	H	\$860,000	\$740,000	\$560,000
Yandina	H	\$850,000	\$662,500	\$450,000
Woombye	H	\$840,000	\$710,000	\$451,250
Coes Creek	H	\$805,000	\$567,500	\$403,000
Conondale	H	\$747,500	\$848,000	\$480,000
Burnside	H	\$733,000	\$575,250	\$417,500
Bli Bli	U	\$682,500	\$527,500	\$430,000
Nambour	H	\$680,000	\$540,000	\$375,500



## 6 SALES COURT, WOOMBYE

For Sale by Auction - November 19th, 12pm on site

This beautiful family home hits the market for the first time in 30+ years! Elevated home with stunning views over Nambour & the Blackall Range.

Open Homes - Every Saturday until Auction 12 - 12:45pm

**0422 997 810**

RICHARD KRAUSZ

**0421 040 807**

MEGAN MANLY



Look Local

# Trades & Professional Services

## Cleaning/Pest Control

### Sutton's CLEANING SERVICE

- SEPTIC SYSTEM *Locally Owned*
- TREATMENT PLANTS *& Operated Since 1980*
- GREASE TRAPS
- HYDRO EXCAVATION
- LIQUID WASTE
- COMMERCIAL & DOMESTIC

**PH 5447 6477**  
www.suttonscleaning.com.au

### RANGE CARPET CARE

**Citrus or Hypoallergenic Detergents Available**

**Nambour > Hinterland Coast**

- Same owner operator - SINCE 1987
- Environmentally safe & clean solution
- Commercial & residential
- Help reduce levels of dust mites

**WARNING** Dirty carpets are a health hazard  
**BROLLY** Fabric Protection  
**Ph 5445 7611**

## Professional Services

### Hinterland ACCOUNTANTS + ADVISORS

Supporting local business with  
Accounting and Tax  
BAS and GST  
Financial Statements  
SMSF and Superannuation  
Planning and Business Structuring  
Business Purchase and Sale

1/13 Turner St, Beerwah  
5439 0188 | admin@hintertax.com.au

### innov8 ACCOUNTING & ADVISORY

Accounting  
Business Advisory Services  
Tax Return Preparation  
Company, Trust, Partnership, Individual  
Self-managed Super Funds

5442 1234  
info@innovateaa.com.au  
www.innovateaa.com.au

## Electrician

### ACW Electrical Pty Ltd

*Small Job Specialist*

Quality Workmanship on Domestic Installations & Repairs  
40 Years Experience

**M: 04 27 170235**

## Water Services

### SEPTIC PUMP OUTS

Hinterland Waste Water Services

**Peter**  
**0428 723 082**  
hwws@bigpond.com

## Auto Services

### AUTOELECTRICS QLD & Mechanical

- Air Conditioning
- Mechanical Repairs
- Auto Electrics
- Log Book Servicing

227 Nambour Connection Rd, Woombye  
**autoelectricssqld.com.au**  
**5442 2278**

# HPS

**Hinterland Pump Services**  
Glasshouse to Gympie  
Murray  
**0416 256 536**

## Home

Servicing The Sunshine Coast For Over 30 Years

### INDEPENDENT BLINDS & AWNINGS

**0411 872 060**

Ziptrak & Zipscreen • Blinds & Awnings  
Clear PVC Blinds • Plantation Shutters  
Security Doors & Screens

Call us today for a free measure and quote!

www.independentblindsandawnings.com.au  
QBCC No. 1096933

## Landscaping Services

### WOODCHIP / FOREST MULCH

\$25 per cubic metre + GST  
(8 cubic metres minimum delivery)

**54 459921 or 0412 586 131**

We also provide complete tree services including pruning, removals & consultancy



## Rubbish Removal

**2-GO Clear-Space !!**

### RUBBISH (ANYTHING) REMOVAL

Fridges, Beds, Mattresses, Lounges, including clutter

**FREE QUOTES**

Small Clutter or Full House Clearances

The Clear-Choice !!

**CALL NOW 0477 772 138**

### SUNCOAST PROPERTY MAINTENANCE

COMMERCIAL & RESIDENTIAL

- PRESSURE CLEANING**
- ▶ Restoration of Decks
  - ▶ External House Wash
  - ▶ Roof Cleaned & Painted / Sealed
  - ▶ Driveway Cleaned & Sealed
  - ▶ Pool & Outdoor Areas
  - ▶ Shade Sails
  - ▶ Solar Panels
  - ▶ All Concrete Areas



ABN: 84 703 106 220  
**0403 213 778** Suncoast Property Maintenance  
www.suncoastpropertymaintenance.net.au

## Auto Services

# CARAVANS WE BUY, SELL AND CONSIGN

**P: 0408 758 688**

## Plumber

### WOOMBYE PLUMBING

30 Years Experience  
RURAL PLUMBING SPECIALIST

- RAINWATER TANKS & INSTALLATION
- DRAINAGE
- MAINTENANCE
- EXCAVATOR HIRE

**ADAM KITHER**  
0418 712 268  
adam@kitherplumbing.com

24 Menary Rd, Woombye QLD 4559

### CONCRETE WORX

We Do It All!

35+ Years Experience  
Decorative Stamp and Stencil  
Coloured and Exposed  
Shed Slabs and Driveways  
Bobcat and Tipper Hire  
QBCC: 66649

**MICK : 0417 745 770**

### CONCRETING & LANDSCAPING ALL AREAS

- Footpaths • Driveways • Slabs • Stencil • Stamped
- Exposed Aggregate • Plain • Bobcat • Excavator & Truck
- Quality work at affordable rates
- Free Quotes & Free Advice Anytime • Credit Cards

**Ph Guy 0416 202 044**  
www.concretecontrol.com.au  
QBCC Lic no. 1129605

### LOCALLY GROWN TURF

FAMILY OWNED AND OPERATED



- Low Maintenance
- Hard Wearing
- Shade Hardy
- Wintergreen Couch
- Native Zoysia Nara
- Drought & Salt Resistant
- Suits all Budgets
- Soft Leaf
- Buffalo Sapphire

• Pickup or Delivered • Preparation & Installation  
**P 07 5445 9251 M 0488 409 502**  
447 Chevallum Rd, Chevallum | twistbrothersturf.com.au | ☎

- TREES & STUMPS REMOVED
- HOUSE & SHED SITES
- UNDERGROWTH & LANTANA CLEARED
- FARM ROADS
- HORSE ARENAS
- AND MUCH MORE!
- STEEP SLOPES OK



**JOHN : 0455 916 231**

## Painting

### Shane Nolan Painting & Decorating

Keeping the Hinterland Beautiful

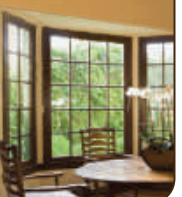
All Aspects of Painting

Interior Exterior - New & Old

- Repaints • Restoration
- Decorative Features
- Wall Papering

**0403 245 109**

FREE QUOTES  
shanenolan66@gmail.com  
BSA 1016510



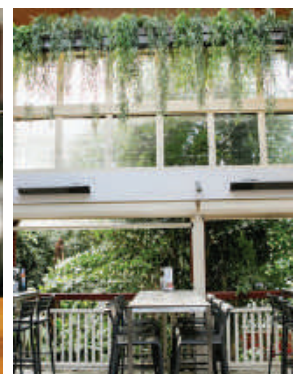
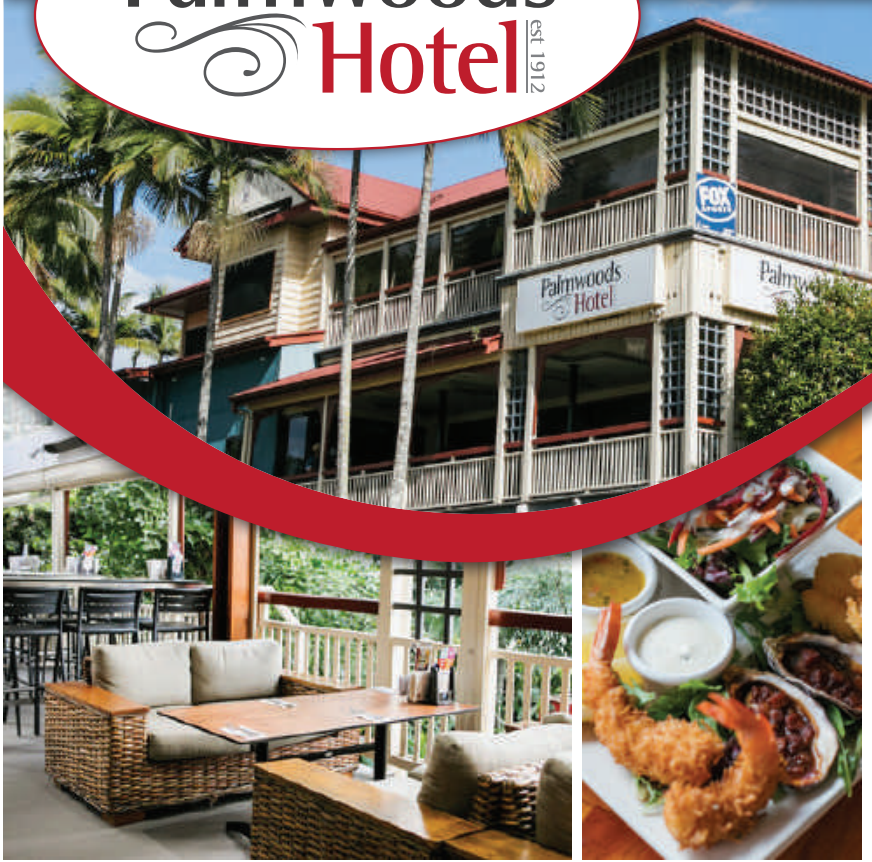
### Solution No. 10050

S	C	D	A	I	S	D	A				
P	R	O	P	E	R	L	E	G	E	N	D
O	V	C	E	D	A	R	M	O			
O	B	E	R	O	N	T	A	R	E	R	
L	I	T	E	R	A	T	E	R	I	N	
S	P	A	S	S	A	T	I	N			
S	T	O	A	T		T	I	T	L	E	
R	I	S	E	R		N	O	R		E	
C	O	L	T		E	L	E	M	E	N	T
R	I	S	I	S		W	I	D	E	S	T
E	E	C	I	T	E	S	A	A			
P	A	S	S	E	S		S	E	C	R	E
E	T		T	A	T	S		S	E		



**Palmwoods Hotel** EST. 1912

# EXPERIENCE THE LEGEND



FREE ENTRY | 8.30PM | 18+

**KISSPERIENCE**  
THE ULTIMATE KISS EXPERIENCE

**SATURDAY 17th NOVEMBER**

**DEC 31ST**

## TO THE SKIES

**NEW YEARS EVE PARTY**  
8:30 - 12:30

SAT 17TH DECEMBER

**Cash for CHRISTMAS**

WIN A SHARE OF \$15,000  
**\$10,000 MAJOR PRIZE**  
PLUS 15 MYSTERY CASH PRIZES WORTH \$5K

DRAWN AT 2PM

MUST BE HERE TO WIN

**NEW MENU OUT ON FRIDAY 25th NOVEMBER**

**LIVE MUSIC EVERY SUNDAY FROM 2PM**

28-34 MAIN STREET PALMWOODS | BOOKINGS ESSENTIAL | 1300 PALMWOODS | WWW.PALMWOODSHOTEL.COM.AU |

**Shop YOUR WAY**  
AND WIN YOUR SHARE OF **\$25K**

**THE NEW APP IS HERE!**

**DOWNLOAD THE NEW APP**

**WIN YOUR SHARE OF \$25,000**

**THE NEW APP IS HERE!**

Download on the **App Store**

GET IT ON **Google Play**

**SPEND \$60 OR MORE ONLINE OR INSTORE TO ENTER**  
TERMS AND CONDITIONS APPLY. SEE WEBSITE FOR DETAILS

**EVERYTHING YOU NEED TO SHOP YOUR WAY**

PICK UP IN 30 MINS | DELIVERY IN HOUR | INSTORE FIND YOUR NEAREST STORE

**START AT**  
**Bottlemart**

[BOTTLEMART.COM.AU](http://BOTTLEMART.COM.AU)

**PIRATE LIFE SOUTH COAST PALE ALE**  
16 X 355ML CANS

**\$44.99 EACH**

**XXXX GOLD**  
24 X 375ML BOTTLES OR CANS

**\$44.99 EACH**

**STONE & WOOD GREEN COAST LAGER 3.5%**  
24 X 330ML BOTTLES

**\$49.99 EACH**

**GREAT NORTHERN ORIGINAL**  
24 X 330ML BOTTLES OR 375ML CANS

**\$54.99 EACH**

**WIN \$200 TICKETEK VOUCHERS**

PURCHASE A SPECIALLY MARKED JIM BEAM WHITE & COLA 4.8% 10 PACK AND ENTER FOR YOUR CHANCE TO WIN. TERMS AND CONDITIONS APPLY. SEE WEBSITE FOR DETAILS

**\$39.99 EACH**

**JIM BEAM WHITE & COLA 4.8% VARIETIES**  
10 X 375ML CANS

**\$41.99 EACH**

**JIM BEAM WHITE LABEL BOURBON, SAILOR JERRY SPICED RUM OR CANADIAN CLUB WHISKY 700ML**

**1 LITRE \$56.99 EACH**

EQUATES TO \$39.89 PER 700ML

**GRANT'S SCOTCH WHISKY, SMIRNOFF RED VODKA, BUNDABERG UP RUM, CAPTAIN MORGAN SPICED GOLD OR GORDON'S GIN 1 LITRE**

**SAVE \$4**

**\$12.99 EACH**

**ELEPHANT IN THE ROOM (EXCL. SINGLE VINEYARD), JACOB'S CREEK LE PETIT ROSÉ, SECRET STONE WINES (EXCL. PINOT NOIR) OR BROWN BROTHERS ZIBIBBO WINES 750ML**

**\$14.99 EACH**

**JACOB'S CREEK MARKET HALL, MUD HOUSE ROSÉ & WHITE WINES, ST HALLETT BLACK CLAY SHIRAZ OR MARQUIS DE PENNAUTIER ROSÉ 750ML**

**\$19.99 EACH**

**ROBERT OATLEY SIGNATURE SERIES WINES 750ML**

**BONUS PICNIC GLASSES**  
PURCHASE ANY 2 BOTTLES OF ROBERT OATLEY SIGNATURE SERIES WINES & RECEIVE 2 PICNIC GLASSES. WHILE STOCKS LAST.

**BEERWAH CELLARS - BEERWAH**  
SHOP 11, BEERWAH MARKETPLACE PEACHESTER RD TEL 5494 0477

**BEERWAH DRIVE THRU - BEERWAH**  
MAWHINNEY STREET TEL 5494 0555

**GLASS HOUSE CELLARS - GLASS HOUSE MOUNTAIN**  
SHOP 5, 9 BRUCE PARADE TEL 5493 0188

**MOOLOOLAH CELLARS - MOOLOOLAH**  
SHOP 3, 2 JONES STREET TEL 5494 7320

**PALMWOODS CELLARS - PALMWOODS**  
SHOP 5, 18-20 MARGARET STREET TEL 5445 9266

**PALMWOODS DRIVE THRU - PALMWOODS**  
28 MAIN STREET TEL 5445 9003



All specials available from Wednesday 16th November until Tuesday 29th November 2022. Images are for illustrative purposes only. Specials available only in the state of Queensland. Prices may vary in country and far North Queensland. Different pack sizes and variants may not be available in all stores. Bottlemart supports the responsible service of alcohol.



FOR SALE	NAMBOUR	FOR SALE	NAMBOUR	FOR SALE	BURNSIDE	FOR SALE	SOUTHSIDE	FOR SALE	NAMBOUR
2/51 ARUNDELL AVE	124 NAMBOUR MAPLETON ROAD	10 REGENTS PLACE	32 FURNESS ROAD	69 PARK ROAD					
2  1  1	3  1  2	4  2  2  638m <sup>2</sup>	4  2  2  803m <sup>2</sup>	5  2  10  1.3ha					
Andy Sharma: 0410 989 177	Andy Sharma: 0410 989 177	Andy Sharma: 0410 989 177	Warren Nonmus: 0431 210 348	Andy Sharma: 0410 989 177					

# STOP!

Don't sign **ANYTHING** until you have spoken to our team of industry leading Agents and Property Managers!

# RE/MAX<sup>®</sup>

Property Sales & Rentals

**07 5470 7000**



**Cub Cadet**

## CUB CADET MODELS IN STOCK

NEW ZIP PAY 60 MONTHS INTEREST FREE NO DEPOSIT ON ALL CUB CADET RIDE ON MOWERS

**CUB CADET XT1** **NEW**

XT1 42 RRP-\$4,999 **\$4,499**  
LX42 XT1 KAWASAKI 24 HP V TWIN RRP-\$6,999 **\$6,699**  
LX42 XT2 FUEL INJECTION ENGINE AUTO DIFF LOCK FREE POLY TRAILER **\$6,999**

**CUB CADET ZTS1** **NEW**

42" FABRICATED DECK RRP-\$8,799 **\$8,399**  
46" FABRICATED DECK RRP-\$9,499 **\$8,999**

3 YR WARRANTY  
SYNCHRO STEER

**CUB CADET ZTX5**

48" FABRICATED DECK RRP-\$13,999 **\$13,499**  
54" FABRICATED DECK RRP-\$14,899 **\$13,499**  
60" FABRICATED DECK RRP-\$15,899 **\$14,999**

3 YR WARRANTY  
2 YR COMMERCIAL WARRANTY

**CUB CADET PRO Z**

PRO Z 148S RRP-\$16,399 **\$15,299**  
PRO Z 154S RRP-\$16,899 **\$15,799**  
972SD DUAL WHEELER RRP-\$33,999 **\$30,999**  
972 SDL DUEL WHEELER BEACON BUT NO LIGHTS SELF LEVELLING SEAT RRP-\$35,999 **\$32,999**

SYNCHRO STEER  
FAB DECK